

ROCKVILLE

WET-D4

DUAL 4" 70V INDOOR/OUTDOOR
COMMERCIAL SPEAKER

OWNER'S MANUAL

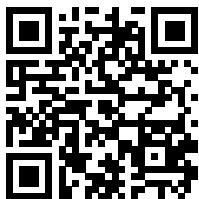
ATTENTION:
WATCH THIS VIDEO BEFORE FIRST USE!

Who reads manuals?

Scan the **QR codes** or go to the **URLs** to access how-to video(s), assembly video(s), the owner's manual, and other important information you may need to get the most out of your item.

If you prefer written instructions, please read ahead!

With Rockville you get many options.



rockvillesupport.com/wet-d4-white



rockvillesupport.com/wet-d4-black

Missing items? If you ordered a bundle that includes more than one product and you are missing part of your bundle then it just means your order shipped from two different warehouses. You will receive the remaining items very soon. If you have any concerns or inquiries, feel free to call our customer support center at 1-646-758-0144, 24 hours a day/7 days a week.

Thank you for purchasing this Rockville product. Please read this owner's manual carefully for proper use of your Rockville WET-D4 commercial speaker. Should you need assistance, please call our technical help line at 1-646-758-0144, 24 hours a day/7 days a week.

Includes

- (1) Speaker
- (1) Banana plug cable harness
- (1) Wall mounting bracket
- Mounting hardware
- Owner's manual
- Warranty card

IMPORTANT SAFETY INSTRUCTIONS



TO REDUCE THE RISK OF ELECTRICAL SHOCK, NEVER OPEN THE UNIT. THERE ARE NO SERVICEABLE PARTS INSIDE. WE RECOMMEND TAKING THE UNIT TO A QUALIFIED SERVICE TECHNICIAN FOR ANY REPAIRS.

- Always mount this unit in a safe and stable manner. Ensure that the mounting surface is structurally sound and can support the weight of the speaker.
- When mounting the speaker, do not use nails, adhesives, or other inappropriate devices. Long-term use and vibrations may cause it to fall easily.

What is 70 Volt?

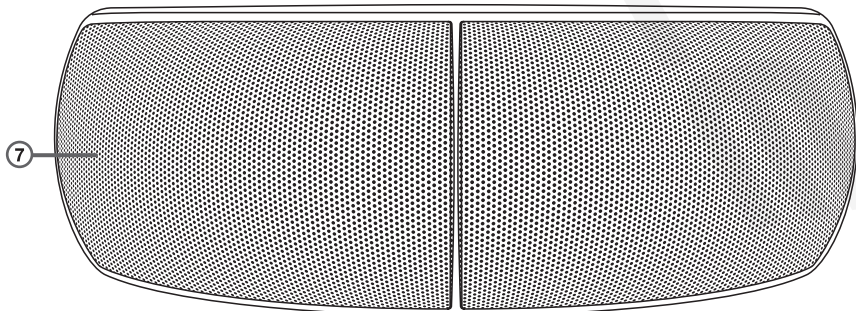
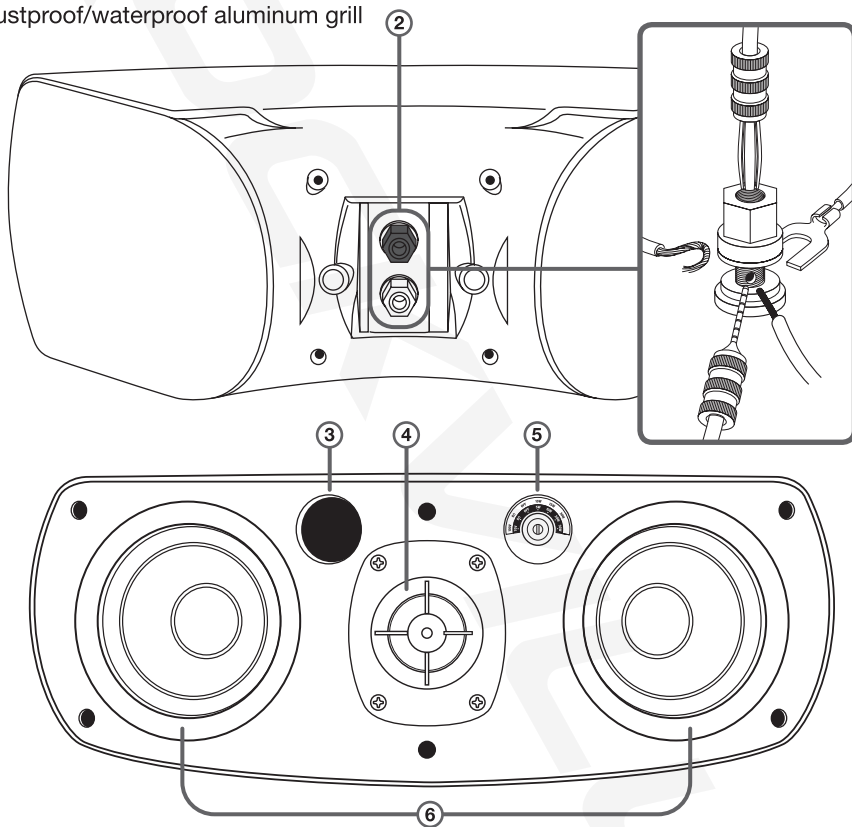
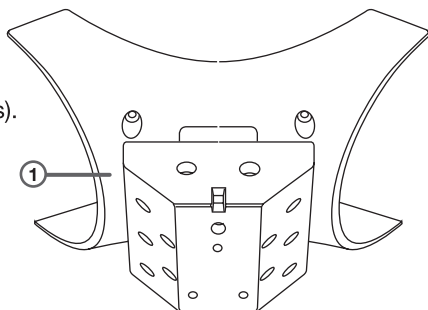
70-volt systems are the number one choice for any application where you want to install multiple speakers. With 70 volt there are a lot of advantages over 8-ohm systems. One of the main advantages is the simplicity of the wiring as well as how easy it is to match up the speakers with an amplifier. You always want your 70-volt amp to have at least 15 or 20% more power than the combined watts your speakers are tapped at. For example, if you have a 180-watt/70-volt amplifier, you can install ten 70-volt speakers that are tapped at 15 watts each or twenty-five 70-volt speakers that are tapped at 5 watts each as long as they total close to 150 watts. When we say the word tap, what we are referring to is the selector knob on the front (under the removable grill) of the WET-D4 speakers. It allows you to set how many watts the built-in transformer will allow the speaker to get from the amplifier. These speakers have 70V taps set at 5, 10, 15, 30 watts, and 100V taps set at 10, 20, 30W. This range of taps allows for full customization of the sound for the space in which the speakers are installed. In a restaurant, for example, you can tap your dining room speakers at 15 watts, the speakers in the outside seating area at 30 watts, the ones in the hallway at 10 watts, and the speakers in the bathrooms at 5 watts. Another great feature of 70-volt speakers is that you can mix and match any type whether they are wall mounted speakers (such as these), ceiling speakers, subwoofers, etc.

Another benefit of 70-volt speaker set-ups is the ability to run very long lines of speaker wire without signal loss. And, the wiring is very simple. You just connect all the positive terminals of the speakers to the positive 70-volt terminal(s) of the amplifier. The negative terminals on the speaker get connected to the negative (COM) terminal(s) of the amp. You do not have to worry about impedance as the power is constant.

Please be sure to check out Rockville's complete selection of high-quality, 70-volt speakers, amplifiers, and accessories.

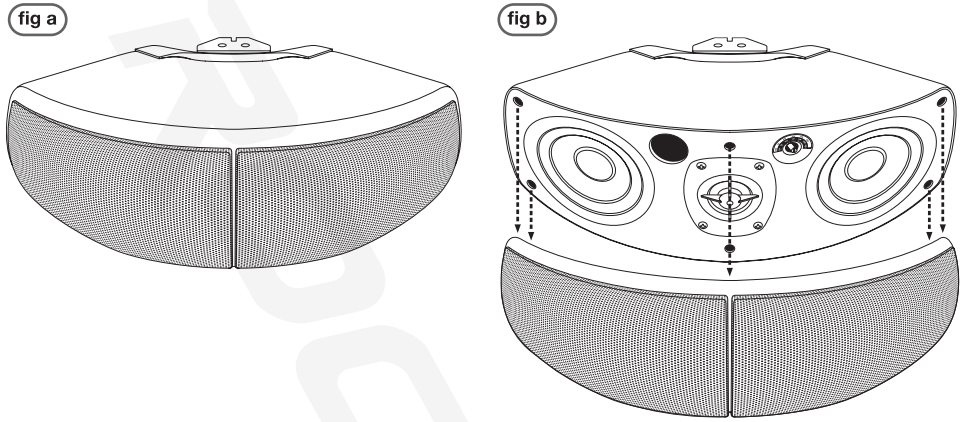
Parts

1. 2-way mounting bracket
2. 5-way binding post terminals (we strongly recommend using the included banana plugs).
3. Front facing port
4. 1" Silk dome tweeter
5. 70V/100V/8-Ohm tap switch
6. 4" Woofers with polypropylene cones
7. Rustproof/waterproof aluminum grill



Removing/Attaching the Grill

To remove the grill, carefully grip the sides of the grill and gently pull it away from the speaker (fig a). To attach the grill, simply align the edges with the inner groove on the front of the speaker and press gently until the grill is securely seated in place (fig b).

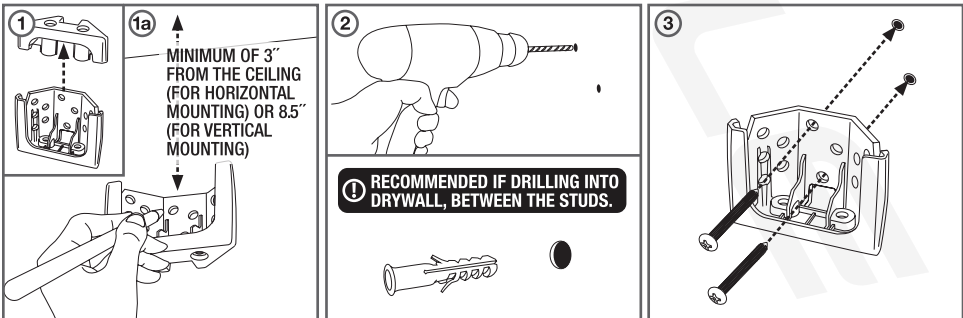


Installation and Mounting

These speakers can be mounted on a wall surface, either horizontally or vertically. It can also be mounted horizontally on a wall corner. When mounting on a wall surface, make sure to place the mounting bracket no more than 3" (horizontally) or 8.5" (vertically) away from the ceiling. Otherwise, there will not be enough clearance to slide the speaker onto the bracket.

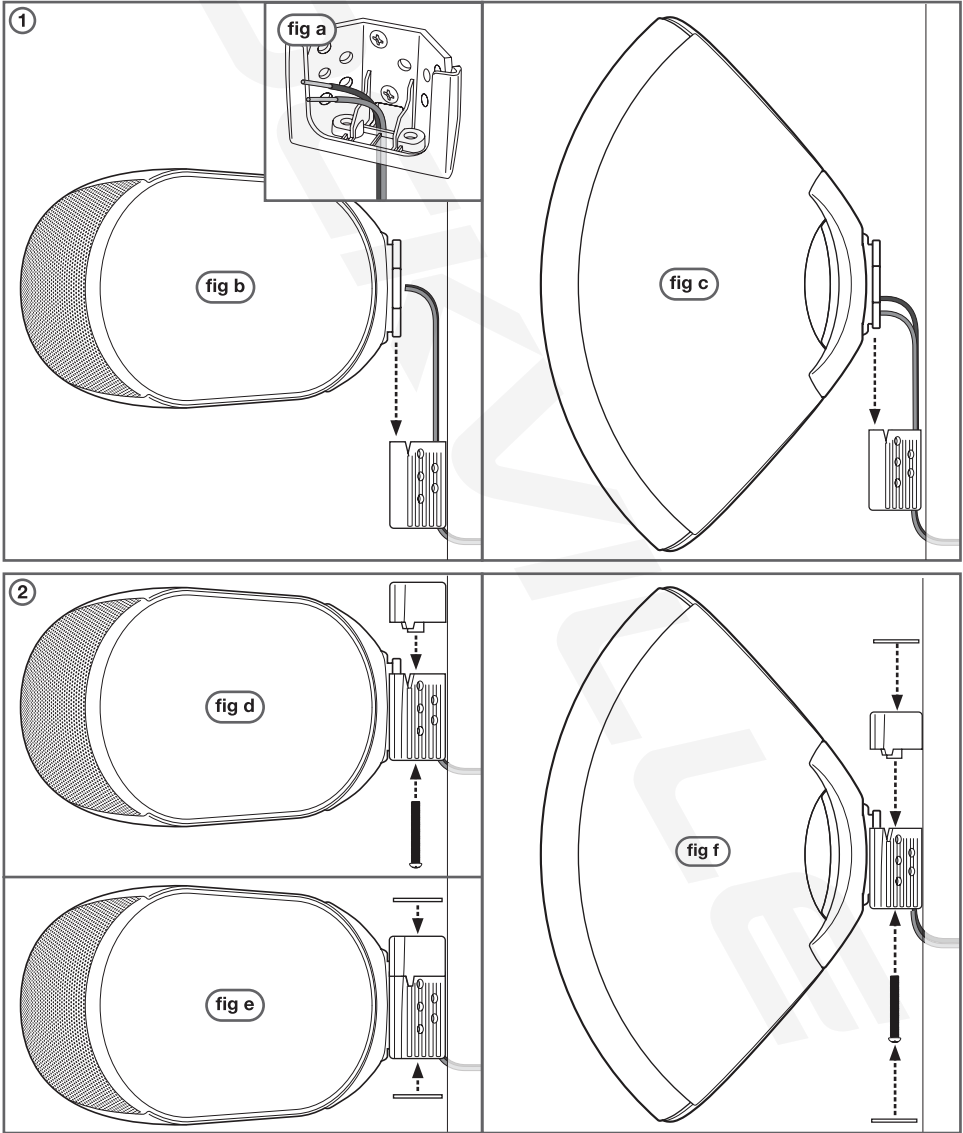
Horizontal and Vertical Wall Surface Bracket Installation

1. Remove the bracket cap from the mounting bracket. Use a stud finder to locate the wall studs and mark their location. Using the bracket as a template, mark the mounting screw locations on the part of the bracket that is against the wall surface as shown in illustration 1a.
2. Drill pilot holes for the screws. If you are installing between studs we recommend using anchors. Be sure to use the appropriate type of anchors. Use no less than 2 screws to secure the mounting bracket.
3. Now screw the bracket in place. Be sure that the screws are properly seated, that the bracket is securely mounted, and that it is level.



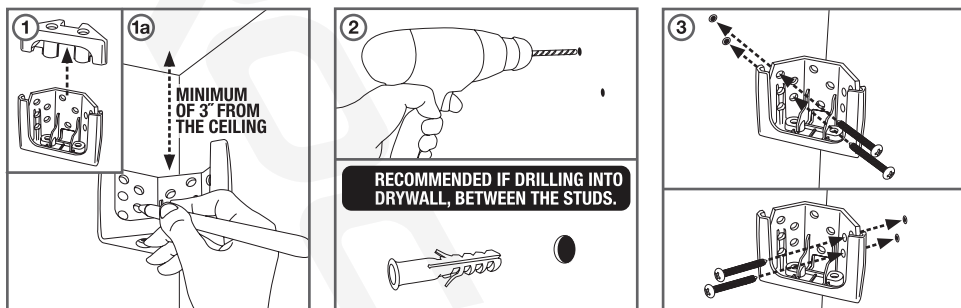
Horizontal and Vertical Wall Surface Speaker Mounting

1. Feed your speaker wires through the small opening at the bottom of the mounting bracket (fig. a) and connect them to the terminals using the included banana plugs. Alternately, you can connect the wires using any of the other connection methods detailed on page 4, item 2. Being mindful of the speaker wire, carefully slide the molded piece at the back of the speaker down into the corresponding slot on the mounting bracket. See figure b for horizontal mounting, and figure c for vertical mounting.
2. Attach the bracket cap to the top of the mounting bracket and secure it in place with 2 screws inserted into the bottom of the bracket as shown in figure d. Do not overtighten. Peel the adhesive off of the mounting bracket covers and attach to the top and bottom of the mounting bracket assembly (fig e). Repeat these same steps for vertically mounted speakers (fig f).



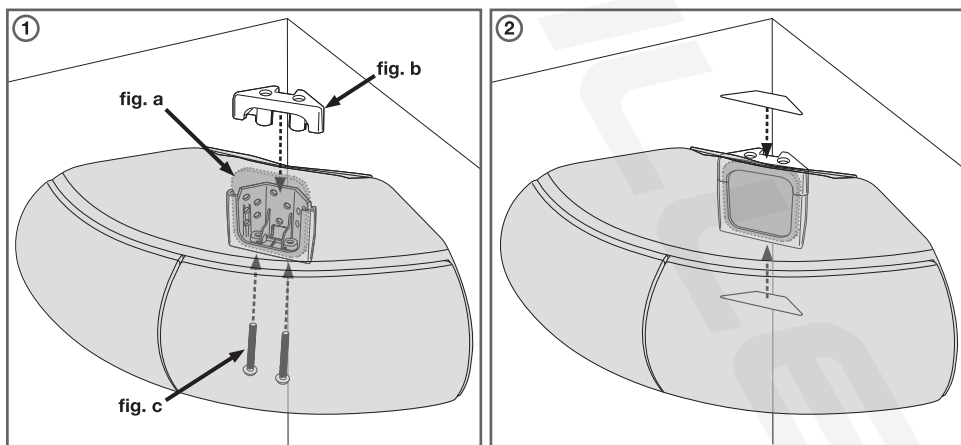
Wall Corner Bracket Installation (Horizontal Only)

1. Remove the bracket cap from the mounting bracket. Using the bracket as a template, mark the mounting screw locations on the parts of the bracket that are against the wall surfaces on either side of the corner as shown in illustration 1a.
2. Drill pilot holes for the screws and insert the appropriate anchors. Use no less than 2 anchors per side to secure the bracket.
3. Now screw the bracket in place. Be sure that the screws are properly seated and that the bracket is securely mounted.



Wall Corner Speaker Mounting

1. Feed your speaker wires through the small opening at the bottom of the mounting bracket (page 6, step 1, fig a) and use one of the connection methods detailed on page 6, item 1 to connect them to the terminals. Being mindful of the speaker wire, carefully slide the molded piece on the back of the speaker (represented by dotted lines, fig a) down into the corresponding slot on the mounting bracket. Attach the bracket cap to the top of the mounting bracket (fig. b) and secure it in place with 2 screws inserted into the bottom of the bracket as shown below (fig. c). Do not overtighten.
2. Peel the adhesive off of the mounting bracket covers and attach to the top and bottom of the mounting bracket assembly.

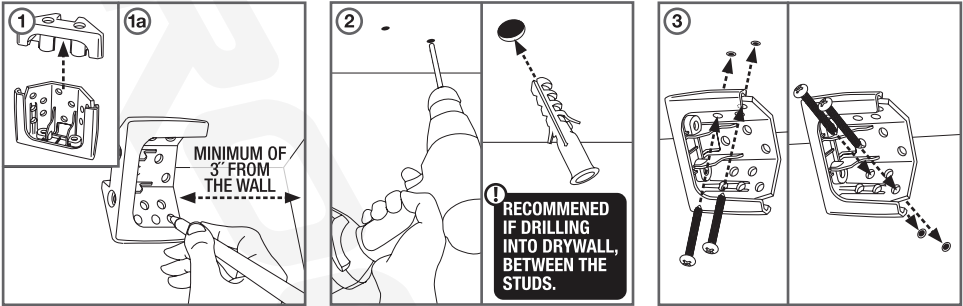


Wall/Ceiling Bracket Installation (Vertical Only)

1. Remove the bracket cap from the mounting bracket. Using the bracket as a template, mark the mounting screw locations on the parts of the bracket that are against the ceiling and wall

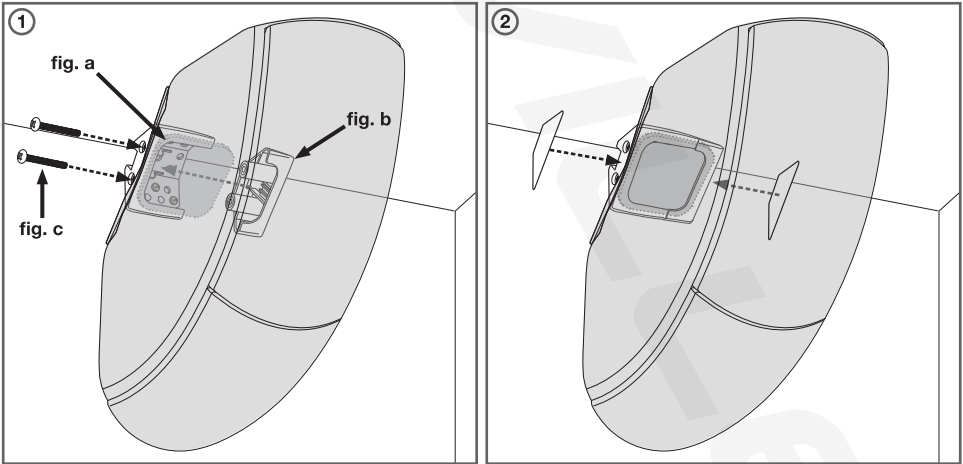
surfaces as shown in illustration 1a.

- 2. Drill pilot holes for the screws and insert the appropriate anchors. Use no less than 2 anchors per side to secure the bracket.
- 3. Now screw the bracket in place. Be sure that the screws are properly seated and that the bracket is securely mounted.



Wall /Ceiling Speaker Mounting

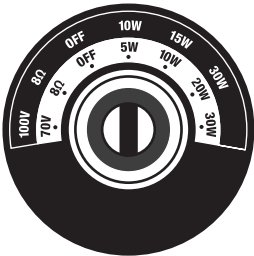
- 1. Feed your speaker wires through the small opening at the bottom of the mounting bracket (page 6, step 1, fig a) and use one of the connection methods detailed on page 6, item 1 to connect them to the terminals. Being mindful of the speaker wire, carefully slide the molded piece on the back of the speaker (represented by dotted lines, fig a) down into the corresponding slot on the mounting bracket. Attach the bracket cap to the top of the mounting bracket (fig. b) and secure it in place with 2 screws inserted into the bottom of the bracket as shown below (fig. c). Do not overtighten.
- 2. Peel the adhesive off of the mounting bracket covers and attach to the top and bottom of the mounting bracket assembly.



Setup

Tap Selector Switch

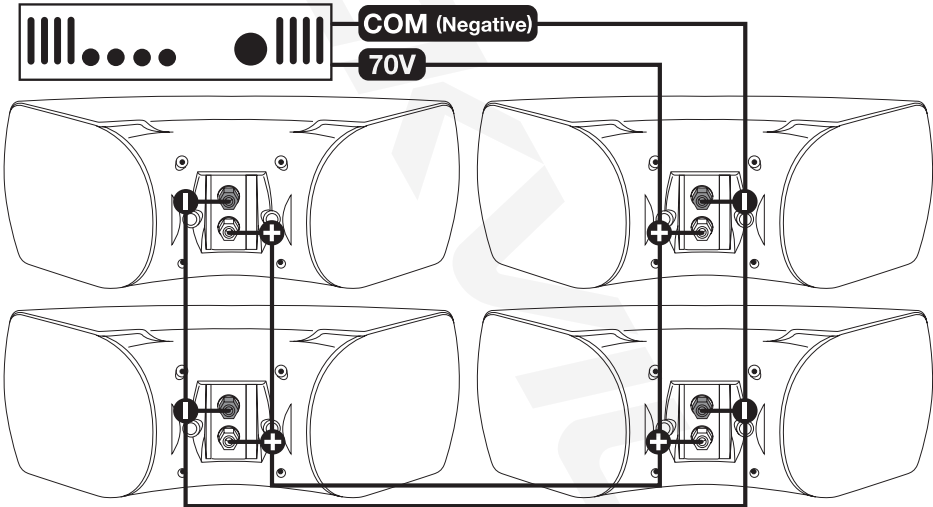
The tap selector switch allows you to set the WET-D4 to operate as 70V/100V distributed speaker line or as an 8 ohm speaker. The switch is conveniently located at the front of speaker underneath the grill. Simply remove the grill and make adjustments as needed without having to take down the speaker. On the selector switch label you will see the 70V settings in black text and the 100V settings in white text. There is also an 8 ohm position as well as an OFF position. The speaker ships with the switch in the OFF position. Make sure to keep it in the off position until you are done wiring.



70V Speaker Configuration

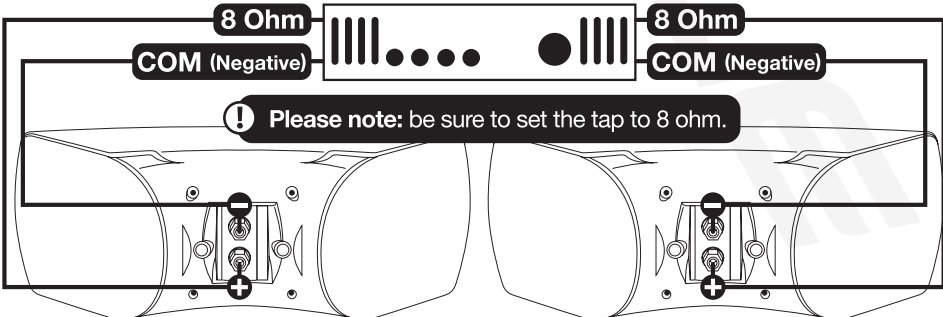
The total number of speakers multiplied by the tap value cannot exceed the output power (in watts) of your 70V amplifier. The example below shows 4 total speakers. Using the 30W taps, you have a power draw of 120W ($4 \times 30 = 120W$). A good rule of thumb is to select an amplifier with 15 to 20% greater power; in this case, an amplifier that delivers about 150W.

4 SPEAKERS CONNECTED IN PARALLEL USING 30W TAPS



8-Ohm Speaker Configuration

2 SPEAKERS CONNECTED TO AMPLIFIER WITH 8-OHM OUTPUT



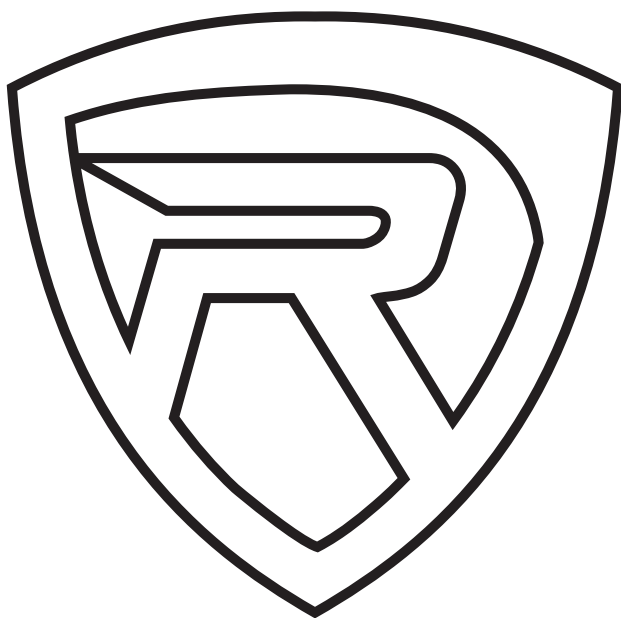
Features and Specifications

- Dual 4" woofers with polypropylene cones
- 1" Kapton voice coil
- 9.75oz ferrite magnet
- 1" silk dome tweeter
- Built-in 12dB/octave crossover with dynamic speaker protector
- 2nd order crossover with a 2500Hz roll-off
- Front facing port for increased bass response
- Works for 70V, 100V, and 8 ohm applications
- Tap switch behind the grille for ease of use
- Tap switch features OFF position to protect speaker during wiring
- 5-way binding post terminals
- IP55 rating for outdoor or indoor use (protected from dust and water spray projected from any angle)
- Rugged waterproof ABS cabinet
- Waterproof metal grille
- Banana plug cable harness included for easy installation
- Includes wall mounting hardware
- Wall bracket with multiple fixed mounting angles
- Frequency Response: 70Hz – 20Khz
- Sensitivity: 89dB
- Color: Black (Also available in white)
- Weight: 5.51Lbs each
- Cabinet dimensions: 9.84" x 6.92" x 5.62"

Troubleshooting

PROBLEM	SOLUTION
No sound/ distorted sound	<div>1. Check all connections.</div> <div>2. Check that the tap is properly set.</div> <div>3. Check the volume/levels settings of your amplifier.</div> <div>4. If volume and treble/bass settings are maxed out, turn one of them down.</div> <div>5. Check volume and gain settings on all input sources.</div> <div>6. If using a mixing console make sure the fader and balance are set to center positions and levels are increased. Make sure the mixer is plugged into the correct input.</div>

מכירה פומבית



RockvilleAudio.com

© 2022 ROCKVILLE // Features and specifications are subject to change and/or improvement without notice.