

# ROCKVILLE

## WET-40

4" 70V INDOOR/OUTDOOR COMMERCIAL  
SWIVEL MOUNT WALL SPEAKER

### OWNER'S MANUAL

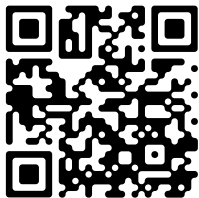
**ATTENTION:**  
**WATCH THIS VIDEO BEFORE FIRST USE!**

#### *Who reads manuals?*

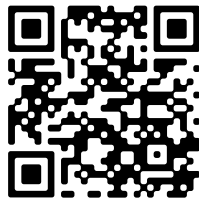
Scan the **QR codes** or go to the **URLs** to access how-to video(s), the owner's manual, and other important information you may need to get the most out of your item.

**If you prefer written instructions, please read ahead!**

*With Rockville you get many options.*



[rockvillesupport.com/wet-40b](https://rockvillesupport.com/wet-40b)



[rockvillesupport.com/wet-40w](https://rockvillesupport.com/wet-40w)

**Missing items?** If you ordered a bundle that includes more than one product and you are missing part of your bundle then it just means your order shipped from two different warehouses. You will receive the remaining items very soon. If you have any concerns or inquiries, feel free to call our customer support center at 1-646-758-0144, 24 hours a day/7 days a week.

Thank you for purchasing this Rockville product. Please read this owner's manual carefully for proper use of your Rockville WET-40 70V commercial speaker. Should you need assistance, please call our technical help line at 1-646-758-0144, 24 hours a day/7 days a week.

## Includes

- Two speakers
- Two wall mounting brackets
- Mounting hardware
- Owner's manual
- Warranty card

## IMPORTANT SAFETY INSTRUCTIONS



**TO REDUCE THE RISK OF ELECTRICAL SHOCK, NEVER OPEN THE UNIT. THERE ARE NO SERVICEABLE PARTS INSIDE. WE RECOMMEND SENDING THE UNIT TO THE ROCKVILLE SERVICE CENTER FOR ANY REPAIRS.**

- Always mount this unit in a safe and stable manner. Ensure that the mounting surface is structurally sound and can support the weight of the speaker.
- When mounting the speaker, do not use nails, adhesives, or other inappropriate devices. Long-term use and vibrations may cause it to fall easily.

## What is 70 Volt?

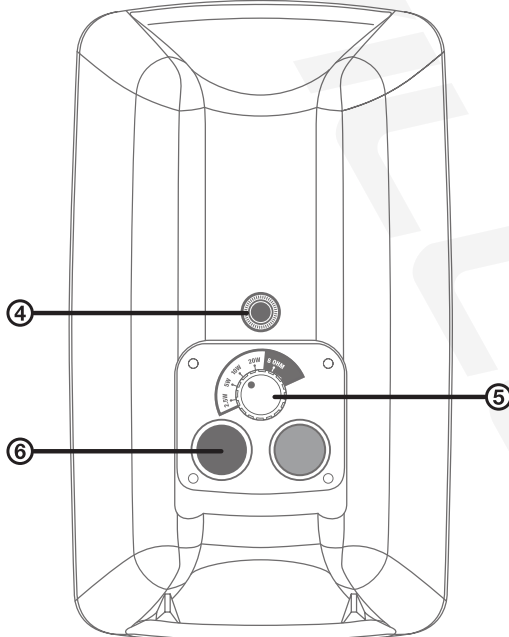
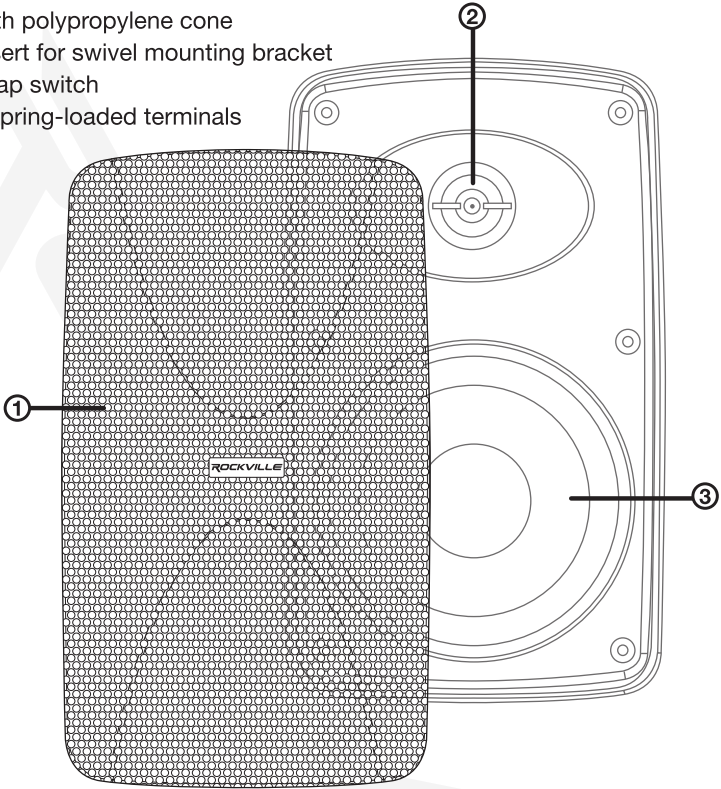
70-volt systems are the number one choice for any application where you want to install multiple speakers. With 70 volt there are a lot of advantages over 8-ohm systems. One of the main advantages is the simplicity of the wiring as well as how easy it is to match up the speakers with an amplifier. You always want your 70-volt amp to have at least 15 or 20% more power than the combined watts your speakers are tapped at. For example, if you have a 180-watt/70-volt amplifier, you can install fifteen 70-volt speakers that are tapped at 10 watts each or thirty 70-volt speakers that are tapped at 5 watts each as long as they total close to 150 watts. When we say the word tap, what we are referring to is the selector knob on the back (above the terminals) of the WET-40 speakers. It allows you to set how many watts the built-in transformer will allow the speaker to get from the amplifier. These speakers have 70V taps set at 2.5, 5, 10, and 20 watts. This range of taps allows for full customization of the sound for the space in which the speakers are installed. In a restaurant, for example, you can tap your dining room speakers at 10 watts, the speakers in the outside seating area at 20 watts, the ones in the hallway at 5 watts, and the speakers in the bathrooms at 2.5 watts. Another great feature of 70-volt speakers is that you can mix and match any type whether they are wall mounted speakers (such as these), ceiling speakers, subwoofers, etc.

Another benefit of 70-volt speaker set-ups is the ability to run very long lines of speaker wire without signal loss. And, the wiring is very simple. You just connect all the positive terminals of the speakers to the positive 70-volt terminal(s) of the amplifier. The negative terminals on the speaker get connected to the negative (COM) terminal(s) of the amp. You do not have to worry about impedance as the power is constant.

Please be sure to check out Rockville's complete selection of high-quality, 70-volt speakers, amplifiers, and accessories.

## Parts

1. Rustproof/waterproof aluminum grill
2. 13mm PEI tweeter
3. 4" Woofer with polypropylene cone
4. Threaded insert for swivel mounting bracket
5. 70V/8-ohm tap switch
6. Waterproof spring-loaded terminals










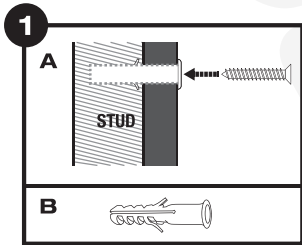
# Installation and Mounting

## Tools needed

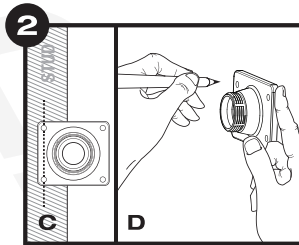
- Phillips-head screwdriver
- Drill
- Adjustable wrench

## Mounting Hardware

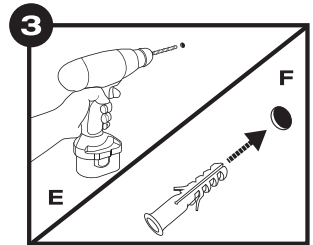
molded nut	ball shaft	mounting bracket	safety cable	metal bar	screws	lock nut
 x2	 x2	 x2	 x2	 x1	 x8	 x2



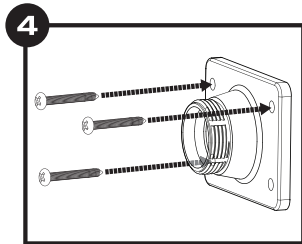
Determine an area to install the mounting bracket. We recommend mounting it to a wood stud (A). If you must install it on drywall, use wall anchors (B). Be sure that you have chosen the appropriate type and that they are installed properly.



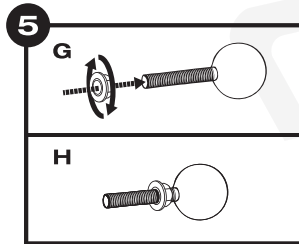
Align the left side of the bracket with a stud (C). Place a mark at the top and bottom left side openings as well as the top right opening (D).



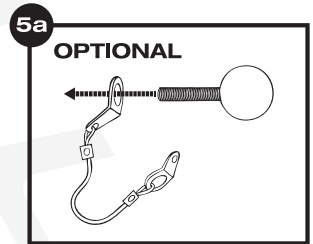
Drill holes where you made your marks (E). Ensure they properly align with the bracket. If using anchors, ensure the holes are deep and wide enough to accommodate them (F).



Use 3 of the included screws to secure the top left, bottom left, and top right corners of the bracket. If you are using anchors, ensure that you are using the proper screws for your anchor type.

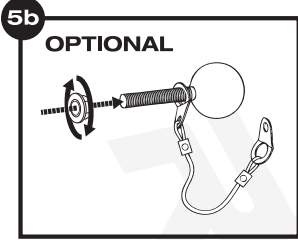


Thread the lock nut onto the shaft with the nut's round surface facing away from the ball (G). Tighten it all the way onto the threaded shaft as shown in the illustration above (H).

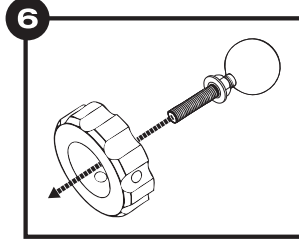


If you are using the safety chain, slide the end with the largest opening onto the ball shaft.

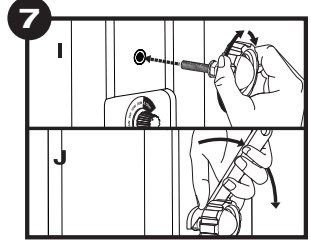
# Installation and Mounting (continued)



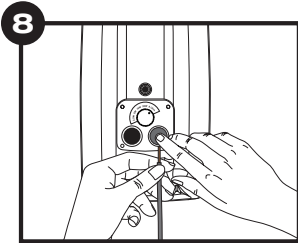
Thread the lock nut onto the shaft with the nut's round surface facing away from the ball. Tighten it all the way onto the threaded shaft, but do not tighten it flush with the ball.



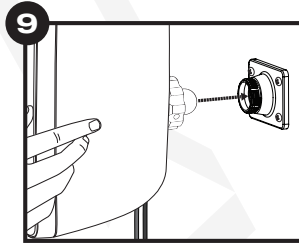
Slide the ball shaft assembly through the back of the molded nut.



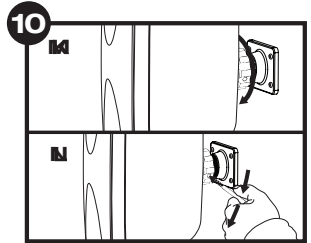
Screw the ball shaft/molded nut assembly into the threaded insert at the back of the speaker until it is fully seated against the opening (I). Use a wrench to tighten the nut and ensure it is completely flush with the speaker housing (J).



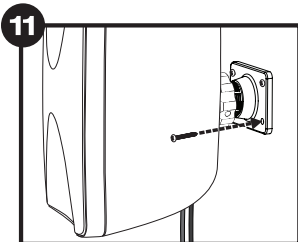
Strip a half inch of sheathing from the end of the speaker wire. Push the top of the terminal and insert the exposed wire into the terminal's opening. Be sure to observe proper polarity.



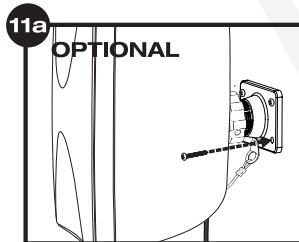
Use both hands to hold the speaker and gently push the ball into the wall bracket. Check that the ball is properly seated.



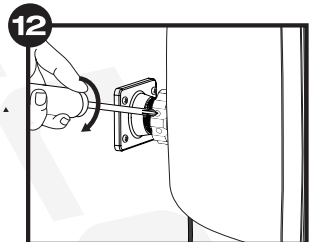
Hand tighten the molded nut (K). Orient the speaker in the desired direction. Insert the metal bar into one of the holes on the molded nut and tighten it to lock in the position (L). Do not overtighten.



Insert the last screw into the lower right hand hole and tighten it.



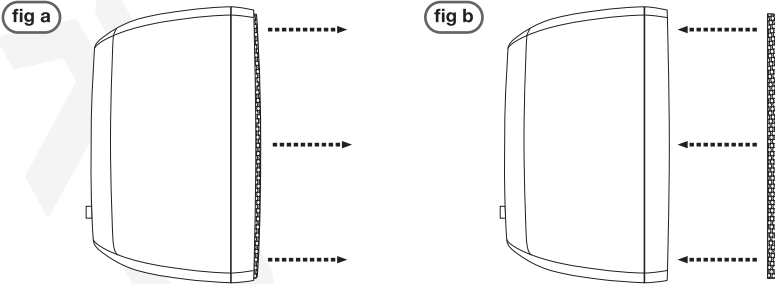
If you are using the safety chain, insert the last screw into the open end of the safety cable. With the safety chain attached, insert the screw into the lower right hand hole and tighten it.



After making final orientation adjustments to the speaker, use a Phillips head screw driver to tighten the screw on the side of the molded nut to ensure the bracket is fixed in the desired position. Do not overtighten.

# Removing/Attaching the Grill

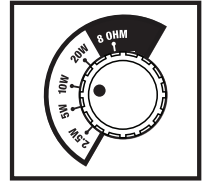
To remove the grill, carefully grip the sides of the grill and gently pull it away from the speaker (fig a). To attach the grill, simply align the edges with the inner groove on the front of the speaker and press gently until the grill is securely seated in place (fig b).



## Setup

### Tap Selector Switch

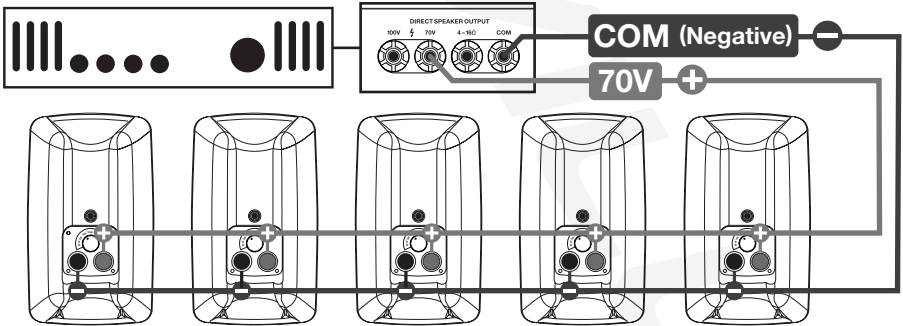
The tap selector switch allows you to set the WET-40 to operate as 70V distributed speaker line or as an 8 ohm speaker. The switch is located at the back of speaker above the terminals. On the selector switch label you will see the 70V settings in black text and the 8 ohm setting in white text.



### 70V-Speaker Configuration

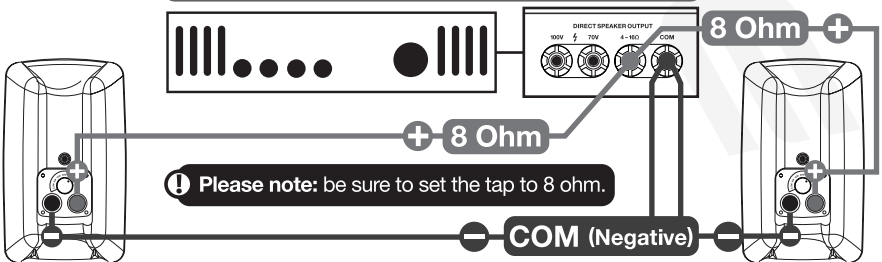
The total number of speakers multiplied by the tap value cannot exceed the output power (in watts) of your 70V amplifier. The example below shows five total speakers. Using the 10-watt taps, you will need an amplifier with at least 75 watts (10W taps x 5 speakers = 50W). A good rule of thumb is to select an amplifier with 15% to 20% greater power; in this case, an amplifier that delivers about 75 watts.

5 SPEAKERS CONNECTED IN PARALLEL USING 10W TAPS



### 8-Ohm-Speaker Configuration

2 SPEAKERS CONNECTED TO AMPLIFIER WITH 8-OHM OUTPUT

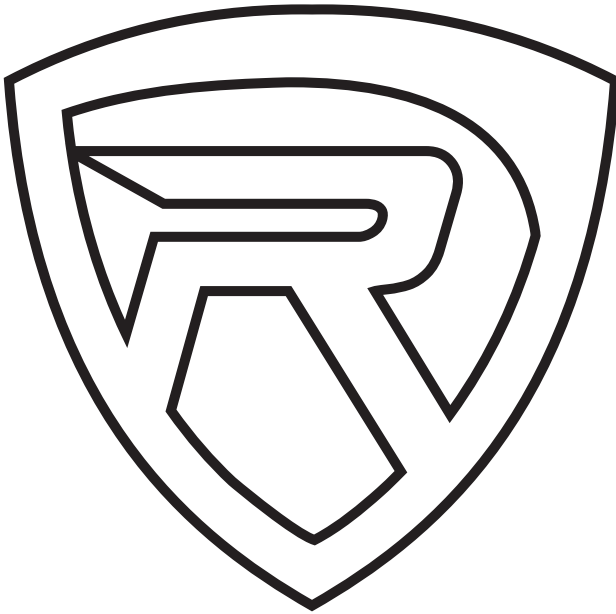


## Features and Specifications

- 70V or 8 ohm (use tap switch)
- 360° Swivel bracket
- Perfect for commercial or home audio applications
- IP55 rating means it can withstand jet streams spraying it from any angle without any damage making these speakers perfect for outdoor use or indoor use.
- Cabinet is waterproof
- Aluminum grill is waterproof and rustproof
- Weather resistant
- Powder coated steel mounting brackets that pass a 96 hour saltwater spray test
- 4" Woofer with Polypropylene cone
- 13mm PEI tweeter is very efficient and has great sound quality
- Frequency Response: 70Hz – 20Khz
- Sensitivity: 85dB ±2dB
- RMS Power: 35W (when using 8 ohm)
- Nominal impedance: 8 ohm
- Waterproof spring loaded terminals
- Built-in transformer supports 70V installations
- Built-in tap switch to easily select your 70V power
- Color: Available in black or white
- Weight: 3.00 Lbs each
- Cabinet dimensions: 7.87" x 4.96" x 5.55"

## Troubleshooting

PROBLEM	SOLUTION
No sound/ distorted sound	<ol style="list-style-type: none"><li>1. Check all connections.</li><li>2. Check that the tap is properly set.</li><li>3. Check the volume/levels settings of your amplifier.</li><li>4. If volume and treble/bass settings are maxed out, turn one of them down.</li><li>5. Check volume and gain settings on all input sources.</li><li>6. If using a mixing console make sure the fader and balance are set to center positions and levels are increased. Make sure the mixer is plugged into the correct input.</li></ol>



**RockvilleAudio.com**

© 2022 ROCKVILLE // Features and specifications are subject to change and/or improvement without notice.