

ROCKVILLE VOL70 Series Owner's Manual

Thank you for purchasing this Rockville VOL70 Series Wall Volume Controller. Please read this owner's manual carefully for proper use. Should you need technical assistance, please call our help line at 1-646-758-0144, 24 hours a day/7 days a week.

If you have a 70 volt amplifier that is one zone only, you can wire the outputs of the amplifier to the zone controller which, in turn, is wired to the speakers within the zone. All wiring is done in parallel (+ to + and - to -). If you have a multi zone 70V amplifier then you can go out from any zone and into the controller and then out from the controller to the speakers (each speaker is wired from one to the next in parallel). The end result is that you can control the volume from that room without having to change the volume from the amplifier itself.

The wiring is simple. Connect the positive output of your amp to the positive input port of the wall control. Now connect the negative (COM) output on your amp to the wall control's negative input. Next, wire all the speakers in parallel (+ to + and - to -). Connect the positive lead to the positive output terminal of the wall control and the negative lead to the negative output terminal.

70 volt systems are the number one choice for applications where you want to install many speakers. With 70 volt there are a lot of advantages over 8-ohm systems. One of the main advantages is the simplicity of the wiring as well as how easy it is to match up speakers with the amplifier. For example, you can buy one 70V amplifier with 150 watts and you can install speakers that total around 120 watts. It does not matter if it is 12 speakers that are 10 watts each or 24 speakers that are tapped at 5 watts each. You always want your 70 volt amp to have at least 15 to 20% more power than the combined watts your speakers are tapped at.

When we say the word tap, we are referring to the switch that is located on the rear of these speakers where you can select how many watts you want the speaker to play. What this does is limit how many watts the built-in transformer on the speaker will allow the speaker to get from the amplifier. This gives you full customization over the sound for your space. In a restaurant for example you can tap your dining room speakers at 6 watts, and the hallway or bathroom speakers at 3 watts.

Another great feature with 70 volt is you can mix and match any 70 volt speakers whether they are ceiling speakers, wall mounted speakers, subwoofers, etc. 70 volt systems allow you to run very long lines of speaker wire without signal loss. This is ideal when running long speaker leads.

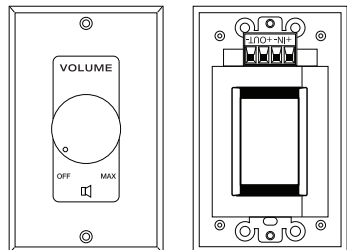
FEATURES AND SPECIFICATIONS

VOL7035/VOL7035 BLACK/VOL70100/VOL70100 BLACK/VOL70200 WHITE/VOL70200 BLACK

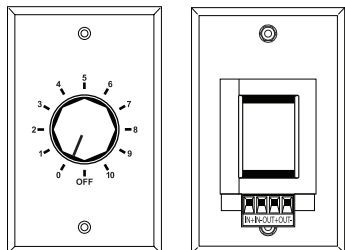
- Premium-quality volume control
- 70, 100 volt operation (w/with lower constant voltage systems)
- 16-24 AWG wire inputs
- Power Rating: VOL7035 - 35W (works w/35W and under), VOL70100 - 100W (works w/100W and under), VOL70200 - 200W (works w/200W and under)
- Total Attenuation: 30dB (VOL7035, VOL70100), 0 - -100dB (VOL70200)
- Rotating volume controls with 11 (VOL7035, VOL70100) and 12 (VOL70200) step attenuation and absolute off
- Detachable Euro-block terminal connector
- Rugged ABS Frame
- Single gang plate fits standard single gang electrical boxes
- Plastic Plates with matching same color knobs
- Internal board is protected from dust with special tape
- Mounting screws are included
- Dimensions (H x W x D, including the knob): VOL7035 - 4.5" x 2.75" x 2.81", VOL70100 - 4.5" x 2.75" x 2.88", VOL70200 - 4.5" x 2.75" x 3"
- Item Weight: VOL7035 - 0.71 Lbs, VOL70100 - 0.77 Lbs, VOL70200 - 1.1Lbs
- Available in White or Black

DETAILS

VOL7035/VOL70100/VOL70200

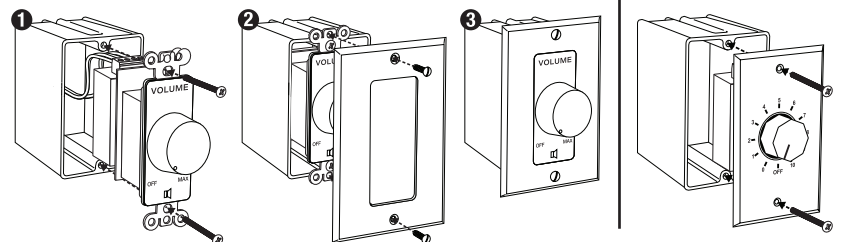


VOL7035 SS/VOL70100 SS/VOL70200 SS



INSTALLATION

It is recommended that this volume control be mounted in a "backless" junction box so it gets adequate ventilation. If an enclosed box is to be used, we recommend a deep box (3.5 inches in depth).

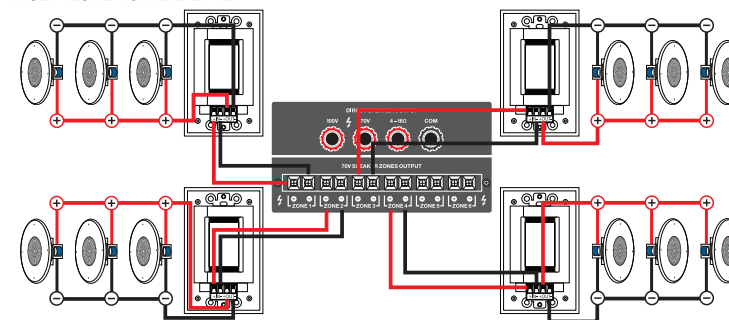


VOL7035 SS/VOL70100 SS/VOL70200 SS

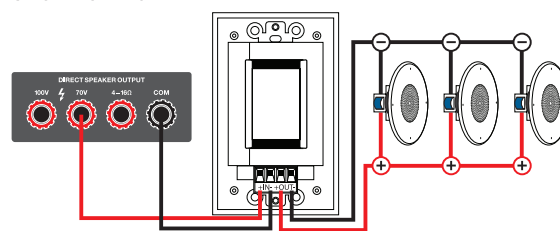
- Premium-quality volume control
- 70, 100 volt operation (w/with lower constant voltage systems)
- 16-24 AWG wire inputs
- Power Rating: VOL7035 SS - 35W (works w/35W and under), VOL70100 SS - 100W (works w/100W and under), VOL70200 SS - 200W (works w/200W and under)
- Total Attenuation: 30dB (VOL7035 SS, VOL70100 SS), 0 - -100dB (VOL70200 SS)
- Rotating volume controls with 11 (VOL7035 SS, VOL70100) and 12 (VOL70200) step attenuation and absolute off
- Detachable Euro-block terminal connector
- Rugged Stainless Steel Frame
- Stainless steel single gang plate fits standard single gang electrical boxes
- Metal plates with Bakelite knobs
- Internal board is protected from dust with special tape
- Mounting screws are included
- Dimensions (H x W x D, including the knob): VOL7035 SS - 4.5" x 2.75" x 2.81", VOL70100 SS - 4.5" x 2.75" x 2.88", VOL70200 SS - 4.5" x 2.75" x 3"
- Item Weight: VOL7035 SS - 0.75 Lbs, VOL70100 SS - 0.82 Lbs, VOL70200 SS - 1.1Lbs

WIRING

MULTI-ZONE 70V AMPLIFIER



SINGLE ZONE 70V AMPLIFIER



Scan the QR codes or go to URLs below to access how-to video(s), the owner's manual, and other important information you may need to get the most out of your item.



rockvillesupport.com/vol70200-black



rockvillesupport.com/vol70200-white



rockvillesupport.com/vol70200-ss



rockvillesupport.com/vol70100-black



rockvillesupport.com/vol70100



rockvillesupport.com/vol70100-ss



rockvillesupport.com/vol7035-black



rockvillesupport.com/vol7035



rockvillesupport.com/vol7035-ss