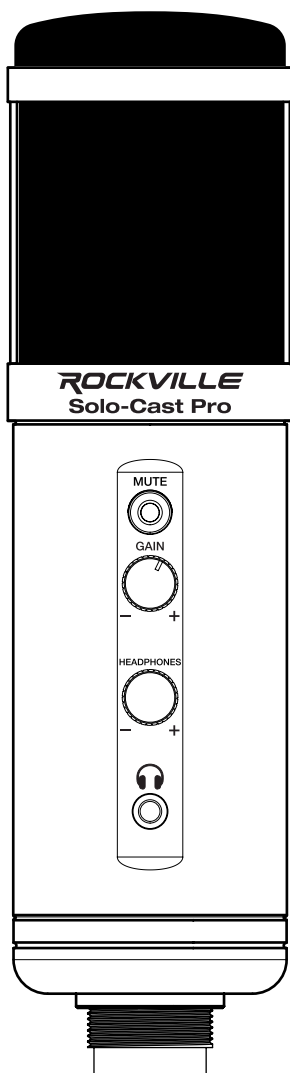
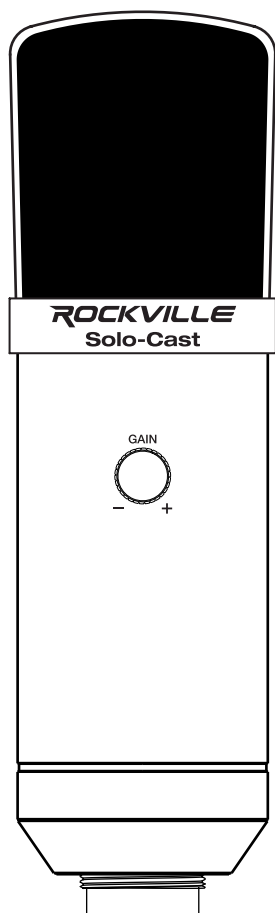


ROCKVILLE



Solo-Cast Series
USB CONDENSER MICROPHONE
OWNER'S MANUAL

Thank you for purchasing the Rockville Solo-Cast or Solo-Cast Pro USB Condenser Microphone. Please read this owner's manual carefully for proper use of your Solo-Cast series USB mic. Should you need technical assistance, please call our technical help line at 1-646-758-0144, Monday through Friday, 9am to 5pm EST.

What's Inside

Solo-Cast/Solo-Cast Pro

- Microphone
- 6-foot USB cable
- Metal shock mount
- Gold pop filter
- Metal tabletop stand
- Owner's manual
- Warranty

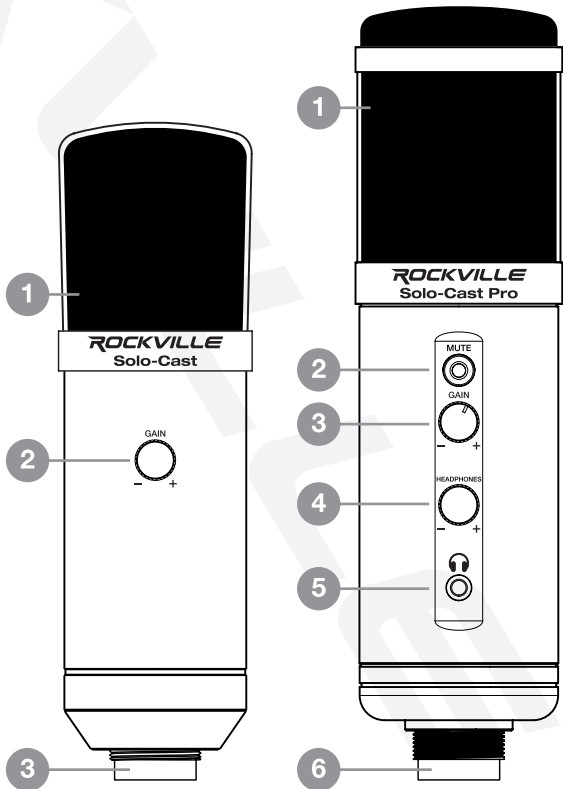
Functions

Solo-Cast

1. Windscreen
2. Gain
3. USB Type B port

Solo-Cast Pro

1. Windscreen
2. Mute button: Mutes mic input
3. Gain
4. Headphone output volume
5. 3.5mm headphone jack
6. USB Type B port

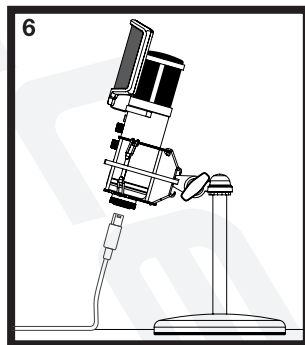
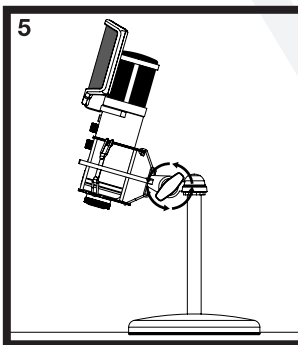
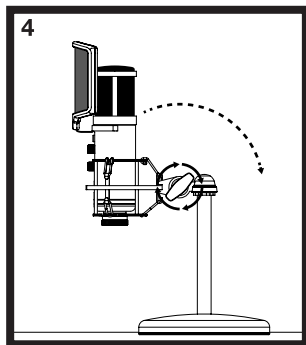
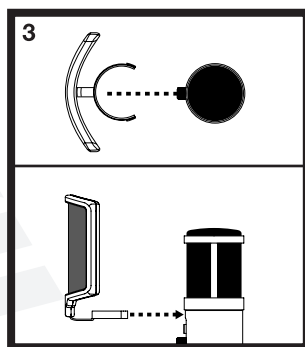
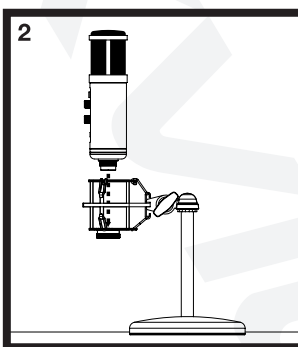
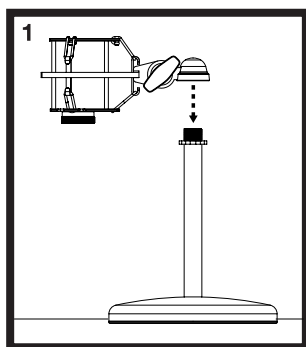


Setting Up

The Solo-Cast and Solo-Cast Pro microphones connect to your computer via the included USB Type A to Type B cable and are compatible with computers running Windows 7 and later or Mac OS X 10.9 and later (OS X requires DAW software). Follow the steps below to set up your mic.

Solo-Cast Pro

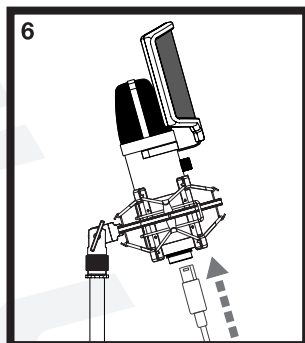
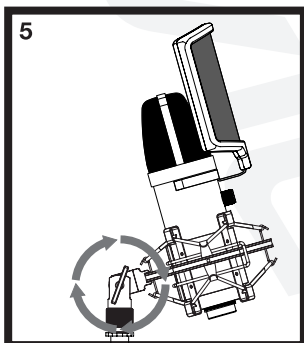
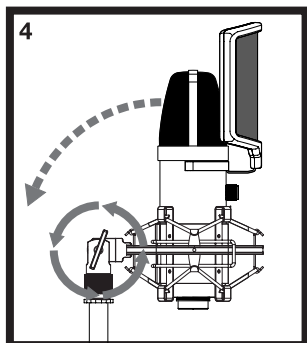
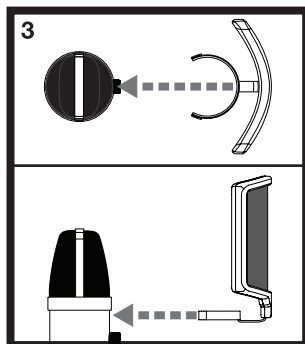
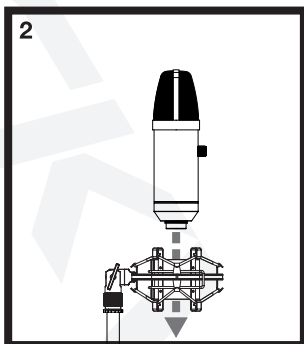
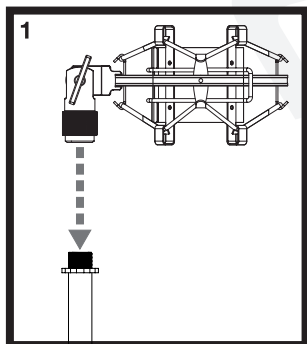
1. Attach the shock mount to the table top stand by screwing it onto the 5/8" threaded adapter. Do not over-tighten.
2. Insert the mic into the shock mount and screw it onto the threaded collar at the bottom of the mount. Ensure that the front of the mic (indicated by the location of the level knobs) is facing the sound source.
3. Clip the pop filter onto the mic.
4. Loosen the shock mount's locking knob and adjust the mic's angle to the desired position.
5. Tighten the locking knob to secure the mic at the current position.
6. Plug the Type B end of the USB cable to the USB output located at the base of the microphone. Plug the other end of the cable to a USB port on your computer.



Setting Up

Solo-Cast

1. Attach the shock mount to the table top stand by screwing it onto the 5/8" threaded adapter. Do not over-tighten.
2. Insert the mic into the shock mount. Ensure that the front of the mic (indicated by the location of the level knob) is facing the sound source.
3. Clip the pop filter onto the mic.
4. Loosen the shock mount's locking knob and adjust the mic's angle to the desired position.
5. Tighten the locking knob to secure the mic at the current position.
6. Plug the Type B end of the USB cable to the USB output located at the base of the microphone. Plug the other end of the cable to a USB port on your computer.



Operation

Windows

Solo-Cast series mics are compatible with computers running Windows 7 and later. DAW software such as Audacity, Ableton Live, Logic, ProTools, Reason, etc. is required. Follow the steps below to install the microphone and adjust its input level via the computer's system settings.

Operation

1. Plug the USB cable to a USB port on your PC. The computer will recognize the mic and in the lower right hand corner you should see the message “Setting up a device” (Fig a). Once the mic is set up, you should see the message “Device is ready” (fig b).

Fig.

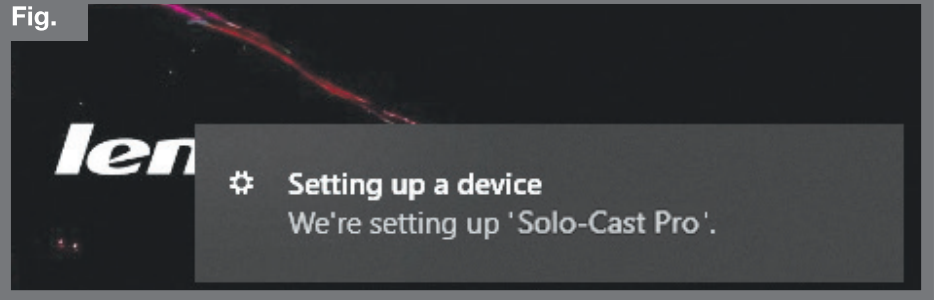
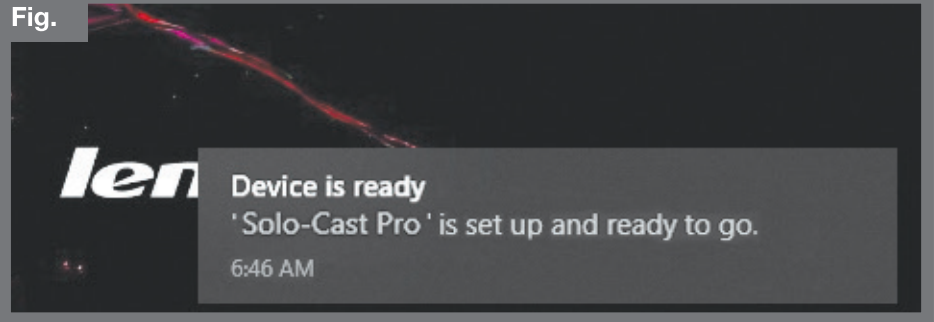
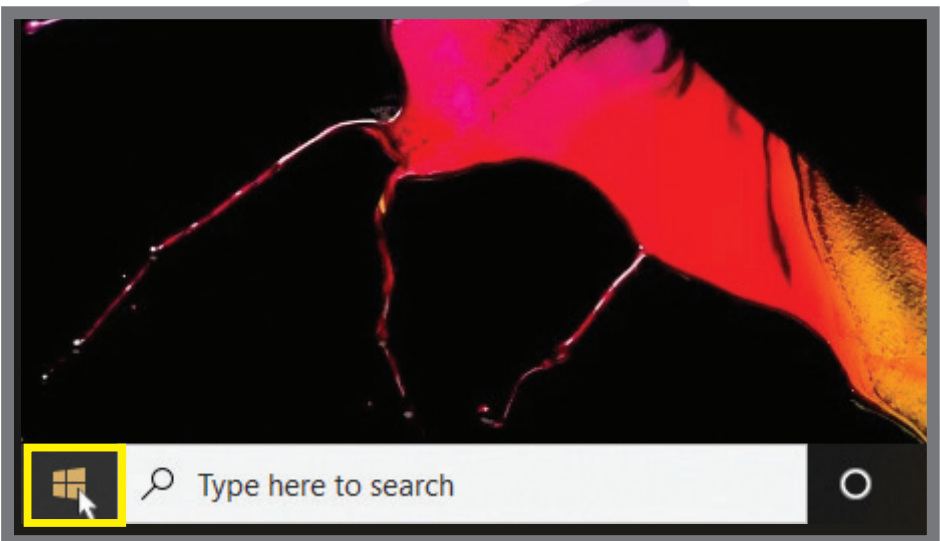


Fig.

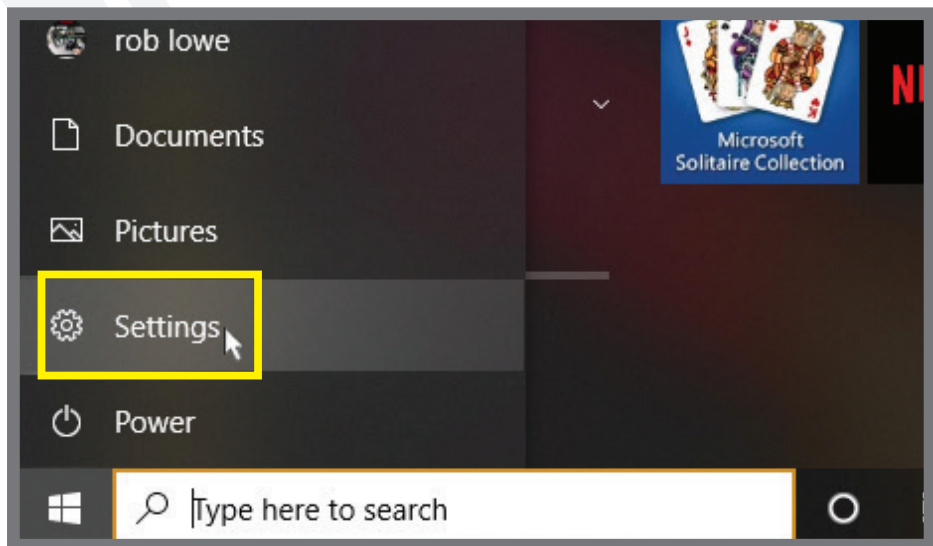


2. Click on the WINDOWS icon in the lower left hand corner of the screen to bring up the START menu.

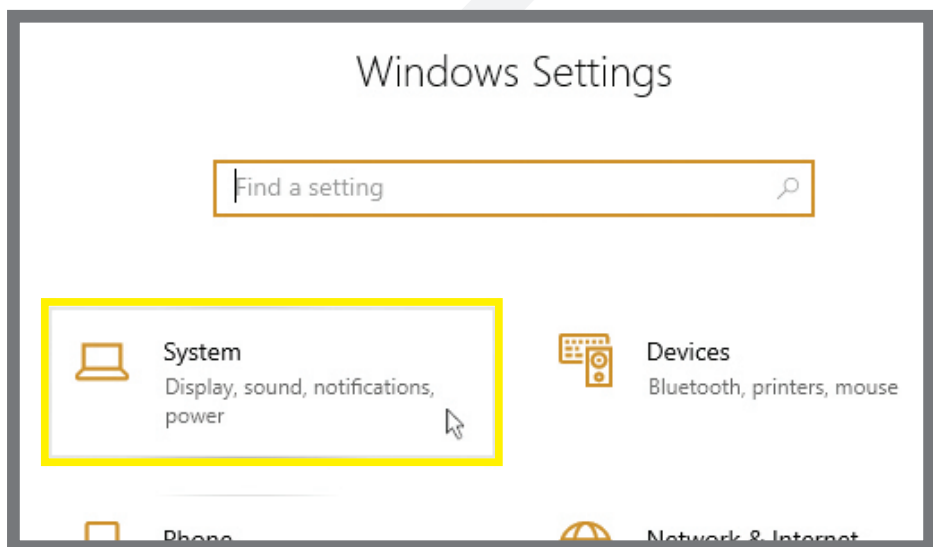


Operation

3. In the START menu, click on the SETTINGS icon.

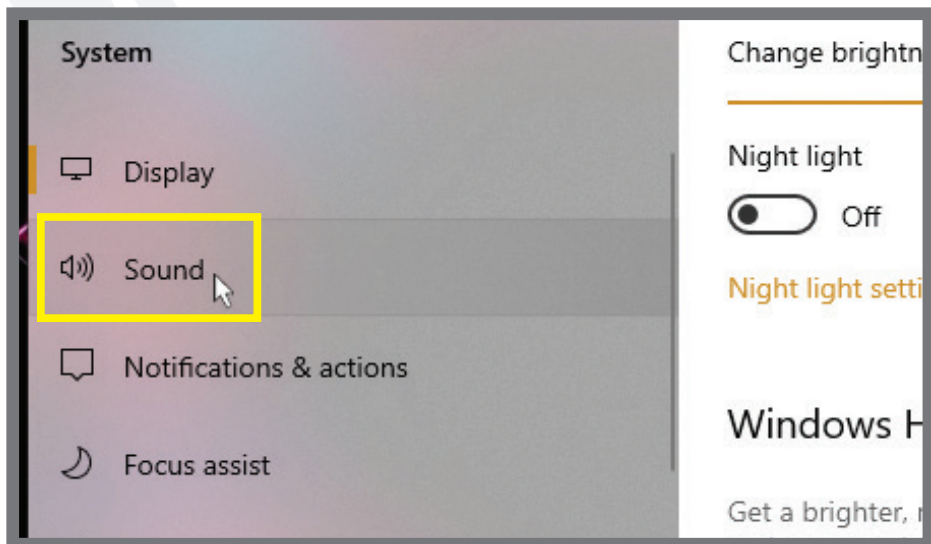


4. In the SETTINGS menu, click on SYSTEM.

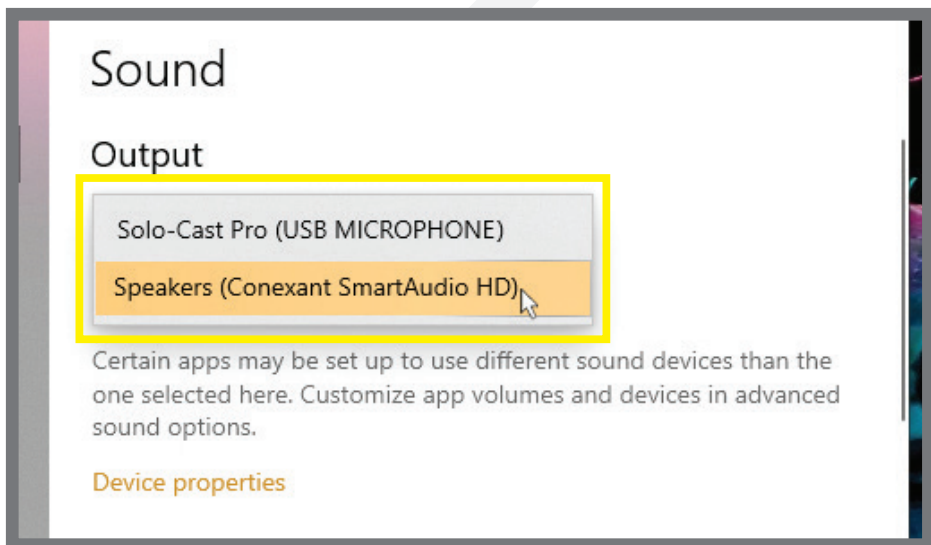


Operation

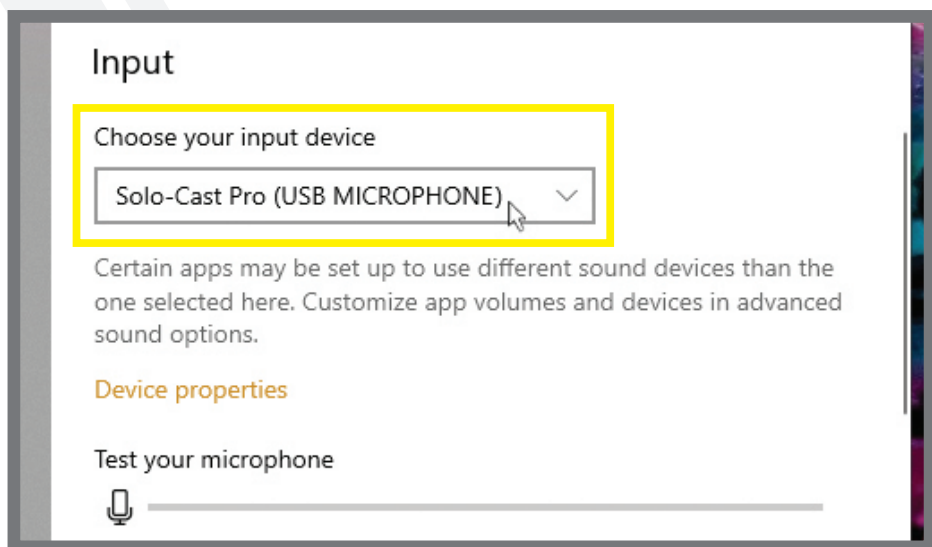
5. In the SYSTEM menu, click on SOUND.



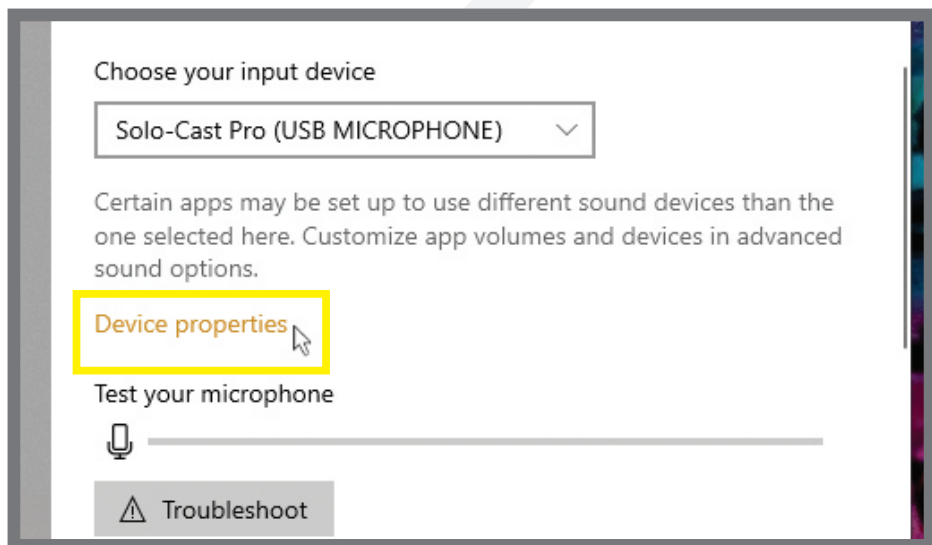
6. In the SOUND menu, select your output device i.e. speakers; either internal or external.



7. Scroll down and select Solo-Cast or Solo-Cast Pro as your input device.



8. Now click on device properties.



9. In the DEVICE SETTINGS menu you can change the device name and disable the microphone if necessary (fig. a). You can also adjust and test the microphone's volume level (fig. b). Alternately, you can adjust and test the volume in the SOUND menu (see inset). Additional changes to the microphone's settings can be made by clicking on

ADDITIONAL DEVICE PROPERTIES (fig. c). There are four options available: GENERAL (Fig. d), LISTEN (fig. e), LEVELS (fig. f), and ADVANCED (fig. g).

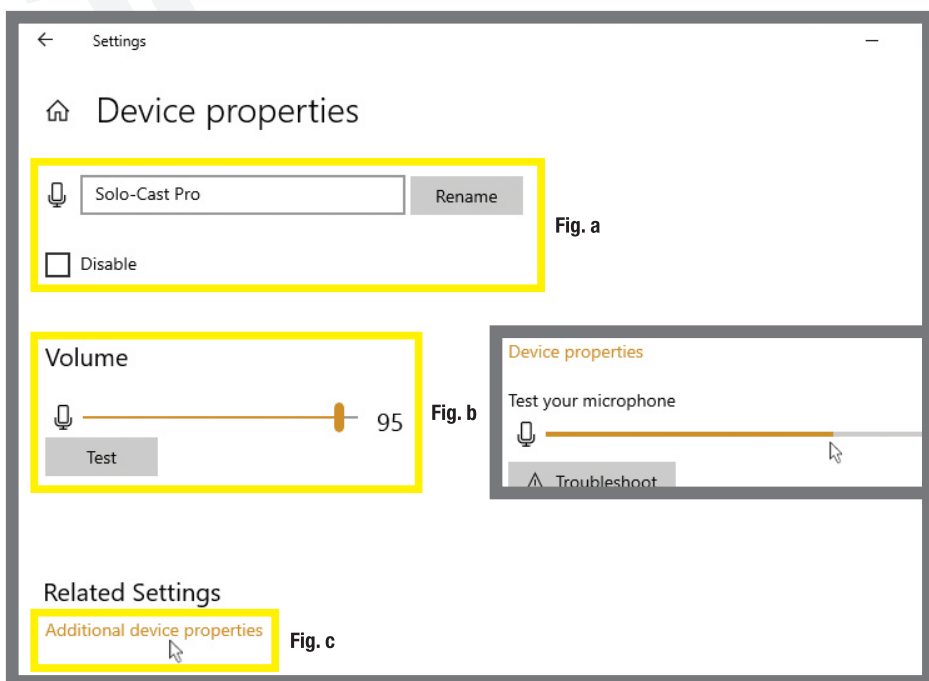


Fig. d

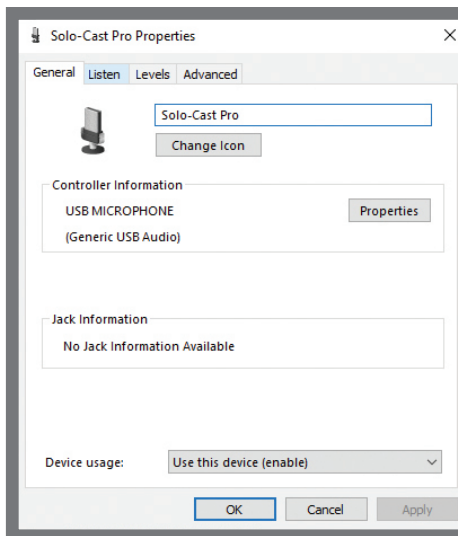


Fig. e

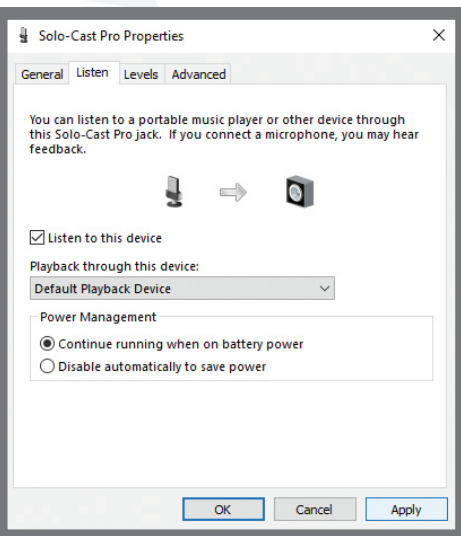


Fig. f

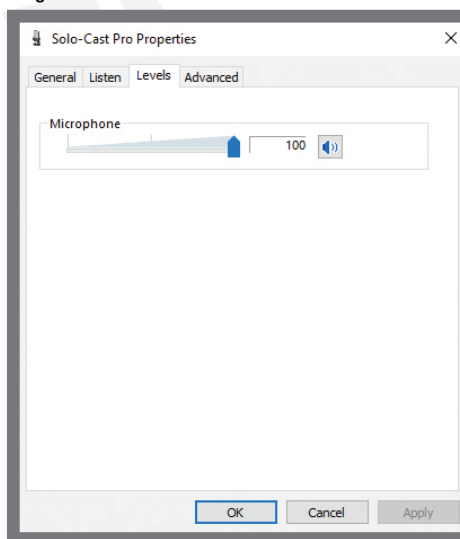
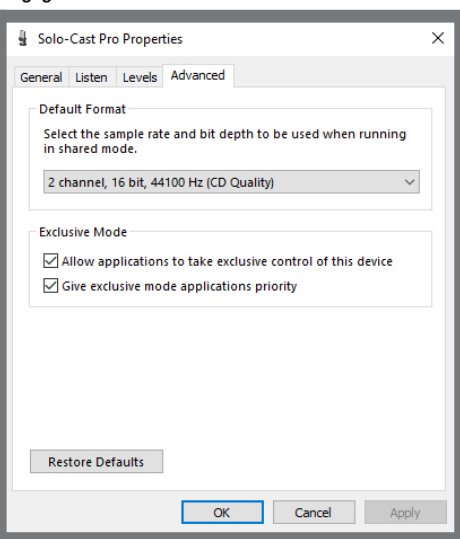
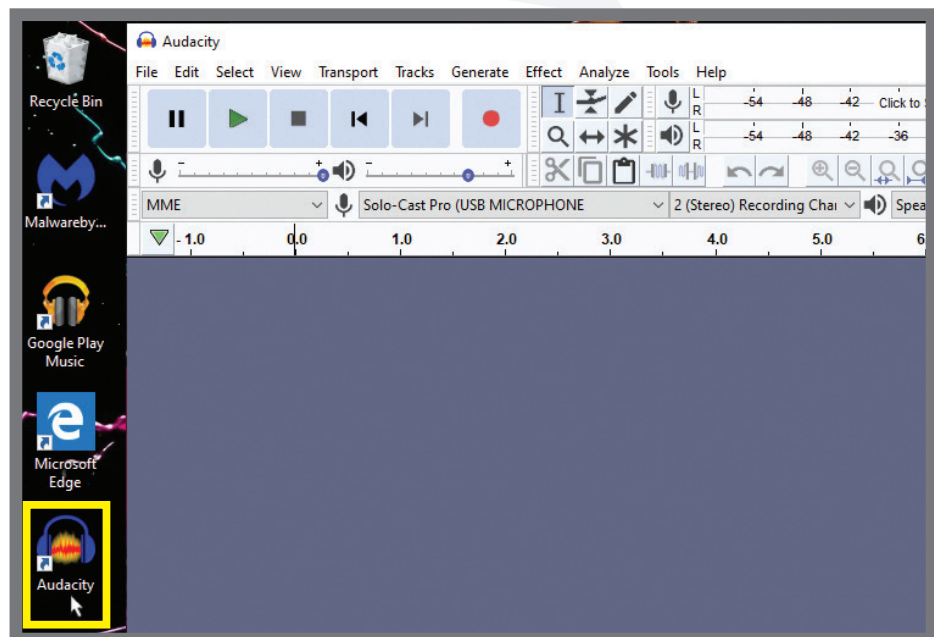


Fig. g



If you make any changes, click on APPLY to save those changes. Then click OK to exit the additional properties menu and return to the SETTINGS menu. Close the settings menu and return to the desktop.

10. Now launch your DAW software. Refer to the software's instruction manual for Directions on using external input devices.

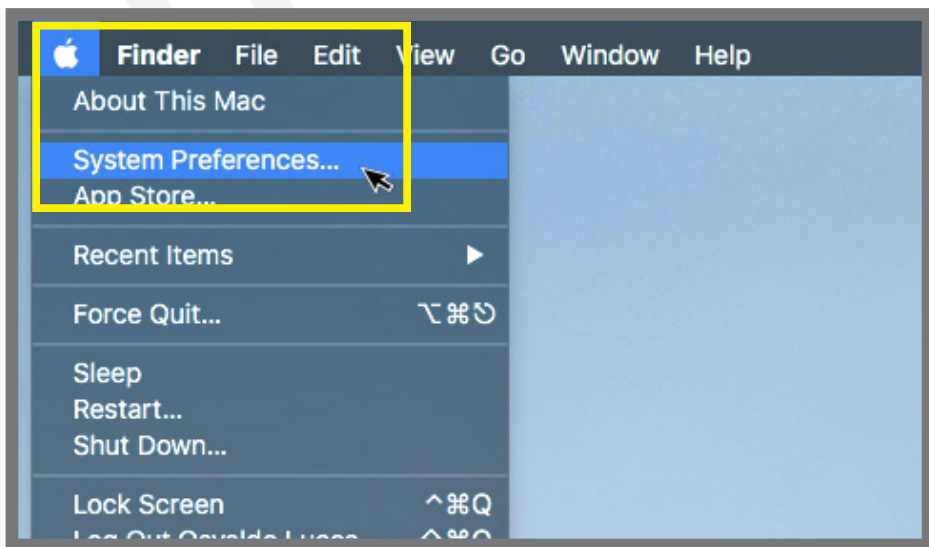


Operation

Mac OS X

Solo-Cast series mics are compatible with computers running Mac OS x 10.9 and later. DAW software such as Garage Band, Ableton Live, Logic, ProTools, Reason, etc. is required. Follow the steps below to adjust the mic's input level via the computer's system preferences.

1. Plug the USB cable to a USB port on your Mac. Click on the APPLE icon on the top left hand corner of the desktop. In the drop-down menu click on SYSTEM PREFERENCES.

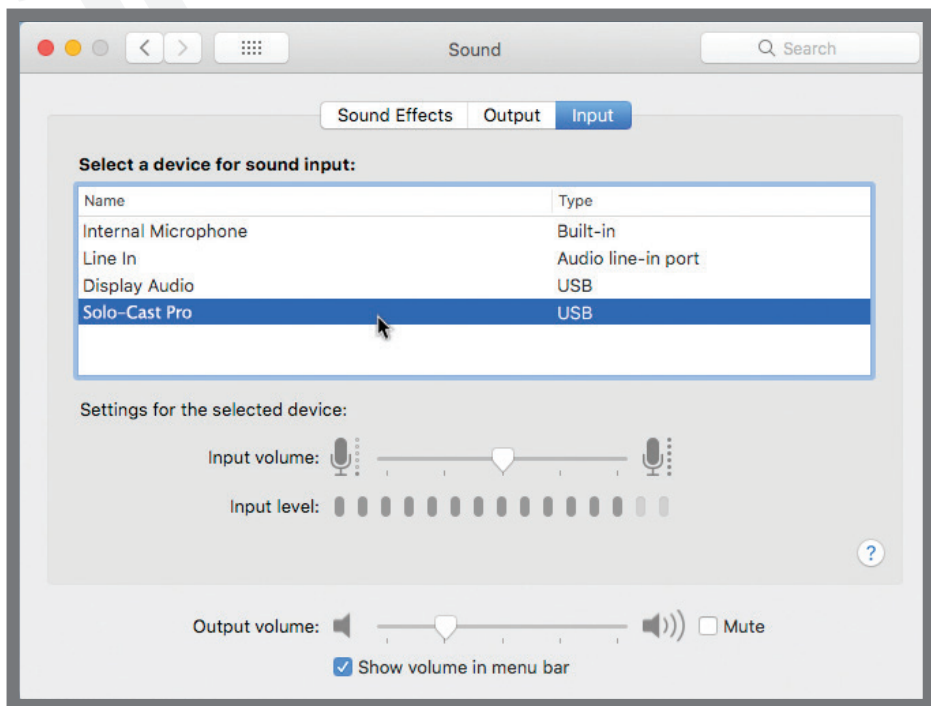


2. In the SYSTEM PREFERENCES menu click on the speaker icon labeled SOUND.

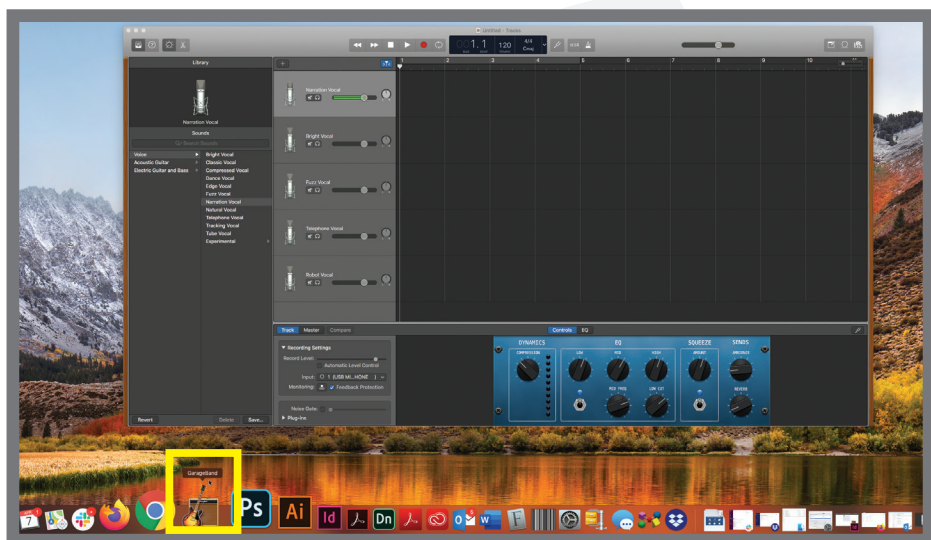


Operation

2. In the SOUND menu click on the INPUT tab. Select Solo-Cast or Solo-Cast Pro as your input device. Now you can adjust the input volume and check the input level.



10. Now launch your DAW software. Refer to the software's instruction manual for directions on using external input devices.



Features and Specifications

Solo-Cast

- Perfect for Podcasting, Streaming, recording, and more
- High rate AD/DA conversion technology
- Sampling rate: 24Bit/192kHz
- Gain knob controls the overall volume/sensitivity
- High quality capsule provides smooth and clear sound
- No distortion on microphone or headphone sound
- Low power consumption
- No drivers needed
- Compatible with Windows 7 or later/MAC OSX 10.9 or later
- No driver downloads required
- Element: High quality condenser capsule
- Polar Pattern: Uni-directional
- Frequency Response: 30Hz – 18kHz
- Sensitivity: -36dB (0dB = 1V/Pa @ 1kHz)
- Max. Input SPL: 130dB (@ 1kHz 1% T.H.D)
- Bit Depth: 24Bit
- ADC: 8, 11.025, 16, 22.05, 32, 44.1, 48kHz
- DAC: 32, 44.1, 48kHz
- THD+N = 0.5%
- SNR = 89dB
- Dynamic Range: 89dB
- Stereo output power: 105mW

Solo-Cast Pro

- Perfect for Podcasting, Streaming, recording, and more
- High rate AD/DA conversion technology
- Sampling rate: 24Bit/192kHz.
- 1/8" headphone out with zero delay monitoring.
- High quality capsule provides smooth and clear sound
- Gain knob controls the overall volume/sensitivity
- Mute button
- Built-in headphone jack with built in headphone amplification and zero latency
- No distortion on microphone or headphone sound
- Low power consumption
- No drivers needed
- Compatible with Windows 7 and later or MAC OSX 10.9 and later (No driver downloads required)
- Element: High quality condenser capsule
- Polar Pattern: Uni-directional
- Frequency Response: 30Hz – 18kHz
- Sensitivity: -36dB (0dB = 1V/Pa @ 1kHz)

Features and Specifications

- Max. Input SPL: 130dB (@ 1kHz 1% T.H.D)
- Bit Depth: 24Bit
- ADC: 8, 11.025, 16, 22.05, 32, 44.1, 48kHz
- DAC: 32, 44.1, 48kHz
- THD + N = 0.05%
- S/N Ratio: 96dB
- Dynamic Range: 93dB
- Stereo output power: 105mW

Troubleshooting

PROBLEM

SOLUTION

| | |
|------------|---|
| No Sound | <ol style="list-style-type: none">1. Make sure the microphone is on.2. Check that the mic volume is properly set.3. Check all connections to ensure everything is properly connected.4. Check the computer's volume settings.5. Check the computers' input settings (see page 5 for Windows OS and page 8 for Mac OS X).6. Make sure the Solo-Cast microphone is selected as your audio source within your DAW as well as your input selection on the recording channel in your DAW. |
| Distortion | <ol style="list-style-type: none">1. Gains not set properly.2. Mixer input sensitivity is too high. |
| Dull Sound | <ol style="list-style-type: none">1. Clean internal and external windscreens. |

רשתות

Visit us at:

RockvilleAudio.com

Due to constant improvements, these specifications are subject to
change without notice.

Copyright 2020