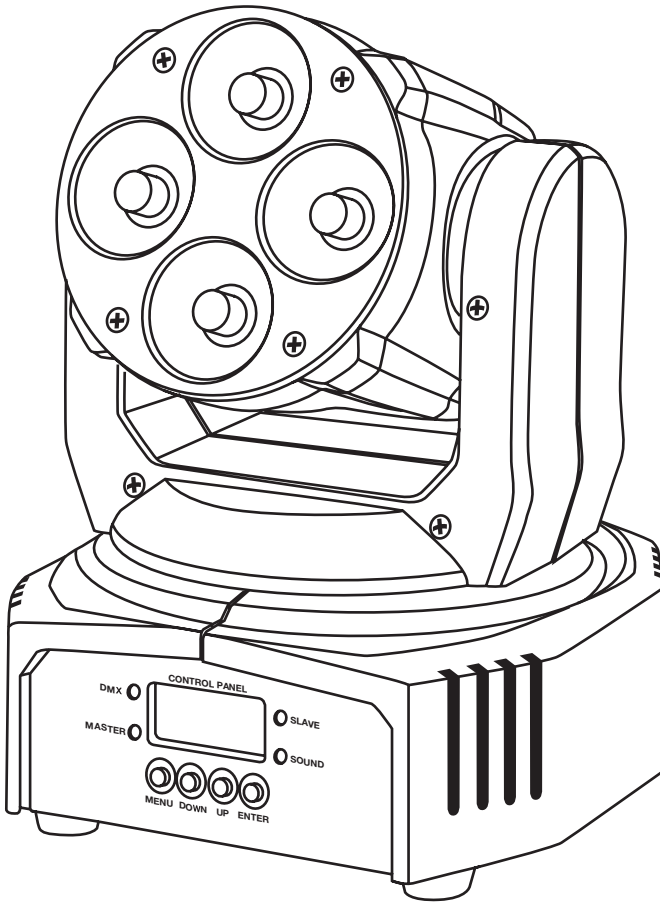


ROCKVILLE



OWNER'S MANUAL

RockOn-7

MINI 4x10W RGBW LED MOVING HEAD LIGHT

Thank you for purchasing this Rockville RockOn-7 Mini 4x10W RGBW LED Moving Head light. We are proud to introduce our first member of the RockOn series of lights! The RockOn-7 is an IP20 rated intelligent moving head light with 16 channels of professional DMX control. This Moving head is super versatile allowing you to control every facet of the light. With the RockOn-7 you can create spectacular aerial light shows using extremely fast pan and tilt speeds. We made these lights to be easy to use for experts and for beginners.

Please read this installation guide carefully for proper use of your Rockville RockOn-7 Mini 4x10W RGBW LED Moving Head light. Should you need technical assistance please call our technical help line at 1-646-758-0144, Monday through Friday, 9am to 5pm EST.

INCLUDES

- Moving head light
- Full function remote control
- Power wire
- DMX cable
- Mounting bracket
- Owners manual
- Warranty card

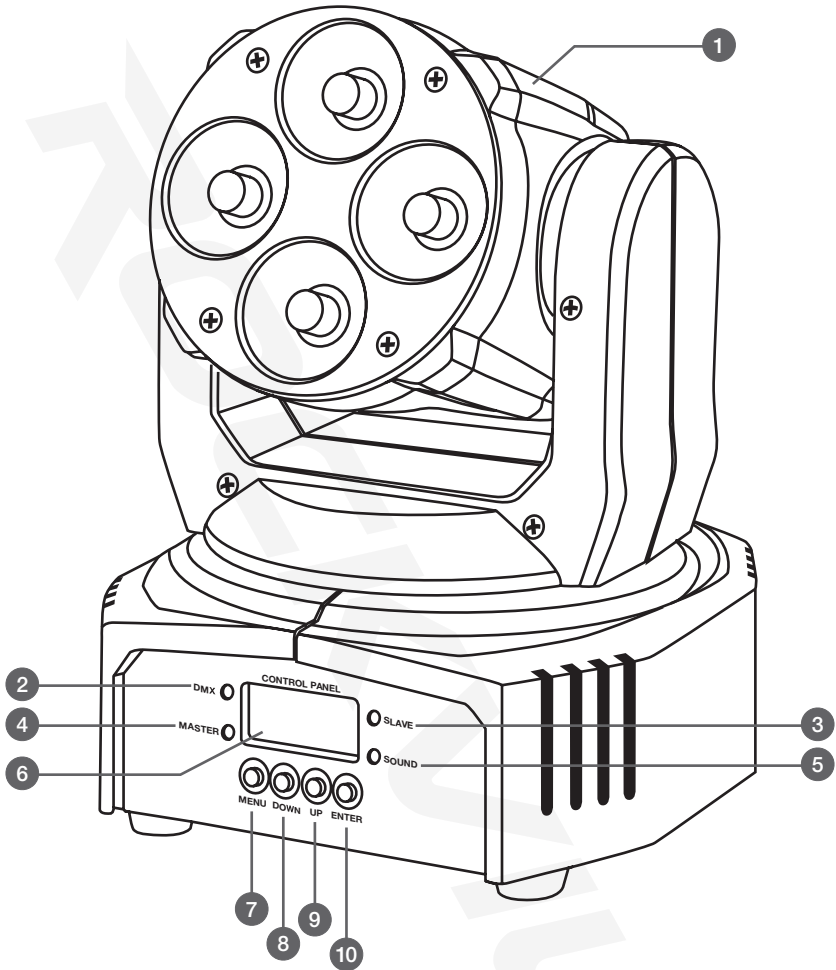
IMPORTANT SAFETY INSTRUCTIONS



NO USER SERVICEABLE PARTS INSIDE. WE RECOMMEND TAKING THE UNIT TO A QUALIFIED SERVICE TECHNICIAN FOR ANY REPAIRS.

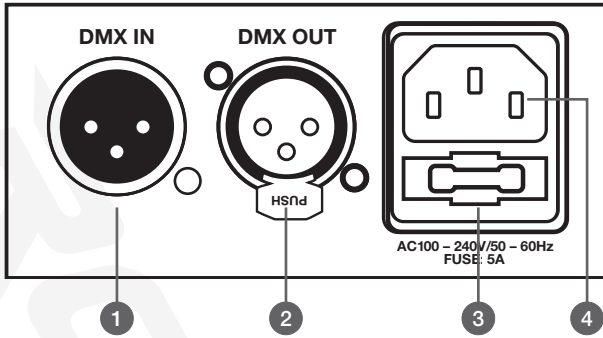
- To reduce risk of electric shock, never open the unit. There are no user serviceable parts, refer service to an authorized Rockville service center.
- Avoid looking directly into the lights.
- Do not expose this unit to any kind of moisture.
- The products housing may become hot during operation. Do not touch.
- Please ensure that the unit is situated in a properly ventilated area. Allow at least 20 inches between this device and a wall.
- This device has an IP20 rating and is intended for indoor use only.
- Maximum operating temperature is 104°F (40°C).
- Do not operate this unit when the cover is open.
- Do not attempt to operate this unit if the power cord has been frayed or broken.
- Do not attempt to break off or remove the ground prong. This prong is used to reduce the risk of electrical shock and fire in case of an internal short.
- Never plug this unit into a dimmer pack.
- Do not operate this unit if it is damaged.
- This unit is intended for indoor use only.
- During long periods of non-use, disconnect the unit from power source.
- Always mount this unit in a safe and stable matter.
- Power supply cords should be routed so that they are not likely to be walked on or pinched by items placed upon or against them, paying particular attention to the point of exit from the unit.
- To avoid unnecessary wear and to improve the unit's lifespan, unplug the unit when not in use for extended periods of time.

FUNCTIONS Front



1. Yoke: Multi-directional swivel head
2. DMX mode LED indicator
3. SLAVE mode LED indicator
4. MASTER mode LED indicator
5. SOUND mode LED indicator
6. LCD display shows unit status
7. Menu: Enter menu mode
8. Up: Scroll up through menu items
9. Down: Scroll down through menu items
10. Enter: Confirm selection

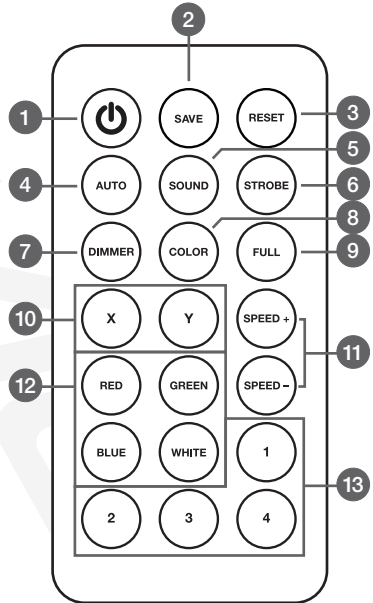
FUNCTIONS Rear



1. DMX In
2. DMX Out
3. Fuse
4. IEC AC Power socket

REMOTE CONTROL

1. Off/On
2. Save: Save last used settings.
3. Reset: Reset unit to factory settings.
4. Auto: Set unit to automatic mode.
5. Sound Activate: Activates sound mode. In sound mode, the fixture will begin lightshow when music or sound is on. When there is no sound or music, the lightshow will stop.
6. Strobe: Turns on strobe mode. Use the SPEED +/SPEED - buttons to adjust strobing speed.
7. Dimming: Activates dimming feature. Use SPEED+/SPEED- buttons to adjust brightness.
8. Color Changing: Cycle through the colors automatically. Use the SPEED+/SPEED- to adjust cycling rate.
9. Full color: 4 colors are on.
10. X: Adjusts the X-axis (press X button, then press Speed (+)/Speed (-) to adjust.)
Y: Adjusts the Y-axis (press Y button, then press Speed (+)/Speed (-) to adjust.)
11. Speed (+): Up/Add. Adjust dimming, strobe, X, Y and color cycling.
Speed (-): down/subtract. Adjust dimming, strobe and color cycling.
12. Red: Red color.
Green: Green color.
Blue: Blue color.
White: White color.
13. 1-4 buttons: Used to activate one of 4 built-in light shows



REMOTE CONTROL

To use the remote control:

1. Hang all the fixtures.
2. Connect all fixtures via the DMX IN/DMX OUT ports.
3. Connect to power source and turn-on all fixtures.
4. Adjust as DMX mode (d001) on the panel display.

MULTI FIXTURE USE (Master/Slave + remote control mode).

To use the remote control:

1. Hang all the fixtures.
2. Connect all fixtures via the DMX IN/DMX OUT ports.
3. Connect to power source and turn-on all fixtures.
4. Adjust as DMX mode (d001) on the panel display.
5. Choose one fixture as the main fixture by pointing the remote at it and pressing any button. Once the main fixture is chosen, all other fixtures become slaves. Control the fixtures by pointing the remote at the main fixture to activate features.
6. Once you have set the main fixture, this fixture will always be the main fixture for future use. To choose another fixture as the master, press the reset button on the remote, and change the DMX mode to d001 on the current master fixture. Then repeat step 5 to set the desired fixture as the master.

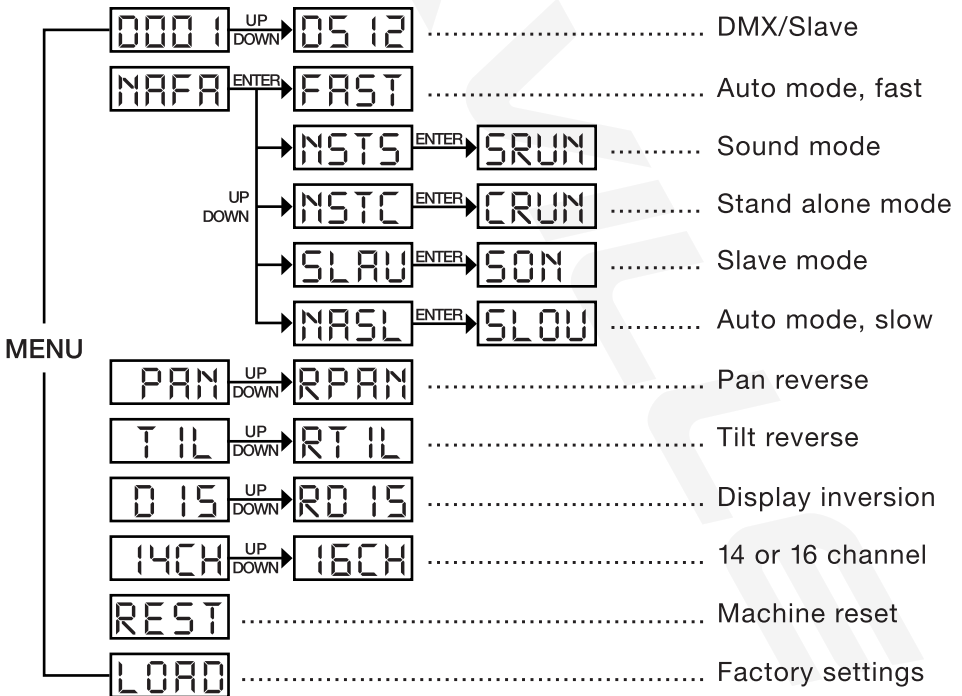
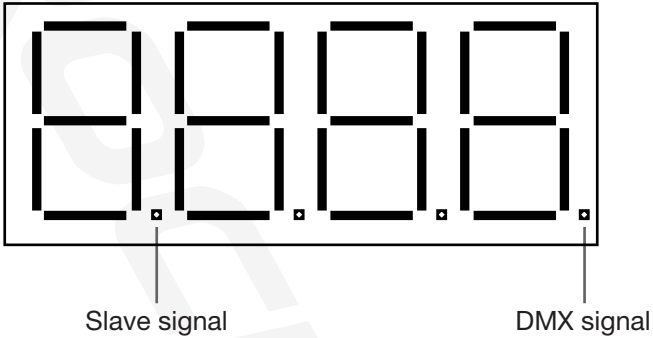
PLEASE NOTE:

1. Do not connect the controller when using the remote control.
2. Press the reset button, x button, or Y button to stop the fixture when it is in Sound, Automatic, or built-in light show modes.
3. Be sure to keep the front of the master fixture free and clear of any obstructions as they may affect the remote control performance.
4. When you press the Save button on the remote, please ensure that the display panel flashes as this indicates that the current status has been saved.

OPERATION

Use the MENU button to enter the settings menu. Use the UP and DOWN buttons to select the desired setting and set their values. Press ENTER button to save your selection. Please note that the unit can automatically identify DMX mode and Master/Slave mode.

DISPLAY



DMX

The first time you use the console to control the fixtures, they need to be set to synchronous state.

1. Connect the DMX IN, DMX OUT, and power cord.
2. Please set the value of the synchronous channel (CH10 in 14 channel mode/ CH12 in 16 channel mode) to 16 – 128, then wait for 1 to 2 seconds.
3. Set the value back to 0 and wait another 1 – 2 seconds. Now all the fixtures will be in synchronous mode.
4. If you add more fixtures, repeat the steps above.

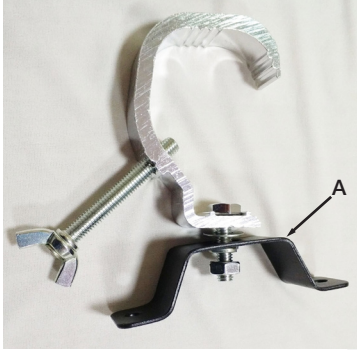
14 Channel

Channel	Value	Function
CH1	0 – 255	Pan
CH2	0 – 255	Tilt
CH3	0 – 255	X/Y speed
CH4	0 – 255	Dimmer
CH5	0 – 255	Strobe speed
CH6	0 – 255	Red dimmer
CH7	0 – 255	Green dimmer
CH8	0 – 255	Blue dimmer
CH9	0 – 255	White dimmer
CH10	0 – 15	No effects
	16 – 128	Automatic motor movement
	129 – 255	Sound activated motor movement
CH11	0 – 255	Automatic motor speed adjust
CH12	0 – 140	Automatic color change
	141 – 255	Sound activated color change
CH13	0 – 255	Automatic color change speed adjust
CH14	250 – 255 (5 minutes)	Reset

Channel	Value	Function
CH1	0 – 255	Pan
CH2	0 – 255	Pan fine
CH3	0 – 255	Tilt
CH4	0 – 255	Tilt fine
CH5	0 – 255	XY speed
CH6	0 – 7	Dimmer
CH7	8 – 134	Strobe speed
CH8	135 – 239	Red dimmer
CH9	240 – 255	Green dimmer
CH10	0 – 255	Blue dimmer
CH11	0 – 255	White dimmer
CH12	0 – 15	No effects
	16 – 128	Automatic motor movement
	129 – 255	Sound activated motor movement
CH13	0 – 255	Automatic motor speed adjust
CH14	0 – 140	Automatic color change
	141 – 255	Sound activated color change
CH15	0 – 255	Automatic color change speed adjust
CH16	250 – 255 (5 minutes)	Reset

INSTALLATION

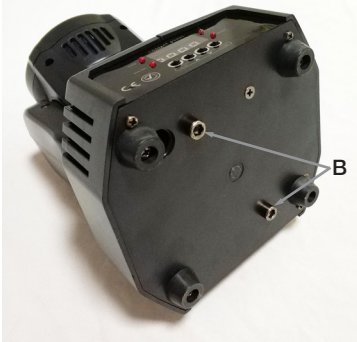
Please follow the directions below for safely hanging the RockOn7 on a truss. You will need a 5mm allen wrench, an adjustable wrench, and pliers. Please use a safety cable when hanging the fixture. This will prevent any injuries in the event that the fixture falls.



STEP 1

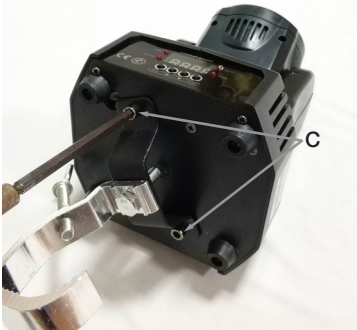
Slide the black mounting bracket (A) onto your mounting clamp.

****PLEASE NOTE: Your mounting clamp may differ from the one used in our installation instructions. Make sure to refer to your clamp's specific mounting instructions for proper use.**



STEP 2

Remove the two allen head bolts at the bottom of the unit (B).



STEP 3

Attach the bracket to the bottom of the unit using the allen bolts you removed in step 3 (C).



STEP 4

Attach the clamp to the truss. Adjust the direction (D) as needed. Next, tighten both allen bolts (E).

FEATURES

- Includes a full function remote for easy programming
- Emits bright, long-throw effects with tight, concentrated beam angles
- Uses 25° lens for bigger washing range
- DMX 512 controls (14 or 16 channels)
- Create spectacular aerial light shows using extremely fast pan and tilt speeds
- Strong power arm for fast and precise movement
- Strobe effect with adjustable speed
- Features include strobe, color change, color fade, dimmer, ID address, and color mixing controls
- Project light where you want it with user-selectable pan and tilt ranges
- Increase effects with electronic linear dimming and strobe features
- Continuous shows with reset of pan/tilt, color, and prism
- Master/Slave capabilities so you can run the same program on multiple lights
- Built-in, sound-activated programs dance to the beat of the music
- Constant current feature helps ensure LED longevity
- An IP20 rating makes this unit rugged and tough
- Hanging bracket included
- Suitable for DJs, discos, ballrooms, karaoke, stage productions, bars, clubs, and parties.

SPECIFICATIONS

Rated Power Consumption: 60W

Light Source: 4 x 10W 4-in-1 (RGBW) LEDs

Lighting Color: Red, blue, green, and white

LED Life Expectancy: 60,000Hrs

Control Mode: Automatic/Sound/DMX512/master and slave

Dimming: 0-100% linear dimming

DMX Channels: 14 or 16

Light Connectors: 3-pin

Pan/Tilt: 540°/270°

Colors: 3 + white, color gradient function, continuous scroll at variable speeds

Strobe Rate: 0 - 25Hz

Beam Angle: 25°

Illuminance: 1160 lux @ 3m

Input Voltage: Auto-ranging AC 110 – 240V/50 – 60Hz

IP Rating: IP20

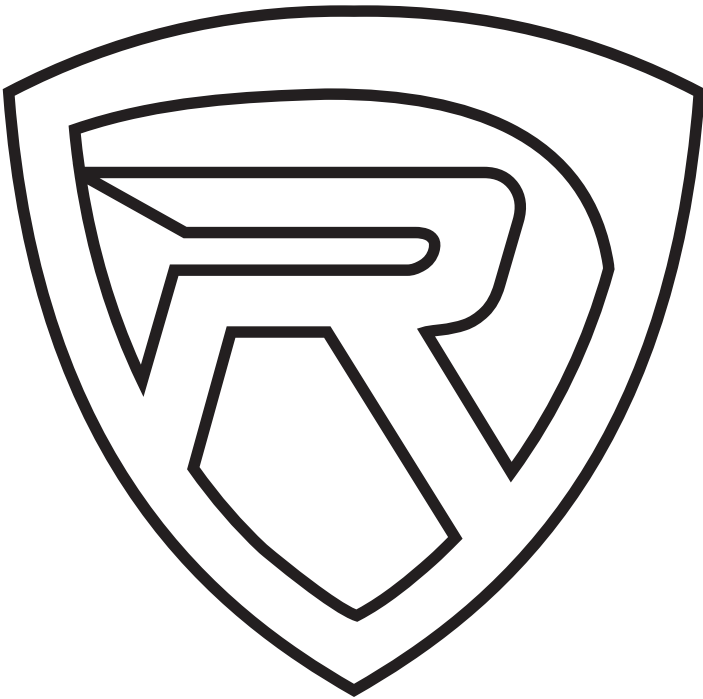
Unit Weight: 4.4 Lbs (2Kg)

Size: 9.1 x 6.3 x 7.8in (230 x 160 x 200mm)

TROUBLESHOOTING

PROBLEM	
No Power	<ol style="list-style-type: none">1. Make sure the unit is properly plugged in and that the power outlet is functioning properly.2. Check that the power cord is not damaged.
No fixture DMX response	<ol style="list-style-type: none">1. Make sure that the starting address at the fixture is correct.2. Make sure you are using the correct faders on the controller.3. Make sure you are using the correct fixture template and assign controller faders accordingly.4. Change the signal polarity at the controller.5. Check your DMX cables to ensure they are not improperly connected or damaged.
Intermittent DMX problems	<ol style="list-style-type: none">1. Make sure the cables you are using are DMX compatible. Use true DMX cables.2. Keep DMX cables away from any AC wires or radio equipment.3. Install a terminator.4. If you are running a long DMX cable or have a large number of units connected, use an optically coupled DMX amplifier.

ROCKVILLE



RockvilleAudio.com

© 2019 ROCKVILLE // Features and specifications are subject to change and or improvement without notice.