

# ROCKVILLE

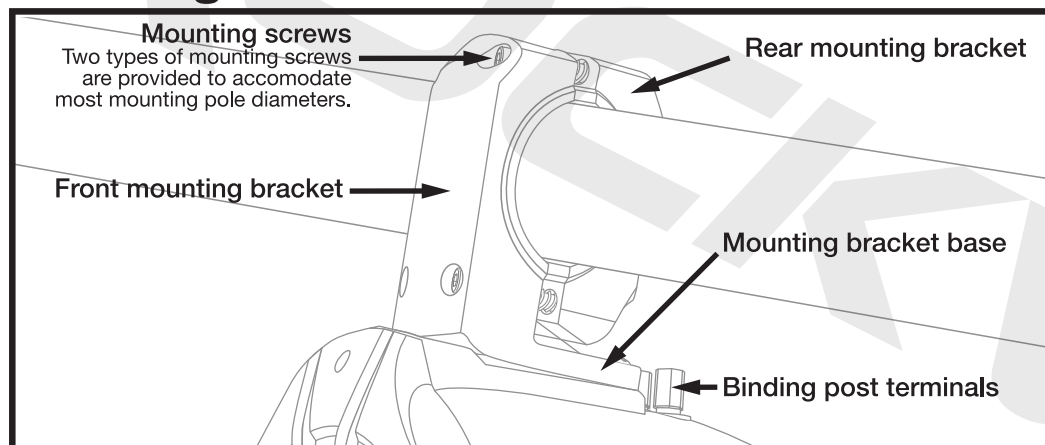
## RWB65/RWB80

Thank you for purchasing these Rockville RWB Series 2-Way Wakeboard Tower Speakers. Please read this guide carefully for proper installation of your RWB Series Speakers. Should you need technical assistance please call our technical help line at 1-646-758-0144, Monday through Thursday, 9am to 10pm EST., and Fridays, 9am to 3pm EST.

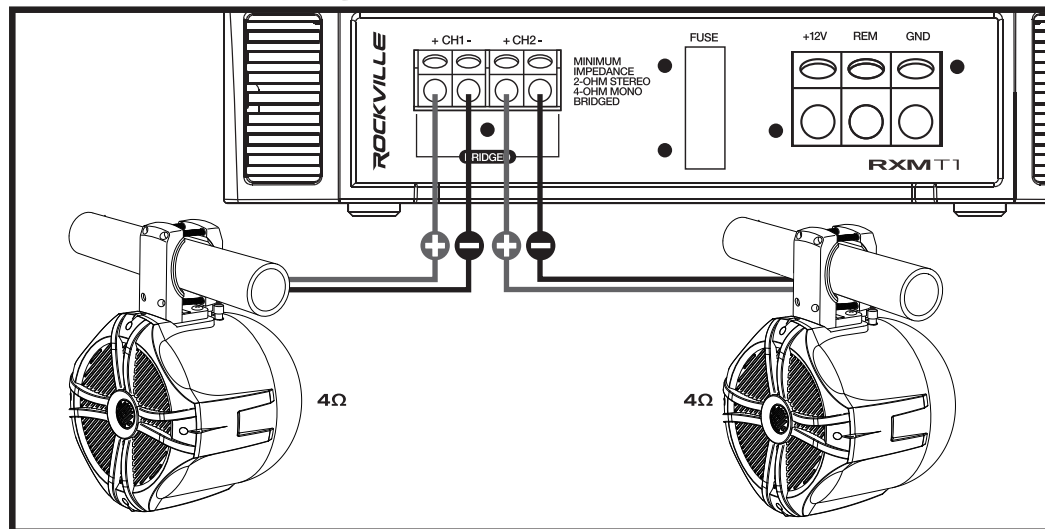


Go to [vimeo.com/222473581](https://vimeo.com/222473581) or scan the QR code and watch a short video, which shows you how to set this item up and how to use it.

## Mounting Bracket

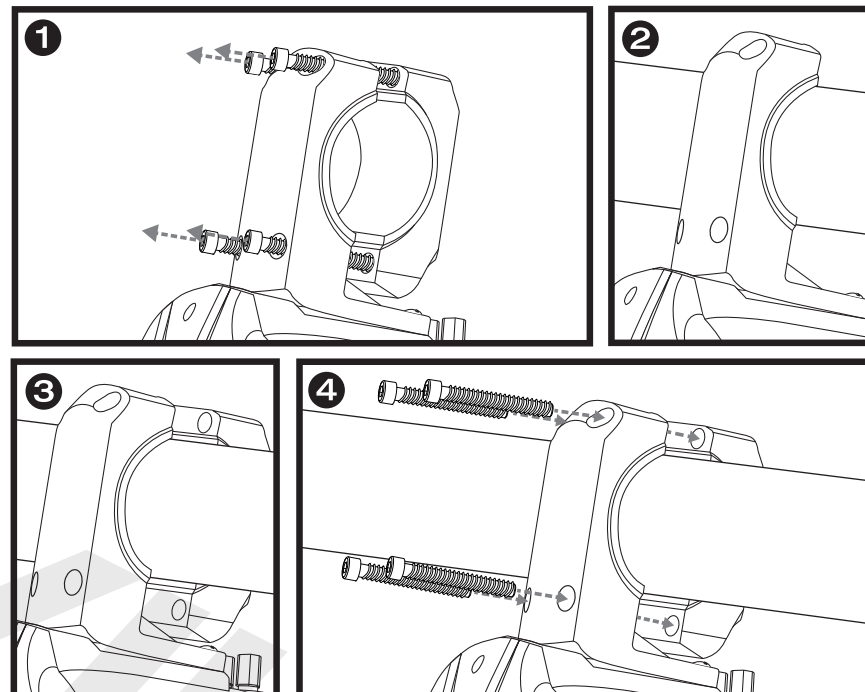


## Speaker Configuration



## Mounting Instructions

1. Release the rear clamp piece by using an allen wrench to remove the screws.
2. Place front clamp piece snug against cross bar.
3. Place rear clamp piece on the other side of the crossbar.
4. Insert and tighten screws ensuring a tight, snug fit.



**WARNING:** MAKE SURE THAT THE POSITIVE (+) AND NEGATIVE (-) SPEAKER WIRES ARE CONNECTED TO THE CORRESPONDING TERMINALS ON THE AMPLIFIER.

- Most speaker damage is caused by amplifiers with too much power (wattage).
- The proper way to set your gain is to turn your receiver volume to 75% of the max, and then slowly turn your gain up. The second you hear any slight distortion, turn it down one notch and leave it at that setting. Amps are not meant to be played with the gain up to the max. If this is the case, lower your gain slowly until you hear the amplifier stop clipping.