

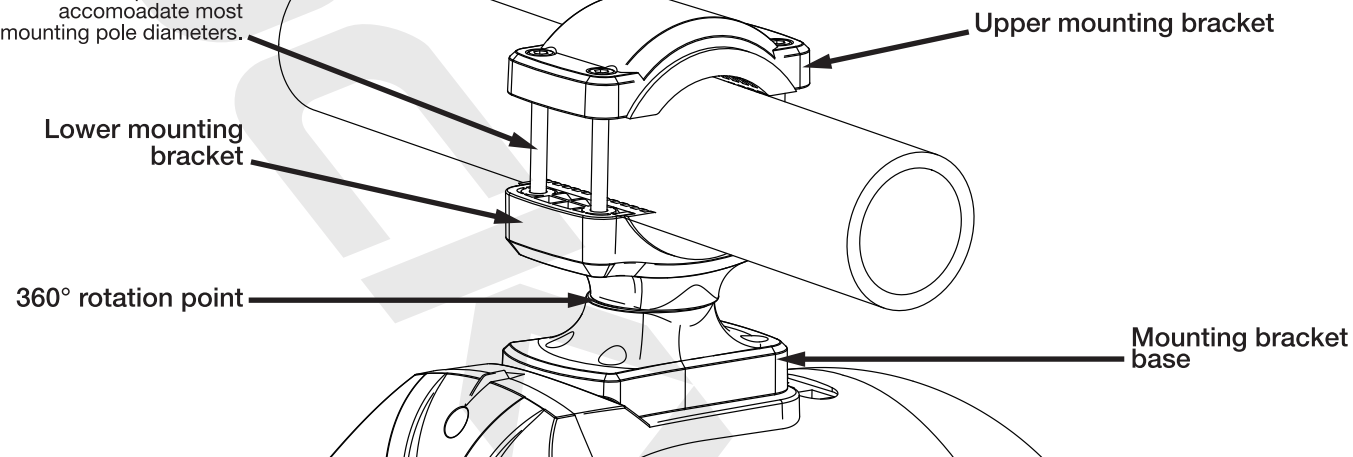


## RWB70/RWB90

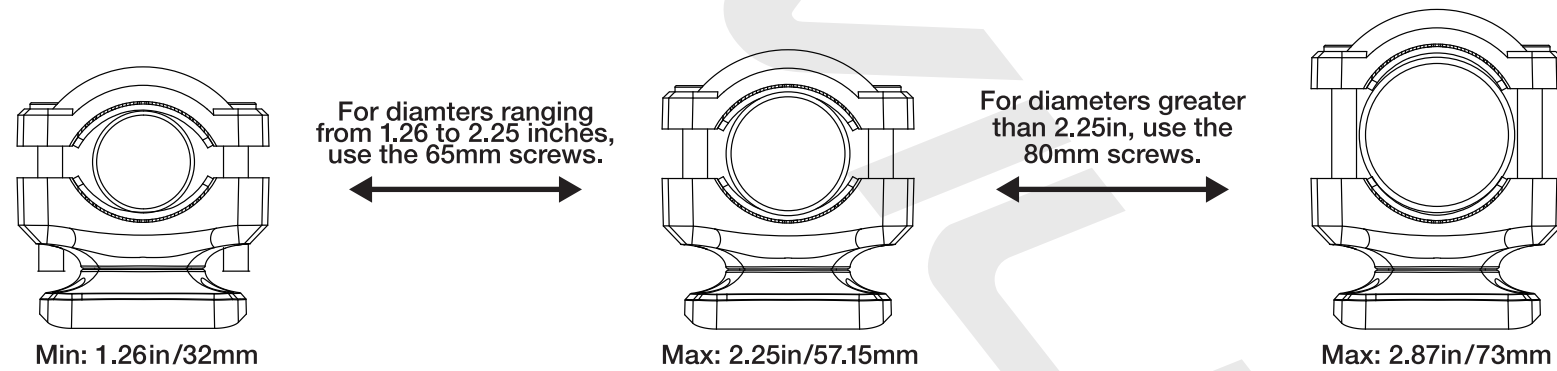
Thank you for purchasing these Rockville RWB Series 2-Way Wakeboard Tower Speakers w/360° Swivel Bracket. Please read this guide carefully for proper installation of your RWB Series Speakers. Should you need technical assistance please call our technical help line at 1-646-758-0144, Monday through Friday, 9am to 5pm EST.

### Mounting Bracket

**Mounting screws**  
Two types of mounting screws are provided to accomodate most mounting pole diameters.

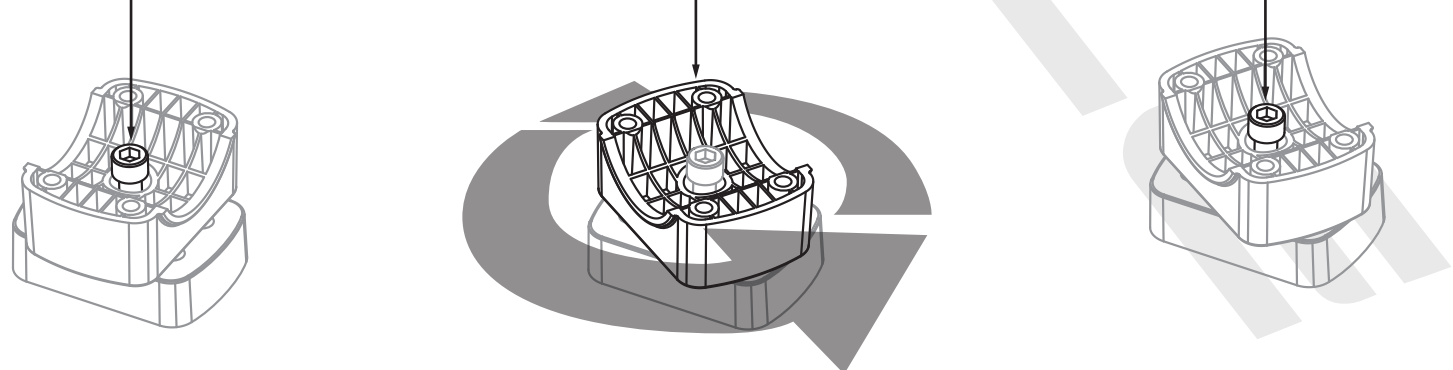


We include 65mm and 80mm screws which allow the bracket to expand from 1.26in to 2.87in to fit a variety of wakeboard tower tube diameters.

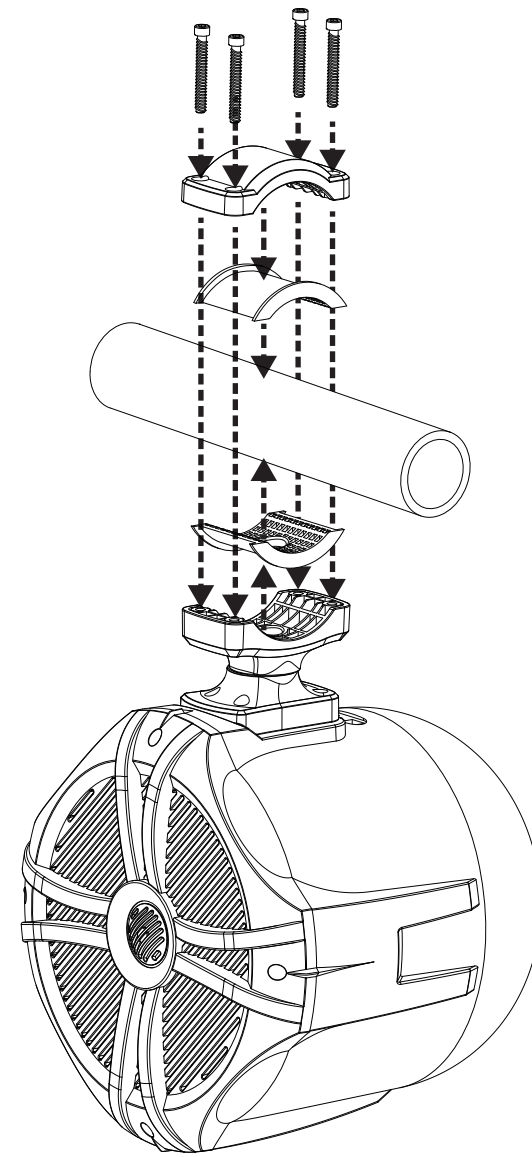


### 360° Rotation Function

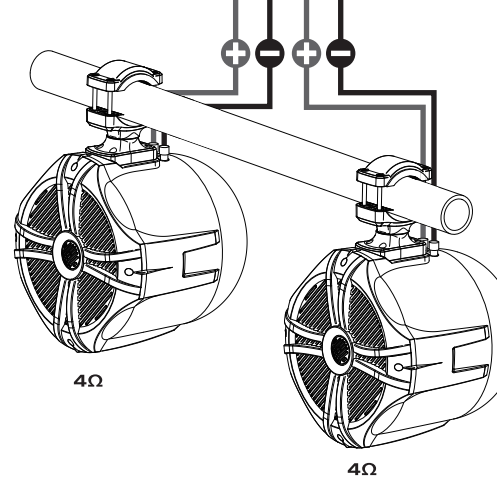
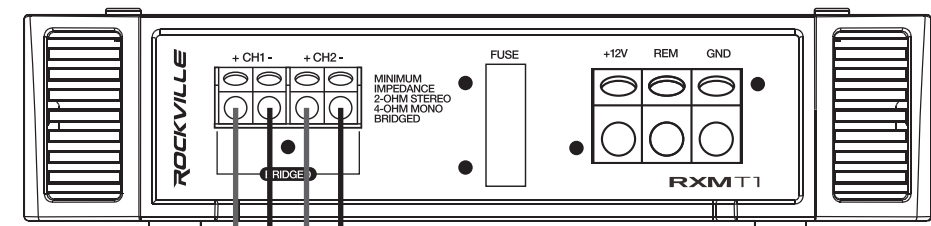
1. Loosen the rotation adjustment screw.
2. Rotate the lower mounting bracket to the desired position.
3. Lock the rotation adjustment screw.



### Assembly



### Speaker Configuration



**WARNING**

MAKE SURE THAT THE POSITIVE (+) AND NEGATIVE (-) SPEAKER WIRES ARE CONNECTED TO THE CORRESPONDING TERMINAL ON THE AMP.

- Most speaker damage is caused by amplifiers with too much power (wattage).
- The proper way to set your gain is to turn your receiver volume to 75% of the max, and then slowly turn your gain up. The second you hear any slight distortion, turn it down one notch and leave it at that setting. Amps are not meant to be played with the gain up to the max. If this is the case, lower your gain slowly until you hear the amplifier stop clipping.