

# ROCKVILLE

## RHT8 Assembly Instructions

Thank you for purchasing these RHT8 Wood Speaker Stands. Please read these instructions carefully before use. Make sure all parts are included. If any parts are missing please contact our technical help line at 1-646-758-0144, 24 hours a day/7 days a week. Scan the QR codes or go to URLS to access how-to video(s), the owner's manual, and other important information you may need to get the most out of your item.



rockvillesupport.com/rht8b



rockvillesupport.com/rht8c



rockvillesupport.com/rht8d



rockvillesupport.com/rht8g

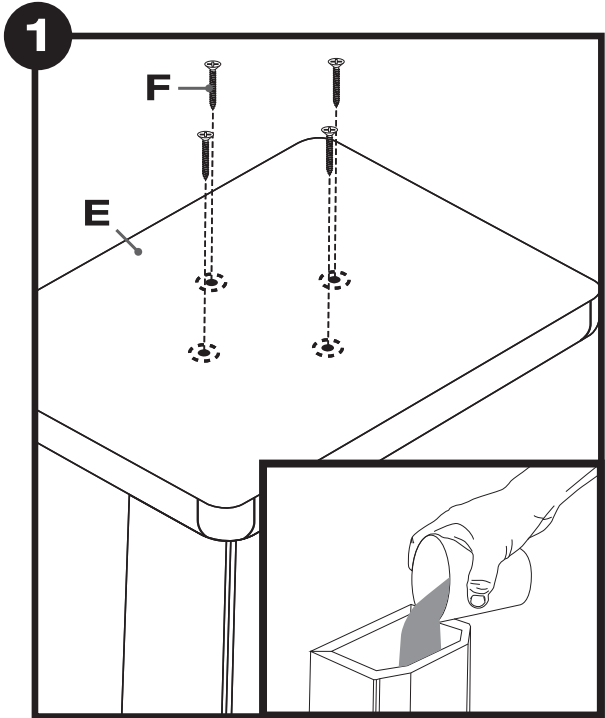
base plate		2 pcs.
top platform		2 pcs.
Stand body		2 pcs.
EVA isolation pads		8 pcs.
Phillips-head screws		16 pcs.
cable clips		4 pcs.
zip ties		4 pcs.

### Specifications

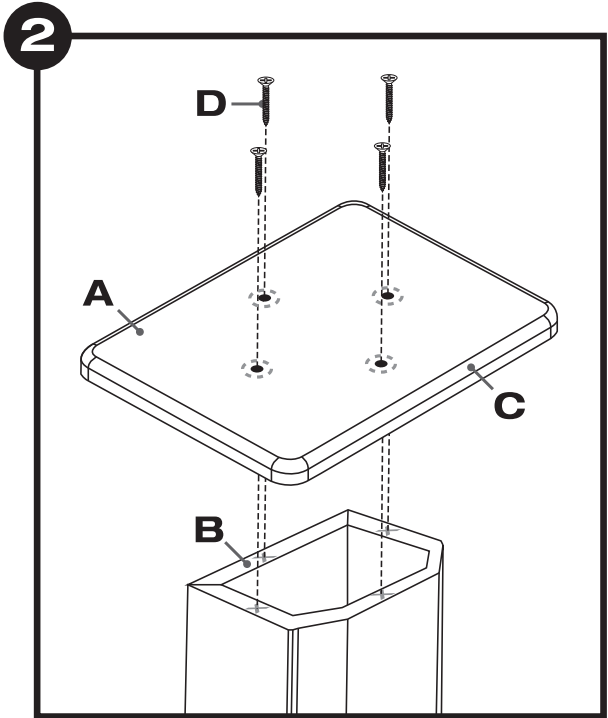
- Stand height: 8"
- Load capacity: 66 lbs
- Top platform size: 7.28" x 9.25"
- Base plate: 11.8" x 9"
- Stand weight: 10 lbs

### Tools needed:

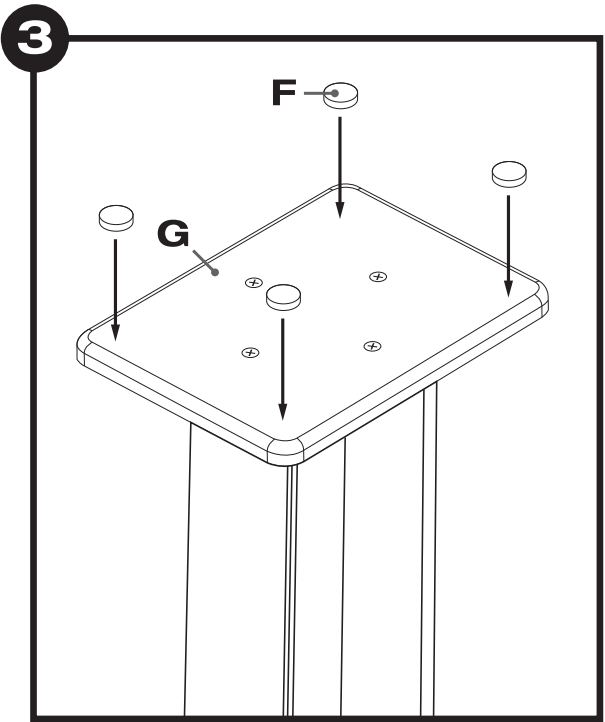
- Phillips-head screwdriver



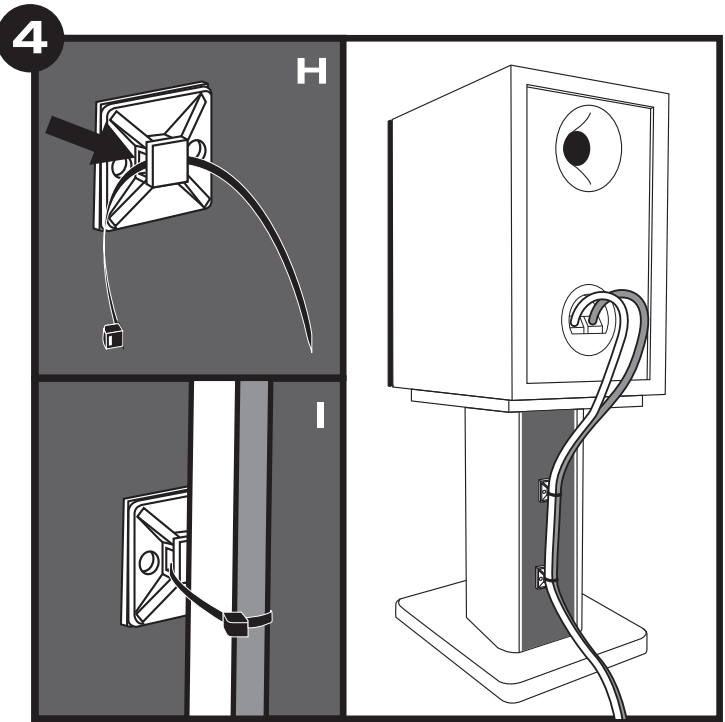
Attach the base plate (E; flat side up) by aligning the screw holes with the stand body as in figure 1. Use four screws (F) to secure it in place. After attaching the plate you may consider partially filling the stand body with sand for additional stability (see inset).



Select the appropriate size platform (A; there are two included). Align the holes on the platform with the edges of the stand body (B). Make sure that the beveled side of the platform (C) is facing up. Use four screws (D) to secure it in place.



Peel back the cover on the adhesive side of the EVA sound isolation pads (F) and place one on each corner of the top plate (G). These pads help to minimize resonance.



The final step is to attach the cable clips to the back of the unit. Peel the cover off of the adhesive backing and place the clips in the desired locations. Once the clips are in place, slide a zip tie through the opening on the side of the clip (see inset H). Use the zip tie to secure the speaker cables (see inset I).