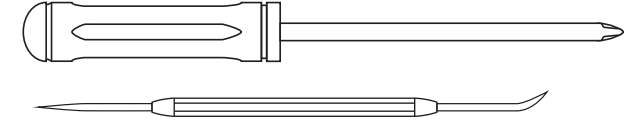


Please read these instructions carefully for proper replacement of your RAM-BT's battery. **Be sure to disconnect power to the unit before beginning this procedure.** If you need assistance please contact our technical help line at 1-646-758-0144, Monday through Friday, 9am to 5pm EST. You can also watch our informational video on YouTube: <https://www.youtube.com/watch?v=n3cS4rKAE-Y&feature=youtu.be>

Tools Needed: Screwdriver and a Pick tool (if you dont have a pick, a butter knife or flat head crew driver will do).



1 Removing the Cover



Remove the 4 screws that hold the battery cover in place using a Phillips head screwdriver. **MAKE SURE THE UNIT IS UNPLUGGED BEFORE REMOVING THE SCREWS.**

2



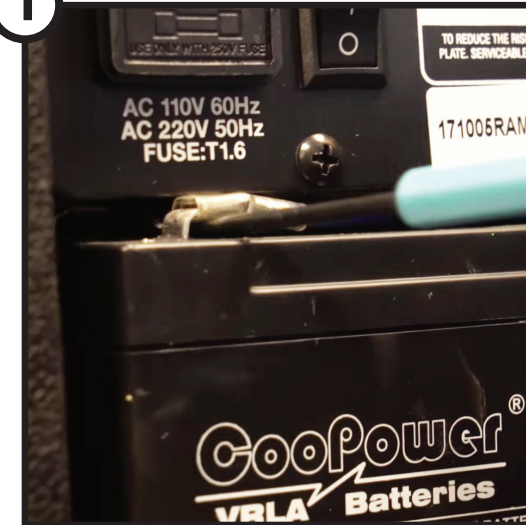
Use the pick tool (you can also use a flat head screwdriver or a butter knife) to carefully pull the bottom of the battery cover.

3



Once the bottom of the cover is out, gently pull down and away. Set the cover aside.

1 Removing the Battery



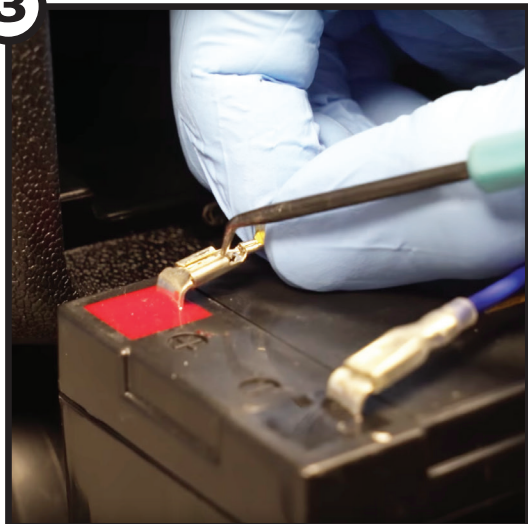
Using the pick tool (you can also use a flat head screwdriver or a butter knife), gently hook into the negative terminal of the battery.

2



Slowly and carefully pull the battery out.

3



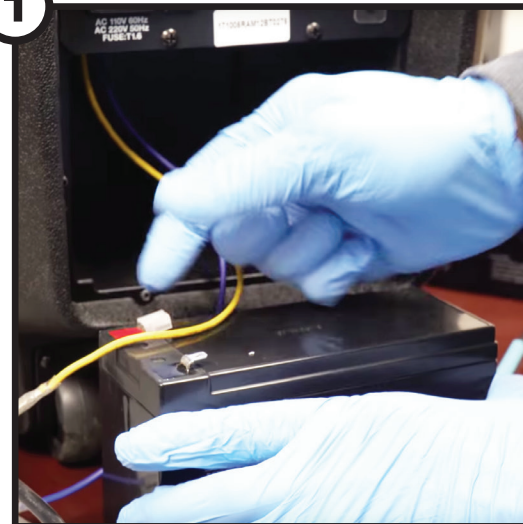
Use the pick tool to release the **YELLOW** positive (+) cable from the terminal. Simply push down on the small tab (shown above) and pull the cable.

4



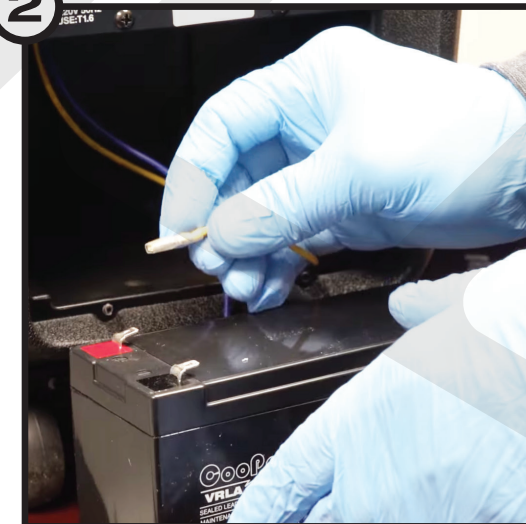
To remove the **BLUE** negative (-) cable, gently pull it away from the terminal.

1 Replacing the Battery



Remove the plastic terminal covers on the new battery.

2



Reconnect the **YELLOW** positive (+) cable to the red positive (+) terminal of the new battery.

3



Reconnect the **BLUE** negative (-) cable to the black negative (-) terminal of the new battery.

4 Removing the Cover



Before re-inserting the battery, perform a quick power-on test to ensure everything is correctly connected. If everything is in proper working order, proceed to the next step. Otherwise, please repeat the steps in the "Replacing the Battery" section of this instruction sheet. **MAKE SURE TO UNPLUG THE UNIT BEFORE PROCEEDING.**

5



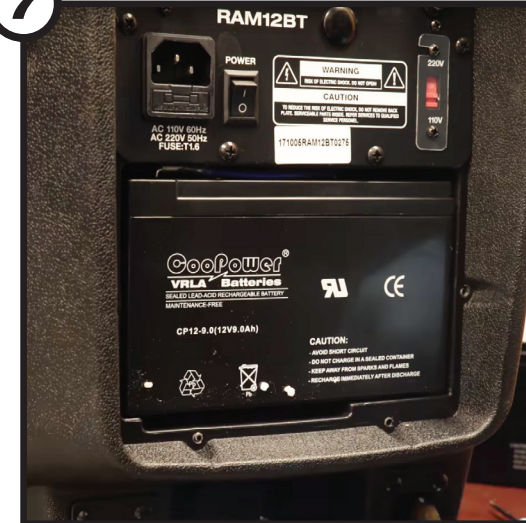
Carefully tuck the wires into the battery compartment before re-inserting the battery.

6



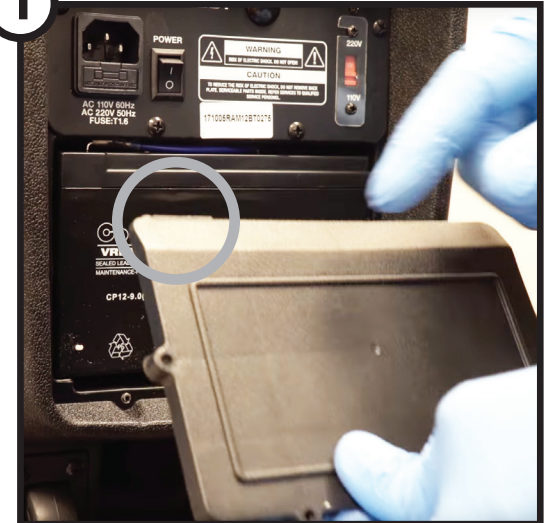
Gently insert the battery into the compartment being careful not to pinch the cables.

7



The battery is properly seated once it is flush with the outer edge of the battery compartment as shown in the image above.

1 Replacing the Cover



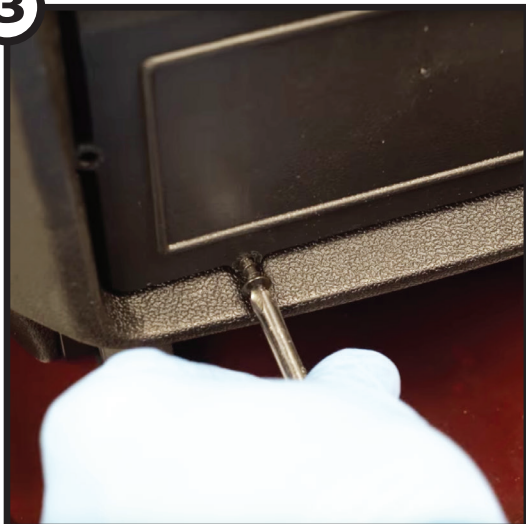
Replace the back plate by inserting the top of the plate first, ensuring that the plastic tabs (circled in the image above) slide into the corresponding slots located below the bottom of the amp plate.

2



Once the tabs are in place, gently press the bottom of the back plate ensuring that it is properly seated.

3



Take the four screws and tightly fasten them in so the back plate is secure. Do not over tighten.

4



Now check that the unit powers up. If it does then you have successfully replaced the battery on your RAM-BT unit. If you are unable to power up, please review this instruction sheet to make sure you did not miss any steps. If problems persist, please contact us at 1-646-758-0144 Monday to Friday, 9am to 5pm EST for further assistance.