

ROCKVILLE

RPG152K V2
15" ACTIVE DJ/PA SPEAKERS

OWNER'S MANUAL

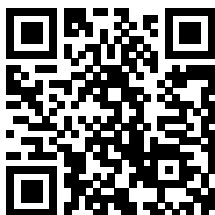
ATTENTION:
VISIT THE ROCKVILLE SUPPORT SITE FIRST!

Who reads manuals?

Scan the **QR code** or go to **rockvillesupport.com/rpg152k-v2** to access how-to video(s), the owner's manual, and other important information you may need to get the most out of your item.

If you prefer written instructions, please read ahead!

With Rockville you get many options.



Missing items? If you ordered a bundle that includes more than one product and you are missing part of your bundle then it just means your order shipped from two different warehouses. You will receive the remaining items very soon. If you have any concerns or inquiries, feel free to call our customer support center at 1-646-758-0144, 24hours a day/7 days a week.

Rockwell

Thank you for purchasing this Rockville Power Gig RPG152K V2 Bluetooth pro audio speaker system. Please read this owner's manual carefully for proper use of your RPG152K V2 speaker. Should you need assistance, please call our technical help line at 1-646-758-0144, 24 hours a day/7 days a week.

IMPORTANT SAFETY INSTRUCTIONS

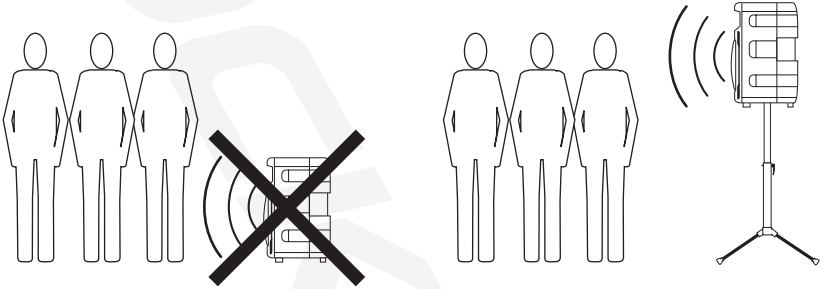


- To reduce risk of electric shock, never open the unit. There are no user-serviceable parts. Refer service to an authorized Rockville service center.
- Do not expose this unit to any kind of moisture.
- Please ensure that the unit is situated in a properly ventilated area.
- Make sure the unit is placed on a level and stable surface.

Setting up Your Power Gig Professional Sound System

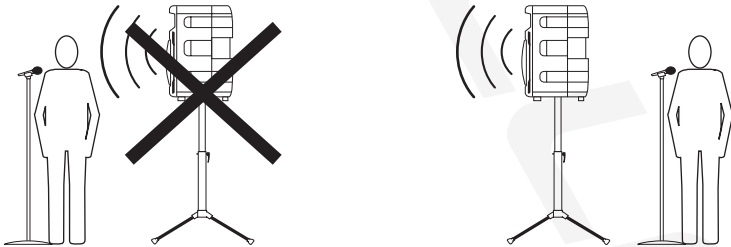
Your Power Gig is set up to produce the full spectrum of sound from its woofer and tweeter horn combination. The lower frequencies seek out the floor of the room that they are playing in and travel along the floor and walls. The tweeter horn is more directional. Hence, when setting up your system, it's more important to make sure that the tweeter horns are not blocked by any furniture and are located/aimed at ear level of the listening audience. Woofer aiming is not as critical as explained previously due to the nature of the woofer sounds, allowing them to travel through various paths even when blocked.

It is therefore recommended that when setting up your system you set up your speakers on provided stands so that the tweeter sounds will radiate above the listening crowd. This will guarantee optimum sound dispersion and achieve clear vocal sound reproduction.



How to Avoid Irritating Feedback

The placement of your microphone is critical in avoiding feedback from your Power Gig system. Never set up your microphone in front of the speaker. Always set up your microphone behind the speaker. When approaching the speaker to make any adjustments, approach the speaker from the rear and do not walk directly toward the front of the speaker.



Assembling Your Power Gig Professional Sound System Stands

1. Remove the stands from their packaging.
2. Loosen up the adjustment knob (fig. a) and spread the legs to the desired width (fig. b). We recommend spreading the legs to the point that the support bars are parallel with the floor. Retighten the leg adjustment knob so that the legs are securely positioned (fig. c). Do not overtighten.

fig. a



fig. b



fig. c



3. Loosen the stand extension by loosening the locking knob (fig. d). Lift the extension to the desired height (fig. e). Now insert the safety detent pin (fig. f). Make sure the pin goes all the way through the extension pole (fig. g). If you retighten the locking knob, do not overtighten it.

fig. d



fig. e



fig. f



fig. g



Mounting the Speaker

1. Unpack the speakers from their packaging.
2. Carefully lift the speaker above the stand, line up the extension pole with the mounting hole at the bottom of the speaker (fig. h, next page). This step may require a second person for assistance.
3. Once the speaker is mounted on the stand, secure it by tightening the locking knob located behind the pole opening at the bottom of the speaker (fig. i, next page).

Mounting the Speaker (continued)

fig. h



fig. i



Connecting the Passive Speaker

To connect the passive speaker to the active unit, use the included $\frac{1}{4}$ " to $\frac{1}{4}$ " cable. Connect one end of the cable to the $\frac{1}{4}$ " port on the active unit marked Speaker Out (fig. j). Now connect the other end to the $\frac{1}{4}$ " port on the passive unit marked Speaker In (fig. k). Make sure that the power to the active unit is turned off before you connect the passive unit.

fig. j

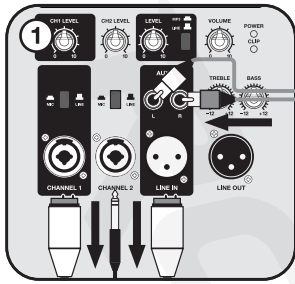


fig. k

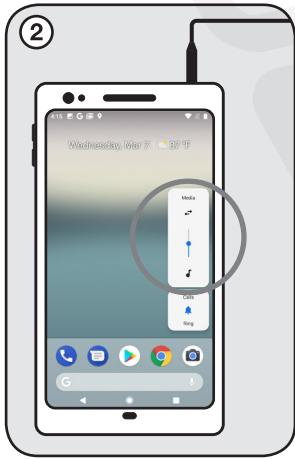


Setting Level Controls

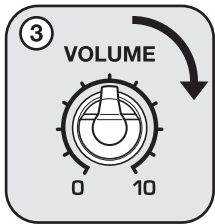
It is best practice to set your input level controls (gains) in this manner:



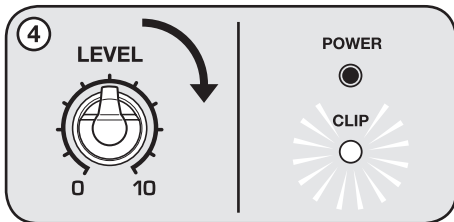
1. Unplug all inputs except for the one you wish to set the gain for (in this instance, the Line In RCA inputs). Make sure the MP3/Line button is set to Line.



2. Set the line level input device volume (smartphone, tablet, MP3 player, etc.) to 60%.



3. Set the RPG152K V2 master volume to 75%.



4. Slowly turn up the level on the selected input (in this case, the Line/MP3 level). As soon as the clip indicator LED goes on or you hear any distortion, turn it down one or two notches.

Setting Level Controls (continued)

After you set the levels on all input devices, you can readjust the RPG152K V2 levels as necessary. When adjusting the Mic level controls, you must speak into the microphone and adjust the level control as needed. This is because adjustments to the mic input are a matter of mic volume in relation to the music volume and not necessarily a clipping issue.

! PLEASE NOTE

Because mixers feature two volume controls (channel level and master), when connecting one via the XLR line in port, the procedure is slightly different. The RPG152K V2 master volume should be set to 50% and the Line/MP3 level control should be set to 50%. Set the mixer master volume to 50% and make the adjustments in Step 4 on the mixer channel level control. If after making these adjustments the signal still isn't strong enough, you can additionally boost the signal by turning up the Line/MP3 level control.

APPLICATION USES

Microphone Presentations

This unit features ultra-low noise Mic input via two combo XLR/¼" TRS input ports.

1. Make sure the Power switch is in the OFF position.
2. Plug your microphone into the Channel 1 or Channel 2 ¼" jack or XLR port.
3. Make sure the corresponding channel's mic/line selector button is set to Mic.
4. Switch on the unit.
5. Refer to the "Setting Level Controls" section of this manual for instructions on how to properly adjust the Mic level controls.

Always stand behind the RPG152K V2 when making your microphone adjustments to avoid feedback distortion.

Line/Auxiliary Input

This unit features line level input via two combo XLR/¼" TRS input ports or the XLR/RCA line input.

Channels 1 and 2 XLR/¼" TRS input ports:

Use the combo XLR/¼" inputs to connect additional signal sources such as mixers, keyboards, electronic drums, etc.

1. Make sure the Power switch is in the OFF position.
2. Plug the signal source into the Channel 1 or Channel 2 jacks.
3. Make sure the corresponding channel's mic/line selector button is set to Line.
4. Switch on the unit.
5. Refer to the "Setting Level Controls" section of this manual for instructions on how to properly adjust the Line level controls.

XLR/RCA line input ports:

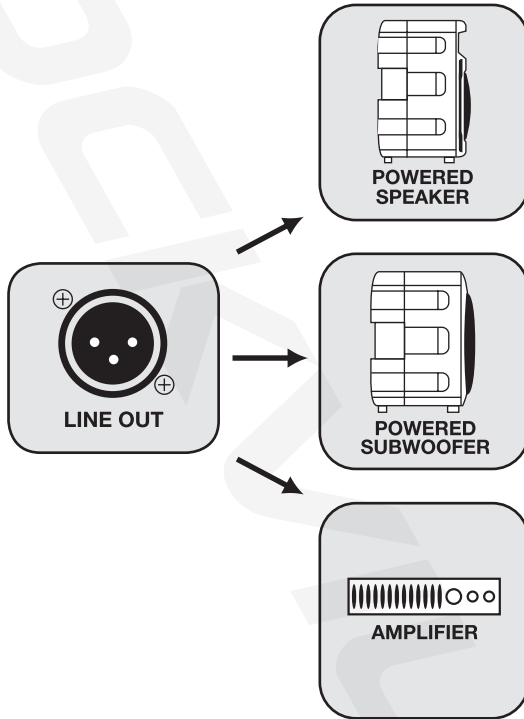
Use the XLR input to connect a mixer or the RCA inputs to connect an additional line level signal source such as a smartphone, tablet, MP3 player, CD player, etc.

1. Make sure the Power switch is in the OFF position.
2. Connect the mixer to the XLR input or line level signal source to the RCA inputs **(never use both at once)**.

3. Make sure the MP3/Line Input button is set to Line.
4. Switch on the Power Gig unit.
5. Refer to the “Setting Level Controls” section of this manual for instructions on how to properly adjust the line input level control (gains).

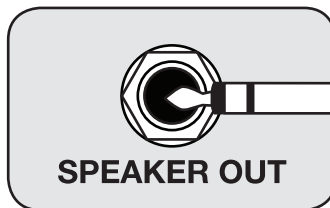
Line Out Balanced Connection

The XLR line output allows you to output the amplifier signal to a powered subwoofer, another powered speaker, or an amp, which will, in turn, power other speakers. Simply connect the output device to the RPG152K V2 using an XLR to XLR or an XLR to ¼" TRS cable to share the signal. We recommend you use high-quality cables such as Rockville's RCXFM20E-B XLR to XLR cable or the RCXMB20-B XLR to ¼" TRS cable.



Speaker Output Connection

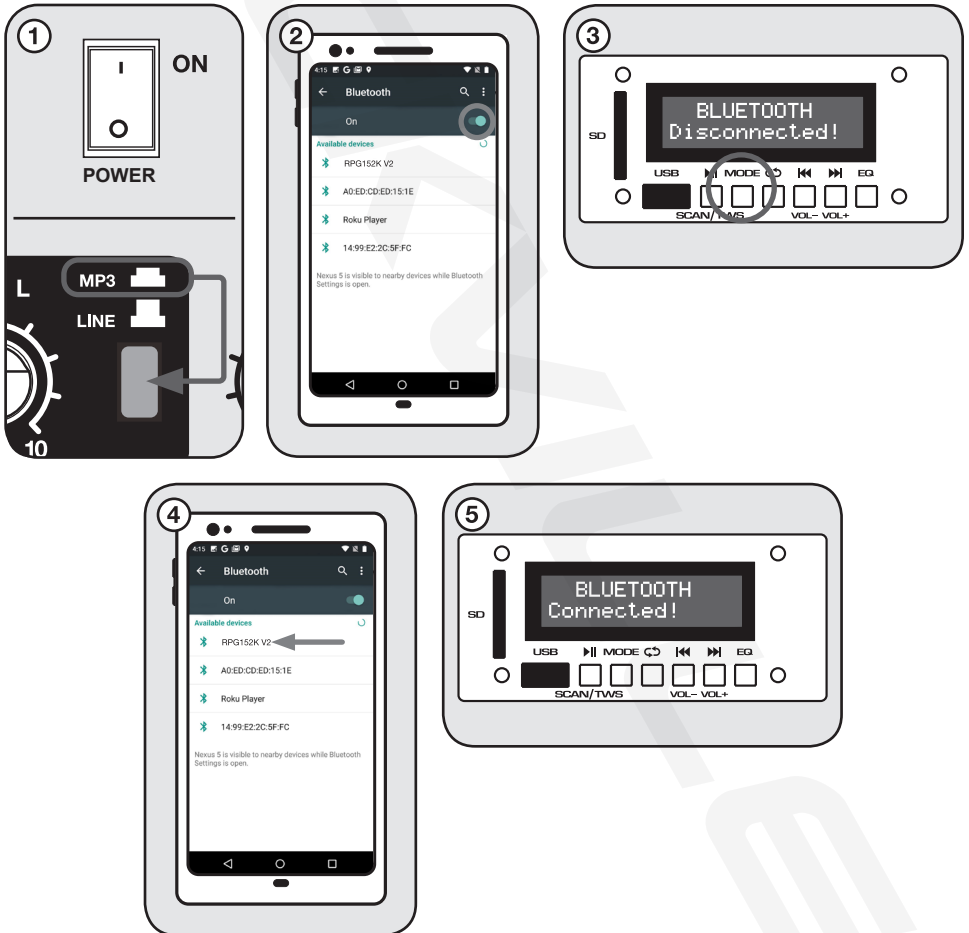
The ¼" TS output marked Speaker Out is used to connect the active unit to the passive unit. Passive speaker impedance must always be 8 ohms.



Bluetooth Pairing

To connect your iPod, iPhone, MP3 player, Android phone, or any other Bluetooth-capable device, follow the steps listed below.

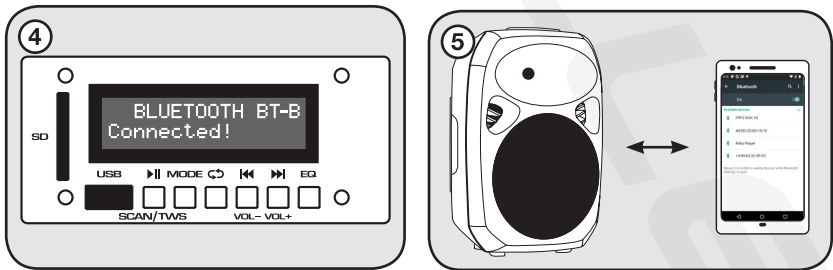
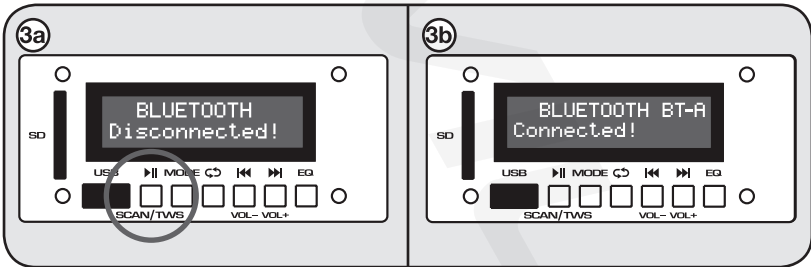
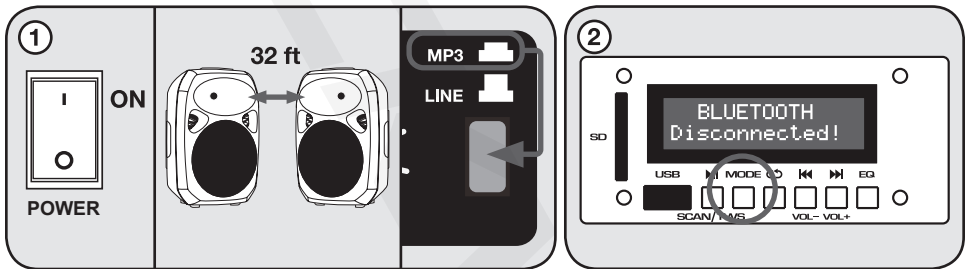
1. Make sure the RPG unit's Power switch is in the ON position and the MP3/Line selector button is set to MP3.
2. Turn on the Bluetooth feature on your device.
3. Push the Mode button on your RPG unit until you are in Bluetooth mode. The LCD screen will read "BLUETOOTH Disconnected"
4. Once in Bluetooth mode, the unit should show up on your device as "RPG152K V2." Select it from your list of available devices.
5. If pairing is successful, the LCD screen will read "BLUETOOTH Connected". You can now begin to stream music.



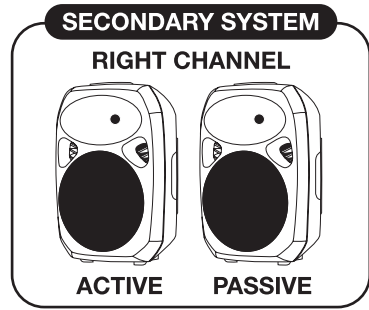
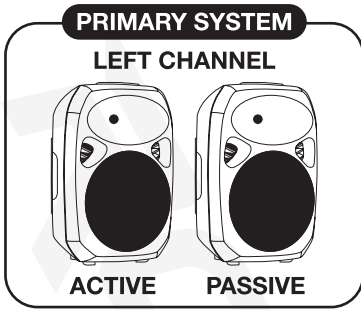
Wireless Speaker Linking

The RPG152K V2 features True Wireless Stereo (TWS) Bluetooth linking. This means you can purchase two of these systems and link them together to play in stereo wirelessly.

1. Make sure both RPG152K V2's active unit's Power switches are in the ON position and that they are within 32 feet of each other. Set the MP3/Line level button to MP3.
2. Press the Mode button on both of the units to enter Bluetooth mode. The LCD screens should show that the speakers are not connected via Bluetooth or to another speaker.
3. Press the SCAN/TWS button on one of the units for 3 seconds (3a). If pairing is successful, the unit's LCD screen will read "BLUETOOTH BT-A Connected" (3b). This is the primary, and all functions will be controlled by this unit.
4. The secondary unit's LCD screen will read "BLUETOOTH BT-B Connected."
5. Once the speakers are connected, go to your phone's Bluetooth interface and select "RPG152K V2" from the list of devices. If connection is successful, you will hear the same audio from both units. You are now ready to enjoy true wireless stereo sound!



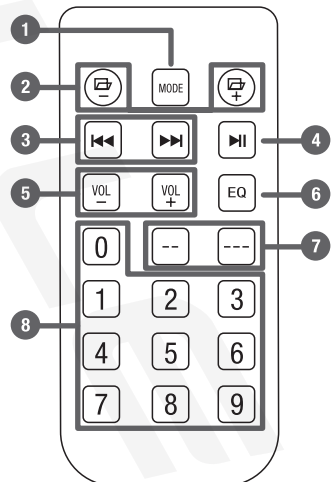
Wireless Speaker Linking (continued)

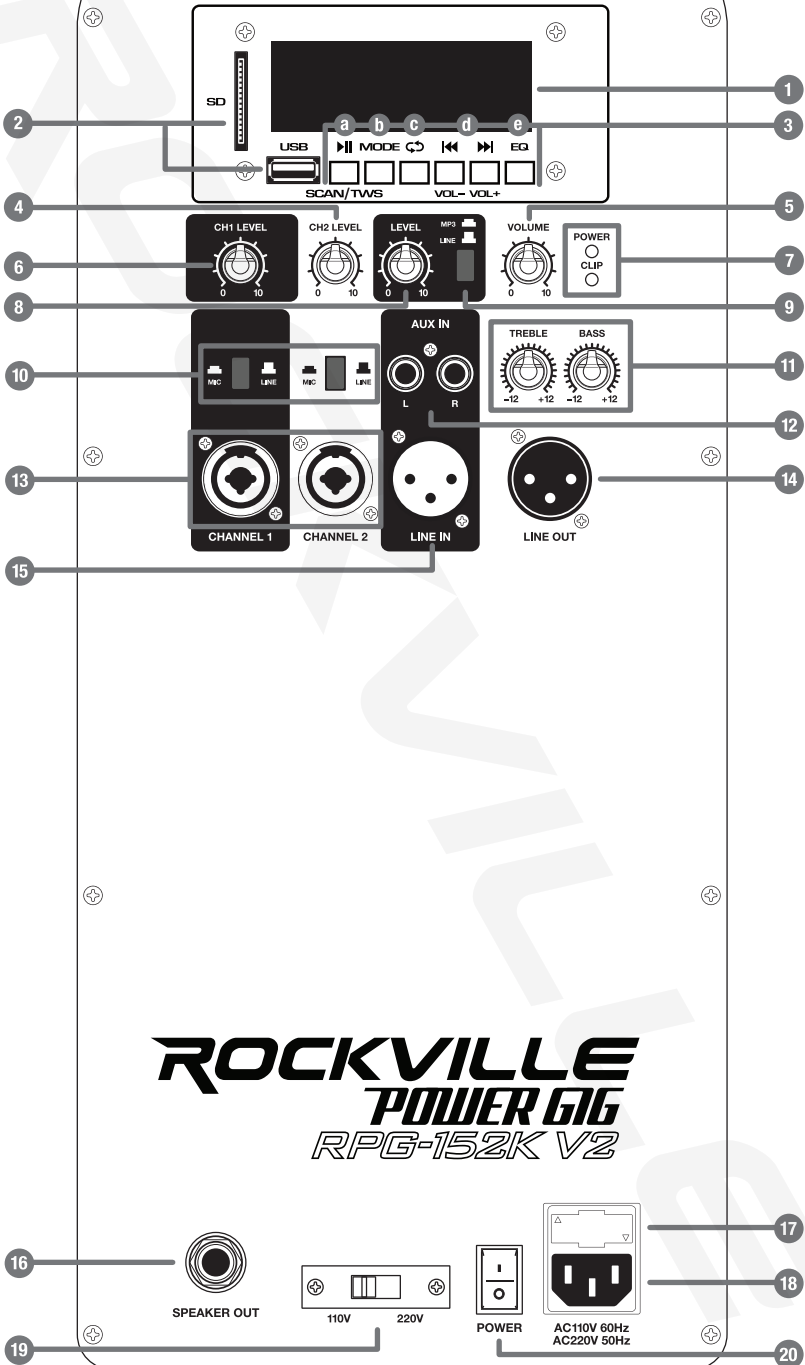


! PLEASE NOTE Once the systems are in TWS mode, the primary system becomes the left channel and the secondary system becomes the right channel. The active unit of the primary system will control all playback and volume functions.

Functions Remote Control

1. **MODE:** Select input mode: Bluetooth, SD, USB, RADIO.
2. **FOLDER-/FOLDER+:** Navigate through file folders while in SD or USB mode.
3. **PREVIOUS TRACK/NEXT TRACK:** While in SD, USB, and Bluetooth mode press to move forward or back through tracks. While in RADIO mode press to navigate through programmed stations.
4. **PLAY/PAUSE:** While in SD, USB, and Bluetooth mode press once to play track and press again to pause. While in RADIO mode, press and hold for 3 seconds to enable automatic station programming.
5. **VOL-/VOL+:** Raise or lower master volume.
6. **EQ:** Press to cycle through preset EQs while in USB and SD modes: Normal, Rock, Pop, Jazz, Country.
7. **MULTI-DIGIT BUTTONS:** These buttons correspond to the keypad. They allow you to select multi-digit track numbers. Simply press the appropriate multi-digit button (double dash to enter 2 digits, triple dash to enter 3 digits), then enter the numbers on the keypad.
8. **KEYPAD:** Direct-select tracks while in SD and USB mode. While in RADIO mode, use to direct-select programmed stations. It will not allow you to select individual stations.





ROCKVILLE

POWER GIG

RPG-152K V2

Functions (continued)

1. LCD display screen
2. USB and SD card input
3. MP3 player controls:
 - a. Play/Pause, Scan, TWS - Press this button once to start music playback; press again to pause. In FM Radio mode press and hold for 5 seconds to automatically scan and save all available stations. See page 11 for TWS pairing procedure.
 - b. Mode - Switch between modes (FM Radio, Bluetooth, USB, and SD).
 - c. Repeat - Press to repeat current track. Press again to repeat all tracks. Press once again to exit Repeat mode.
 - d. **⏮**(VOL-)/**⏭**(VOL+) - In USB/SD/Bluetooth mode press these buttons to skip tracks. In FM mode press these buttons to skip stored stations. In any mode press and hold to adjust MP3 module volume.
 - e. EQ button allows you to toggle between the 5 presets.
4. Channel 2 level control
5. Master volume control
6. Channel 1 level control
7. Power LED indicator and amplifier clip limit LED indicator
8. MP3/Line input level control
9. MP3/Line input selector button
10. Channels 1 and 2 mic/line input selector button
11. 2-band equalization control panel
 - Bass adjusts low frequencies to ± 12 dB.
 - Treble adjusts high frequencies to ± 12 dB.
12. RCA AUX inputs
13. Channels 1 and 2 combo XLR/ $\frac{1}{4}$ " inputs
 - When the mic/line selector button is set to mic, these inputs can accept balanced and unbalanced mic signals. When you use an unbalanced $\frac{1}{4}$ " TS plug, the line input automatically turns the ring into ground.
 - When the mic/line selector button is set to line, these inputs can accept balanced and unbalanced signals from a variety of sources such as keyboards, electronic drums, mixers, etc. When using an unbalanced $\frac{1}{4}$ " TS plug, the line input automatically turns the ring into ground. Please do not plug microphones into the inputs when the selector button is set to line as it will have poor sound quality.
14. XLR line output will send the amplifier signal to a powered subwoofer, another powered speaker, or an amp, which will, in turn, power other speakers.
15. XLR line input
16. Output to passive speaker
17. User-serviceable fuse (See page 17 for replacement procedure.)
18. IEC AC power socket
19. Voltage selector switch
20. Power switch

Features

- 1500 watts peak/375 watts RMS/750 watts program power
- Two combo 1/4"/XLR mic/line input
- Channel 1 and 2 mic/line input selectors
- Independent Channel 1 and 2 level controls
- XLR + RCA line input
- Line level control
- MP3/Line input selector button
- XLR line output
- Master volume
- 2-band EQ: Bass and Treble
- Power LED
- Clip LED
- USB/SD input: acceptable file formats: MP3, WAV, WMA
- Built-in FM radio
- 5-mode preset EQ
- Bluetooth connectivity
- True Wireless Stereo (TWS) linking
- Wireless remote control
- LCD display screen
- Output to second passive unit with included cable
- Includes one wired microphone
- Includes one pair of speaker stands
- 110/220 volt switchable
- Fuse: T5AL 250V
- High power 15" long-throw woofer
- 25mm Piezo compression horn tweeter
- Frequency response: 45Hz – 20KHz
- Maximum SPL @ 1w/1m: 125dB
- Impedance: 8 ohm

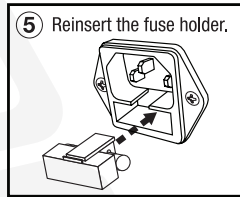
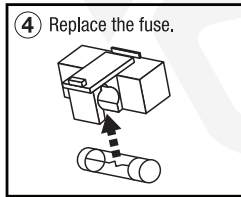
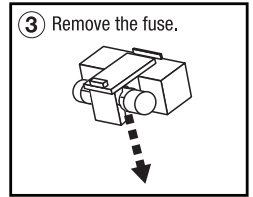
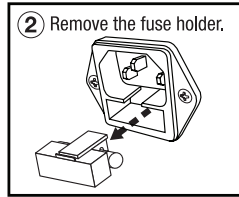
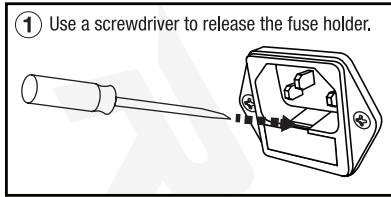
Troubleshooting

PROBLEM	SOLUTION
No power	<ol style="list-style-type: none">1. Make sure the unit is plugged in and the power switch is in the ON position.2. Check that the power cable is plugged in tightly to the unit.3. Check and replace the fuse if necessary. See fuse replacement diagram on page 17.4. If people or equipment tend to step on and roll over or stretch your power cable, it can get damaged. Always try a second cable to test for shorts in original cable. Dispose of original damaged power cables immediately.

PROBLEM	SOLUTION
No sound/ distorted sound	<ol style="list-style-type: none"> 1. Check that all appropriate cables are plugged in correctly. 2. Check the volume settings (see page 7). 3. Be sure volume and gain of appropriate channels are set above the 0 level and matched correctly (see pages 7 and 8). 4. Be sure your microphone is on. 5. If using a mixing console, make sure fader and balance are set to center positions and levels are increased. 6. Check the MP3/Line or Mic/Line buttons to ensure the proper source is selected. 7. If volume and treble/bass settings are maxed out, turn one of them down, as you may be overdriving the unit.
Buzzing sound	<p>Make sure you are using a proper cable. For 1/4" cables, there are three types: instrument, TS (unbalanced), and TRS (balanced). Check the requirements of the connected gear and the input of the speaker and make sure you are using the appropriate cable.</p>
Mic feedback	<p>Point the mics away from the speaker. Make sure the mics are behind the speaker, not in front of it (see page 4).</p>
Poor mic sound	<ol style="list-style-type: none"> 1. Make sure you are using the Mic In port and that the Mic/Line selector button is set to mic. 2. If using wireless mics, connect them into the Line input of your mixer.
Not enough bass	<p>Add a subwoofer to your setup — PA speakers do not play deep frequencies as well as a subwoofer. Regardless of brand or model, if you want deep, thumping bass you must add a subwoofer.</p>
Bluetooth pairing fails	<ol style="list-style-type: none"> 1. Check to see that both devices are turned on and that your Bluetooth device is discoverable. Set MP3/Line button to MP3. 2. Turn both devices off and then on again. 3. Make sure you've selected the proper source. 4. Make sure that the Bluetooth device is within 5 feet of the unit. 5. Move both devices away from other Bluetooth devices, microwaves, wireless routers, and other electronics. 6. Make sure that the unit is not paired to a previously paired device.
TWS pairing fails	<ol style="list-style-type: none"> 1. Check to see that both devices are turned on. 2. Make sure both devices are in Bluetooth mode. 3. Make sure both RPG units are near each other. 4. Make sure that the unit is not paired to a previously paired device. 5. If TWS pairing is successful, but Bluetooth pairing to the main unit fails, please look at the "Bluetooth pairing fails" section above.
No SD or USB playback	<ol style="list-style-type: none"> 1. Make sure you are in USB/SD mode. 2. Make sure the SD card or USB drive is properly connected. 3. Make sure the MP3/Line button is set to MP3. 4. Make sure that the audio files are in the specified format (see page 15). 5. Make sure the SD card/USB drive is not damaged.

Fuse Replacement Diagram

Fuse type: T5AL 250V



ATTENTION
REPLACE FUSE WITH ONE OF
THE SAME TYPE AND RATING.

FEDERAL COMMUNICATIONS COMMISSION COMPLIANCE INFORMATION

Responsible party name: Rockville

Address: 600 Bayview Ave,
Entrance A,
Inwood, NY 11096

Hereby declares that the product(s) Power Gig RPG152K V2 V2 pro audio speaker system complies with FCC rules as mentioned in the following paragraph:

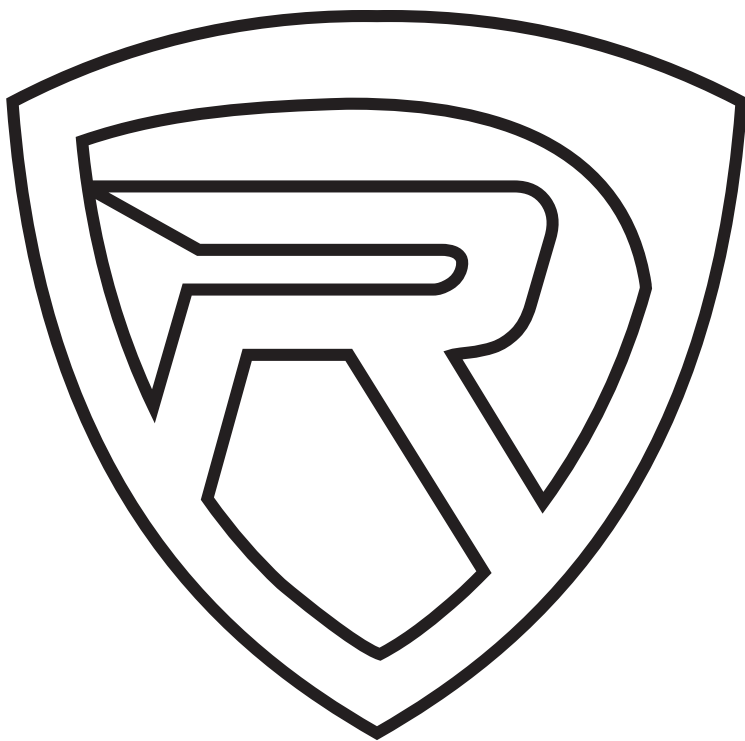
This device complies with Part 15 of the FCC rules. Operation is subject to the following two conditions: (1) this device may not cause harmful interference, and (2) this device must accept any interference received, including interference that may cause undesired operation.

Note: This equipment has been tested and found to comply with the limits for a Class B digital device, pursuant to Part 15 of the FCC rules. These limits are designed to provide reasonable protection against harmful interference in a residential installation. This equipment generates, uses, and can radiate radio frequency energy and, if not installed and used in accordance with the instructions, may cause harmful interference to radio communications. However, there is no guarantee that interference will not occur in a particular installation. If this equipment does cause harmful interference to radio or television reception, which can be determined by turning the equipment off and on, the user is encouraged to try to correct the interference by one or more of the following measures:

- Reorient or relocate the receiving antenna.
- Increase the separation between the equipment and receiver.
- Connect the equipment to an outlet on a circuit different from that to which the receiver is connected.
- Consult the dealer or an experienced radio/TV technician for help.

ROCKWELL

ROCKVILLE



RockvilleAudio.com

© 2021 ROCKVILLE // Features and specifications are subject to change and/or improvement without notice.