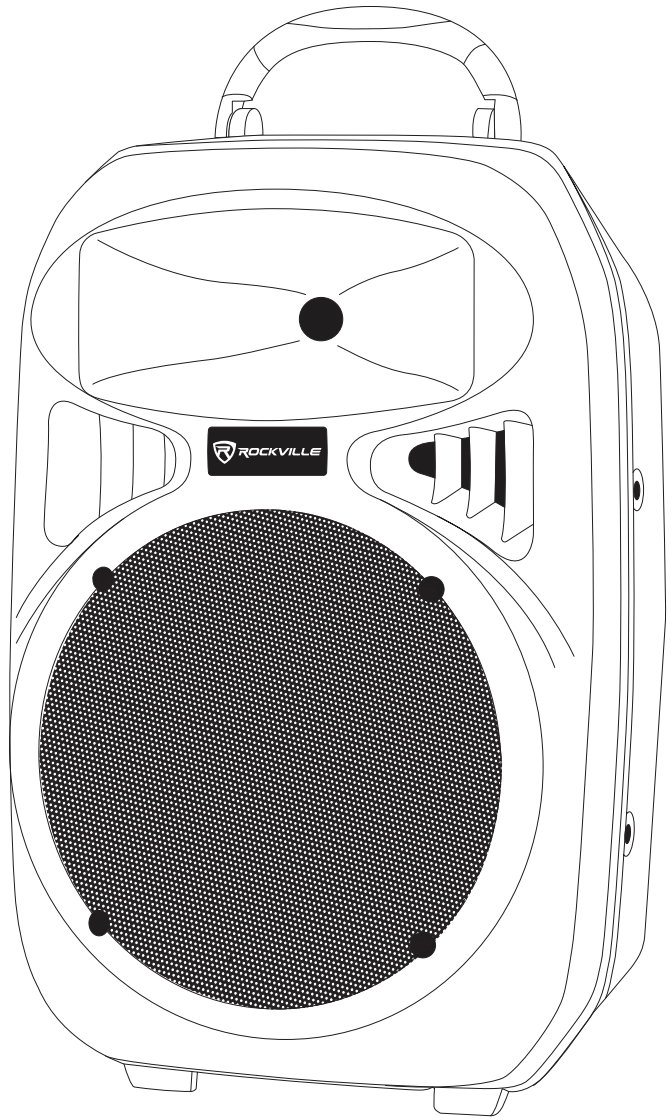


ROCKVILLE



OWNER'S MANUAL

RPG082K

8" ACTIVE DJ/PA SPEAKERS

Who reads manuals?

Instead, go to vimeo.com/440117699
or scan the QR code and watch a
short video, which shows you how to
set this item up and how to use it.



Thank you for purchasing this Rockville RPG082K pro audio speaker system. Please read this owner's manual carefully for proper use of your RPG082K. Should you need technical assistance, please call our technical help line at 1-646-758-0144, Monday through Friday, 9am to 5pm EST.

Includes

- (2) 8" DJ/PA speakers (1 active/1 passive)
- (2) rugged tripod speaker stands
- Wired microphone
- Female XLR to 1/4" microphone cable
- (1) 1/4" cable for active to passive speaker connection
- FM radio antenna
- Power cable
- Wireless remote control
- Manual
- Warranty card

IMPORTANT SAFETY INSTRUCTIONS

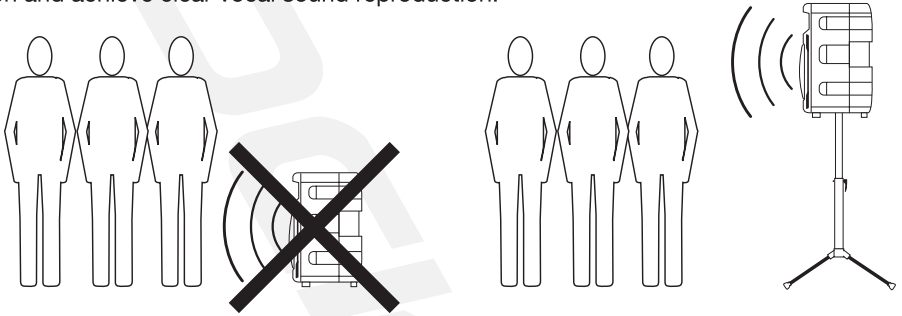


- To reduce risk of electric shock, never open the unit. There are no user serviceable parts, refer service to an authorized Rockville service center.
- Do not expose this unit to any kind of moisture.
- Please ensure that the unit is situated in a properly ventilated area.
- Make sure the unit is placed on a level and stable surface.

Setting Up Your RPG Professional Sound System

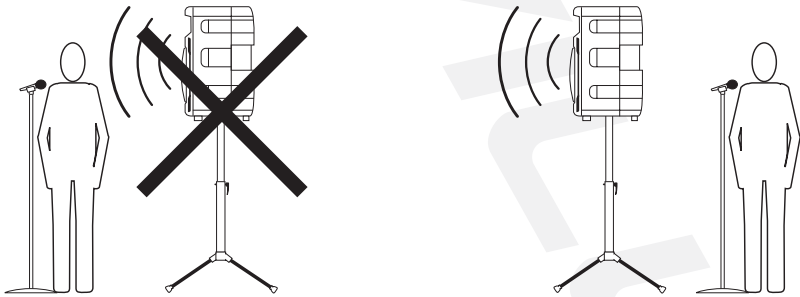
Your RPG is set up to produce the full spectrum of sound from its woofer and tweeter horn combination. The lower frequencies seek out the floor of the room they are playing and travel along the floor and walls. The tweeter horn is more directional. Hence when setting up your system its more important to make sure that the tweeter horns are not blocked by any furniture and are located / aimed at ear level to the listening audience. Woofer aiming is not as critical as explained previously due to the nature of the woofer sounds able to travel through various paths even when blocked.

It is therefore recommended that when setting up your system you set up your speakers on speaker stands, such as the Rockville model RVSS-2 (not included) so that the tweeter sounds will radiate above the listening crowd. This will guarantee optimum sound dispersion and achieve clear vocal sound reproduction.



How To Avoid Irritating Feedback

The placement of your microphone is critical in avoiding feedback through your RPG system. Never set up your microphone in front of the speaker. Always set up your microphone behind the speaker. When approaching the speaker to make any adjustments, we recommend approaching the speaker from the rear and not walking directly towards the front of the speaker.



Assembling Your Power Gig Professional Sound System

RPG122K shown for display purposes. Actual equipment (speakers/stands) may differ slightly.

Stands

1. Remove the stands from their packaging and examine them to ensure that they are in proper working order.
2. Loosen up the adjustment knob (fig. a) and spread the legs to the desired width (fig. b). We recommend spreading the legs to the point that the support bars are parallel with the floor. Re-tighten the leg adjustment knob so that the legs are securely positioned (fig. c). Do not overtighten.

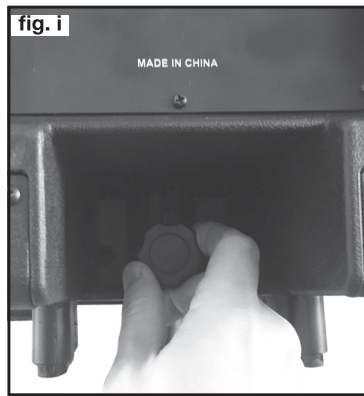


3. Loosen the stand extension by loosening the locking knob (fig. d). Lift the extension to the desired height (fig. e). Now insert the safety detent pin (fig. f). Make sure the pin goes all the way through the extension pole (fig. g). If you retighten the locking knob, do not overtighten it.



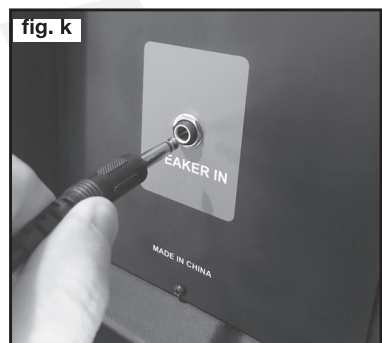
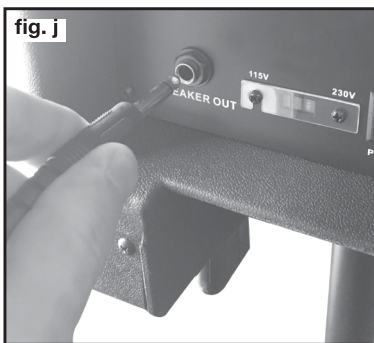
Mounting the Speaker

1. Unpack the speakers from their packaging. Check for any visible damage.
2. Carefully lift the speaker above the stand, lining up the extension pole with the mounting hole at the bottom of the speaker (fig. h). This step may require a second person for assistance.
3. Once the speaker is mounted on the stand, secure it by tightening the locking knob located behind the pole opening at the bottom the speaker (fig. i).



Connecting the Passive Speaker

To connect the passive speaker to the active unit, use the included $\frac{1}{4}$ " to $\frac{1}{4}$ " cable. Connect one end of the cable to the $\frac{1}{4}$ " port on the active unit marked SPEAKEROUT (fig. j). Now connect the other end to the $\frac{1}{4}$ " port on the passive unit marked SPEAKER IN (fig. k). Make sure that the power to the active unit is turned off before you connect the passive unit.



Setting Level Controls

It is best practice to set your input volume (gains) in this manner:

1. Unplug all inputs except for the one you wish to set the gain for. In this instance, the AUX 1 RCA inputs.
2. Set the line level input device volume (smart phone, tablet, MP3 player, etc.) to 60%.
3. Slowly turn up the VOLUME. As soon as the clip indicator LED goes on or you hear any distortion – turn it down one or two notches.



! PLEASE NOTE

A. Because mixers feature two volume controls (channel and master), when connecting one via the XLR line in port, the procedure is slightly different. Set to RPG's volume to 50% and set the mixer master volume to 50%. Make the adjustments in step 3 on the mixer channel level control. If after making these adjustments the signal still isn't strong enough, you can additionally boost the signal by turning up the RPG's VOLUME control.

B. When adjusting the MIC LEVEL control, you must speak into the microphone and adjust the control as needed. This is because adjustments to the mic input are a matter of mic volume in relation to the music volume and not necessarily a clipping issue.

Microphone Presentations

Your RPG features a balanced microphone input accessible via a combo XLR/1/4" TRS input.

1. Switch OFF your RPG.
2. Plug in your microphone into the jack marked MIC IN using an XLR or 1/4" TRS cable.
3. Switch ON your RPG.
4. Refer to the "Setting Level Controls" section of this manual for instructions on how to properly adjust the input volume (gains).

Always stand behind the RPG when making your microphone adjustments to avoid feedback distortion. When using a mic in BT mode, music must be actively streaming in order for the mic to function.

Line Input

You can connect an additional stereo signal source (such as CD players, DVD music players, MP3 players, etc) without the use of a mixer console. Plug the device directly into the combo XLR/1/4" TRS input labeled LINE IN.

1. Switch OFF your RPG.

2. Connect the music source to the combo XLR/¼" TRS input labeled LINE IN using an XLR or ¼" TRS cable.
3. Switch ON your RPG.
4. Refer to the "Setting Level Controls" section of this manual for instructions on how to properly adjust the input volume (gains).

Aux Input

You can use the AUX 1 input when you wish to hook up an additional stereo signal source without the use of a mixer console. CD players, DVD music players, MP3 players etc. can be plugged directly in to the RCA jacks labeled AUX 1.

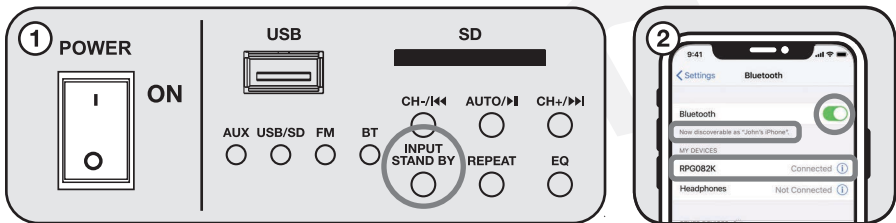
1. Switch OFF your RPG.
2. Connect the stereo signal source to the RCA jacks marked AUX 1.
3. Switch ON your RPG.
4. Refer to the "Setting Level Controls" section of this manual for instructions on how to properly adjust the input volume (gains).

Bluetooth Pairing

To connect your iPod, iPhone, MP3 player, Android phone or any other Bluetooth capable device follow the steps listed below.

1. Switch ON your RPG and press the INPUT STAND BY button to select BT mode. The BT indicator LED will flash intermitently.
2. Turn on the Bluetooth feature on your device and ensure that it is discoverable.
3. Look for "RPG082K" on the list of available devices and select it.
4. Once paired, you will hear a tone and the BT indicator LED will remain illuminated. The RPG unit will remember the last paired device. When the unit is in BT mode and the device is nearby, it will connect to it automatically.
5. If you have problems pairing your device please check the troubleshooting guide.

Please note: If a mic is conected while in BT mode, there must be music actively streaming in order for the mic to function.



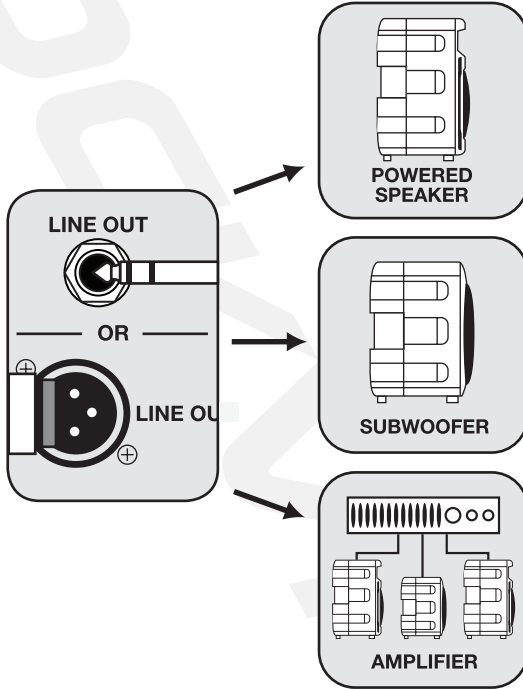
USB/SD Input

For USB/SD playback insert an SD card or USB flash drive. The USB/SD LED indicator will illuminate and the unit will automatically begin playback. Please note, when an SD card or USB flash drive is inserted, it will override all other input modes. If you switch to another mode and wish to return to USB/SD mode, simply press the INPUT STAND BY button until the USB/SD LED is illuminated.

2. Press the INPUT STAND BY button until the FM LED is illuminated.
3. Press and hold the AUTO/|| button to scan for and save available FM stations.
4. Use the ◀◀/CH- and ▶▶/CH+ buttons to select stations.

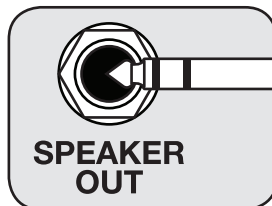
Line Out Balanced Connection.

The XLR/1/4" line output ports allow you to send the amplifier signal to a powered subwoofer, another powered speaker, or an amp, which will, in turn, power other speakers. Simply connect the output device to the either one of the ports labeled LINE OUT using an XLR to XLR, XLR to 1/4", or a 1/4" to 1/4" cable to share the signal. We recommend you use high quality cables such as Rockville's RCXFM20E-B XLR to XLR cable, the RCXMB20-B XLR to 1/4" TRS cable, or the RCTR series 1/4" TRS to 1/4" TRS cables. Do not use both outputs at once.



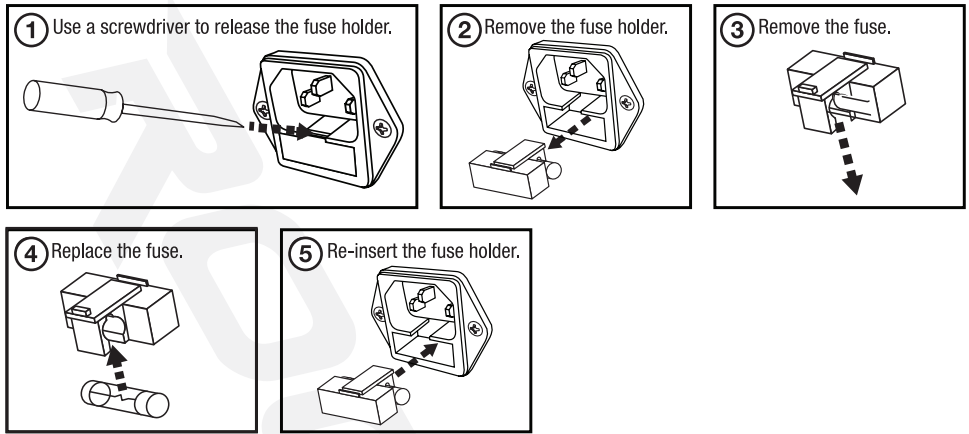
Passive Speaker Output

The 1/4" output marked SPEAKER OUT is for connecting the active RPG speaker to the passive RPG speaker (see page 5).



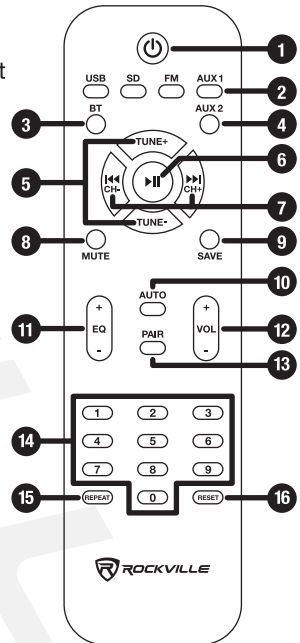
Fuse replacement Diagram

Fuse type: 250V 5A

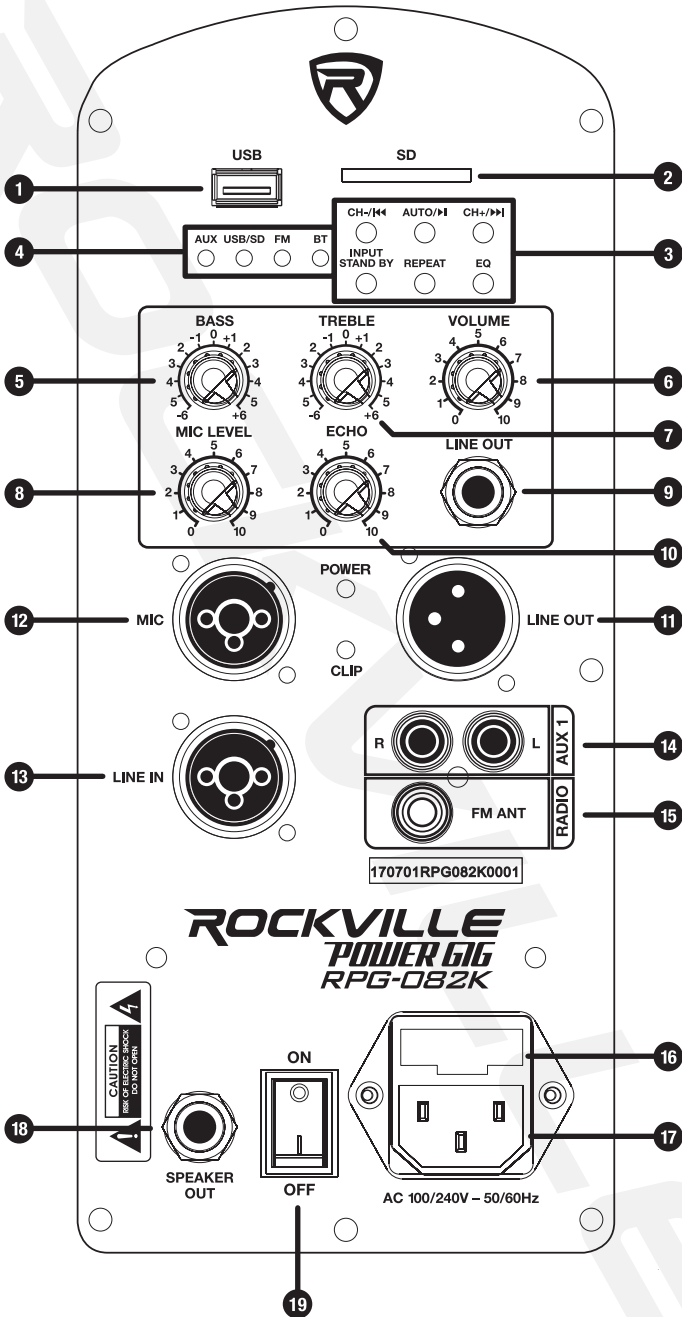


Remote Control Functions

1. Power
2. Mode selection buttons
3. BT: used to select BT mode
4. AUX 2: used to access the LINE IN Combo XLR/ 1/4" line input
5. TUNE+/-: use to manually tune FM stations
6. PLAY/PAUSE
7. CH-/◀◀ and CH+/▶▶: press to select tracks in USB, SD, and BT mode or select stations in FM radio mode.
8. MUTE
9. SAVE: press to save manually tuned stations
10. AUTO: press to automatically scan and save available FM stations
11. EQ+/-: used to select preset EQ in USB or SD mode
12. VOL+/-: increase or decrease volume
13. PAIR: press to disconnect currently paired BT device and put the unit into BT pairing mode.
14. Key pad: used to directly select tracks in USB/SD mode or stations in FM mode.
15. REPEAT: press once to repeat current track, press again to repeat all tracks, press once more to exit repeat mode.
16. RESET: press to return the unit to factory settings



Features



1. USB input
2. SD card input
3. MP3 Player controls
 - **CH-/◀◀ and CH+/▶▶**: press to select tracks in USB, SD, and BT mode or select stations in FM radio mode.
 - **AUTO/▶**: press button once to play track, press again to pause. In FM radio mode press and hold to scan and save available stations.
 - **INPUT STAND BY**: use this button to toggle between AUX, USB/SD, BT, and FM mode.
 - **REPEAT**: press once to repeat the current track. Press twice to repeat all tracks. Press three times to exit repeat mode.
 - **EQ (USB/SD mode only)**: press to toggle between presets: pop, rock, jazz, classic, country, normal
4. Mode indicator LEDs
5. **Bass**: adjust the low frequencies to +/-6dB
6. Volume
7. **Treble**: adjust high frequencies to +/-6dB
8. Mic level
9. ¼" TRS line out jack
10. Echo effect
11. XLR line out jack
12. **Combo XLR/ ¼" mic input**: this port is designed for balanced and unbalanced mic signals. When you use an unbalanced ¼" TS plug, the line input automatically turns the ring into ground.
13. **Combo XLR/ ¼" line input**: this port accepts signals from a variety of sources such as keyboards, electronic drums, mixers, etc. When you use an unbalanced ¼" TS plug, the line input automatically turns the ring into ground. Please do not plug microphones into the line input, use the mic input port instead.
14. RCA auxiliary input ports
15. Radio antenna port
16. User serviceable fuse
17. IEC AC power socket
18. Output to passive speaker
19. Power switch

Features (continued)

- 500 watts peak/250 watts program power/125 watts RMS
- Built-in high efficiency class D digital amplifier
- High power 8" long-throw woofer with 1" high end tweeter
- 25mm compression horn drivers
- Bluetooth module built-in
- USB and SD card inputs. Maximum capacity: 128GB
- Acceptable file formats: MP3, WMA, APE, FLAC, and WAV
- FM radio built-in
- Combo jack XLR + 1/4" mic input
- RCA input
- Combo jack XLR + 1/4" line in
- XLR line output to connect a subwoofer, powered speakers, or an amplifier
- 1/4" line output to connect a subwoofer, powered speakers, or an amplifier
- Master volume control
- Bass and treble controls
- (1) high quality metal wired microphone and mic cable
- Microphone echo control is perfect for karaoke
- High quality wireless remote control included
- Compact and light weight system is very portable
- Distortion free sound even at max volume
- High-quality components and exceptionally rugged high impact ABS construction
- Handle on the top for easy carrying and setup
- Built-in equalizer: pop, rock, jazz, classic, country, normal (USB/SD mode only)
- (2) rugged tripod speaker stands included
- Input mode LED indicator
- Frequency Response: 45Hz – 20KHz
- Maximum SPL @ 1w/1m:100db
- Impedance: 4 ohm
- AC100-240v 50Hz/60Hz wide voltage for use in countries around the world!

Troubleshooting

PROBLEM	SOLUTION
No power	<ol style="list-style-type: none">1. Make sure the unit is plugged in and the power switch is in the ON position.2. Check that the power cable is plugged in tightly.3. Check and replace the fuse if necessary. See fuse replacement diagram on page 9.4. If people or equipment tend to step, roll over, or stretch your power cable it can get damaged. Always try a second cable to test for shorts in original cable. Dispose of original damaged power cables immediately.
No sound/ distorted sound	<ol style="list-style-type: none">1. Check that all appropriate cables are plugged in correctly.2. Check the Volume settings.3. Be sure your microphone is on.4. If using a mixing console make sure fader and balance are set to center positions and levels are increased.5. Make sure the proper source is selected.6. If volume, bass, and treble settings are maxed out, turn one of them down as you may be overdriving the unit.
Buzzing sound	Check the requirements of all input sources to make sure you are using the correct cable. There are 3 types of 1/4" cables: instrument, TS (unbalanced), and TRS (balanced).
Mic feedback	Point the mics away from the speaker. Make sure the mics are in back of the speaker, not in front of it.
Poor or no mic sound	<ol style="list-style-type: none">1. Make sure you are using the mic input port.2. If using a mic while in BT mode, the mic will not function unless music is actively streaming.
Bluetooth pairing fails	<ol style="list-style-type: none">1. Check to see that both devices are turned on and that your Bluetooth device is discoverable.2. Turn both devices off and then on again.3. Make sure you've selected the proper source.4. Make sure that the Bluetooth device is within 5 feet of the unit.5. Move both devices away from other Bluetooth devices, microwaves, wireless routers, and other electronics.6. Make sure that the unit is not paired to another device.
Poor radio reception	Make sure the antenna is connected and placed in a location that is free of interference.
No SD or USB playback	<ol style="list-style-type: none">1. Make sure you've selected the proper source.2. Make sure the audio files are not corrupt and that they are in the formats specified on pages 7 and 12.3. Make sure the USB drive or SD card are properly formatted. See pages 7 and 12.4. Make sure the USB drive or SD card are within the maximum allowed capacity.4. Check the USB drive or SD card for damage.

FEDERAL COMMUNICATIONS COMMISSION COMPLIANCE INFORMATION

Responsible party name: Rockville

Address: 600 Bayview Ave.
Entrance A
Inwood, NY 11096

Hereby declares that the product(s) RPG082K complies with FCC rules as mentioned in the following paragraph:

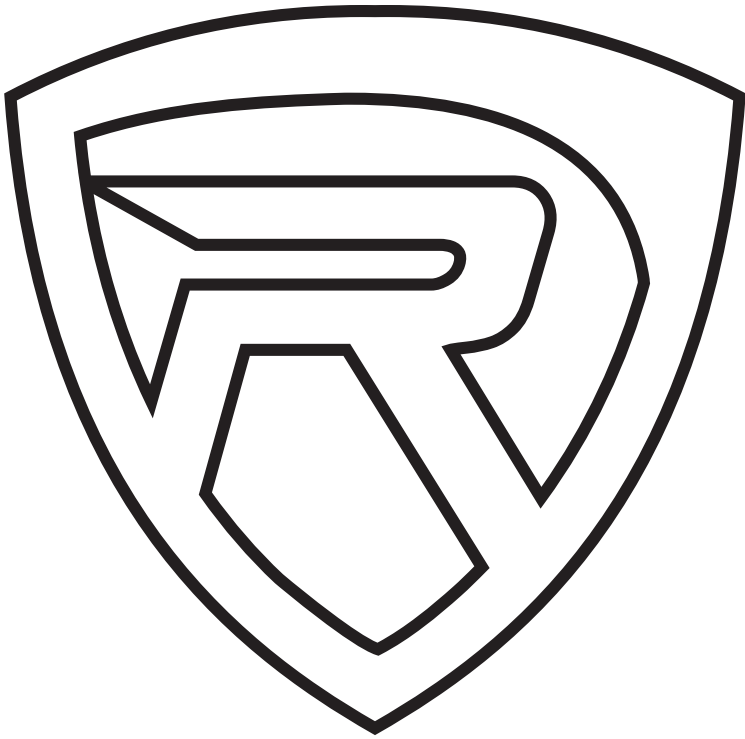
This device complies with Part 15 of the FCC rules. Operation is subject to the following two conditions: (1) this device may not cause harmful interference, and (2) this device must accept any interference received, including interference that may cause undesired operation.

Note: This equipment has been tested and found to comply with the limits for a Class B digital device, pursuant to Part 15 of the FCC rules. These limits are designed to provide reasonable protection against harmful interference in a residential installation. This equipment generates, uses, and can radiate radio frequency energy and, if not installed and used in accordance with the instructions, may cause harmful interference to radio communications. However, there is no guarantee that interference will not occur in a particular installation. If this equipment does cause harmful interference to radio or television reception, which can be determined by turning the equipment off and on, the user is encouraged to try to correct the interference by one or more of the following measures:

- Reorient or relocate the receiving antenna.
- Increase the separation between the equipment and receiver.
- Connect the equipment to an outlet on a circuit different from that to which the receiver is connected.
- Consult the dealer or an experienced radio/TV technician for help.

Rockwell

ROCKVILLE



RockvilleAudio.com

© 2020 ROCKVILLE // Features and specifications are subject to change and/or improvement without notice.