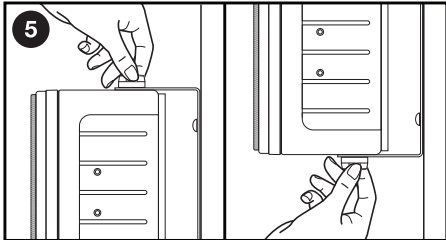
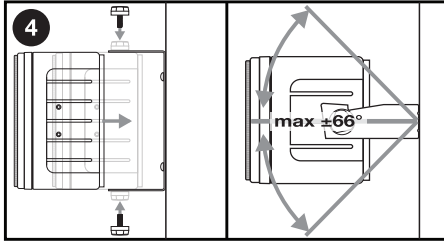
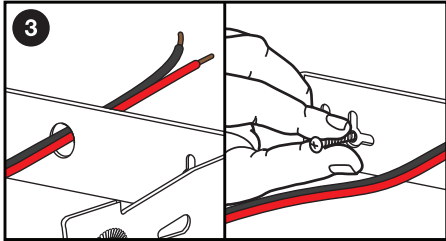
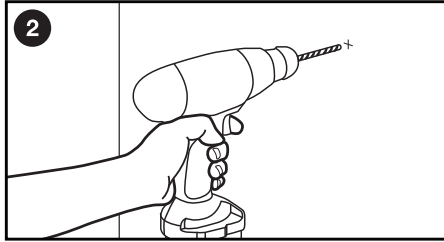
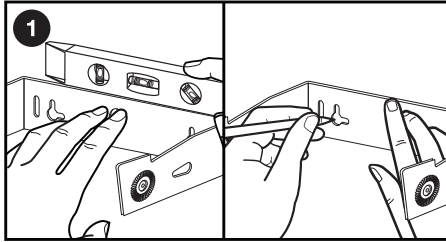


Mounting



1. Remove the bracket from the speaker and hold it up to the mounting surface. Use a level to ensure that the bracket is square with its surroundings. Once it is level, mark the location of the two screw holes. Be sure to use all the screw holes as this will ensure that the speaker bracket is securely attached to the mounting surface. Please note, these speakers can be mounted horizontally or vertically.

2. Remove the bracket and drill holes where your marks are. If you are unable to drill into a stud, be sure to use anchors.

3. Gently pull the speaker wire through the large circular hole in the middle of the bracket. Now place the bracket against the mounting surface so that the holes all line up. Use the included hardware to attach the bracket to the mounting surface.

4. Mount the speaker to the bracket and tighten the mounting knobs. Do not tighten completely. Check to make sure the speaker is in phase and functioning correctly. Angle the speaker to desired position.

5. Hand tighten the bracket knobs. Do not use power tools as they may over-tighten the knobs and strip the threads of the insert. Double check that the installation is safe and secure.

RockvilleAudio.com

©2024 ROCKVILLE // Features and specifications are subject to change and/or improvement without notice

ROCKVILLE

HP65S/HP65S-8 HP65S BLACK/HP65S-8 BLACK

6.5" 250 WATT OUTDOOR/INDOOR HOME
THEATER SPEAKERS W/SWIVEL BRACKETS

OWNER'S MANUAL

**ATTENTION:
WATCH THIS VIDEO BEFORE FIRST USE!**

Who reads manuals?

Scan the **QR codes** or go to the **URLs** to access how-to video(s), the owner's manual, and other important information you may need to get the most out of your item.

If you prefer written instructions, please read ahead!

With Rockville you get many options.



rockvillesupport.com/hp65s



rockvillesupport.com/hp65s-8



rockvillesupport.com/hp65s-black



rockvillesupport.com/hp65s-8-black

Missing items? If you ordered a bundle that includes more than one product and you are missing part of your bundle, then it just means your order shipped from two different warehouses. You will receive the remaining items very soon. If you have any concerns or inquiries, feel free to call our customer support center at 1-646-758-0144, 24 hours a day/7 days a week.

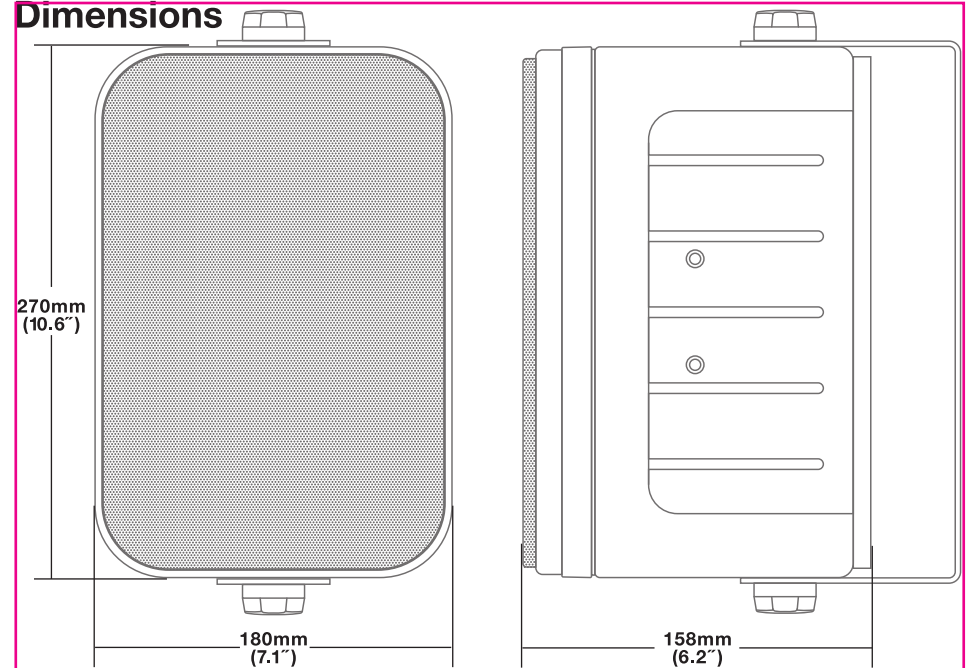
The Rockville HP65S series outdoor/indoor home theater speakers feature heavy duty ABS construction and can literally be thrown off your roof without getting damaged. These are also completely waterproof. You can keep them outdoors in the rain and moisture and they will not get damaged. These speakers are perfect for patios, large backyards, and indoor applications. These are also perfect for use in commercial spaces like gyms, hotels, and more. Rubber surrounds eliminate unwanted distortion while our forward-facing bass reflex port adds a deeper, more powerful bass response. Each pair puts out 160 watts RMS and 500 watts peak power. These speakers are extremely loud! We upgraded our model with gold-plated spring loaded push button terminals for easy and secure wiring.

Please read this guide carefully for proper use of your Rockville HP65S series outdoor/indoor home theater speakers. Should you need technical assistance please call our technical help line at 1-646-758-0144, 24 hours a day/7 days a week.

Features/Specifications

- Peak Power Handling: 500 Watts (per pair)
- RMS Power Handling: 160 Watts (per pair)
- IP44 rated to withstand, rain, wind, etc
- Stainless steel grill will not rust
- Polypropylene Cone
- Rubber Surrounds
- 1" Aluminum Voice Coils
- 6.5" Woofer
- ½" Mylar Dome Tweeters
- 20 oz. Ferrite Magnet
- Plastic Spring Loaded Push Terminals
- Completely Waterproof
- Tough ABS Construction
- Swiveling Metal Mounting Brackets
- Removable Metal Rustproof Grills
- Built-in Capacitor Crossover Network
- Frequency Response: 40Hz – 20kHz
- Sensitivity: 90dB @ 1w/1m
- Impedance: 4 Ohms or 8 Ohms
- Dimensions (H*W*D): (10.6" x 7.1" x 6.2" inches) (270 x 180 x 158 mm)
- Color: Black or White (w/paintable grill)

Dimensions



Connecting your Speakers

- First turn off your amp or receiver to avoid damage which may result from accidental shorting of the speaker leads.
- Correct phase polarity is critical for proper stereo imaging and bass performance. The red (+) terminal on your amplifier or receiver must be connected to the red (+) terminal on your speaker, the same applies for the black (-) terminal.
- Connect one loudspeaker at a time to ensure proper connection of left and right channels. Make sure all wires are firmly fastened.
- If you notice a high level of bass or central image focus, double check your connections for proper polarity.

