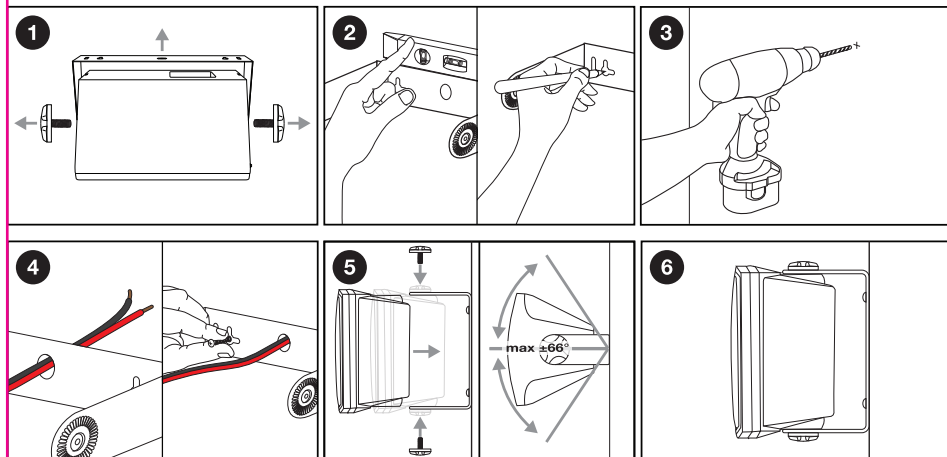


Mounting



1. Remove the bracket knobs and the bracket from the speakers.

2. Hold the bracket up to the mounting surface. These speakers can be mounted horizontally or vertically. Use a level to ensure that the bracket is square with its surroundings. Once the bracket is level, mark the location of the two screw holes. Be sure to use all the screw holes as this will ensure that the bracket is securely attached to the mounting surface. If you are unable to drill into a stud, be sure to use anchors.

3. Remove the bracket and drill holes where your marks are.

4. Gently pull the speaker wire through the large circular hole in the middle of the bracket. Now place the bracket against the mounting surface so that the holes all line up. Use the included hardware to attach the bracket to the mounting surface.

5. Mount the speaker to the bracket and tighten the mounting knobs. Do not tighten completely. Check to make sure the speaker is in phase and functioning correctly. Angle the speaker to desired position.

6. Hand tighten the bracket knobs. Do not use power tools as they may over tighten the knobs and strip the threads of the insert. Double check that the installation is safe and secure.

RockvilleAudio.com

© 2022 ROCKVILLE // Features and specifications are subject to change and or improvement without notice

ROCKVILLE

HP5S/HP5S-8 HP5S BK/HP5S-8 BK

5.25" 420 Watt Outdoor/Indoor Home Theater
Speakers w/Swivel Brackets

OWNER'S MANUAL

ATTENTION:
WATCH THIS VIDEO BEFORE FIRST USE!

Who reads manuals?

Scan the **QR codes** or go to the **URLs** to access how-to video(s), the owner's manual, and other important information you may need to get the most out of your item.

If you prefer written instructions, please read ahead!

With Rockville you get many options.



rockvillesupport.com/hp5s



rockvillesupport.com/hp5s-8



rockvillesupport.com/hp5s-bk



rockvillesupport.com/hp5s-8-bk

Missing items? If you ordered a bundle that includes more than one product and you are missing part of your bundle, then it just means your order shipped from two different warehouses. You will receive the remaining items very soon. If you have any concerns or inquiries, feel free to call our customer support center at 1-646-758-0144, 24 hours a day/7 days a week.

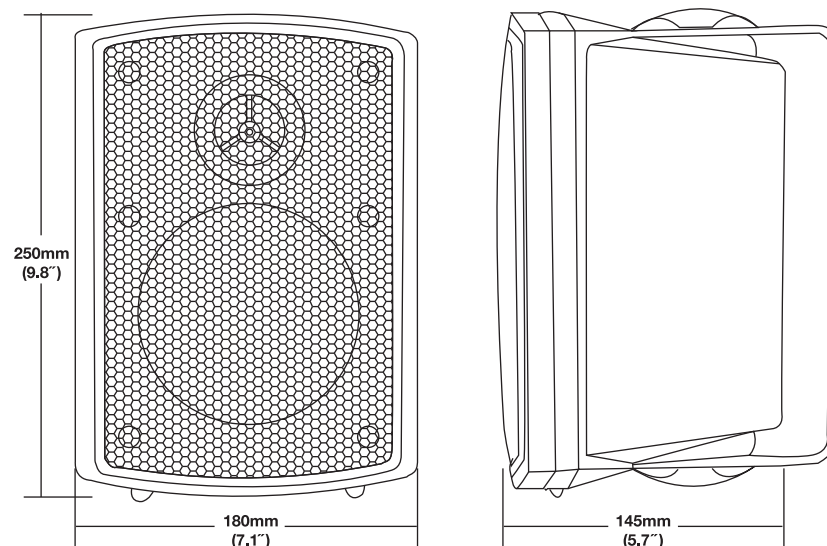
Thank you for purchasing these Rockville HP5S outdoor/indoor home theater speakers. They feature heavy duty ABS construction and can literally be thrown off your roof without getting damaged. With an IP44 (Ingress Protection) rating, you can keep them outdoors in the rain and moisture and they will not get damaged. These speakers are perfect for patios, large backyards, and indoor applications. They're also perfect for use in commercial spaces like gyms, hotels, and more. Each pair puts out 140 watts RMS and 420 watts peak power. These speakers are extremely loud! Rubber surrounds eliminate unwanted distortion and screw-type banana plug terminals make for easy and secure wiring.

Please read this guide carefully for proper use of your HP5S speakers. Should you need assistance, please call our technical help line at 1-646-758-0144, 24 hours a day/7 days a week.

Features/Specifications

- Peak Power Handling: 420 Watts (per pair)
- RMS Power Handling: 140 Watts (per pair)
- Polypropylene Cone
- Rubber Surrounds
- 1" Aluminum Voice Coils
- 5.25" Woofer
- 1/2" Mylar Dome Tweeters
- 10 oz. Ferrite Magnet
- Binding post terminals
- Splash resistant (IP44)
- Tough ABS Construction
- Swiveling Metal Mounting Brackets
- Removable Metal Rustproof Grills
- Built-in Capacitor Crossover Network
- High-Pass filter switch
- Frequency Response: 60Hz – 20KHz
- Sensitivity: 90dB @ 1w/1m
- Impedance: 4 Ohm (HP5S and HP5S BK)
8 Ohm (HP5S-8 and HP5S-8 BK)
- Dimensions (H*W*D): 9.8" x 7.1" x 5.7" (250 x 180 x 145 mm)
- Colors (with paintable grills): White (HP5S and HP5S-8)
Black (HP5S BK and HP5S-8 BK)

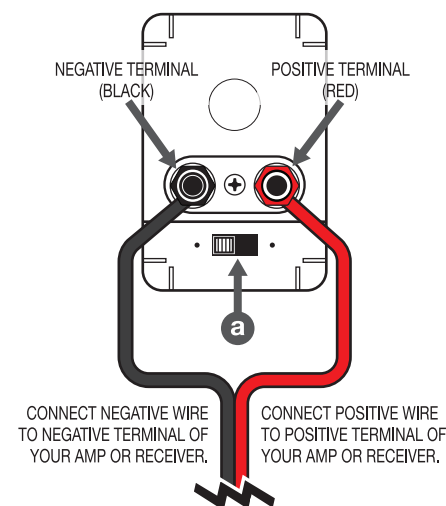
Dimensions



Connecting your Speakers

Connecting the speakers to your amplifier or receiver.

- First turn your amplifier off to avoid damage which may result from accidental shorting of the speaker leads.
- Correct phase polarity is critical for proper stereo imaging and bass performance. The red (+) terminal on your amplifier or receiver must be connected to the red (+) terminal on your speaker, the same applies for the black (-) terminal.
- Connect one loudspeaker at a time to ensure proper connection of left and right channels. Make sure all wires are firmly fastened.
- If you notice a high level of bass or central image focus, double check your connections for proper polarity.



- HP Filter switch (a): This switch activates the high pass filter with a cutoff at 60hz. The high pass filter will take away or attenuate frequencies below the cutoff frequency. This is particularly useful when you have a subwoofer in the set up that is used for the bass frequencies. You can use the HP filter to prevent build up of low frequencies coming from too many speakers. A build up of low frequencies may cause those low frequencies to not sound as clear as they could.