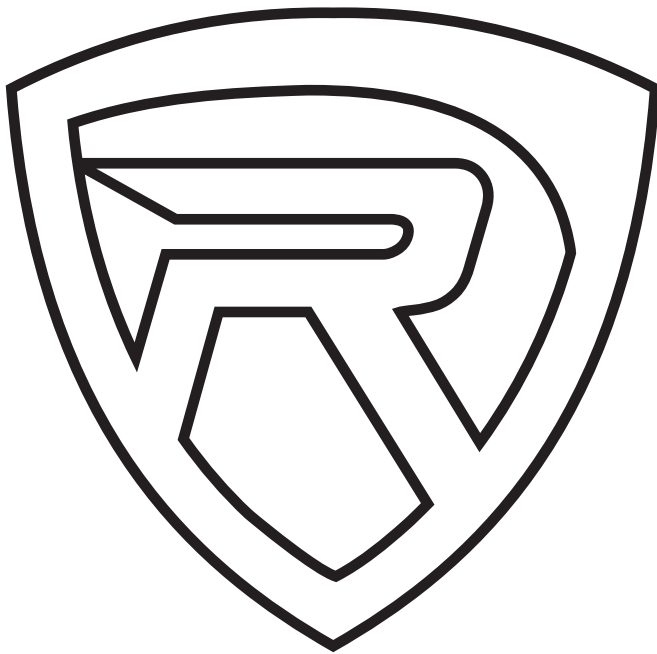


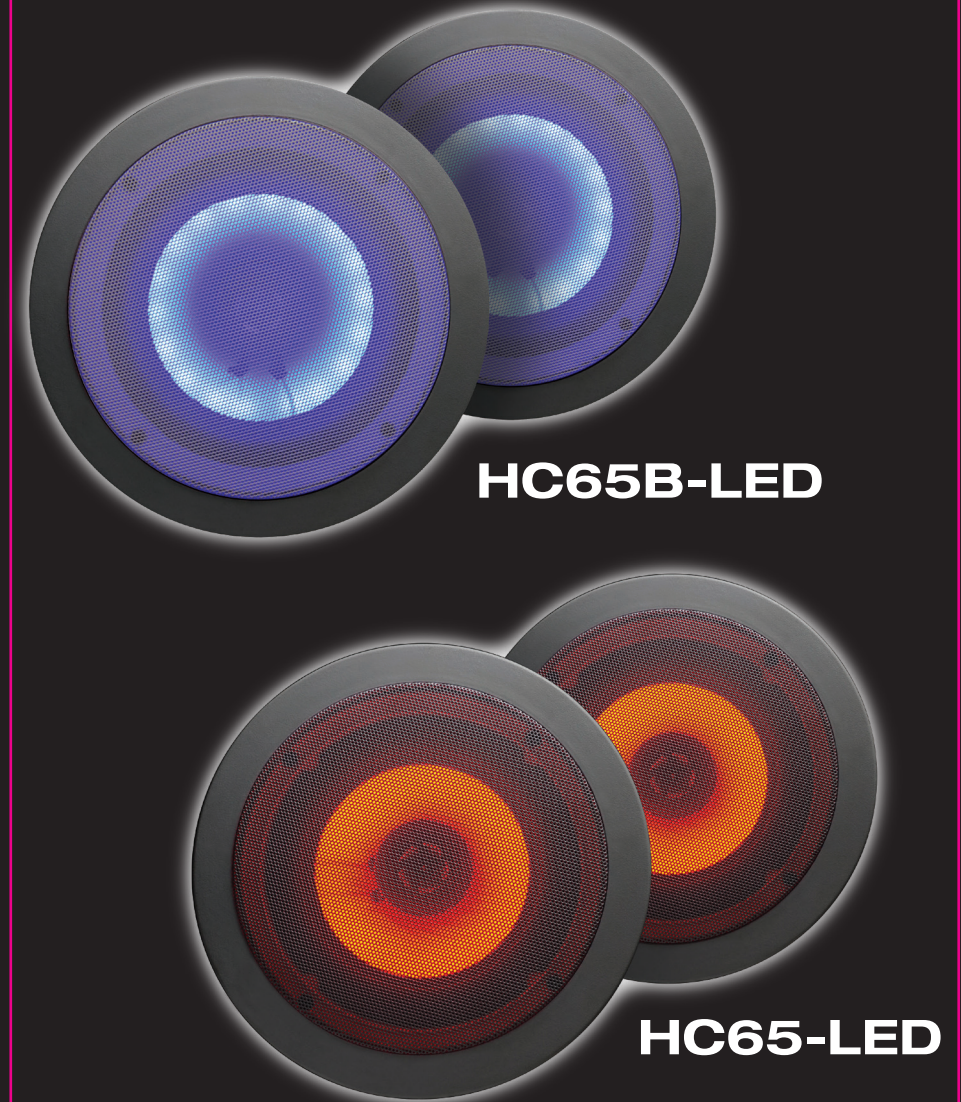
# ROCKVILLE

# ROCKVILLE



**RockvilleAudio.com**

© 2019 ROCKVILLE // Features and specifications are subject to change and or improvement without notice



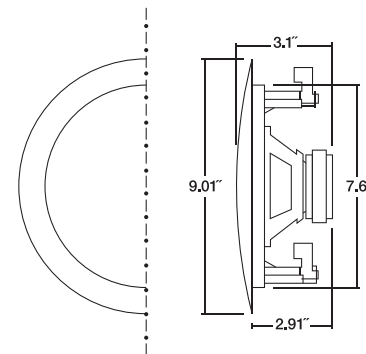
**HC65-LED/HC65B-LED**  
6.5" 500 Watt 2-Way In-Ceiling Home Theater Speakers w/LED

Thank you for purchasing these HC65-LED/HC65B-LED 6.5" speakers with LED lighting. Please read this guide carefully for proper use of your Rockville HC65-LED/HC65B-LED. Should you need technical assistance, please call our technical help line at 1-646-758-0144, Monday through Friday, 9am to 5pm EST.

## Features/Specifications

- Pair of Rockville HC65-LED/HC65B-LED 6.5" White 500 Watt 2-Way In-Ceiling Home Theater Speakers w/LED
- Peak Power: 250 Watts (per speaker)/500 Watts (per pair)
- RMS Power: 80 Watts (per speaker)/160 Watts (per pair)
- Available with Red (HC65-LED) or Blue (HC65B-LED) LED.
- LED requires no extra installation – just regular speaker wire to your amp or receiver
- LED pulsates to the signal of the music or movie (the louder you make it the brighter the LED will go)
- LED lighting combined with yellow Kevlar cone creates a cool color effect
- Kevlar Cone
- Rubber Surround
- 6.5" Woofer
- 1" Aluminum Voice Coil
- ½" Mylar Dome Tweeter
- 10oz. Ferrite Magnet
- High Quality Spring Loaded Push Terminals
- Paintable Flush Mount Grills
- Frequency Response: 60Hz – 20KHz
- Sensitivity: 89dB @ 1w/1m
- Impedance: 8 Ohms
- Mounting Depth: 2.91"
- Cut-out Diameter: 7.6"
- Color: White (paintable)

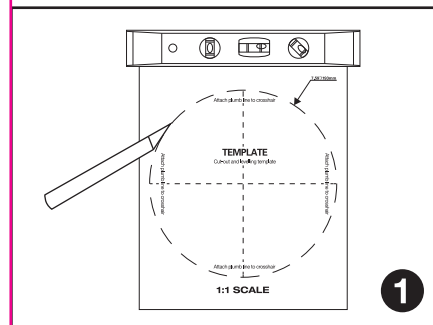
## Dimensions



## Installation

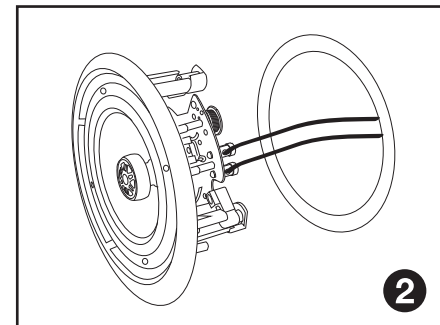
### Tools needed:

- Dry wall knife
- Level
- Phillips head screwdriver

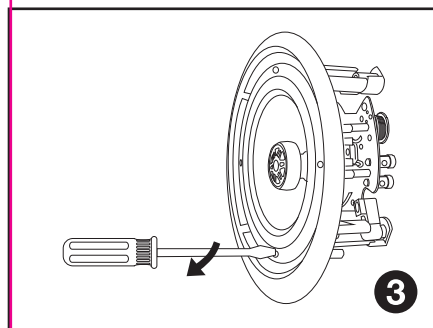


Using the included template, cut an opening in the drywall.

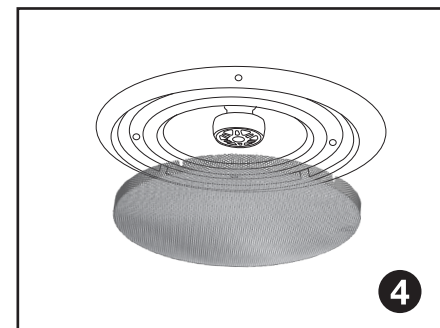
**Note:** Always allow at least ½" between a wall stud and the speaker cutout or the locking tabs will not be able to swivel into place.



Connect the speaker wires.



Screw down each of the four Phillips head screws. The locking tabs will swivel into place and secure the unit to the rear surface of the drywall. Put in the strips of adhesive to secure the grille.



Replace the metal grille.