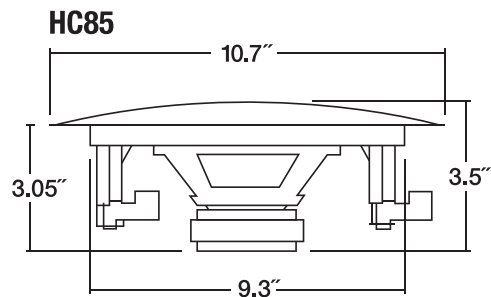
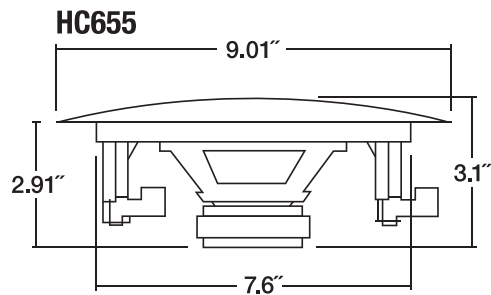
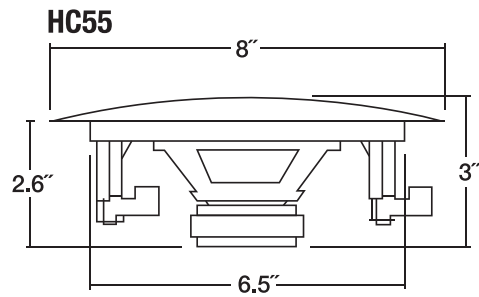


## Dimensions



**RockvilleAudio.com**

© 2022 ROCKVILLE // Features and specifications are subject to change and or improvement without notice

# ROCKVILLE

## HC55

5.25" 8-Ohm 300 Watt 2-Way In-Ceiling Home Theater Speakers

## HC655

6.5" 8-Ohm 500 Watt 2-Way In-Ceiling Home Theater Speakers

## HC85

8" 8-Ohm 700 Watt 2-Way In-Ceiling Home Theater Speakers

### OWNER'S MANUAL

**ATTENTION:  
VISIT THE ROCKVILLE SUPPORT SITE FIRST!**

### *Who reads manuals?*

Scan the **QR code** or go to the **URLs** below to access how-to video(s), the owner's manual, and other important information you may need to get the most out of your item.

**If you prefer written instructions, please read ahead!**

*With Rockville you get many options.*



[rockvillesupport.com/hc55-black](https://rockvillesupport.com/hc55-black)



[rockvillesupport.com/hc55-white](https://rockvillesupport.com/hc55-white)



[rockvillesupport.com/hc655-black](https://rockvillesupport.com/hc655-black)



[rockvillesupport.com/hc655](https://rockvillesupport.com/hc655)



[rockvillesupport.com/hc85-black](https://rockvillesupport.com/hc85-black)



[rockvillesupport.com/hc85](https://rockvillesupport.com/hc85)

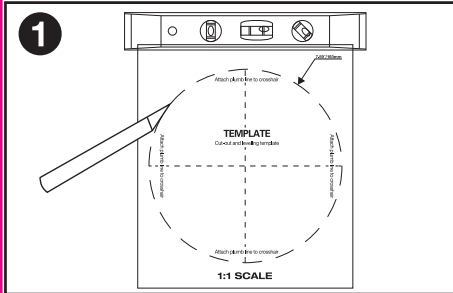
**Missing items?** If you ordered a bundle that includes more than one product and you are missing part of your bundle, then it just means your order shipped from two different warehouses. You will receive the remaining items very soon. If you have any concerns or inquiries, feel free to call our customer support center at 1-646-758-0144, 24 hours a day/7 days a week.

Enjoy superb sound quality with out bulky cabinet speakers crowding the room. These ceiling speakers are precision tuned for excellent audio response at high and low volumes. The HC 8-ohm series feature polypropylene cones for clear, rich mids and deep bass. Rubber surrounds eliminate unwanted distortion so all your music sounds loud and clear. Our Mylar dome tweeter provides clean, crisp highs. The included sheer grills enable flush installation and can be painted to match any décor. Our spring loaded push terminals supply a perfect signal from your amp or receiver. These speakers are perfect for both large and small rooms. For larger rooms you can install 8 or more of them while in smaller rooms 2 or 4 will fill the room. These are perfect for complete home systems where you want to install speakers in multiple rooms.

Please read this guide carefully for proper use of your HC 8-ohm series in-ceiling home theater speakers. Should you need assistance, please call our technical help line at 1-646-758-0144, 24 hours a day/7 days a week.

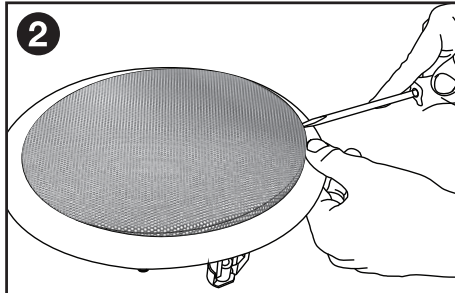
## Installation

**Tools needed:** Dry wall knife, level, Phillips screwdriver, flat head screwdriver

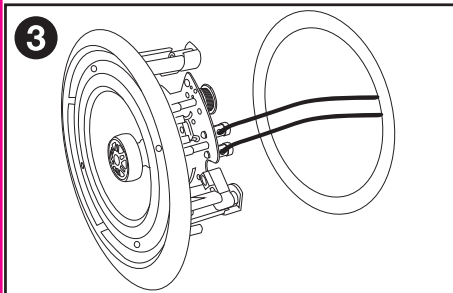


Using the included template, cut an opening in the drywall.

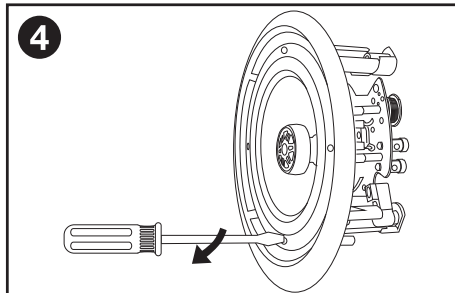
**Note:** Always allow at least 1/2" between a wall stud and the speaker cutout or the locking tabs will not be able to swivel into place.



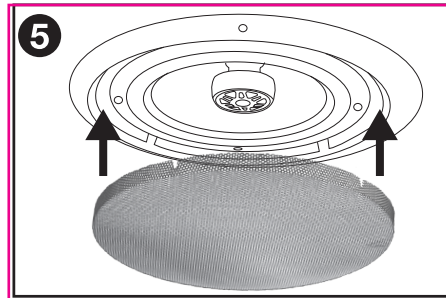
To remove the grille insert a flat head screwdriver into the space between the grill and the inner lip of the speaker housing. Gently lift the grill out being careful not to bend it.



Connect the speaker wires. Be sure to observe proper polarity.



Screw down each of the four Phillips head screws. The locking tabs will swivel into place and secure the unit to the rear surface of the drywall. Put in the strips of adhesive to secure the grille.



Replace the grill by gently pushing it onto the speaker face.

## Features/Specifications

### HC55

- Peak Power Handling: 150 Watts (per speaker) /300 Watts (per pair)
- RMS Power Handling: 60 Watts (per speaker) /120 Watts (per pair)
- Polypropylene Cone
- Rubber Surround
- 5.25" Woofer
- 1" Aluminum Voice Coil
- 1/2" Mylar Dome Tweeter
- 8oz. Ferrite Magnet
- High Quality Spring Loaded Push Terminals
- Paintable Flush Mount Grills
- Frequency Response: 80Hz – 20kHz
- Sensitivity: 88dB @ 1w/1m
- Impedance: 8-Ohm
- Mounting Depth: 2.6"
- Cut-out Diameter: 6.5"
- Color: White or Black (paintable)

### HC85

- Peak Power Handling: 350 Watts (per speaker) /700 Watts (per pair)
- RMS Power Handling: 120 Watts (per speaker) /240 Watts (per pair)
- Polypropylene Cone
- Rubber Surround
- 8" Woofer
- 1" Aluminum Voice Coil
- 1/2" Mylar Dome Tweeter
- 20oz. Ferrite Magnet
- High Quality Spring Loaded Push Terminals
- Paintable Flush Mount Grills
- Frequency Response: 40Hz – 20kHz
- Sensitivity: 89dB @ 1w/1m
- Impedance: 8-Ohm
- Mounting Depth: 3.03"
- Cut-out Diameter: 9.3"
- Color: White or Black (paintable)

### HC655

- Peak Power Handling: 250 Watts (per speaker) /500 Watts (per pair)
- RMS Power Handling: 80 Watts (per speaker) /160 Watts (per pair)
- Polypropylene Cone
- Rubber Surround
- 6.5" Woofer
- 1" Aluminum Voice Coil
- 1/2" Mylar Dome Tweeter
- 10oz. Ferrite Magnet
- High Quality Spring Loaded Push Terminals
- Paintable Flush Mount Grills
- Frequency Response: 60Hz – 20kHz
- Sensitivity: 89dB @ 1w/1m
- Impedance: 8-Ohm
- Mounting Depth: 2.91"
- Cut-out Diameter: 7.6"
- Color: White or Black (paintable)