

ROCKVILLE

ELITE-5W/ELITE-5B/ELITE-5C

**5.25" POWERED BOOKSHELF
SPEAKERS w/BLUETOOTH**

OWNER'S MANUAL

**ATTENTION:
WATCH THIS VIDEO BEFORE FIRST USE!**

Who reads manuals?

Scan the **QR code** or go to the **URLs** to access how-to video(s), the owner's manual, and other important information you may need to get the most out of your item.

If you prefer written instructions, please read ahead!

With Rockville you get many options.



rockvillesupport.com/elite-5w



rockvillesupport.com/elite-5b



rockvillesupport.com/elite-5c

Missing items? If you ordered a bundle that includes more than one product and you are missing part of your bundle then it just means your order shipped from two different warehouses. You will receive the remaining items very soon. If you have any concerns or inquiries, feel free to call our customer support center at 1-646-758-0144, 24 hours a day/7 days a week.

רוקמילר

Thank you for purchasing this Rockville ELITE-5 5.25" Powered Bookshelf Speaker with Bluetooth. Please read this installation guide carefully for proper use of your ELITE-5. Should you need assistance, please call our technical help line at 1-646-758-0144, 24 hours a day/7 days a week.

Included

- Pair of speakers (one active and one passive)
- Remote control
- Cable to connect the active speaker to the passive one
- 3.5mm to RCA AUX cable to connect the speakers to a computer, laptop, etc.
- Easy to follow training video teaching you how to use the item
- Warranty card
- Power cable

IMPORTANT SAFETY INSTRUCTIONS

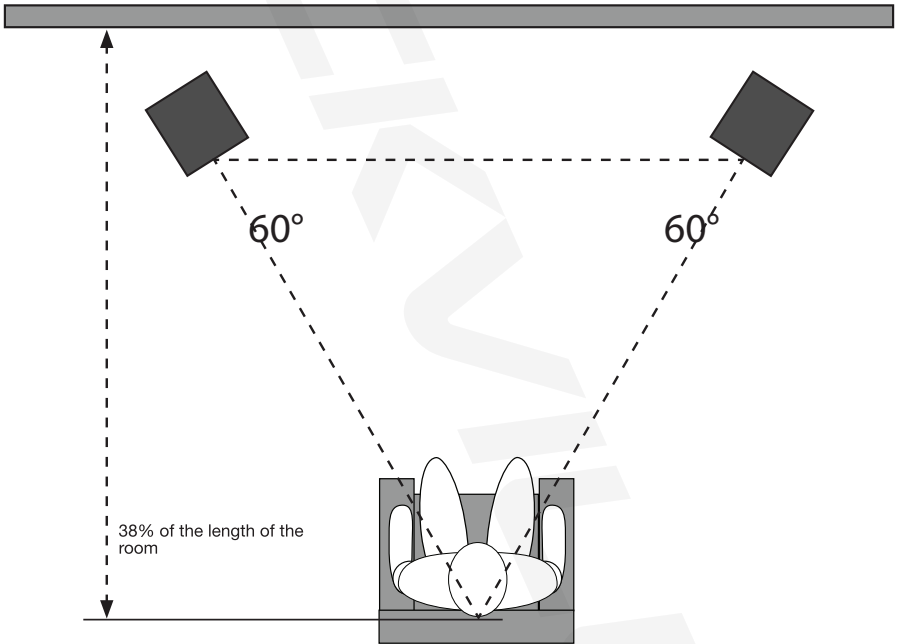


TO REDUCE THE RISK OF ELECTRICAL SHOCK, DO NOT REMOVE AMPLIFIER PLATE. THERE ARE NO SERVICEABLE PARTS INSIDE. REFER SERVICE TO THE ROCKVILLE SERVICE CENTER.

- Do not place this speaker on an unstable cart, stand, bracket or table. The speaker may fall, causing serious injury to a child or adult and serious damage to the unit.
- Do not use this speaker near water; for example, near a bathtub, sink, in a wet basement, or near a swimming pool.
- The speaker should be situated away from heat sources such as radiators, heat registers, stoves, or other devices that produce heat.
- This speaker should be connected to a power supply outlet of the same voltage as that which is specified on the amp plate of the unit. Protect the power cord from being walked on or pinched, particularly at plugs, convenience receptacles, and the point where it exits from the unit.
- Clean only with a soft damp cloth. Unplug this product from the wall outlet before cleaning.

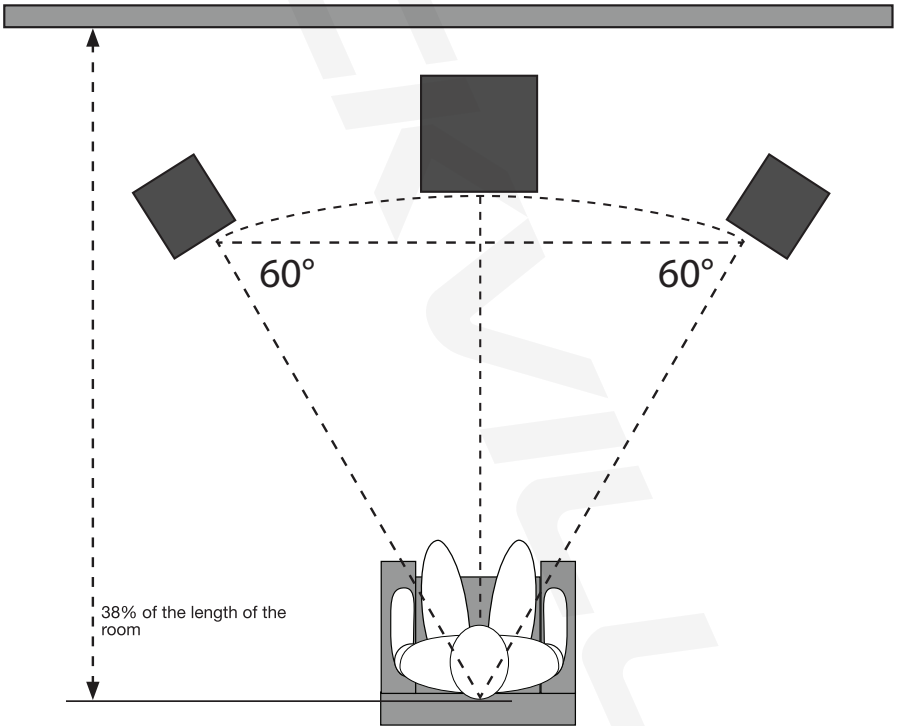
Positioning

Placing the speakers close to a wall or in a corner will reinforce low frequencies. If you move them 2 to 3 feet from walls and corners, you'll hear less low frequency interaction. The speakers should be placed so that the listening position is fully covered with both units resting on the same horizontal plane. Measure out a simple equilateral triangle (all three sides equal in length) with the apex at the center of the listening position (as shown below). In this configuration, the left and right speakers are each placed at a 60° angle, equidistant from the listening position. For testing and break-in we recommend acoustical music as it represents a wide, natural spectrum of sound.

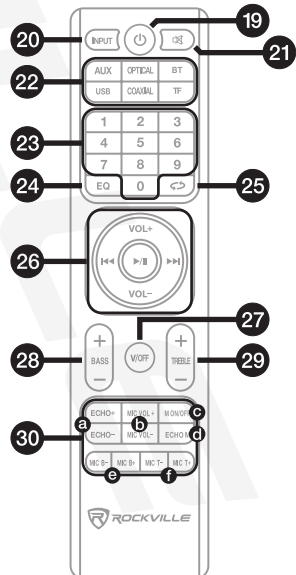
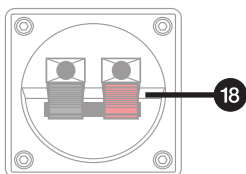
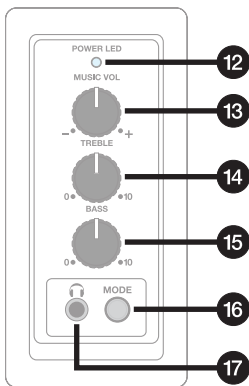
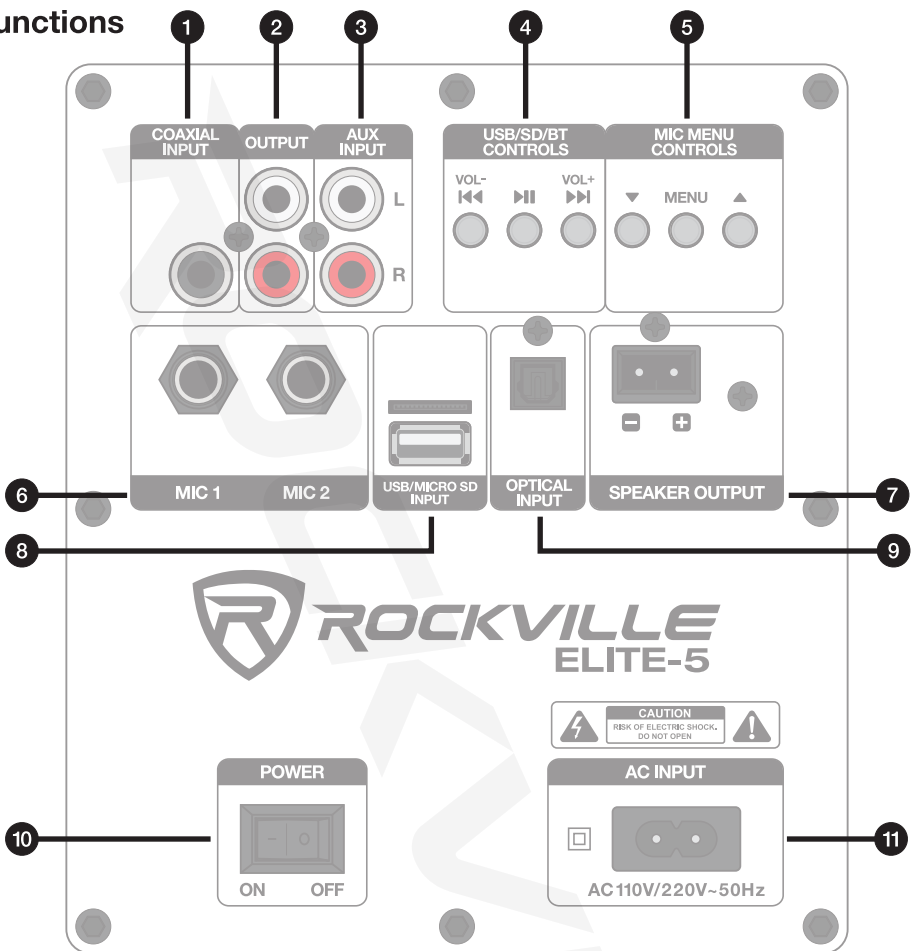


Subwoofer Placement (Optional)

Placement is for the most part a trial and error process and differs depending on the shape and size of the room. Use the diagram below as a general starting point for placement. Begin by placing the sub on the floor in front of the listening position. Be sure to place it centered between the monitors. Then try different locations through out the room until you find a location that suits your needs. If possible, place the subwoofer in a corner as this will provide you with lower distortion, increased headroom, and increased efficiency.

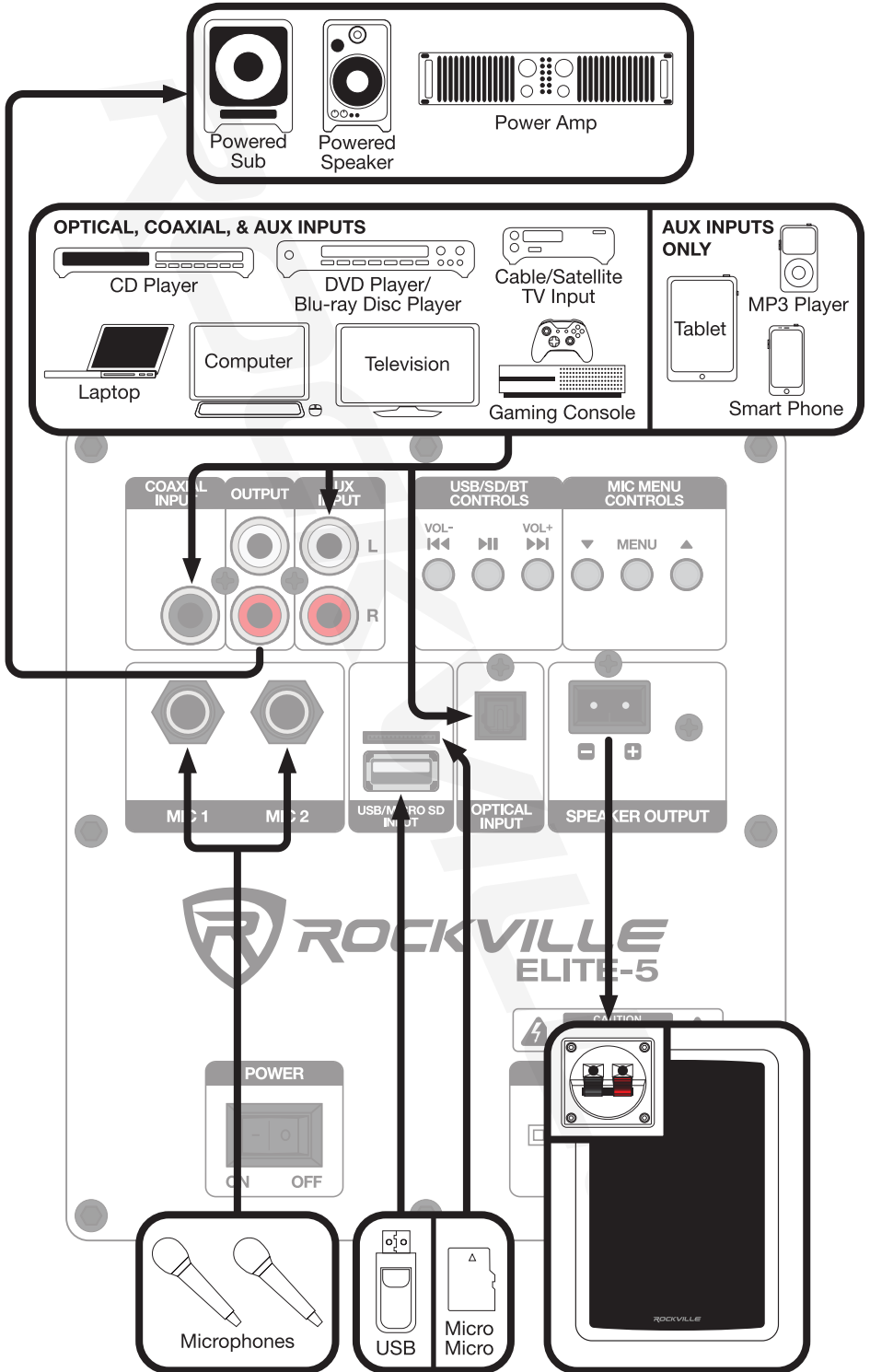


Functions



1. Coaxial input
2. RCA outputs
3. AUX RCA inputs
4. USB/SD/Bluetooth playback controls
5. Microphone control panel
6. ¼" microphone inputs
7. Output to passive speaker
8. USB/Micro SD inputs
9. Optical input
10. Power switch
11. AC input port
12. Power indicator LED
13. Volume control
14. Treble control
15. Bass control
16. Mode button: Select input source
17. 3.5mm headphone output
18. Passive speaker's spring loaded wire terminals
19. Power button
20. Input button: Select input source
21. Mute
22. Input buttons: Directly select input source
23. Number pad: Used in BT, USB, and SD mode to select tracks
24. EQ: press to select preset EQ curves
25. Repeat button
26. Playback controls: Play/Pause, Previous/Next, Volume up/Volume down
27. V OFF: press to turn off voice prompts
28. Bass control button
29. Treble control button
30. Mic control buttons
 - a. Echo +/-
 - b. Mic volume +/-
 - c. Mic priority ON/OFF
 - d. Echo Menu (see page 10)
 - e. Mic bass +/-
 - f. Mic treble +/-

Inputs and Outputs



Bluetooth

Pairing

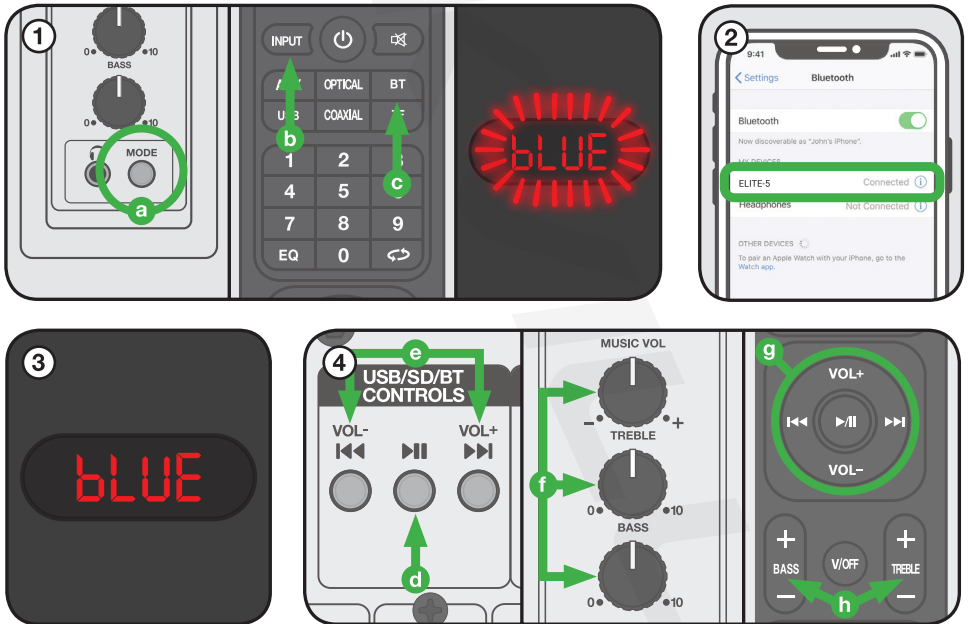
To connect your iPhone, iPod, MP3 player, Android phone, or any other Bluetooth-capable device, follow the steps listed below.

1. Power on the speaker and the unit will automatically go into pairing mode. If not, press the MODE button on the side of the speaker (a) or the INPUT button (b) on the remote control (you can also press the BT button)(c) to get to Bluetooth mode. The word “bLUE” will be flashing on the LCD screen indicating that the unit is in pairing mode.

2. Go to your phone’s or other device’s Bluetooth interface and select “ELITE-5” from the list of available devices.

3. If connection is successful, the word “bLUE” will stop flashing and remain solid, indicating that there is a Bluetooth connection established.

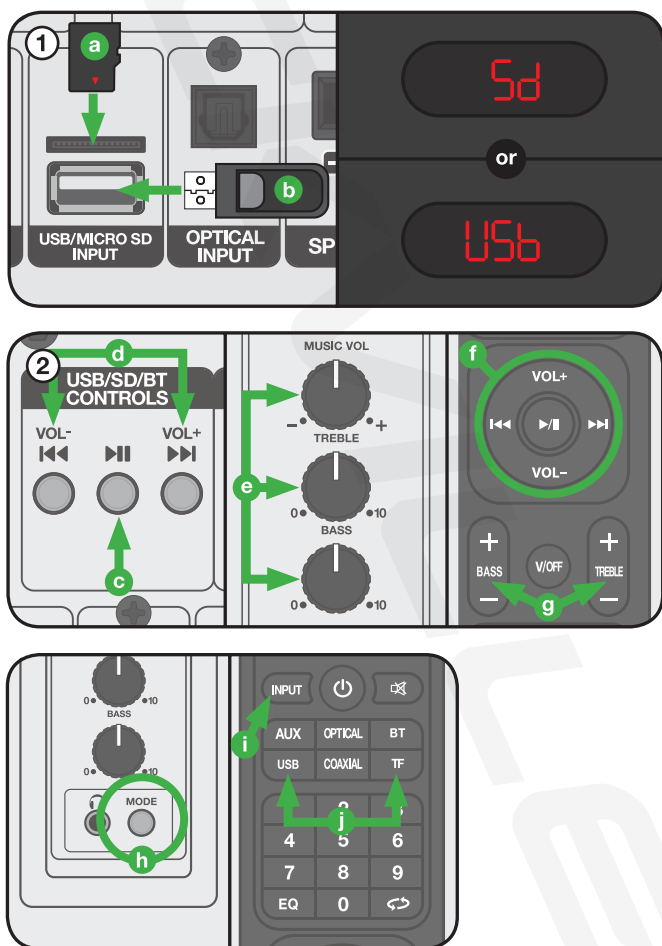
4. Press the Play/Pause (d) button on the USB/SD/BT controls to pause or resume music playback. Use the Previous (VOL-)/Next (VOL+) keys (e) to select tracks or press and hold to adjust volume. Use the Music Volume, Treble, and Bass knobs on the side of the speaker (f) to adjust the overall output level and sound quality. You can use the remote control (refer to the remote control functions section) to play/pause, navigate tracks, adjust the volume (g), and sound quality (h). Finally, you can use your Bluetooth device to play/pause, navigate tracks, and adjust the volume.



USB/SD Input

This unit features USB and micro SD card inputs allowing you to play music from either type of storage device (up to 128GB). The files must be in one of the following formats: MP3, WAV, or WMA.

1. Insert a micro SD card into the card slot (a) or connect a USB drive to (b). The words “USB” or “SD” will appear on the screen accordingly. The unit will automatically recognize the input device and begin to play music.
2. Press the Play/Pause (c) button on the USB/SD/BT controls to pause or resume music playback. Use the Previous (VOL-)/Next (VOL+) keys (d) to select tracks or press and hold to adjust volume. Use the Music Volume, Treble, and Bass knobs on the side of the speaker (e) to adjust the overall output level and sound quality. You can use the remote control (refer to the remote control functions section) to play/pause, navigate tracks, adjust the volume (f), or sound quality (g).
3. If you switch to a different mode during USB or micro SD playback, you can switch back to USB/SD mode by using the MODE button (h) on the side of the speaker. You can also press the input button (i) on the remote control, or press the SD or USB buttons (j) on the remote control.

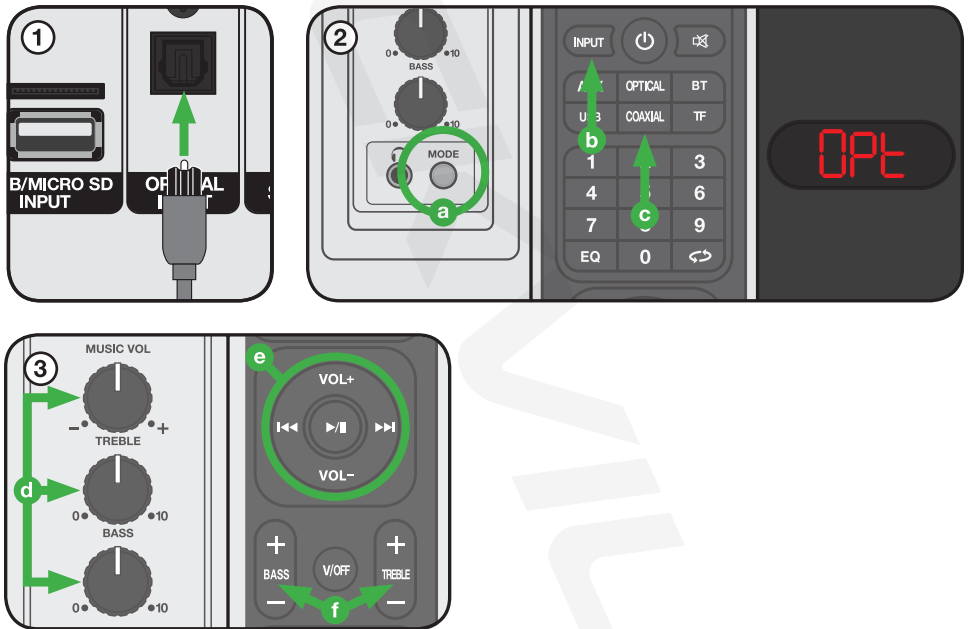


! If the unit is powered on and in another input mode, connecting a USB drive or an micro SD card will override the current mode and automatically switch to USB or SD mode.

Optical input

Many TVs, digital set-top boxes, game consoles, and DVD players have optical (fiber optic) outputs. To connect via Optical input, follow the steps listed below.

1. Use a digital optical audio cable to connect the ELITE powered speaker to the sound source. If you are using a TV, go into your TV's audio settings and make sure to deactivate Dolby Pro Logic, Dolby ATMOS, etc. and select PCM format.
2. Power on the sound source and the speaker. Press the MODE button (a) on the side of the speaker or the INPUT button (b) on the remote control. You can also press the OPTICAL button (c) on the remote. The LCD display will show the word "OPT".
3. Use the Music Volume, Treble, and Bass knobs on the side of the speaker (d) to adjust the overall output level and sound quality. You can use the remote control (refer to the remote control functions section) to play/pause, navigate tracks, adjust the volume (e), or sound quality (f).



Mic Controls

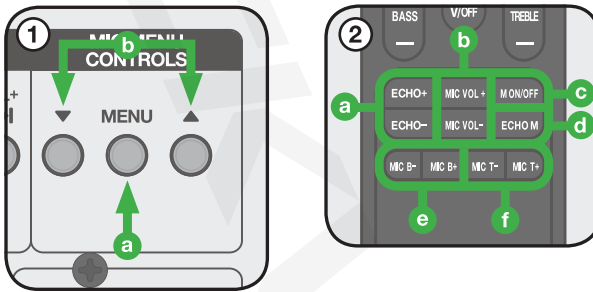
You can customize the sound of the output from the wired mics by using the Mic Menu Controls on the back of the speaker or via the remote control.

1. Mic Menu Controls

Press the MENU button (a) to access the menu options. Continue pressing the MENU button to cycle through the options (see the chart below). Use the DOWN/UP buttons (b) to adjust the desired effect's settings.

2. Remote Control

- ECHO +/ECHO - (a): Used to adjust the amount of echo effect applied.
- MIC VOL+/MIC VOL- (b): Used to adjust the mic volume.
- M ON/OFF (c): Toggles the mic priority feature on or off.
- ECHO TIME (d): Pressing this button on the remote adjusts the intervals of echo time by 5. If you wish to make more precise adjustments (in single increments), use the MIC MENU CONTROLS on the unit.
- MIC B+/MIC B- (e): Used to adjust mic output bass.
- MIC T+/MIC T- (f): Used to adjust mic output treble.



Mic Menu Options

DESCRIPTION	DISPLAY MODE	VALUE
Mic treble	t	-7 - +7
Mic bass	b	-7 - +7
Mic echo level	E	0 - 16
Mic echo time	d	0 - 30
Mic volume	□□	0 - 16

Features

- 800 Watts Peak/200 Watts RMS
- Built-in Digital class “D” amplifier with advanced digital sound processing
- Extremely loud with clean and defined bass response and an overall balanced and pleasant sound curve
- Rear port enhances low bass frequencies
- Silk-dome tweeter produces crystal clear highs
- Bass and treble knobs
- Adjustable preset EQ curves
- Built-in Bluetooth 5.0 with 40 foot range and low latency
- Built-in USB playback (up to 128GB)
- Memory card playback (Micro SD, up to 128GB)
- Optical input (PCM)
- Coaxial input
- Two ¼” Mic inputs with echo and mic volume control
- Mic EQ (mic bass and mic treble control)
- RCA AUX input
- RCA AUX output
- 5.25” 4 ohm Woofer with 25mm voice coils
- 0.5” MDF cabinet
- Front LED display
- Cabinet has rounded edges and a beveled grill
- Detachable grill
- Available colors: Black, White, Classic Wood
- Frequency Response: 45Hz – 20kHz
- Includes remote with 20 foot range
- Input power: 110V-220V

Troubleshooting

PROBLEM	SOLUTION
No power	<ol style="list-style-type: none">1. Make sure the unit is receiving power.2. Check the power cord for any damage.3. Make sure the input voltage matches that of the unit.4. Check power switch on back.5. Try pressing power button on remote if unit was powered off or placed on standby via the remote
No sound/ distorted sound	<ol style="list-style-type: none">1. Check that all appropriate cables are plugged in correctly.2. Check the volume settings of the speaker and all input sources.3. Make sure the microphone(s) is on.4. Make sure that input devices are operating properly.
Buzzing sound	Make sure you are using the appropriate cable for the type of input. For mic input use ¼" TS cable. For optical input, use a high quality digital optical audio cable.
Mic feedback	Point the mics away from the speaker. Make sure the mics are behind the speaker, not in front of it.
Poor mic sound	<ol style="list-style-type: none">1. Make sure you are using the appropriate type of cable.2. Ensure your mics are operating properly.3. Adjust mic EQ for mic tonality.
Bluetooth pairing fails	<ol style="list-style-type: none">1. Check to see that both devices are turned on and that your Bluetooth device is discoverable.2. Turn both devices off and then on again.3. Make sure the speaker is set to Bluetooth input mode.4. Make sure that the Bluetooth device is within 5 feet of the unit.5. Move both devices away from other Bluetooth devices, microwaves, wireless routers, and other electronics.6. Make sure that the unit is not paired to a previously paired device.
No SD or USB playback	<ol style="list-style-type: none">1. Make sure you are in USB/SD mode.2. Make sure the micro SD card or USB drive is properly connected.3. Make sure that the audio files are in the specified format (see page 8).4. Make sure the capacity of the USB drive or micro SD card does not exceed 128GB.5. Make sure the micro SD card/USB drive is not damaged.

FEDERAL COMMUNICATIONS COMMISSION COMPLIANCE INFORMATION

Responsible party name: Rockville

Address: 600 Bayview Ave,
Entrance A,
Inwood, NY 11096

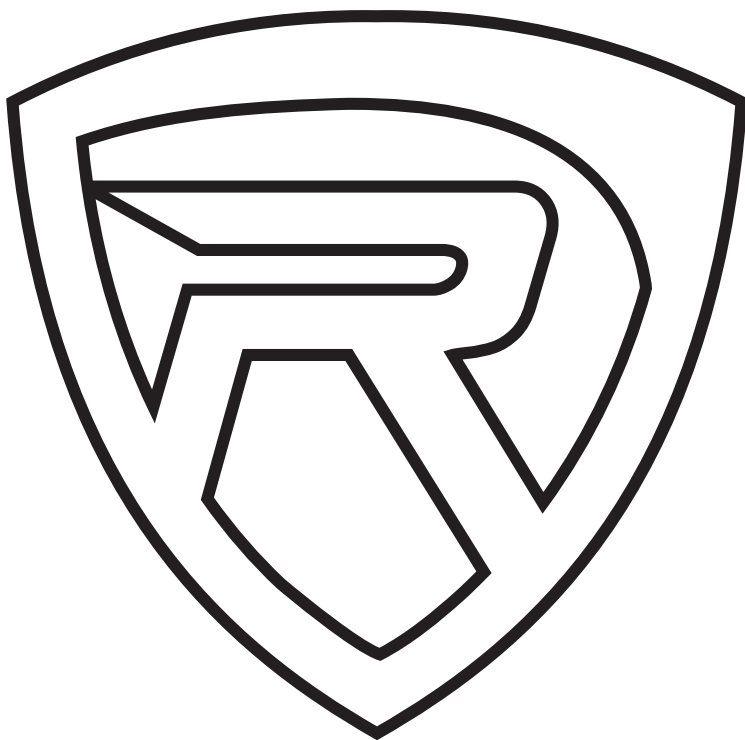
Hereby declares that the product Rockville ELITE-5 complies with FCC rules as mentioned in the following paragraph:

This device complies with Part 15 of the FCC rules. Operation is subject to the following two conditions: (1) this device may not cause harmful interference, and (2) this device must accept any interference received, including interference that may cause undesired operation.

Note: This equipment has been tested and found to comply with the limits for a Class B digital device, pursuant to Part 15 of the FCC rules. These limits are designed to provide reasonable protection against harmful interference in a residential installation. This equipment generates, uses and can radiate radio frequency energy and, if not installed and used in accordance with the instructions, may cause harmful interference to radio communications. However, there is no guarantee that interference will not occur in a particular installation. If this equipment does cause harmful interference to radio or television reception, which can be determined by turning the equipment off and on, the user is encouraged to try to correct the interference by one or more of the following measures:

- Reorient or relocate the receiving antenna.
- Increase the separation between the equipment and receiver.
- Connect the equipment to an outlet on a circuit different from that to which the receiver is connected.
- Consult the dealer or an experienced radio/TV technician for help.

ROCKVILLE



RockvilleAudio.com

© 2022 ROCKVILLE // Features and specifications are subject to change and/or improvement without notice.