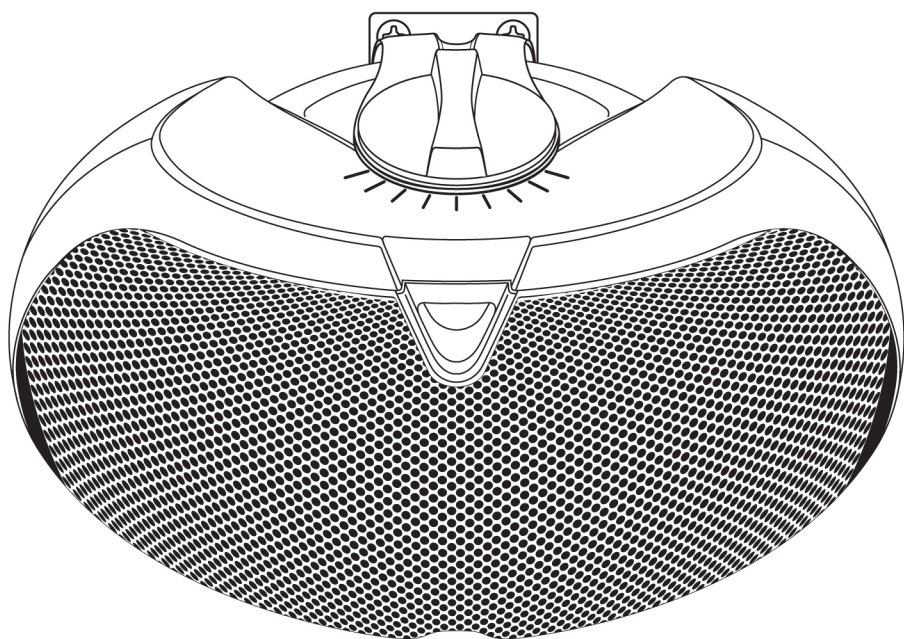


ROCKVILLE



OWNER'S MANUAL

D4-8

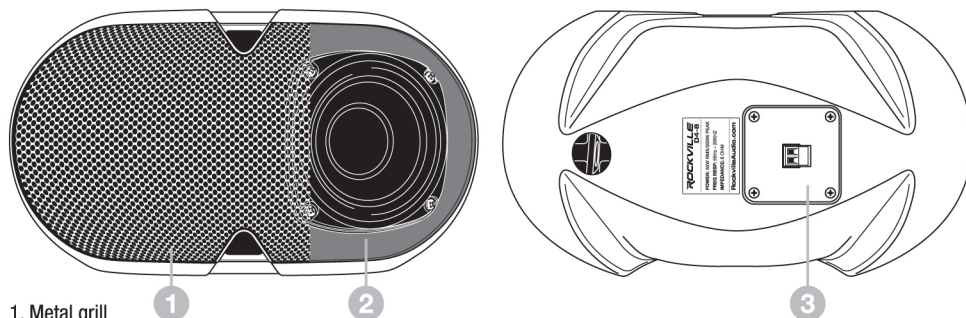
4" 8-Ohm Commercial/Restaurant Wall Mount Speakers

D4-16

4" 16-Ohm Commercial/Restaurant Wall Mount Speakers

Rockville D4-8 and D4-16 are 8 ohm and 16 ohm commercial wall mount speakers. They are a great choice for any restaurant, office, school, retail store, or other commercial application. These speakers will sound great for all your PA announcements and background music. Please read this guide carefully for proper use of your D4-8 or D4-16 speakers. Should you need assistance, please call our technical help line at 1-646-758-0144, Monday through Friday, 9am to 5pm EST.

Functions



1. Metal grill
2. Full range speaker
3. European-style terminal block (euroblock)

Connecting the Speakers

These speakers are passive and thus require an amplifier or receiver to give them power. They can be connected to any 4 or 8 ohm amplifier. If your speakers are relatively close to the signal source (50 feet or less), 16 gauge wire can be used. For longer distances, 12 or 14 gauge wire is recommended. Be sure to observe proper polarity by ensuring that the wire from the positive speaker terminal is connected to the red or positive terminal of the signal source and that the wire from the negative speaker terminal is connected to the black or negative terminal of the signal source.

Features/Specifications

- Weather resistant with rugged ABS cabinet is perfect for outdoor patio or indoor use
- Curved cabinet design for better sound coverage with an 80° x 120° dispersion
- Dual swivel mounting bracket supports vertical 90° swivel and horizontal 100° swivel
- Polypropylene Cone
- Rubber Surround
- (2) 4" Woofers
- 1" Kapton Voice Coil
- 1" Soft Silk Dome Tweeter
- 9.75 oz. Ferrite Magnets
- Detachable Euro-Block terminals with quick disconnect
- Built in 12dB/Octave crossover with dynamic speaker protector
- Crossover details: 2nd order/2500Hz rolloff
- Impedance: Available in 8 ohm or 16 ohm
- Frequency Response: 55Hz – 20KHz
- Sensitivity: 88dB @ 1w/1m
- Available in black or white
- Dimensions in inches: 12.05" x 6.6" x 8.7"
- Weight: 6.4 Lbs

RockvilleAudio.com

© 2020 ROCKVILLE // Features and specifications are subject to change and or improvement without notice

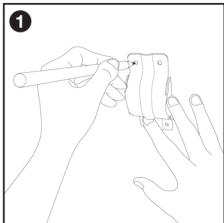
ROCKVILLE D4 WALL INSTALLATION PROCESS

Pg. 1

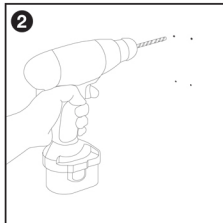


Go to vimeo.com/560964339 or scan the QR code and watch a short video that shows you how to install and adjust the D4's wall mount bracket.

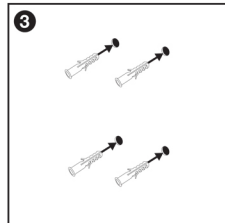
Should you need further assistance, please call our technical help line at 1-646-758-0144, Monday through Thursday, 9am to 10pm EST, and Fridays, 9:00am to 3pm EST.



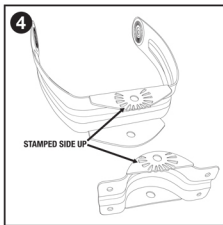
Using the mounting bracket as a template, mark the mounting screw locations.



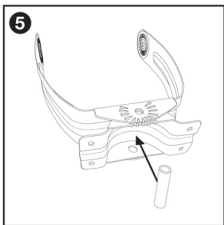
Drill pilot holes for the screws. Be sure to use the proper drill bit size for the anchors. We recommend using a 7/32" drill bit.



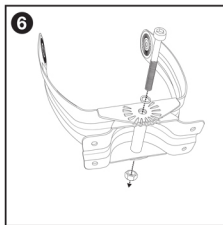
Insert one of the included anchors into each hole. Do not mount the bracket yet.



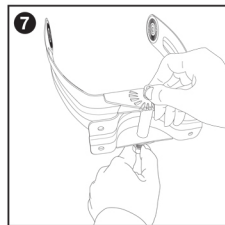
Slide the mounting bracket into the speaker bracket as shown above. Make sure the stamped side of the bracket, as well as that of the mount, is facing down.



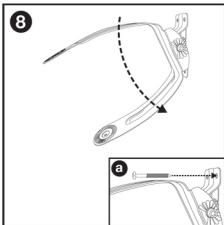
Insert the hex bolt sleeve.



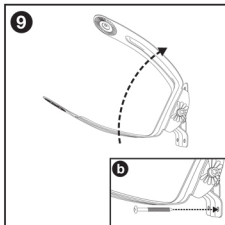
Align the bracket screw hole with that of the mount and the hex bolt sleeve. Slide the locking washer onto the hex bolt and insert the bolt assembly into the hole.



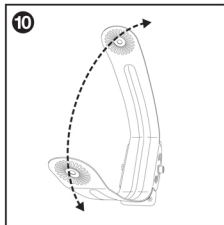
Attach the nut onto the hex bolt and hand tighten, but do not fully tighten.



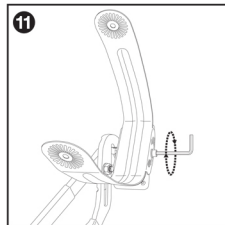
Place the entire bracket assembly against the wall and align the mounting bracket's screw holes with the anchors. Tilt the wall bracket down in order to expose the two top holes. Insert one screw in each hole. We recommend using a power tool in order to firmly drive the screws into the wall anchors.



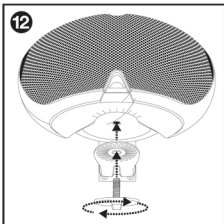
Tilt the wall bracket up to expose the two bottom holes. Insert one screw in each hole and firmly drive the screws into the wall anchors.



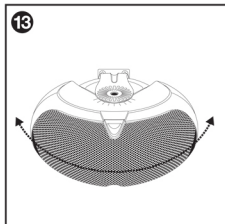
Prior to mounting the speaker to the wall bracket, set the desired angle at which your speaker will be mounted.



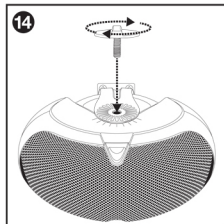
To set the bracket position, hold the nut on the stamped side with a pair of pliers or an adjustable wrench and use the Allen wrench to tighten the hex bolt until it feels solid. Do not be afraid to overtighten.



Put the speaker in place and insert the bottom tightening screw first. Do not fully tighten.



Adjust the speaker to the desired angle.



Insert an fully tighten the top screw. Fully tighten the bottom screw. Now, enjoy the music!