

# ROCKVILLE

## BluTube Series

70W TUBE AMPLIFIERS/HOME STEREO  
RECEIVERS w/BLEETOOTH

### OWNER'S MANUAL

## WHO READS MANUALS?

Instead, go to [vimeo.com/511805076](https://vimeo.com/511805076) or scan the QR code and watch a short video that shows you how to set this item up and how to use it.

**If you prefer written instructions, please read ahead!**

*With Rockville you get many options.*



**Missing items?** If you ordered a bundle that includes more than one product and you are missing part of your bundle, then it just means your order shipped from two different warehouses. You will receive the remaining items very soon. If you have any concerns or inquiries, feel free to call our customer support center at 1-646-758-0144, Monday through Thursday, 9am to 10pm EST, and Fridays, 9am to 3pm EST.

Thank you for purchasing this Rockville BluTube Series 70W Tube Amplifier w/Bluetooth. Please read this owner's manual carefully for proper use of your Rockville BluTube. Should you need assistance, please call our technical help line at 1-646-758-0144, Monday through Thursday, 9am to 10pm EST, and Fridays, 9am to 3pm EST.

## Includes

- Tube Amplifier/Receiver
- 5 ft RCA to 3.5mm cable
- Owner's manual
- Warranty card

**! PLEASE NOTE:** You may hear a humming noise when the BluTube unit is first powered on. This is normal and is due to the tubes warming up. The humming noise will go away after approximately 1 minute.

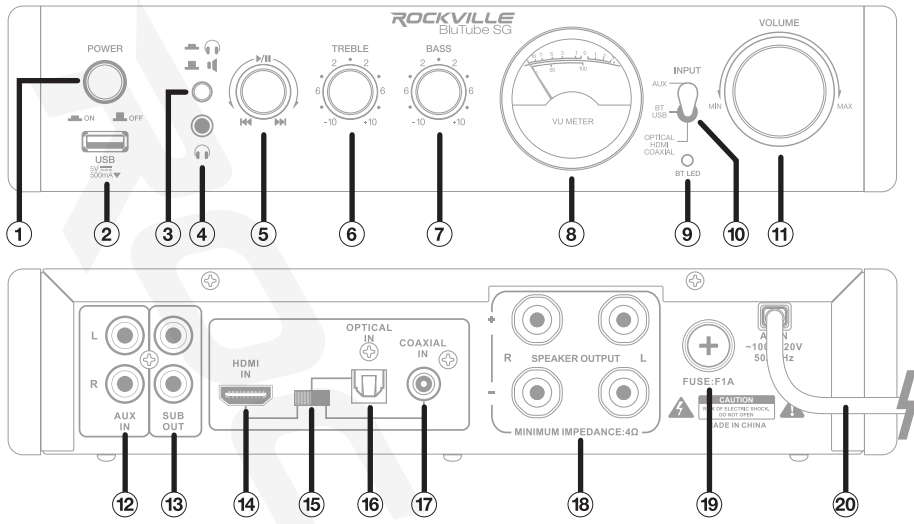
## IMPORTANT SAFETY INSTRUCTIONS



- To reduce risk of electric shock, never open the unit. There are no user serviceable parts, refer service to an authorized Rockville service center.
- Do not expose this unit to any kind of moisture. No objects filled with liquids, such as vases or cups, should be placed on or near this appliance.
- Please ensure that the unit is situated in a properly ventilated area.
- Avoid direct sunlight or heat radiating appliances.
- Avoid placing on surfaces that are subject to constant vibration.
- Make sure the unit is placed on a level and stable surface.
- No open flames, such as a lit candles, should be placed on or near the unit.
- Before turning on the power for the first time, make sure the power cord is properly plugged in and fully uncoiled.

# Functions

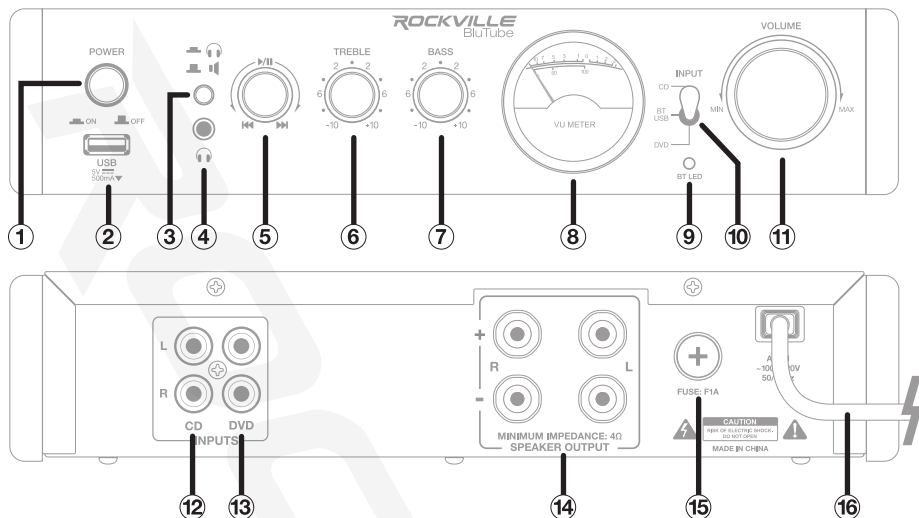
## BluTube SG, BluTube WD, and BluTube LED



- 1. Power switch
- PLEASE NOTE: You may hear a humming noise when the BluTube unit is first powered on. This is normal and is due to the tubes warming up. The humming noise will go away after approximately 1 minute.**
- 2. USB port (supports charging)
- 3. Speaker output/3.5mm headphone output selector button
- 4. 3.5mm headphone output
- 5. Play/pause - Previous/next control knob
- 6. Treble adjustment knob
- 7. Bass adjustment knob
- 8. VU meter: displays input signal level
- 9. Bluetooth LED indicator
- 10. Input selector switch
- 11. Volume knob
- 12. Auxiliary Input RCA jacks
- 13. Subwoofer Output RCA jacks
- 14. HDMI input
- 15. HDMI/Optical/Coaxial input selector switch
- 16. Optical input
- 17. Coaxial input
- 18. Left and Right banana plug/binding post speaker terminals
- 19. Fuse
- 20. Power cord

## Functions (continued)

### BluTube



#### 1. Power switch

**PLEASE NOTE:** You may hear a humming noise when the BluTube unit is first powered on. This is normal and is due to the tubes warming up. The humming noise will go away after approximately 1 minute.

#### 2. USB port (supports charging)

#### 3. Speaker output/3.5mm headphone output selector button

#### 4. 3.5mm headphone output

#### 5. Play/pause - Previous/next control knob

#### 6. Treble adjustment knob

#### 7. Bass adjustment knob

#### 8. VU meter: displays input signal level

#### 9. Bluetooth LED indicator

#### 10. Input selector switch

#### 11. Volume knob

#### 12. CD Input RCA jacks

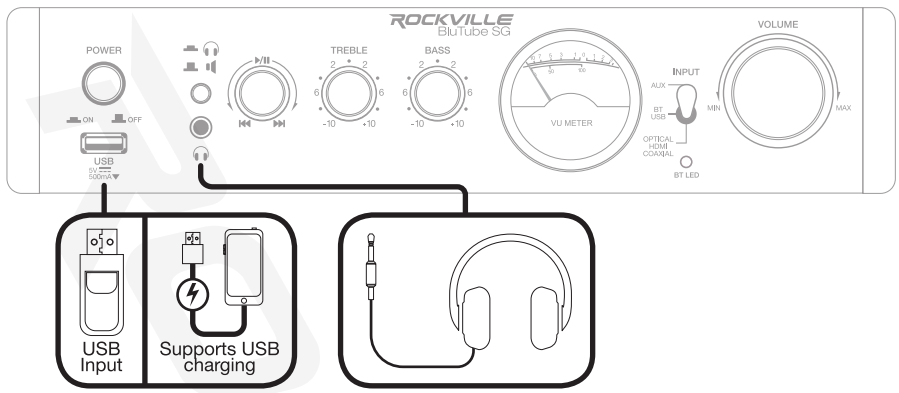
#### 13. DVD Input RCA jacks

#### 14. Left and Right banana plug/binding post speaker terminals

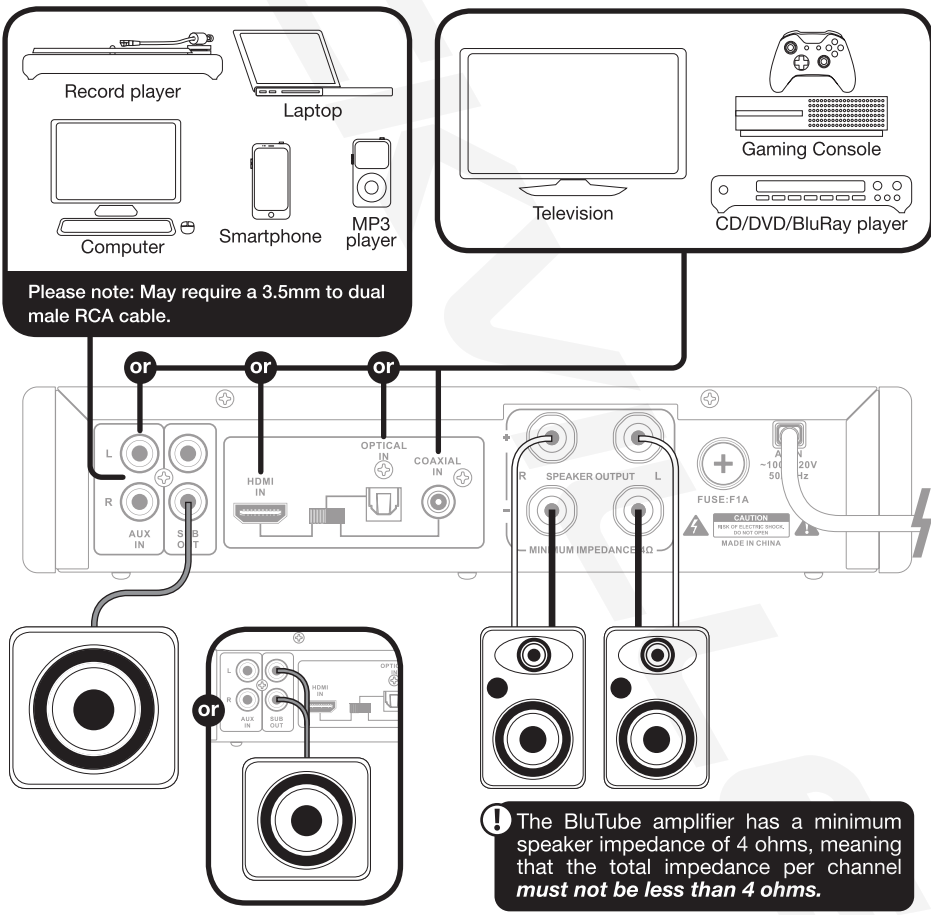
#### 15. Fuse

#### 16. Power cord

Setup  
BluTube, BluTube SG, BluTube WD, and BluTube LED



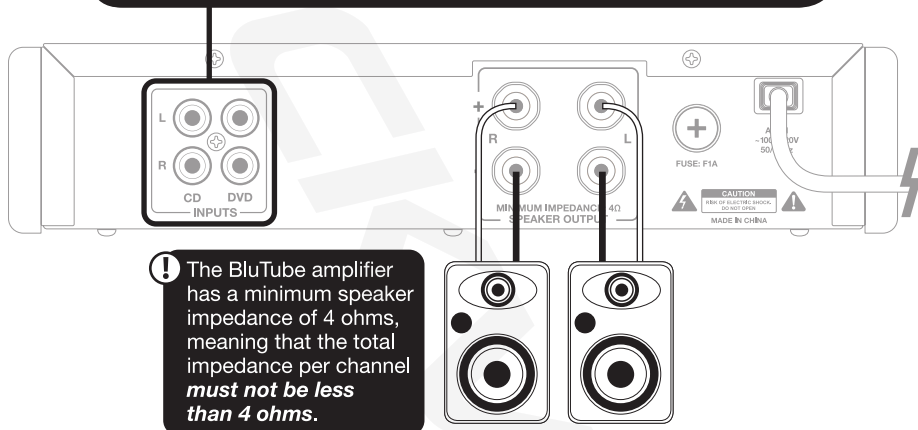
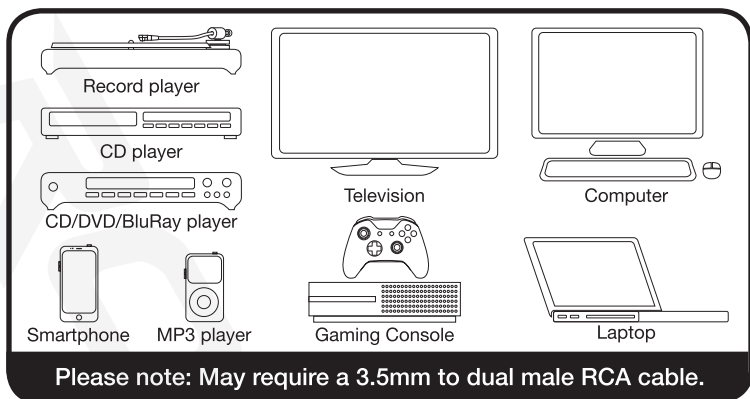
Rear Panel: BluTube SG, BluTube WD, and BluTube LED only



**! ATTENTION:** If your sub has one RCA input, use a male to dual male Y cable.

## Setup (continued)

### Rear Panel: BluTube only



## Inputs

### Bluetooth

#### All models

1. Turn on the unit and place the input selector switch to BT/USB (middle position). Please note: if there is a USB drive inserted, be sure to remove it as this will override Bluetooth mode.
  2. Turn on the Bluetooth feature on your device and ensure that it is in “discoverable” mode.
  3. Find and select (depending on your model) BluTube, BluTube SG, BluTube LED, or BluTube WD in the list of discoverable devices.
  4. If you are prompted for a pairing code, please enter: 0000.
  5. Play/pause: press the knob to play or pause playback.  
Previous/next control knob: turn the knob to the left for previous tracks, turn the knob to the right for next tracks. Turn the button slowly for gradual track selection.
  6. Playback may also be controlled from your Bluetooth device.
- Please note: The amplifier will remember and automatically connect to the last paired device.

## USB

### All models

1. Place the input selector switch to BT/USB (middle position).
2. Insert a USB drive into the USB port on the front panel.
3. The unit will automatically begin to play music stored on the external device.
4. Play/pause: press the knob to play or pause playback  
Previous/next control knob: turn the knob to the left for previous tracks, turn the knob to the right for next tracks. Turn the button slowly for gradual track selection.

Please note: Inserting a USB drive will override Bluetooth mode.

## Auxiliary

### BluTube

You can use either or both of the RCA inputs when you wish to hook up an external stereo signal source such as a CD player, MP3 player, computer, TV, gaming console, etc.

1. Place the input selector switch to CD (up position) or DVD (down position).
2. Connect the your source device to the RCA input labled CD. Please note, for some devices you may need a 3.5mm to dual male RCA cable.

### BluTube SG, BluTube WD, and BluTube LED

You can use the RCA input labled AUX IN when you wish to hook up an external stereo signal source such as CD player, MP3 player, computer, etc.

1. Place the input selector switch to AUX (up position).
2. Connect the your source device to the RCA input labled AUX IN. Please note, for some devices you may need a 3.5mm to dual male RCA cable.

## HDMI/Optical/Coaxial

### BluTube SG, BluTube WD, and BluTube LED only

Many TVs, Digital set-top boxes, game consoles, and DVD/BluRay players have HDMI, optical (fiber optic), or coaxial outputs. To connect via HDMI, optical, or coaxial input, follow the steps listed below.

1. Place the input selector switch on the front of the unit to HDMI, Optical, or Coaxial.
2. Set the HDMI/Optical/Coaxial input selector switch on the back of the unit to the desired mode.
3. Use an HDMI cable, a digital optical audio cable, or a coaxial cable to connect the source to the appropriate input port on the amplifier.

## Outputs

### Speakers

#### All models

The amplifier features left and right banana plug/binding post terminals to connect two speakers. When connecting your speakers, be sure to observe correct polarity. **The total impedance of your speakers must not be less than 4 ohms.**

### Subwoofer

#### BluTube SG, BluTube WD, and BluTube LED only

There are two RCA subwoofer outputs that are internally wired in parallel. You can use either one to feed the signal to a powered subwoofer. Here are various configurations you can use.

1. Use standard L/R RCA jacks to feed the signal from both outputs to any powered sub with L/R RCA inputs. Please note: since both outputs are putting out an identical mono signal, it doesn't matter which one you hook the left and right RCA jacks to.
2. Use a monoaural RCA cable to feed the signal from either jack to any powered subwoofer with an LFE (Low Frequency Effect) RCA input or a single RCA sub input.

## Outputs (continued)

### 3.5mm Headphone Output

#### All models

The 3.5mm headphone output is a direct plug and play connection. Simply connect your headphones, make sure the headphone/speaker output selector button is in the down position, and you are ready to listen.

Please note, when the 3.5mm jack is in use, all other output will be cut off. To switch back to speaker/sub output, simply depress the headphone/speaker output selector button.

## Features and Specifications

### BluTube

- 25 watts RMS x 2 @ 8 ohms
- 35 watts RMS x 2 @ 4 ohms
- Built-in Preamplifier
- 2 sets of RCA (CD and DVD) inputs to connect devices like a TV, DVD player, Laptop, MP3 player, Smart phone etc.
- VU meter
- Adjustable bass and treble (2-band equalizer)
- Built-in Bluetooth with 33-foot range
- Bluetooth: 2.1 +EDR
- USB: Supports WAV/MP3/WMA/APE/FLAC (900Kbps)
- USB input for music files from USB thumb drive. Can also charge your USB device.
- Rear Speaker Terminals: Banana plug/binding post outputs for 2 speakers
- Headphone output
- Frequency Response ( $\pm 3\text{dB}$ ): 25Hz – 20kHz
- Input Impedance: 47k $\Omega$
- Input Sensitivity: 300mV
- Output Impedance: 4 – 8 ohms
- Total Harmonic Distortion(THD):  $\leq 0.02\%$
- Signal-to-Noise Ratio(S/N):  $\geq 86\text{dB}$
- 110/220V Auto-switching power supply
- Unit weight: 6.6 lbs
- Unit dimension: 10.6" x 10.2" x 5.1"

### BluTube SG, BluTube WD, and BluTube LED

- 25 watts RMS x 2 @ 8 ohms
- 35 watts RMS x 2 @ 4 ohms
- Built-in Preamplifier
- 1 RCA (AUX) input to connect devices like a TV, DVD player, Laptop, MP3 player, Smartphone etc.
- HDMI input
- Optical input
- Coaxial input
- VU meter
- Tubes and knobs feature blue LED illumination (**BluTube LED model only**)
- Adjustable bass and treble (2-band equalizer)



- Built-in Bluetooth with 33-foot range
- Bluetooth: 2.1 +EDR
- USB: Supports WAV/MP3/WMA/APE/FLAC (900Kbps)
- USB input for music files from USB thumb drive. Can also charge your USB device.
- USB can charge your phone or other USB device
- Rear Speaker Terminals: Banana plug/binding post outputs for 2 speakers
- Subwoofer output
- Headphone output
- Frequency Response ( $\pm 3\text{dB}$ ): 25Hz – 20kHz
- Input Impedance: 47k $\Omega$
- Input Sensitivity: 300mV
- Output Impedance: 4 – 16 ohms
- Total Harmonic Distortion(THD):  $\leq 0.02\%$
- Signal-to-Noise Ratio(S/N):  $\geq 86\text{dB}$
- 110V power supply
- Unit weight: 6.6 lbs
- Unit dimension: 10.6" x 10.2" x 5.1"

Troubleshooting

PROBLEM	SOLUTION
No power	1. Make sure the unit is plugged in and the power switch is in the ON position. 2. Check and replace the fuse if necessary.
Humming noise when powered on	The humming noise is due to the tubes warming up and is completely normal. They take approximately 1 minute to warm up and the hum will go away at that point.
No sound/ distorted sound	1. Check that all cables are plugged in correctly. 2. Check the amplifier and input source volume settings. 3. Check the input switch to ensure the proper source is selected. 4. Check the headphone/speaker output selector button to ensure the proper output is selected. 5. Check that the HDMI/Optical/Coaxial selector switch at the rear of the unit is set to the proper input mode (BluTube SG, WD, and LED).
Bluetooth	1. Check to see that both devices are turned on and that your Bluetooth device is discoverable. 2. Turn both devices off and then on again. 3. Make sure you've selected the proper source. 4. Make sure that the Bluetooth device is within 5 feet of the unit. 5. Move both devices away from other Bluetooth devices, micro waves, wireless routers, and other electronics. 6. Make sure that the unit is not paired to another device. 7. Make sure there are no USB devices plugged in.
No USB playback	1. Make sure you've selected the proper source. 2. Make sure that the audio files are in the specified formats. 3. Check the USB drive for damage.

## FEDERAL COMMUNICATIONS COMMISSION COMPLIANCE INFORMATION

Responsible party name: Rockville

Address: 600 Bayview Ave.  
Entrance A  
Inwood, NY 11096

Hereby declares that the product(s) BluTube, BluTube SG, BluTube Wd, and BluTube LED Tube Amplifiers comply with FCC rules as mentioned in the following paragraph:

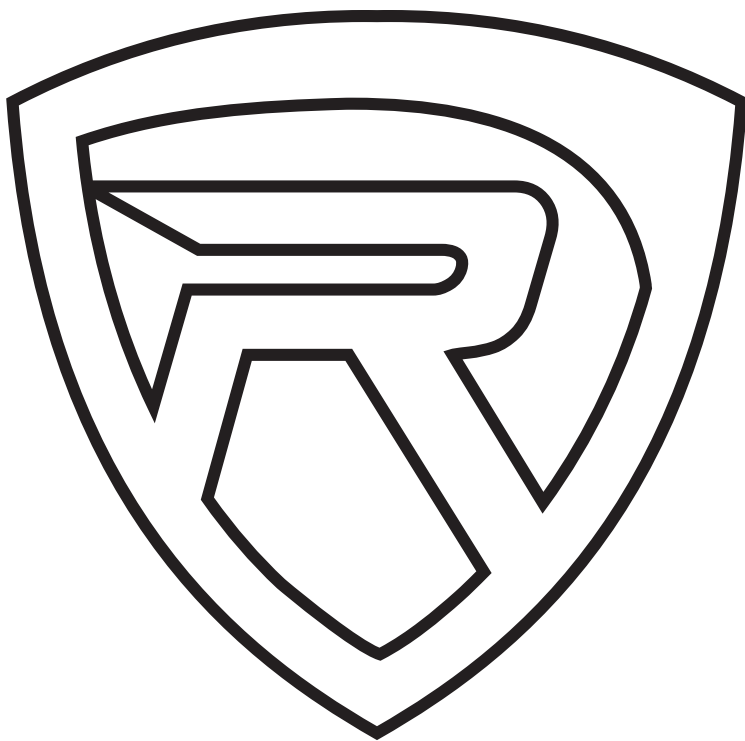
These devices comply with Part 15 of the FCC rules. Operation is subject to the following two conditions: (1) these devices may not cause harmful interference, and (2) these devices must accept any interference received, including interference that may cause undesired operation.

Note: This equipment has been tested and found to comply with the limits for a Class B digital device, pursuant to Part 15 of the FCC rules. These limits are designed to provide reasonable protection against harmful interference in a residential installation. This equipment generates, uses, and can radiate radio frequency energy and, if not installed and used in accordance with the instructions, may cause harmful interference to radio communications. However, there is no guarantee that interference will not occur in a particular installation. If this equipment does cause harmful interference to radio or television reception, which can be determined by turning the equipment off and on, the user is encouraged to try to correct the interference by one or more of the following measures:

- Reorient or relocate the receiving antenna.
- Increase the separation between the equipment and receiver.
- Connect the equipment to an outlet on a circuit different from that to which the receiver is connected.
- Consult the dealer or an experienced radio/TV technician for help.

מרכז  
למחקר  
והתפתחות  
טכנולוגית

# ***ROCKVILLE***



## **RockvilleAudio.com**

© 2021 ROCKVILLE // Features and specifications are subject to change and or improvement without notice.