

ROCKVILLE

BEST PAR 50

RECHARGEABLE PAR CAN WASH LIGHT
w/WIRELESS DMX and RGBWA+UV

OWNER'S MANUAL

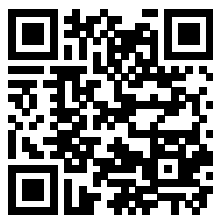
ATTENTION:
WATCH THIS VIDEO BEFORE FIRST USE!

Who reads manuals?

Scan the **QR code** or go to **rockvillesupport.com/best-par-50** to access how-to video(s), the owner's manual, and other important information you may need to get the most out of your item.

If you prefer written instructions, please read ahead!

With Rockville you get many options.



Missing items? If you ordered a bundle that includes more than one product and you are missing part of your bundle then it just means your order shipped from two different warehouses. You will receive the remaining items very soon. If you have any concerns or inquiries, feel free to call our customer support center at 1-646-758-0144, 24 hours a day/7 days a week.

Thank you for purchasing the Rockville Best Par 50 Rechargeable Par Can Wash Light w/ Wireless DMX+RGBWA+UV. Please read the owner's manual carefully for proper use of your Best Par 50. Should you need assistance, please call our technical help line at 1-646-758-0144, 24 hours a day/7 days a week.

Includes

- Best Par 50
- Remote control
- Power cord
- Owner's manual
- Warranty

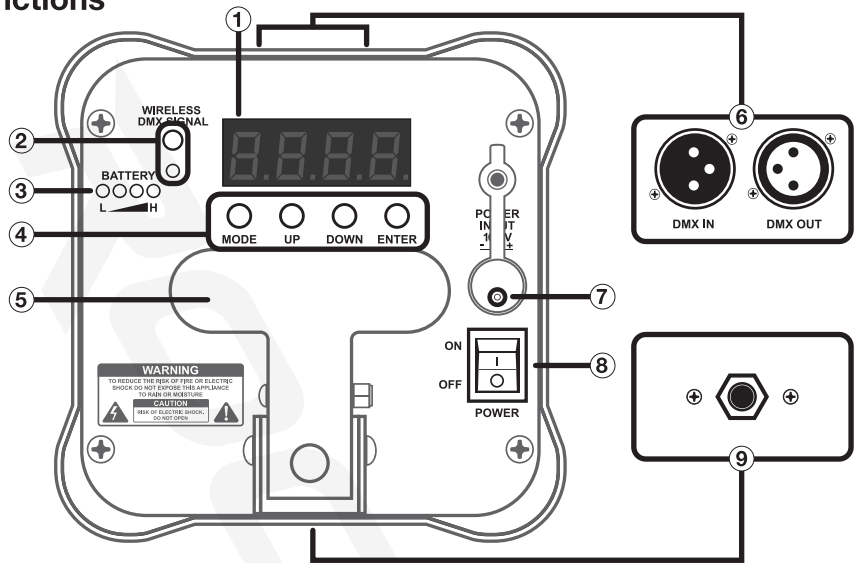
IMPORTANT SAFETY INSTRUCTIONS



NO USER SERVICEABLE PARTS INSIDE. WE RECOMMEND TAKING THE UNIT TO A QUALIFIED SERVICE TECHNICIAN FOR ANY REPAIRS.

- To reduce risk of electric shock, never open the unit. There are no user serviceable parts, refer service to an authorized Rockville service center.
- Avoid looking directly into the lights.
- Do not expose this unit to any kind of moisture.
- The products housing may become hot during operation. Do not touch.
- Do not attempt to operate this unit if the power cord has been frayed or broken.
- Do not attempt to break off or remove the ground prong. This prong is used to reduce the risk of electrical shock and fire in case of an internal short.
- Never plug this unit into a dimmer pack.
- Do not operate this unit if it is damaged.
- This unit is intended for indoor use only.
- During long periods of non-use, disconnect the unit from power source.
- Always mount this unit in a safe and stable matter.
- Power supply cords should be routed so that they are not likely to be walked on or pinched by items placed upon or against them, paying particular attention to the point of exit from the unit.
- To avoid unnecessary wear and to improve the unit's lifespan, unplug the unit when not in use for extended periods of time.
- When choosing a location for your device, make sure to avoid impact, vibration, dust, hot and cold temperatures and dampness. Furthermore, no powerful transformers or motors must be used close to the device.
- The effect light must only be operated at a maximum ambient temperature of 104° Fahrenheit (40 °C).
- Never cover the device. Make sure when mounting with other equipment that there is sufficient ventilation. Maintain a sufficient distance to other devices and walls. Never install the effect light in direct proximity of heat sources. Do not point any strong spot lights or light sources towards the device. This may cause overheating.
- Do not drill or screw additional screws into the casing in order to fasten the device.
- The device must be mounted out of normal reach.
- Illuminated objects must be at least 0.5 m away from the device's light emission source. Easily flammable materials such as decorative fabrics must also have a distance of at least 0.5 m to the device. Otherwise, such objects may catch fire!
- When mounting the product, make sure that the power cord is neither jammed nor damaged by sharp edges.
- During installation or service work, the area below the place of installation must be cordoned off.
- The installation surface or mounting fixture needs to be designed in a way that it can take 10 times its load capacity for at least 1 hour without permanent damaging deformation.
- It is also essential that the device is secured by means of a second safety restraint that is independent of the actual mounting supports when installing it in an elevated position. No part of the installation must fall down if the main suspension system fails.
- Observe all relevant regulations of your country when installing the device.
- Please keep the lenses out of direct sunlight as it can cause heat build up which will cause serious damage to the unit.

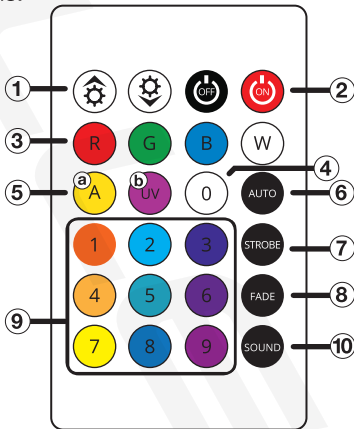
Functions



- 1. LED screen
- 2. Wireless DMX frequency set button and LED indicator
- 3. Battery level LED indicators
- 4. Controls: Menu - Press repeatedly to see mode options
Up - Scroll up through settings
Down - Scroll down through settings
Enter - Enter submenu
- 5. Kickstand
- 6. DMX in/DMX out
- 7. Power in
- 8. Power on/off
- 9. Mounting bracket hole

Remote

- 1. Dimming/Speed/Up-Down: Adjusts the brightness of the fixture when manually adjusting colors. In Auto Mode, the buttons are used to adjust the speed of the selected program. In color mixing mode, they serve as up and down buttons.
- 2. On/Off buttons
- 3. Red, Green, Blue, and White LED buttons
- 4. 0: press to access 32 static colors. Once active, use the Dimming up and dimming down keys to scroll through colors.
- 5. (a) Amber and (b) UV buttons
- 6. Auto: Activate/deactivate auto color switching mode
- 7. Strobe: Activate/deactivate strobe mode
- 8. Fade: Activate/deactivate auto fade mode
- 9. Color select (1 – 9): use these buttons to select a specific static color.
- 10. Sound: Activate/deactivate sound mode



Charging

To charge the BEST PAR 50 plug the charger into any 110v wall socket, plug the other end to the unit's charging port, and turn off the power. While charging, the power block LED will be red. Once the unit is fully charged, the LED will turn green. Charge the battery for at least four hours to attain a full charge and extend it's lifespan. After a full charge, the battery can last 3 hours will all LEDs on or up to 11 hours with one color on. Results will vary based on LED brightness. **PLEASE NOTE:** The fixture must be charged for 6 – 7 hours when charging for the first time.

Operation

Use the MENU button to enter the settings menu. Use the UP and DOWN buttons to select the desired setting and set their values. Press and hold the UP and DOWN buttons to scroll quickly through the menu options. Press the ENTER button to save your selection. Press MENU to exit.

Display Mode	Value	Description
d001	d001 - d255	10 Channel mode
A001	A001 - A255	6 Channel mode
r001	L-oF - L-on	
Co01	Static color mode	
	Co01	Red
	Co02	Green
	Co03	Blue
	Co04	White
	Co05	Yellow
	Co06	Purple
	Co07	Red + Green
	Co08	Green + Blue
	Co09	Red + Blue
	Co10	Red + White
	Co11	Green + Yellow
	Co12	Red + White + Purple
	Co13	Green + White + Yellow
	Co14	Blue + Yellow
	Co15	Green + Purple
	Co16	White + Yellow
	Co17	White + Purple
	Co18	Yellow + Purple
	Co19	White + Yellow + Purple
	Co20	Green + Blue + Yellow
	Co21	Red + Green + White + Purple
	Co22	Blue + White + Yellow + Purple
	Co23	Red + Purple
	Co24	Green + Purple

Display Mode	Value	Description
C001	Static color mode	
	C025	Blue + Purple
	C026	Green + White + Yellow
	C027	Red + White + Yellow
	C028	Green + Blue + Yellow
	C029	Red + White + Yellow
	C030	Blue + Yellow
	C031	Green + White
	C031	Green + White
CC01	0001 - 0099	Color Jump
CP01	CP01 - CP99	Gradient
JE01	JE01 - JE99	Pulse
SS01	SS01 - SS99	Strobe setting
BE0E	Sound control mode	
r255	r000 - r255	Red
G255	G000 - G255	Green
b255	b000 - b255	Blue
W255	W000 - W255	White
Y255	Y000 - Y255	Amber
P255	P000 - P255	Purple

Setting Wireless Frequency Groups

The BEST PAR 50 features seven individual 2.4ghz groups so you can organize your fixtures. Each group is represented by a color. Use the wireless frequency set button to select any one of the seven available group colors. Make sure all the other fixtures within that group are set to the same group color.

Primary/Secondary Mode

1. Connect to power source and turn on all fixtures.
2. Connect all fixtures wirelessly or via the DMX IN/DMX OUT ports. If connecting wirelessly, make sure that all fixtures are set to the same frequency group. See the “Setting Wireless Frequency Groups” section above.
3. Set all fixtures to DMX mode A001 (6CH) or D001 (10CH) on the panel display.
4. Set one fixture to be the primary, R001: L-on. Set all other fixtures to scoundary mode, R001: L-of.

DMX Mode

The BEST PAR 50 can be controlled via any DMX Controller. You can either Link the picture to your DMX Controller with a DMX cable or utilize the Wireless DMX function if your Controller is capable. From your DMX controller you can change the color, control different modes, create scenes, and program chases. You can also daisy chain multiple units of BEST PAR 50 together via DMX Cables, or Wireless DMX. The Fixture uses either 6 or 10 channels depending what DMX mode you are in.

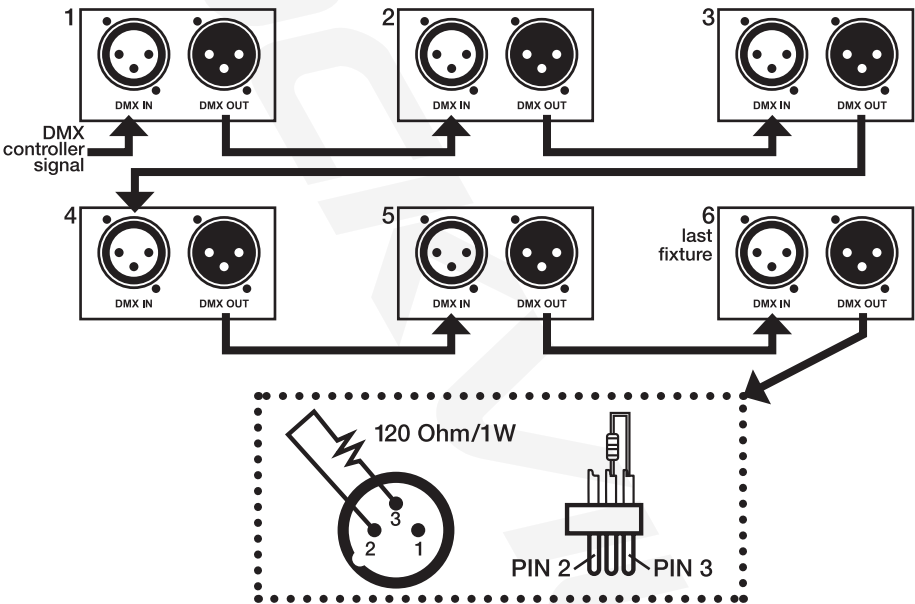
DMX Channels

To set the DMX starting channel address press the MENU button until you see d001 (10 channel mode) or A001 (6 channel mode). Now use the UP and DOWN buttons to select the desired setting. Press the ENTER button to save your selection.

DMX Termination (Optional)

The last fixture of a DMX chain has to be “terminated”. This prevents electrical noise from disturbing and corrupting the DMX control signals. To terminate the last fixture solder a ¼ Watt, 120 Ohm resistor across the DATA - and DATA + wires. The connections are illustrated below. If you are only connecting a few fixtures which are close together and use a short run to the controller, you may be able to operate without a terminator. Please see the diagram below.

DMX Termination Diagram



DMX Controller Function

When using a DMX controller, use the chart below to reference each channel’s function.

6 Channel Mode

Ch.	Function	Value	Description
1	Red Dimmer	0 – 255	Adjust individual LED brightness
2	Green Dimmer	0 – 255	
3	Blue Dimmer	0 – 255	
4	White Dimmer	0 – 255	
5	Amber Dimmer	0 – 255	
6	Purple Dimmer	0 – 255	

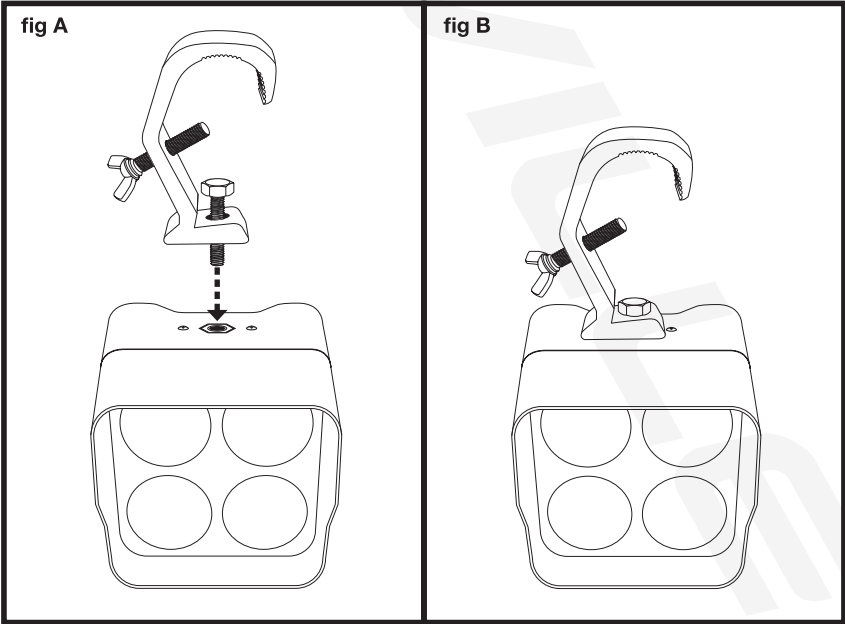
10 Channel Mode

Ch.	Function	Value	Description
1	Primary Dimmer	0 – 255	Adjust individual LED brightness
2	Red Dimmer	0 – 255	
3	Green Dimmer	0 – 255	
4	Blue Dimmer	0 – 255	
5	White Dimmer	0 – 255	
6	Amber Dimmer	0 – 255	
7	Purple Dimmer	0 – 255	
8	Strobe	0 – 255	
9	Close	0 – 50	No function
	Color Jump	51 – 100	Functions
	Gradient	101 – 150	
	Pulse change	151 – 200	
	Sound control	201 – 255	
10	Adjust function speed

Installation

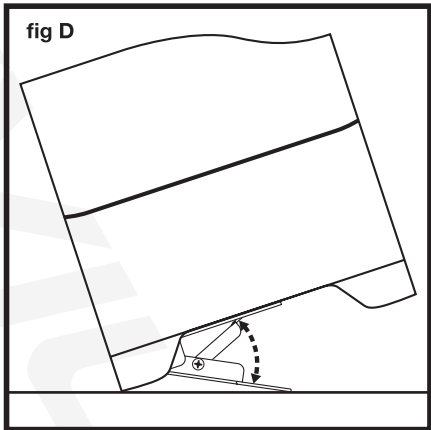
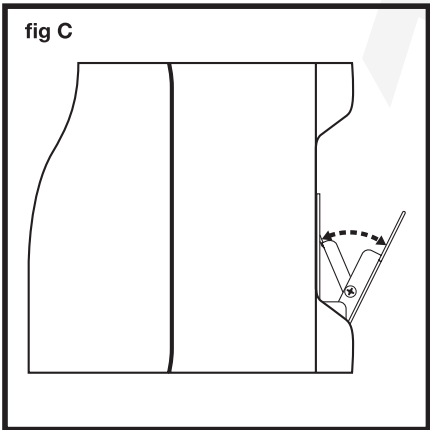
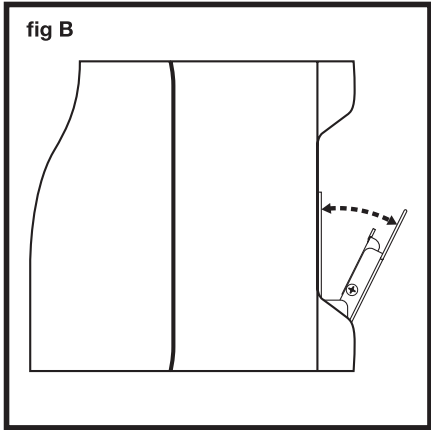
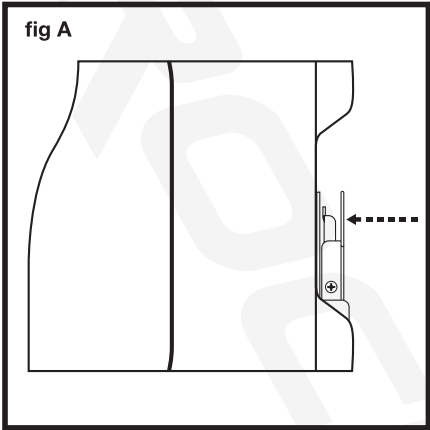
Truss Installation

To hang the fixture from a truss, use the included mounting clamps and brackets. There is a mounting hole located on the bottom of the fixture. Secure the mounting clamp and bracket to these mounting holes as shown in figures A and B.



Floor Installation

- 1. The Rockville BEST PAR 50 features a kickstand for easy floor installation (fig. A).
- 2. Pull the kickstand out (fig. B) and set it to the desired angle.
- 3. Pull the locking tab and set it into the corresponding slot (fig. C).
- 4. Once the kickstand is locked in place, flip the stand onto its bottom (fig. D).



Features and Specifications

- 100% true wireless! Built-in 2.4ghz Wireless DMX 512 receiver allows you to link multiple lights together without wires
- Built-in rechargeable battery allows you to use the lights without plugging them in making your setup 100% wireless
- Light source: 4 LEDs/6 Watts each LED
- Each LED is a 6-in-1 RGBWA+UV (RED, GREEN, BLUE, WHITE, AMBER + ULTRA VIOLET)
- DMX control: 6 or 10 channels
- DMX input and output (3 pin)
- 50,000 hours life expectancy
- IRC wireless remote control included
- Super bright: 2840 lux @1m (way brighter than others on the market)
- 4-digit digital LED display for navigating menus and modes
- Can be operated through Remote control, DMX controller, built in programs, and sound activated mode
- Easy color mixing
- LED angle: 40°
- Built-in 4400 mAh lithium battery
- LED battery indicator so you can see how much battery life is remaining at all times
- Single color run time: Red - 15 hours, Green - 13 hours
- Double color run time: 9 hours
- All colors run time: 3 hours (without UV you will get 4.5 hours)
- Recharge time: 6 hours
- Battery will still perform optimally even after hundreds of charging cycles
- Battery overcharge protection
- Power supply: AC110V/220V – 50/60Hz
- Power consumption: 30w
- Automatic modes: color change, strobe, dimmer, gradual color change, jump change, sound activated
- Flicker-free lights
- Colors: 16.7 million colors
- 1-year warranty
- Black housing
- Create customized colors
- Field replaceable batteries
- 110/220 switchable for use in any country
- Unit Dimensions: 7.68" x 7.68" x 6.89"
- Unit Weight: 4.6 Lbs

Troubleshooting

PROBLEM	SOLUTION
No power	<ol style="list-style-type: none"> 1. Make sure the unit is plugged in and the power switch is in the ON position. 2. Make sure the power cord is not damaged.
No power (battery mode)	<ol style="list-style-type: none"> 1. Make sure the unit is fully charged the power switch is in the ON position. 2. Charge the battery for at least 4 hours. Make sure the power switch is in the OFF position.
No fixture DMX response	<ol style="list-style-type: none"> 1. Make sure that the starting address at the fixture is correct and all other fixtures are set to the same address. 2. Make sure the DMX channel setting is the same for all fixtures. 3. Make sure you are using the correct faders on the controller. 4. Make sure you are using the correct fixture template and assign controller faders accordingly. 5. Change the signal polarity at the controller. 6. Check your DMX cables to ensure they are not damaged. 7. Check that the DMX cables are connected properly and are wired correctly (pin 3 is “hot”; on some other DMX devices pin 2 may be “hot”). Also, check that all cables are connected to the right connectors; it <i>does</i> matter which way the inputs and outputs are connected.
No fixture DMX response (wireless mode)	<ol style="list-style-type: none"> 1. Check all the steps listed in the “No fixture DMX response” section above. 2. Make sure you’ve followed all the steps in the “Setting Wireless Frequency Groups” section of this manual. 3. Make sure there are no obstructions between the primary unit and the secondary fixtures. 4. Make sure the Primary/Secondary settings (R001) are correct. See page 5.
Unit does not respond to sound	<ol style="list-style-type: none"> 1. Quiet or high-pitched sounds will not activate the unit. 2. Make sure that Sound control mode is turned on.

FEDERAL COMMUNICATIONS COMMISSION COMPLIANCE INFORMATION

Responsible party name: Rockville

Address: 600 Bayview Ave.

Entrance A

Inwood, NY 11096

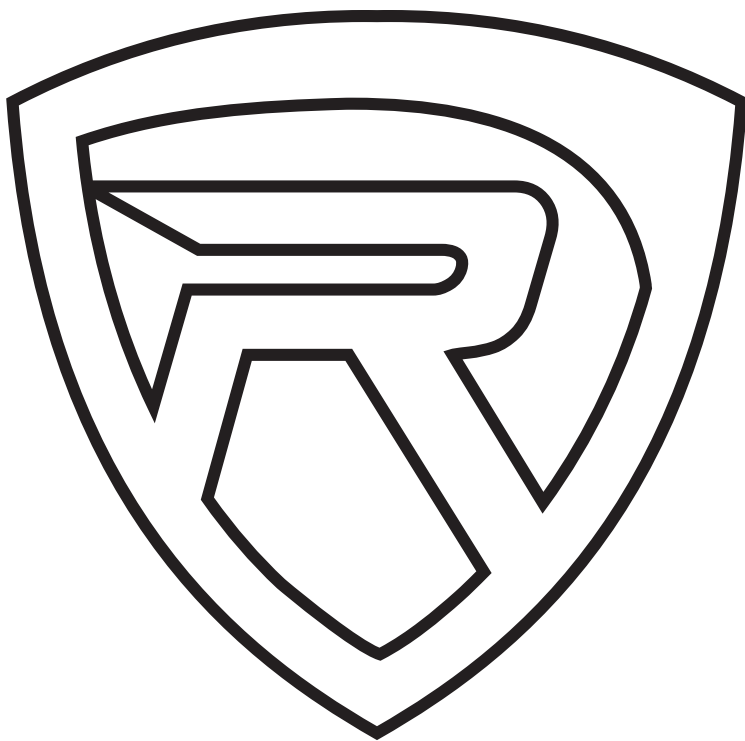
Hereby declares that the product BEST PAR 50 complies with FCC rules as mentioned in the following paragraph:

This device complies with Part 15 of the FCC rules. Operation is subject to the following two conditions: (1) this device may not cause harmful interference, and (2) this device must accept any interference received, including interference that may cause undesired operation.

Note: This equipment has been tested and found to comply with the limits for a Class B digital device, pursuant to Part 15 of the FCC rules. These limits are designed to provide reasonable protection against harmful interference in a residential installation. This equipment generates, uses and can radiate radio frequency energy and, if not installed and used in accordance with the instructions, may cause harmful interference to radio communications. However, there is no guarantee that interference will not occur in a particular installation. If this equipment does cause harmful interference to radio or television reception, which can be determined by turning the equipment off and on, the user is encouraged to try to correct the interference by one or more of the following measures:

- Reorient or relocate the receiving antenna.
- Increase the separation between the equipment and receiver.
- Connect the equipment to an outlet on a circuit different from that to which the receiver is connected.
- Consult the dealer or an experienced radio/TV technician for help.

ROCKVILLE



RockvilleAudio.com

© 2024 ROCKVILLE // Features and specifications are subject to change and/or improvement without notice.