

# ROCKVILLE

## RW68CA

6 x 8" 500W SLIM UNDER-SEAT  
POWERED CAR/TRUCK SUBWOOFER

### OWNER'S MANUAL

**ATTENTION:**  
**WATCH THIS VIDEO BEFORE FIRST USE!**

#### *Who reads manuals?*

Scan the **QR code** or go to [rockvillesupport.com/rw68ca](http://rockvillesupport.com/rw68ca) to access how-to video(s), the owner's manual, and other important information you may need to get the most out of your item.

**If you prefer written instructions, please read ahead!**

*With Rockville you get many options.*



**Missing items?** If you ordered a bundle that includes more than one product and you are missing part of your bundle, then it just means your order shipped from two different warehouses. You will receive the remaining items very soon. If you have any concerns or inquiries, feel free to call our customer support center at 1-646-758-0144, 24 hours a day/7 days a week.

Thank you for purchasing this Rockville RW68CA underseat active subwoofer.

The RW68CA is an all in one solution to give you great sounding bass in your vehicle without taking up a lot of space. This sub enclosure is only 2.8" thick so that it can easily fit under your seat. The amplifier is built in, so installation and wiring is clean and simple. This is a true all in one subwoofer solution with the subwoofer built into the enclosure along with a top of the line amplifier built in as well.

We focused on making installation a breeze so we designed this unit with you the customer in mind. We added high level inputs so you can install this to an after-market or factory system. The high level input allows you to install this even if you have no preamp outputs available.

Please read this installation guide carefully for proper use of your RW68CA underseat active subwoofer. Should you need assistance, please call our technical help line at line at 1-646-758-0144, 24 hours a day/7 days a week.

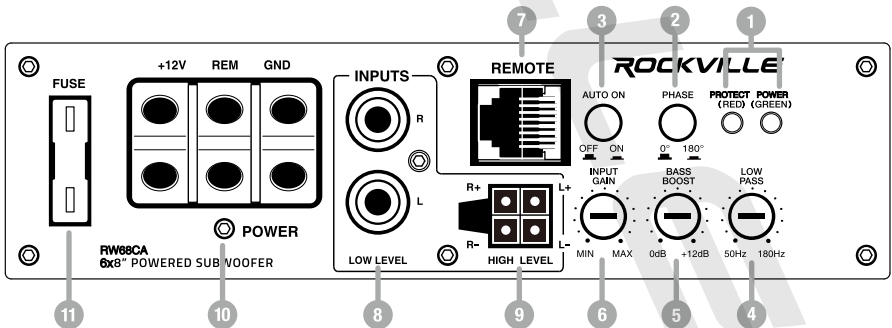
## IMPORTANT SAFETY INSTRUCTIONS



- To reduce risk of electric shock, never open the unit. There are no user serviceable parts, refer service to the Rockville service center.
- Do not expose this unit to any kind of moisture.
- Please ensure that the unit is situated in a properly ventilated area.

# Features

1. Power/Protect LEDs: The 2 LED's located on the side of the amplifier provide indication of the amplifier status, the Power LED will light when the amplifier is receiving proper power, ground and remote voltages. The second LED will light when the amp goes into protection mode.
2. Phase Shift: Use this button to help compensate for time alignment problems. Such problems usually result from having the subwoofer positioned at a different distance from the listener than the other speakers in the system.
3. Auto Power-on: The auto power-on function is for high level (speaker level) connections. When the switch is in the "ON" position, the subwoofer will turn on when there is a signal input. If there is no signal input, the subwoofer will automatically turn off. If you prefer to use the remote turn-on function, leave the switch in the "OFF" position.
4. Low Pass Filter: This control permits you to define the frequency range you want the subwoofer amplifier to receive. The subwoofer will reproduce all sound below the frequency you set.
5. Bass Boost: This control will increase the sound level of the bass frequencies.
6. Input Gain Control: After you've installed your system, turn this control to minimum. Turn the headunit on (subwoofer will turn on via the remote connection) and set the volume to 2/3 full level. Slowly turn up the subwoofer input gain control until you hear a small amount of distortion. Now reduce the level until the distortion is completely gone. The input gain control is now set.
7. Remote Level Control Port: Plug in the included remote level control to adjust the volume level of the subwoofer independently.
8. Low Level RCA Inputs: Low level inputs are the recommended way to introduce an audio signal to the subwoofer if RCA outputs are present on your headunit or other signal source (such as a sound processor).
9. High Level Input: These inputs, also referred to as speaker level inputs, allow you to connect to the factory speaker wires. They are called High Level inputs because they convert the high voltage running through factory speaker wires to one the amplifier can handle. These inputs will provide the end user with clean, well defined sound for optimal musical enjoyment. Use the supplied cable and wire harness and connect the outputs properly as shown in the connection diagram in this manual.
10. Power Input Terminal
11. Fuse: Do not use a fuse with a different value than the one provided.



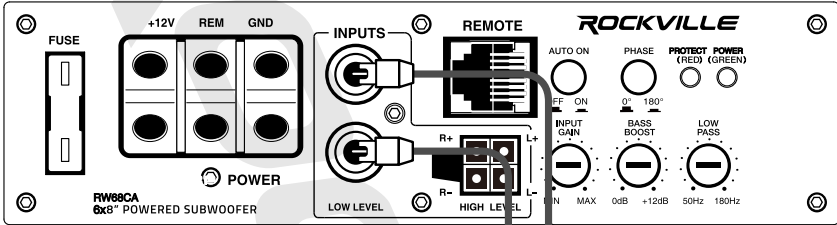
## Wiring

### Low Level Input

Low-level (RCA) input wiring is preferred for best audio performance. Most trunk and underseat installations will require a 6 – 12 foot RCA cable. Always use a high quality cable.

#### **⚠ ATTENTION**

Do not connect the high level and low level inputs to the amplifier at the same time!



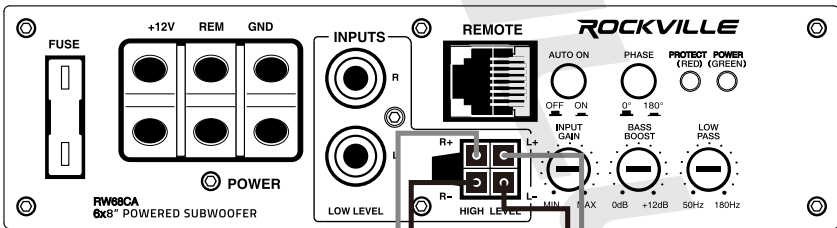
From Head Unit RCA output  
or subwoofer output if available

### High Level Input

The high level inputs should only be used when your receiver lacks RCA outputs. Splice the high level input leads from the harness directly to your headunit's speaker-level outputs. Be sure to observe polarity to avoid audio phase problems.

#### **⚠ ATTENTION**

Do not connect the high level and low level inputs to the amplifier at the same time!

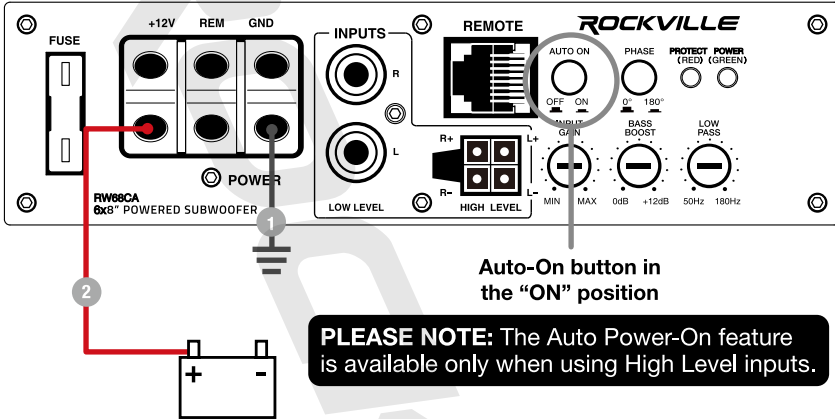


Splice the high level input leads from the harness directly to your headunit's speaker-level outputs.

# Power Connections

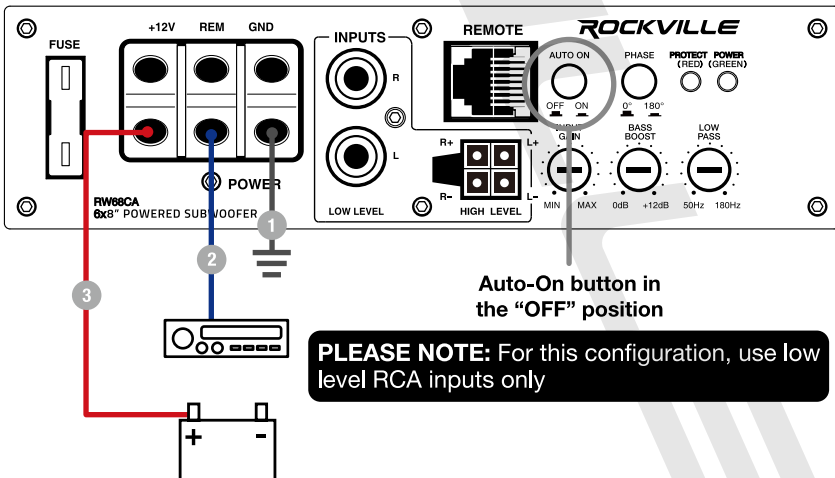
A. In this configuration the Auto Power On switch is in the “ON” position.

1. Connect the ground cable (black) of the harness to the closest point on the chassis of the vehicle. Use 8 gauge (or heavier) wire to connect the ground cable.
2. Connect the +12V cables from the harness, using 8 gauge wire or heavier, to the positive (+) terminal of the vehicle’s battery.



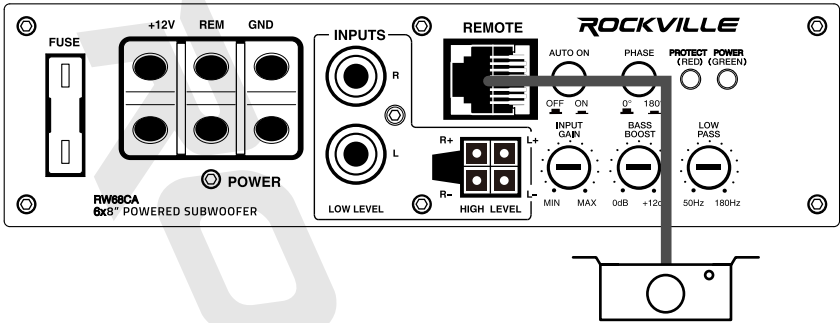
B. In this configuration the Auto Power switch is in the “OFF” position.

1. Connect the ground cable (black) of the harness to the closest point on the chassis of the vehicle. Use 8 gauge (or heavier) wire to connect the ground cable.
2. Connect the remote cable (blue) of the harness to the remote output of the headunit using 16 gauge (or heavier) wire.
3. Connect the +12V cables from the harness, using 8 gauge wire or heavier, to the positive (+) terminal of the vehicle’s battery.



## Bass Remote

Using the included RJ45 cable, install the remote control securely under the dash or in a similar location where using it will not distract the driver.



## Features

- 500 Watts Peak / 100 Watts RMS
- Heavy Duty Mounting Feet
- PWM MOSFET Power Supply
- Low Level RCA Input
- High Level Inputs with Auto Turn-On Technology
- Adjustable Input Sensitivity
- Soft Delayed Remote Turn-On
- Short Circuit and Thermal Protection Circuits
- Overload Protection circuit
- Green Power/Red Protect LEDs
- Phase Switch: 0° or 180°
- Low Pass Filter: 50Hz - 180Hz
- Bass Boost: 0 - 12dB @ 45Hz
- Built in Subsonic Filter @ 20Hz
- THD < 0.5%
- Subwoofer Level Remote Control
- Fuse Rating: Single 20A

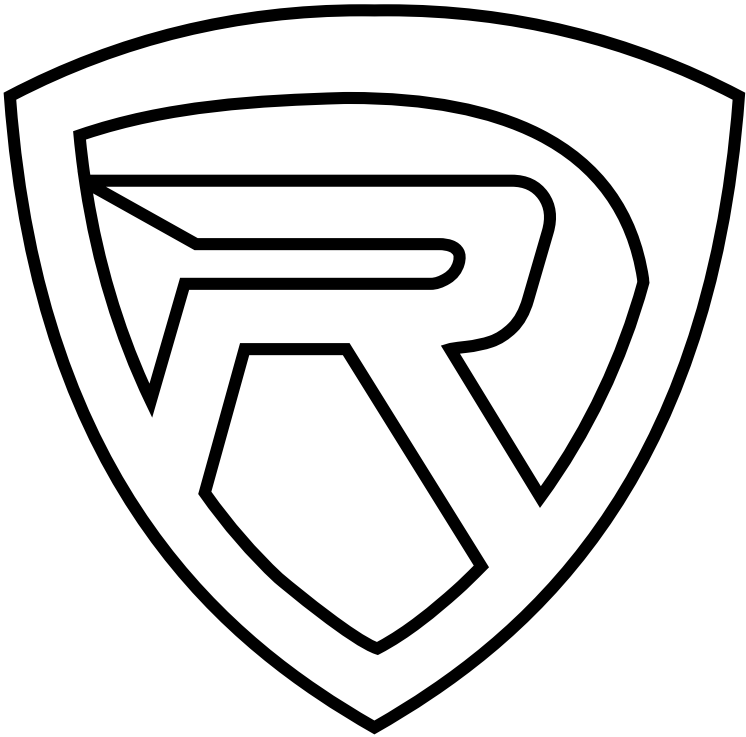
## Specifications

- Impedance: 40Ohm
- Dimensions: 10.2 x 7.7 x 2.8 (L x W X H) Inches
- Frequency Response: 20Hz - 180Hz
- Signal to Noise Ratio >90dB
- Sensitivity: 90dB @ 1w / 1m
- Input sensitivity, Low level 200mV
- Input sensitivity, High level 0.5V

## Troubleshooting

| PROBLEM  | SOLUTION  |
|--|---|
| Unit will not power up                               | <ol style="list-style-type: none"> <li>1. Check your ground connection.</li> <li>2. Check that the Remote Input Turn-On has at least 5V DC.</li> <li>3. Check that there is battery power going to the +12V terminal.</li> <li>4. Check all fuses, replace if necessary.</li> </ol> <p>Make sure the protection LED is not on. If it is, shut off the amplifier briefly and then turn it back on.</p> |
| Protection LED comes on when amplifier is powered up | <ol style="list-style-type: none"> <li>1. Turn down the volume control on the head unit to prevent overdriving.</li> <li>2. Check all connections and ensure that they are connected to the correct terminals.</li> <li>3. Make sure there is good airflow around the amp.</li> </ol>   |
| No Output  | <ol style="list-style-type: none"> <li>1. Check that all fuses are OK.</li> <li>2. Check that the unit is properly grounded.</li> <li>3. Check that the Remote Input Turn-On has at least 5V DC.</li> <li>4. Check that the RCA audio cables are plugged into the proper inputs.</li> <li>5. Check Gain and Crossover settings.</li> </ol>  |
| Low Output   | <ol style="list-style-type: none"> <li>1. Reset the level control.</li> <li>2. Check the crossover control settings.</li> </ol>   |
| High Hiss in the sound                               | <ol style="list-style-type: none"> <li>1. Check that all connections are properly connected.</li> <li>2. It is best to set the amplifier's input level control as low as possible. The best subjective signal-to-noise ratio is achieved in this manner. Try to set the headunit's volume level as high as possible without distortion.</li> </ol>  |
| Squealing noise is present                           | Check for improperly grounded RCA interconnects.  |
| Distorted sound                                      | <ol style="list-style-type: none"> <li>1. Check that the Input Gain control is set to match the signal level of the head unit.</li> <li>2. Lower the Gain level setting.</li> </ol>   |
| Engine noise: Static type                            | <ol style="list-style-type: none"> <li>1. Route your RCA cables away from the vehicle's wiring.</li> <li>2. Route the Power cable on the side opposite to the RCA cables.</li> <li>3. Use high-quality RCA cables.</li> </ol>   |
| Alternator whine                                     | <ol style="list-style-type: none"> <li>1. Check that the RCA grounds are not shorted to the vehicle chassis.</li> <li>2. Check that the headunit is properly grounded.</li> </ol>   |

***ROCKVILLE***



**RockvilleAudio.com**

© 2022 ROCKVILLE // Features and specifications are subject to change and/or improvement without notice.