

# ROCKVILLE

## Rock Shaker

POWERED HOME THEATER SUBWOOFERS

### OWNER'S MANUAL

## ATTENTION:

### WATCH THIS VIDEO BEFORE FIRST USE!

**Who reads manuals?** Scan the **QR code** or go to the **URLs** to access how-to video(s), the owner's manual, and other important information you may need to get the most out of your item.

**If you prefer written instructions, please read ahead!**

*With Rockville you get many options.*



rockvillesupport.com/  
rock-shaker-6-5-wood



rockvillesupport.com/  
rock-shaker-6-5-black



rockvillesupport.com/  
rock-shaker-8-white



rockvillesupport.com/  
rock-shaker-8-wood



rockvillesupport.com/  
rock-shaker-8-black



rockvillesupport.com/  
rock-shaker-10-white



rockvillesupport.com/  
rock-shaker-10-wood



rockvillesupport.com/  
rock-shaker-10-black



rockvillesupport.com/  
rock-shaker-12-white



rockvillesupport.com/  
rock-shaker-12-wood



rockvillesupport.com/  
rock-shaker-12-black

**Missing items?** If you ordered a bundle that includes more than one product and you are missing part of your bundle then it just means your order shipped from two different warehouses. You will receive the remaining items very soon. If you have any concerns or inquiries, feel free to call our customer support center at 1-646-758-0144, 24 hours a day/7 days a week.

Thank you for purchasing this Rockville Rock Shaker Series Powered Home Theater Subwoofer. Please read this owner's manual carefully for proper use of your Rock Shaker. Should you need assistance, please call our technical help line at 1-646-758-0144, 24 hours a day/7 days a week.

## Includes

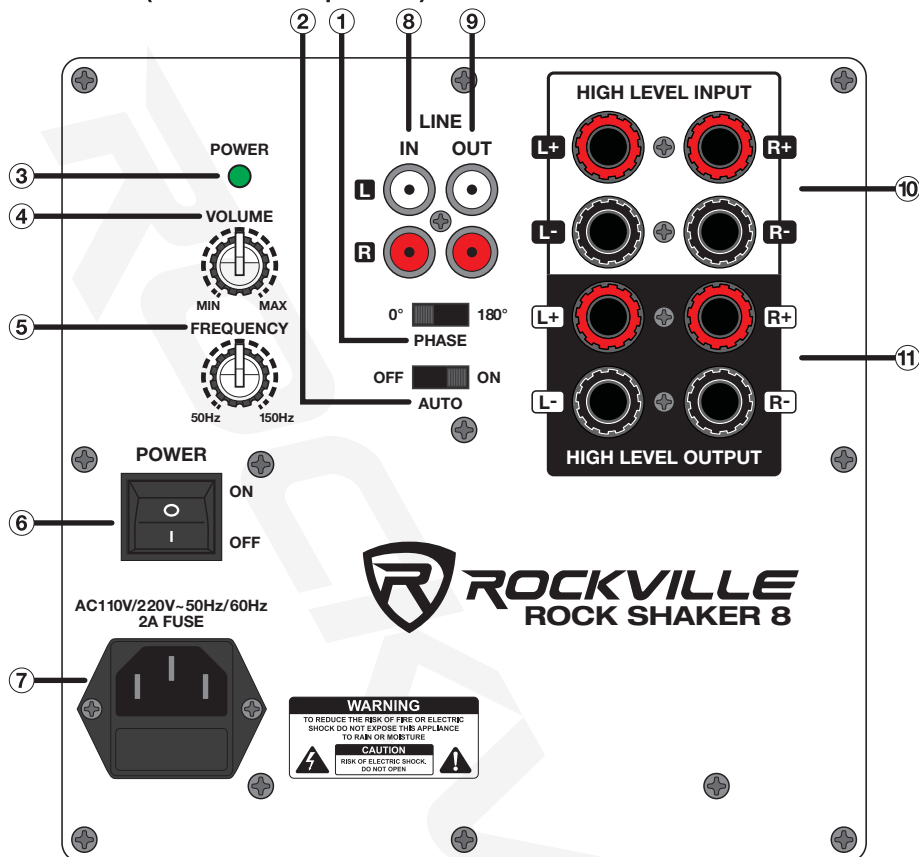
- Rock Shaker subwoofer
- Detachable foam grill
- Power cord
- Owner's manual
- Warranty

## IMPORTANT SAFETY INSTRUCTIONS



- To reduce risk of electric shock, never open the unit. There are no serviceable parts, refer service to the Rockville service center.
- Do not expose this unit to any kind of moisture.
- Unit should be situated away from heat sources.
- Do not obstruct vents or exhaust fan.
- Please ensure that the unit is situated in a properly ventilated area.
- Make sure the unit is placed on a level and stable surface. This unit should not be mounted to a wall or the ceiling.

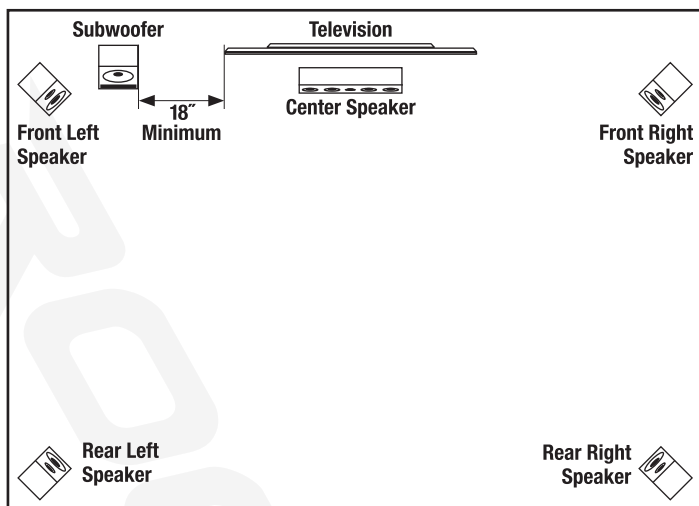
## Functions (Rock Shaker 8 pictured)



1. Phase switch
2. Auto switch: Allows you to set the power input mode for the unit. See page 6 for a full description.
3. Power LED indicator
4. Volume control
5. Frequency control
6. Power switch
7. IEC AC power socket w/user serviceable fuse
8. Line input
9. Line output
10. High level speaker input
11. High level speaker output

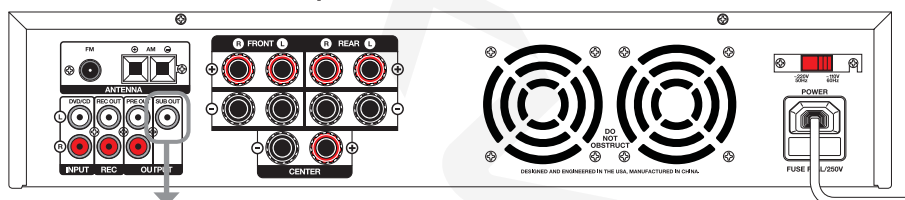
## Subwoofer Placement & Time Alignment

Although you can place the ROCK SHAKER subwoofer in a variety of locations within your listening environment, you'll enjoy the best performance when it's on the same side of the room as your system's front speakers. You can also place the subwoofer in a corner or near a wall to increase its loudness. Be sure to place it feet-side down and, if at all possible, away from an open door way. Ultimately, the best way to learn where in the room you can achieve optimal sound quality is by placing the sub in different locations.

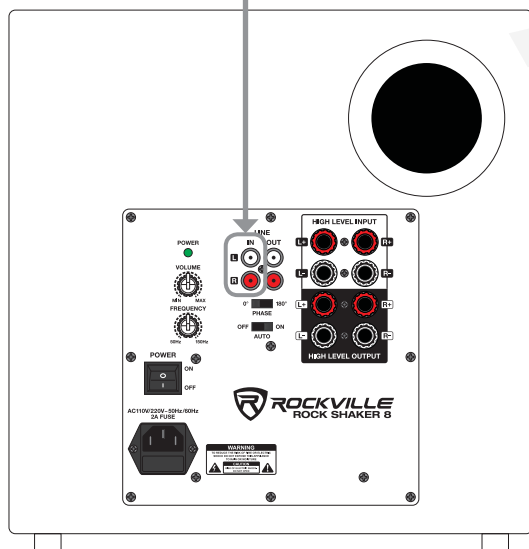


**Please note:** Avoid placing near video monitors. Allow at least 18" of space between your subwoofer and any television. If you notice any distortion or discoloration, immediately move the subwoofer away from the TV.

## Configurations (ROCK SHAKER 8 PICTURED) Receiver w/Subwoofer Output



To LEFT or RIGHT Line Inputs



In this configuration, you'll feed the subwoofer out signal from the receiver to the EITHER the left OR right Line In RCA jacks of the subwoofer using a monaural RCA cable (single RCA to single RCA). Since this unit does not feature an LFE (Low Frequency Effects) input, be sure to turn the Frequency knob to the 150Hz position. This will make the Line In RCA jacks into LFE inputs. You can also connect your receiver's Pre-Out RCA outputs to the subwoofer's Line In RCA inputs.

Alternately, you may use a Y-split RCA cable (single RCA to dual RCA) to feed the subwoofer out signal from your receiver to the left AND right Line In RCA jacks of the subwoofer.

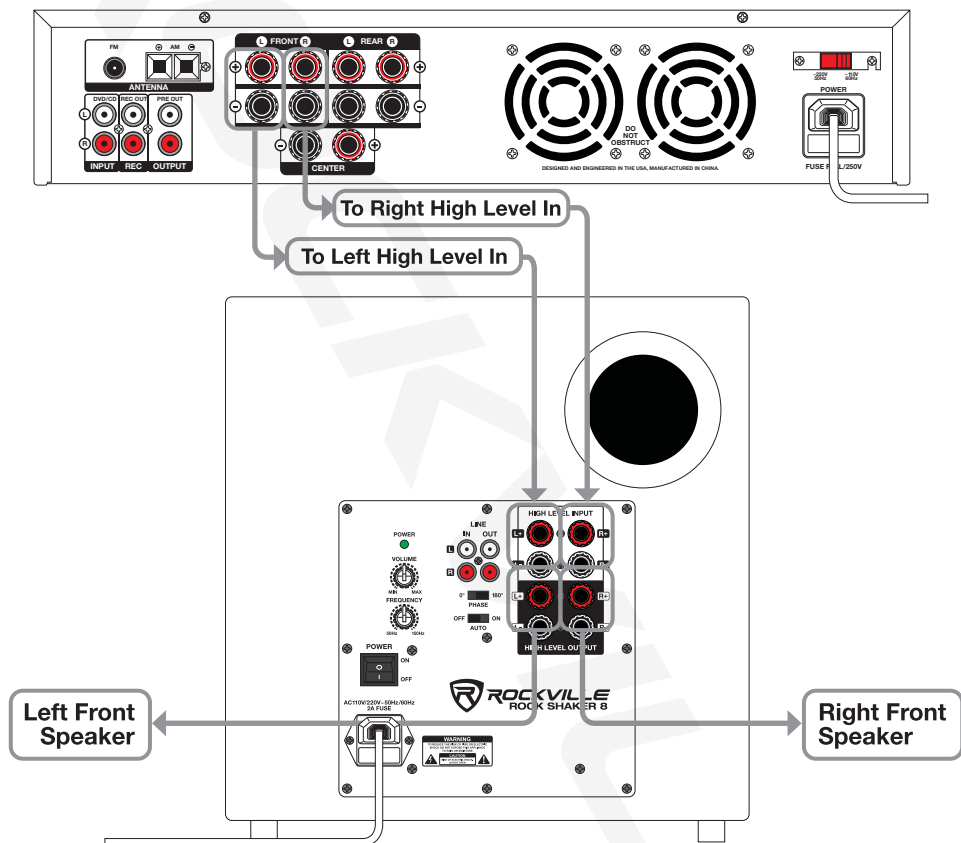
## Configurations (ROCK SHAKER 8 PICTURED)

### Receiver w/No Subwoofer Output

If your receiver does not have a subwoofer output, you have two options for connecting your subwoofer.

1. In this configuration, you feed the left and right Front Channel speaker signals from the receiver to the corresponding High Level speaker inputs on the sub. Then you feed the Left and Right High Level speaker output signals from the sub to the corresponding front channel speakers.

**Please note:** When using the High Level inputs DO NOT use the Line In RCA inputs.



## Settings

### Auto On/Off

Slide this switch to the “AUTO” position and the unit will turn on automatically when it senses an input signal. If there is no signal for 15 minutes, the Auto circuit will turn off the subwoofer. If the switch is in the “ON” position, the unit will be powered on all the time. Slide the switch to the “OFF” position and the unit will receive no power.

### Volume

Use a variety of audio signals to properly adjust the subwoofer's volume level.

### Frequency

This knob adjusts the frequency input to the subwoofer. Depending on your speakers' bass output capabilities, set the crossover frequency on the receiver to 80Hz for tower and bookshelf speakers (speakers with a woofer 5 1/4" in diameter or larger) and 100Hz – 120Hz for satellite speakers.

## **Settings (continued)**

### **Phase Switch**

In order to properly set the phase switch, you have to find the subwoofer's crossover point. We recommend playing various types of music with prominent baselines. Listen for the transition point. This is the moment during audio playback that the subwoofer transitions to your main speakers. Which ever phase setting sounds louder when the subwoofer transitions is the optimum setting.

## **Features**

### **Rock Shaker 6.5**

- 200W Peak/100W RMS
- Built-in class D amplifier
- Enclosure is made of top quality MDF wood
- High-grade vinyl enclosure covering with a beautiful finish
- The enclosure is built with the perfect air space to maximize sound quality and punch
- The rear firing port is engineered for optimal sound
- Class D amplifier circuitry with auto-switching power supply
- High-grade woofer with foam surround and paper cone
- Woofer has a Y30 grade magnet and a 1.5" 4-layer voice coil
- Distortion-free playback (even at max volume listening)
- Enclosure is filled with fire resistant poly cotton
- Detachable foam grill

### **Inputs, Outputs, and Controls**

- RCA line input
- RCA line output
- Speaker high level inputs
- Speaker high level outputs
- Volume control
- Phase switch (0° – 180°)
- Crossover frequency control: 50Hz – 150Hz
- Power switch
- Standard IEC power cable included

### **Details**

- Amplifier: Class D
- Woofer impedance: 4 ohm
- Signal to noise ratio: 85dB (Maximum output with THD+1 <1%, A-weight)
- THD: 1%
- Input sensitivity: 88dB ±2dB
- Frequency response: 20Hz – 200Hz
- 200W peak output
- 200W RMS output
- Voltage: 110V – 220V
- Product dimensions: (W\*H\*D): 11" x 11.8" x 12.6"
- Unit weight: 13.2 LBS
- Colors: Black and Wood

## **Rock Shaker 8**

- 400W Peak/200W RMS
- Built-in class D amplifier
- Enclosure is made of top quality MDF wood
- High-grade vinyl enclosure covering with a beautiful finish
- The enclosure is built with the perfect air space to maximize sound quality and punch
- The rear firing port is engineered for optimal sound
- Class D amplifier circuitry with auto-switching power supply
- High-grade woofer with foam surround and paper cone
- Woofer has a Y30 grade magnet and a 1.5" 4-layer voice coil
- Distortion-free playback (even at max volume listening)
- Enclosure is filled with fire resistant poly cotton
- Detachable foam grill

### **Inputs, Outputs, and Controls**

- RCA line input
- RCA line output
- Speaker high level inputs
- Speaker high level outputs
- Volume control
- Phase switch (0° – 180°)
- Crossover frequency control: 50Hz – 150Hz
- Power switch
- Standard IEC power cable included

### **Details**

- Amplifier: Class D
- Woofer impedance: 4 ohm
- Signal to noise ratio: 85dB (Maximum output with THD+1 <1%, A-weight)
- THD: 1%
- Input sensitivity: 88dB  $\pm$ 2dB
- Frequency response: 20Hz – 200Hz
- 400W peak output
- 200W RMS output
- Voltage: 110V – 220V
- Product dimensions: (W\*H\*D): 11.8" x 15" x 13.8"
- Unit weight: 18LBS
- Colors: Black, Wood, and White

## **Rock Shaker 10**

- 600W Peak/300W RMS
- Built-in class D amplifier
- Enclosure is made of top quality MDF wood
- High-grade vinyl enclosure covering with a beautiful finish
- The enclosure is built with the perfect air space to maximize sound quality and punch
- The rear firing port is engineered for optimal sound
- Class D amplifier circuitry with auto-switching power supply
- High-grade woofer with foam surround and paper cone
- Woofer has a Y30 grade magnet and a 1.5" 4-layer voice coil
- Distortion-free playback (even at max volume listening)
- Enclosure is filled with fire resistant poly cotton
- Detachable foam grill

### **Inputs, Outputs, and Controls**

- RCA line input
- RCA line output
- Speaker high level inputs
- Speaker high level outputs
- Volume control
- Phase switch (0° – 180°)
- Crossover frequency control: 50Hz – 150Hz
- Power switch
- Standard IEC power cable included

### **Details**

- Amplifier: Class D
- Woofer impedance: 4 Ohm
- Signal to noise ratio: 85dB (Maximum output with THD+1 <1%, A-weight)
- THD: 1%
- Input sensitivity: 88dB ± 2dB
- Frequency response: 20Hz – 200Hz
- 600W peak output
- 300W RMS output
- Voltage: 110 – 220V
- Product dimensions: (W\*H\*D): 12.6" x 15.5" x 16.5"
- Unit weight: 20LBS
- Colors: Black, Wood, and White



## **Rock Shaker 12**

- 800W Peak/400W RMS
- Built-in class D amplifier
- Enclosure is made of top quality MDF wood
- High-grade vinyl enclosure covering with a beautiful finish
- The enclosure is built with the perfect air space to maximize sound quality and punch
- The rear firing port is engineered for optimal sound
- Class D amplifier circuitry with auto-switching power supply
- High-grade woofer with foam surround and paper cone
- Woofer has a Y30 grade magnet and a 2" 4-layer voice coil
- Distortion-free playback (even at max volume listening)
- Enclosure is filled with fire resistant poly cotton
- Detachable foam grill

### **Inputs, Outputs, and Controls**

- RCA line input
- RCA line output
- Speaker high level inputs
- Speaker high level outputs
- Volume control
- Phase switch (0° – 180°)
- Crossover frequency control: 50Hz – 150Hz
- Power switch
- Standard IEC power cable included

### **Details**

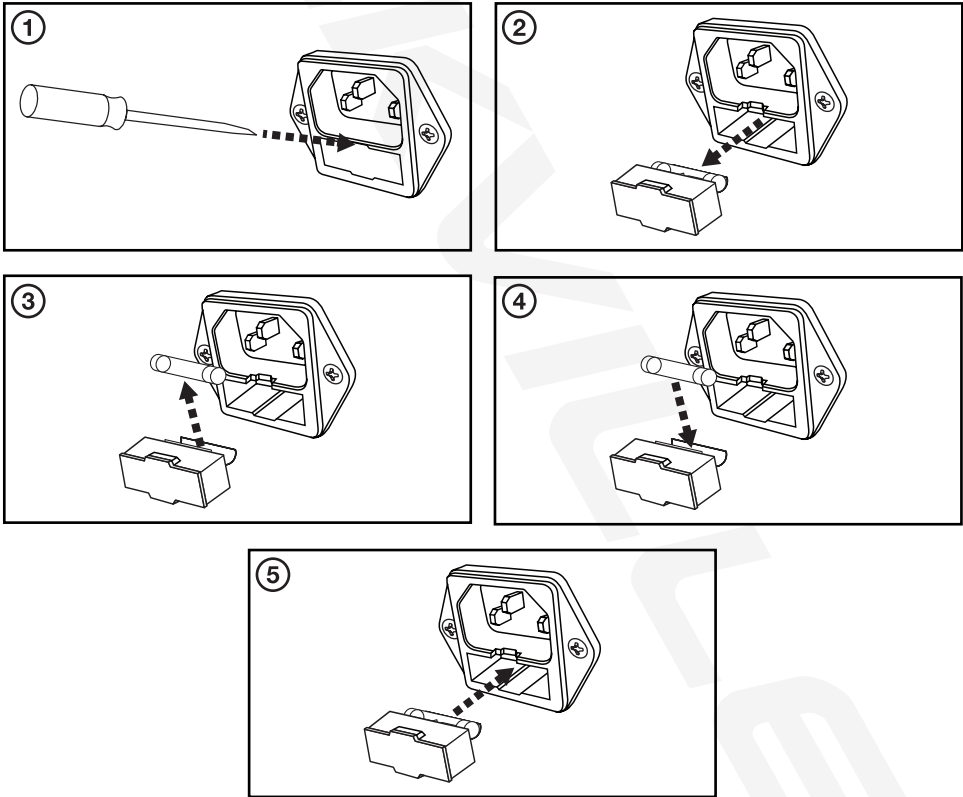
- Amplifier: Class D
- Woofer impedance: 4 Ohm
- Signal to noise ratio: 85dB (Maximum output with THD+1 <1%, A-weight)
- THD: 1%
- Input sensitivity: 88dB ± 2dB
- Frequency response: 20Hz – 200Hz
- 800W peak output
- 400W RMS output
- Voltage: 110 – 220V
- Product dimensions: (W\*H\*D): 16.5" x 20.5" x 18"
- Unit weight: 32.2LBS
- Colors: Black, Wood, and White

# Troubleshooting

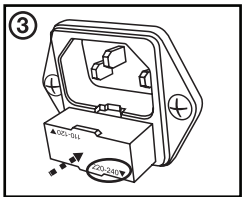
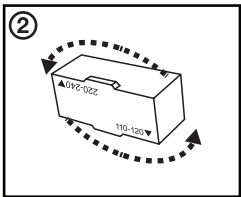
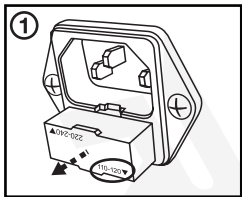
| PROBLEM                      | SOLUTION   |
|------------------------------|--|
| No power                     | <ol style="list-style-type: none"><li>1. Make sure the unit is plugged in and the power switch is in the ON position.</li><li>2. Check that the power cable is plugged in tightly to the unit.</li><li>3. Check and replace the fuse if necessary. See the fuse replacement diagram below.</li></ol>   |
| No sound/<br>distorted sound | <ol style="list-style-type: none"><li>1. Check that all appropriate cables are plugged in correctly.</li><li>2. Check the volume settings of the subwoofer and the input source.</li><li>3. If you are using the Reciever with Subwoofer Out configuration, check the receiver's subwoofer settings.</li><li>4. If you are using the High Level inpus, make sure the polarity of the speaker wires is correct.</li></ol> |

## Fuse replacement Diagram

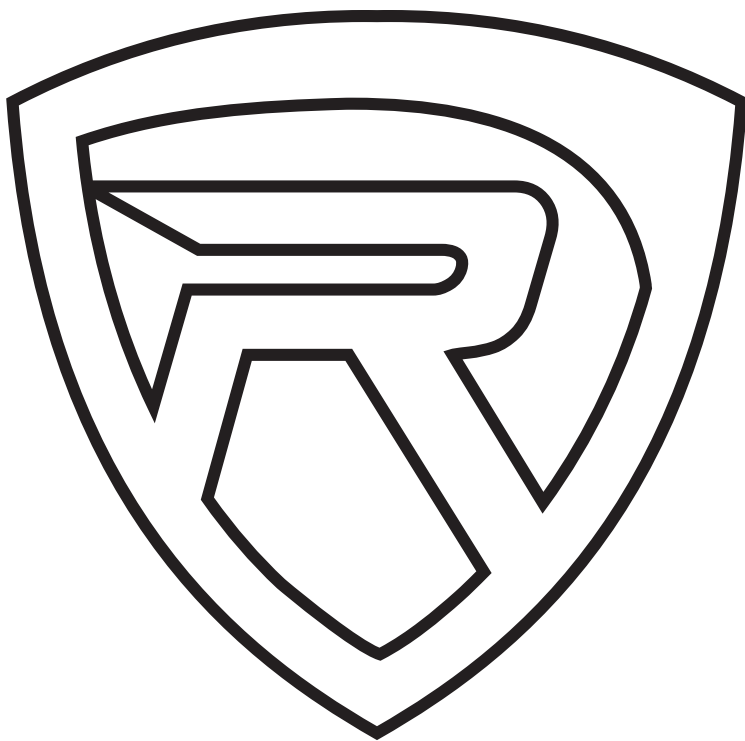
**Please note:** Never replace the fuse with one of greater value



# How to Switch Voltage



***ROCKVILLE***



**RockvilleAudio.com**

© 2022 ROCKVILLE // Features and specifications are subject to change and/or improvement without notice.