

# ROCKVILLE



OWNER'S MANUAL

**RHP7v2**  
7" HEADREST DVD ENTERTAINMENT SYSTEM

Thank you for purchasing this Rockville RHP7v2 Headrest DVD Entertainment System. Please read this owner's manual carefully for proper use of your RHP7v2. Should you need technical assistance, please call our technical help line at 1-646-758-0144, Monday through Friday, 9am to 5pm EST.

**For a detailed how-to wiring video please go to:** <https://youtu.be/oW9XJHfsBGc>  
**For installation related questions email:** [sales@rockvilleaudio.com](mailto:sales@rockvilleaudio.com)

**Please note:** Although the video depicts installation of a different Rockville headrest model, it is intended to show basic installation and wiring procedures. Please refer to this manual for model specific details that may not be covered in the video.

**! Please Note:** The RHP7v2 is a monitor system which receives it's signal from external player devices such as: in-dash DVD players, overhead DVD systems, game consoles, etc.

## IMPORTANT SAFETY INSTRUCTIONS



**TO REDUCE THE RISK OF ELECTRICAL SHOCK, DO NOT REMOVE AMPLIFIER PLATE. NO USER SERVICEABLE PARTS INSIDE. WE RECOMMEND TAKING THE UNIT TO A QUALIFIED SERVICE TECHNICIAN FOR ANY REPAIRS.**

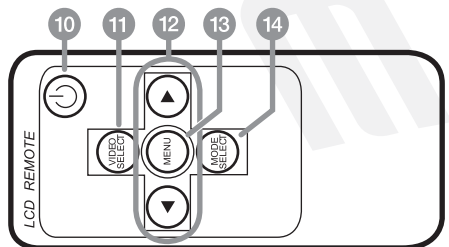
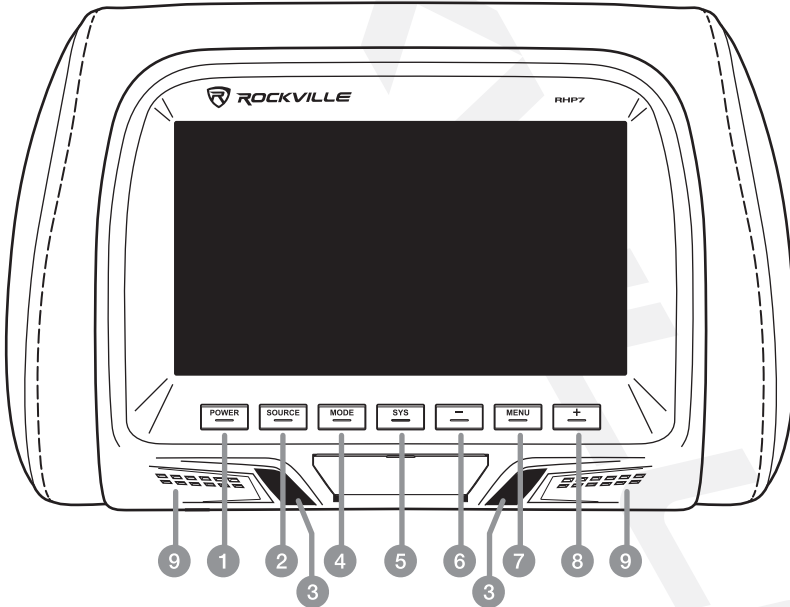
- To minimize the risk of improper installation Rockville recommends that the installation of this product be performed by an MECP-Certified professional installer.
- Improper installation may cause damage to the vehicle or injury to the driver and occupants.
- Installation must be performed in accordance with this product installation manual. Rockville is not responsible for damage or injuries resulting from installation not performed strictly in accordance with the procedures described in this manual.
- This product is designed to be used and viewed by rear seat passengers only. The monitor screen must not be visible to the driver.
- Rockville does not recommend connecting wires or cables to auxiliary connectors while the vehicle is in motion.

### Included

- 2 Multi-Function Remotes
- Installation Cables
- 12 Volt Outlet Power Supply Cable
- 4 Metal Fitment Inserts
- 12 Universal Fitment Inserts
- Owner's Manual
- Warranty Card

# Functions

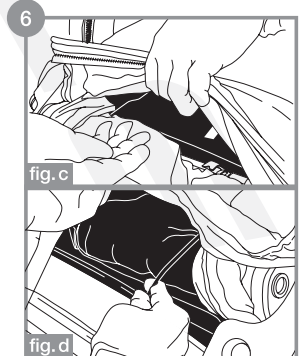
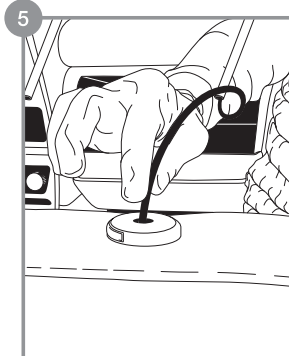
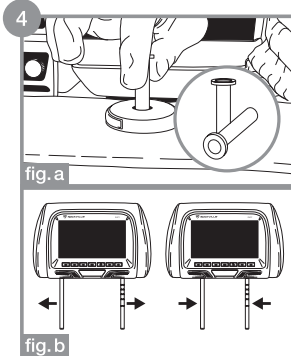
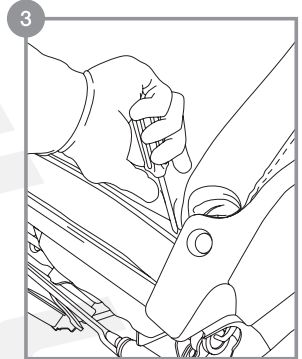
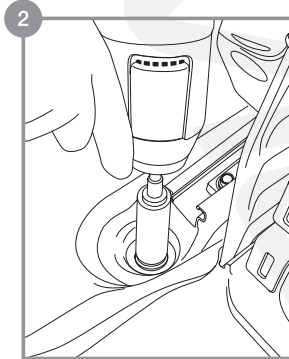
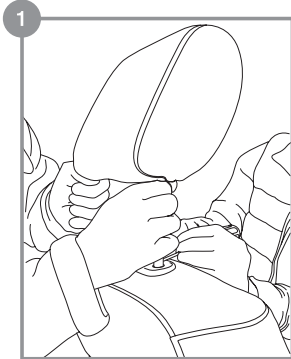
1. Power: Hold for power on/off
2. Source: Press to switch between inputs
3. IR Sensors
4. Mode: Press to change playback modes.
5. Sys: System settings
6. Volume down
7. Menu: Opens the system menu
8. Volume up
9. L/R Internal Stereo Speakers
10. Power: Hold for power on/off
11. Video Select: press to switch between inputs
12. L/R system navigation buttons
13. Menu: Opens the system menu to access settings
14. Mode Select: press to change playback modes.



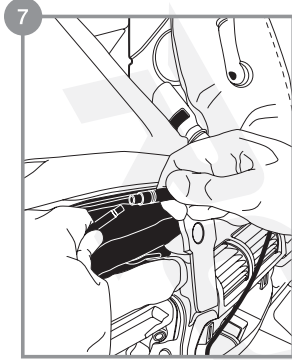
## Installation

**For a detailed how-to wiring video please go to:** <https://youtu.be/oW9XJHfsBGc>

1. Remove the existing headrest from the seat.
2. If necessary, unbolt the seat so as to facilitate access to the seat back.
3. Use a screwdriver, or similar tool, to carefully pry loose the seat cover and pull it back. Now you have access the interior of the seat.
4. The next step is to feed the wire through the headrest mounting slot. Before you do this, make sure that the RHP7v2's poles fit properly into the slots. If the poles are too thin, use the plastic fitment inserts (six pairs included) to ensure a good fit. Slide the insert into the slot and you are all set (fig. a). You may also need to adjust the distance between the mounting poles to match the distance between the headrest slots. Simply pull the poles away from each other or push them towards each other as needed (fig. b).
5. Carefully feed the cable protruding from the headrest pole through the slot. Once the cable is fed, align the poles with the slots, install the headrest, and lock it into place.
6. Reach into the bottom of the interior of the seat back and find the cable (fig. c). Gently pull the cable down and out (fig. d). Make sure you leave enough slack to compensate for seat angle and position adjustments. Failure to do so may result in the cables becoming disconnected. Please note, there are many edges and grooves in the seat back assembly that could snag or damage the cable. Be mindful of these as you pull it down. Finally, be sure to feed the cable to the side closest to the center console as that is where the power and AV connections will be located.
7. Now connect the wiring harness to the cable from the seat back. Tuck away the wires, replace the seat back covers, and put the seats back in place if necessary.



# Installation



Repeat steps 1 – 7 to install the other headrest.

**For a detailed how-to wiring video please go to:**

<https://youtu.be/oW9XJHfsBGc>

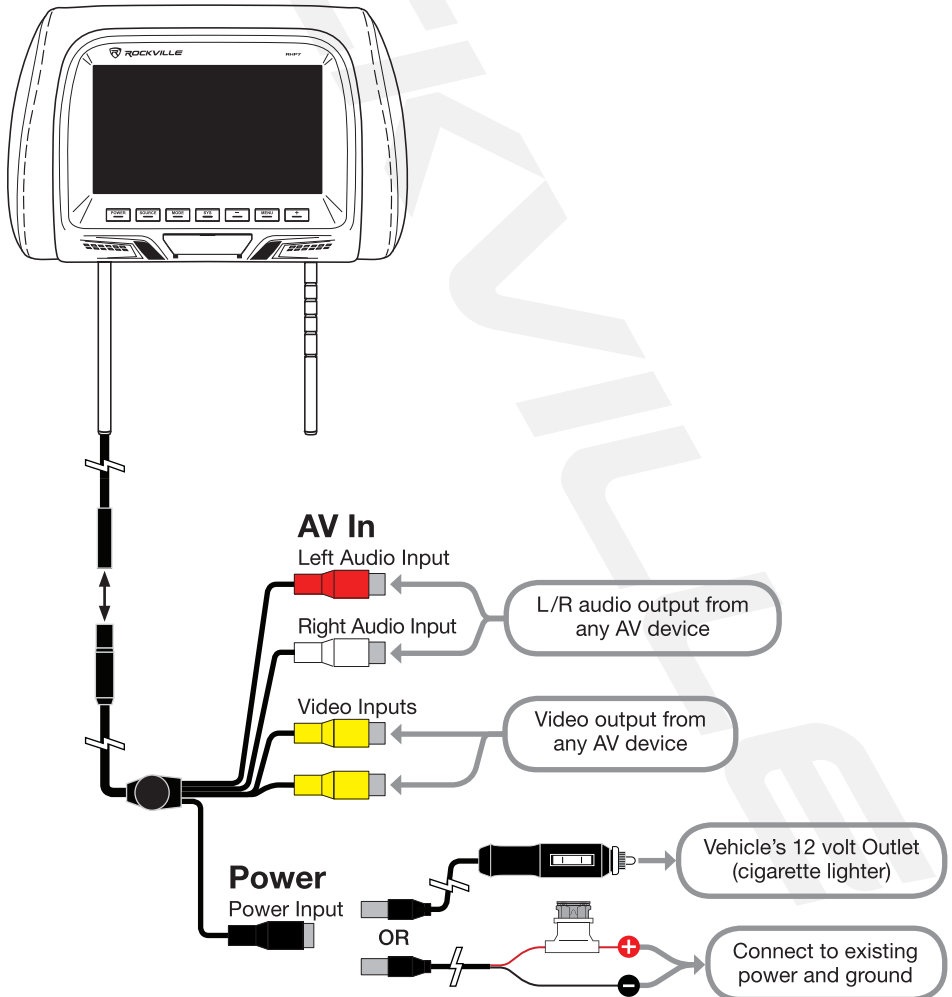
**For installation related questions email:**

[sales@rockvilleaudio.com](mailto:sales@rockvilleaudio.com)

**Please note:** Although the video depicts installation of a different Rockville headrest model, it is intended to show basic installation and wiring procedures. Please refer to this manual for model specific details that may not be covered in the video.

# Wiring

Quick-start Diagram



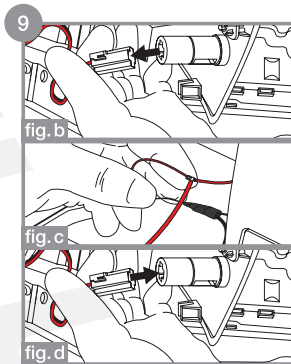
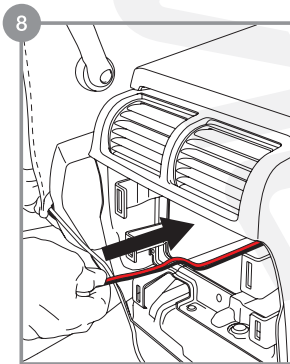
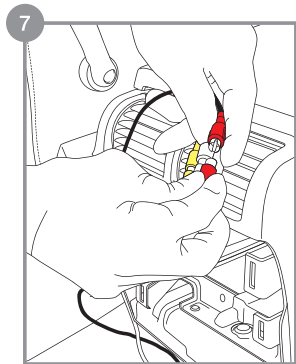
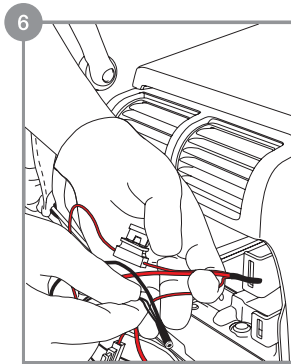
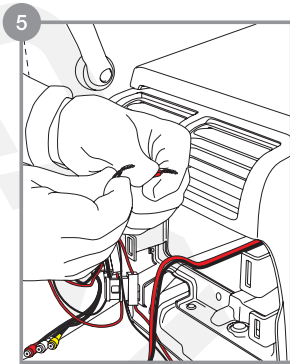
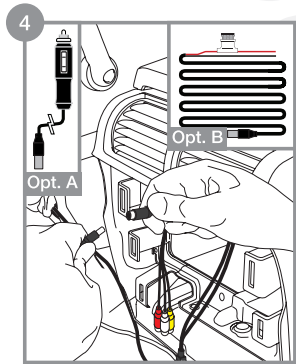
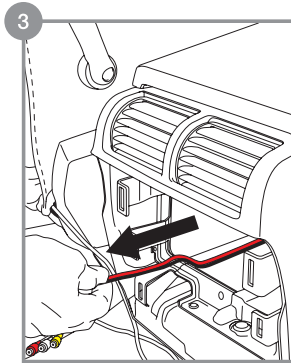
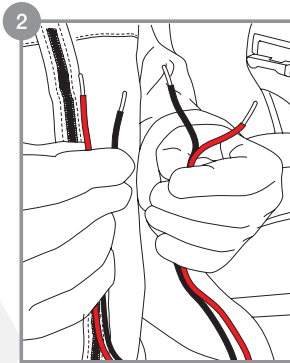
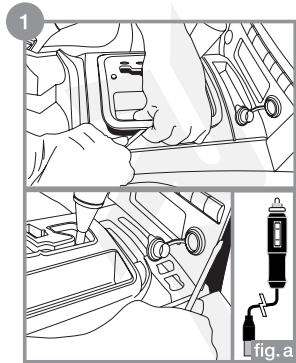
## Wiring

1. Find a direct path for the wires to run through the center console to the power source. This may require removing additional panels. In this instance we will be wiring the headrest monitors directly to the 12 volt power outlet. Alternatively, you can use the included 12 volt power adapter (inset, fig. b). Depending on the vehicle, there may be a 12 volt power outlet closer to the headrests. We recommend you connect to the closest available power source for ease of installation. If you opt for the 12 volt power adapter, please skip to step 4.
2. To make the installation from the 12 volt power outlet, through the center console, and to the back a little smoother, we've made an additional power and ground line. This is recommended, but not needed.
3. Feed the line from the front to the back via the center console.
4. Each headrest monitor requires power. We provide you with two options:  
**Option A, Connect with 12 Volt Adapter:** Connect the adapter to the black power input on the headrest's wiring harness. Do this for both units. Run the adapter through the center console, to the front of the vehicle and plug it into the 12 volt outlet. Go to step 7.  
**Option B, Connect to Existing Power and Ground:** Connect the power and ground wire harness (inset) to the black power input on the headrest's wiring harness. Do this for both units. Go to step 5.
5. Combine the power (red) wires from each monitor and do the same for the ground (black) wires.
6. Combine the headrests power wires to the red power cable of the power/ground line you ran from the front of the vehicle through the center console. Combine the headrest ground wires to the black ground cable of the power/ground line.
7. Now connect the AV input cables to your AV source. The RHP7v2 offers an additional video input to connect a secondary video source.
8. Once all the wires are connected, carefully tuck all the wires into the center console and reassemble it. If your using the 12 volt adapter, skip to step 10.
9. **CAUTION: Before proceeding with the next step, make sure that the vehicle is off and there is no power running to the 12 volt outlet.** Pull the power cable from the 12 volt outlet (fig. b). Strip away some of the sheathing on the power and ground wires. Most vehicles use red for power and black for ground. If your wires are different, please consult your vehicle's owner's manual. Wrap the red power cable from the headrest monitors around the exposed area of the 12 volt outlet's power wire and cover it with electric tape. Wrap the black ground cable from the headrest monitors around the exposed area of the 12 volt outlet's ground wire and cover it with electric tape (fig. c). Plug the power cable back into the 12 volt outlet (fig. d).
10. Test the system to make sure the headrests are receiving power and an AV signal. If everything is working properly, go ahead and reassemble any panels you may have removed during the installation.

**For a detailed how-to wiring video please go to: <https://youtu.be/oW9XJHfsBGc>**

Please note: Although the video depicts installation of a different Rockville headrest model, it is intended to show basic installation and wiring procedures. Please refer to this manual for model specific details that may not be covered in the video.

# Wiring



## Settings

**Picture Settings:** This menu allows you to adjust the brightness, contrast, saturation, sharpness, hue, and orientation of the screen. You can adjust these settings manually or use one of the presets found under “Picture Mode”.



**Sound Settings:** Here you can adjust the bass, treble, balance, and volume settings. This can be done manually or you can use one of the presets found under “Sound Mode”. You can also set the IR frequency channel (A or B) for wireless headphones.



FM MODULATOR NOT AVAILABLE ON THIS UNIT

**System Settings:** In this menu you can choose to change the OSD language, the OSD duration time (the amount of time the menu will be on-screen before disappearing due to inactivity), or reset the unit to the original factory settings.



VIDEO OUTPUT NOT AVAILABLE ON THIS UNIT



## Features

- 7" High Resolution Pair of Monitors
- Universal - Fits Virtually All Vehicles
- Easy Installation - Everything is Included (Step by step install guide included)
- 480 x 234 High Screen Resolution
- 16:9 (Wide Screen) or 4:3 (Letterbox) Switchable Aspect Ratio
- 300:1 Contrast Ratio
- Bright Backlit Display
- Adjustable picture, brightness, contrast, volume
- PAL/NTSC Auto Switching
- IR Transmitter for IR Compatible Stereo Headphones (Sold Separately)
- Internal Stereo Speakers
- Requires External A/V Source Such as In-Dash DVD Player
- RCA A/V Output
- Adjustable and Detachable Metal Poles (4.3" – 7.5")
- Plastic Inserts for Custom Fit to Most Vehicles
- Forward/Backwards Tilting Headrest
- On Screen Display Menu In English, Spanish, French, Russian, Chinese, Italian, Portugese, German, Dutch
- Two Multifunction Remote Controls Included
- Power on/off
- DC 12V Power Supply
- Dimensions (HxWxD) 7.3" x 10.8" x 5.3"
- Height with poles 13.4"

## Troubleshooting

PROBLEM	SOLUTION
Unit does not power on	<ol style="list-style-type: none"><li>1. Check the power cable to ensure it is not damaged and that it is properly connected.</li><li>2. Check and replace the fuse if necessary.</li><li>3. If you are using the remote to power on the unit, check that the battery is fresh and is properly installed. Also check that the IR remote sensor is unobstructed and that the surface is clean.</li></ol>
No picture or distorted picture	<ol style="list-style-type: none"><li>1. Check the playback settings in the settings menu.</li><li>2. Check input source playback settings.</li><li>3. Check that all appropriate cables are plugged in correctly.</li><li>4. Check the power cable to ensure it is not damaged and that it is properly connected.</li></ol>
No sound or distorted sound	<ol style="list-style-type: none"><li>1. Check the unit volume settings as well as those of your input source.</li><li>2. If you are using wireless headphones, make sure they are powered on. Also check that the batteries are fresh and properly installed. Finally, make sure the correct IR channel (A or B) has been selected.</li><li>3. Check that all appropriate cables are plugged in correctly.</li></ol>
The remote control is not responding	<ol style="list-style-type: none"><li>1. Check that the battery is fresh and is properly installed.</li><li>2. Ensure that the IR remote sensor is unobstructed and that the surface is clean.</li></ol>

**For a detailed how-to wiring video please go to:** <https://youtu.be/oW9XJHfsBGc>

**For installation related questions email:** [sales@rockvilleaudio.com](mailto:sales@rockvilleaudio.com)

**Please note:** Although the video depicts installation of a different Rockville headrest model, it is intended to show basic installation and wiring procedures. Please refer to this manual for model specific details that may not be covered in the video.

# FEDERAL COMMUNICATIONS COMMISSION COMPLIANCE INFORMATION

Responsible party name: Rockville

Address: 600 Bayview Ave,  
Entrance A,  
Inwood, NY 11096

Hereby declares that the product(s) RHP7v2 complies with FCC rules as mentioned in the following paragraph:

This device complies with Part 15 of the FCC rules. Operation is subject to the following two conditions: (1) this device may not cause harmful interference, and (2) this device must accept any interference received, including interference that may cause undesired operation.

Note: This equipment has been tested and found to comply with the limits for a Class B digital device, pursuant to Part 15 of the FCC rules. These limits are designed to provide reasonable protection against harmful interference in a residential installation. This equipment generates, uses and can radiate radio frequency energy and, if not installed and used in accordance with the instructions, may cause harmful interference to radio communications. However, there is no guarantee that interference will not occur in a particular installation. If this equipment does cause harmful interference to radio or television reception, which can be determined by turning the equipment off and on, the user is encouraged to try to correct the interference by one or more of the following measures:

- Reorient or relocate the receiving antenna.
- Increase the separation between the equipment and receiver.
- Connect the equipment into an outlet on a circuit different from that to which the receiver is connected.
- Consult the dealer or an experienced radio/TV technician for help.

Visit us at:

**RockvilleAudio.com**

Due to constant improvements, these specifications are subject to  
change without notice.

Copyright 2019