

# ROCKVILLE



**OWNER'S MANUAL**

**RDP931v2**  
9" HEADREST DVD ENTERTAINMENT SYSTEM

Thank you for purchasing this Rockville RDP931v2 Headrest DVD Entertainment System. Please read this owner's manual carefully for proper use of your RDP931v2. Should you need technical assistance, please call our technical help line at 1-646-758-0144, Monday through Friday, 9am to 5pm EST.

**For a detailed how-to wiring video please go to:** <https://youtu.be/oW9XJHfsBGc>

**For installation related questions email:** [sales@rockvilleaudio.com](mailto:sales@rockvilleaudio.com)

**Please note:** Although the video depicts installation of a different Rockville headrest model, it is intended to show basic installation and wiring procedures. Please refer to this manual for model specific details that may not be covered in the video.

## IMPORTANT SAFETY INSTRUCTIONS



**TO REDUCE THE RISK OF ELECTRICAL SHOCK, DO NOT REMOVE AMPLIFIER PLATE. NO USER SERVICEABLE PARTS INSIDE. WE RECOMMEND TAKING THE UNIT TO A QUALIFIED SERVICE TECHNICIAN FOR ANY REPAIRS.**

- To minimize the risk of improper installation Rockville recommends that the installation of this product be performed by an MECP-Certified professional installer.
- Improper installation may cause damage to the vehicle or injury to the driver and occupants.
- Installation must be performed in accordance with this product installation manual. Rockville is not responsible for damage or injuries resulting from installation not performed strictly in accordance with the procedures described in this manual.
- This product is designed to be used and viewed by rear seat passengers only. The monitor screen must not be visible to the driver.
- Rockville does not recommend connecting wires or cables to auxiliary connectors while the vehicle is in motion.

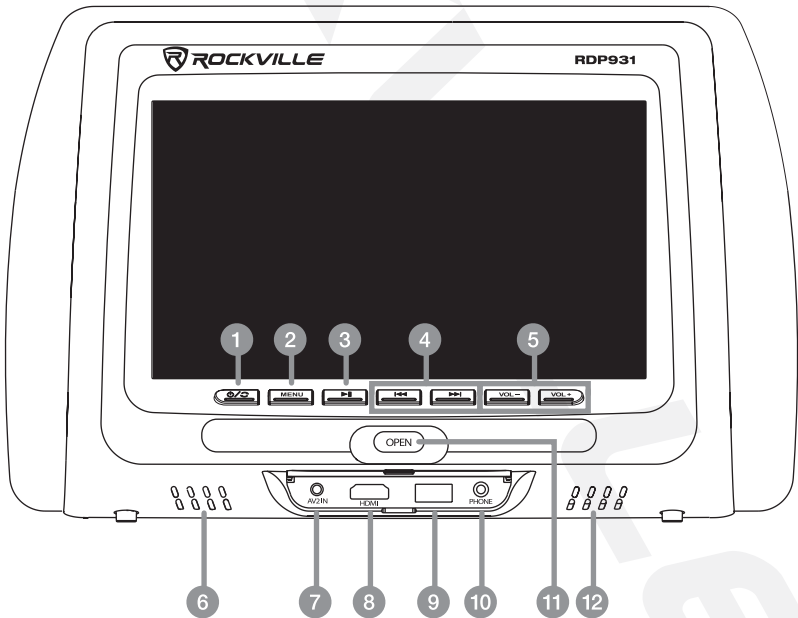
### Included

- 2 Multi-Function Remotes
- Installation Cables
- 12 Volt Outlet Power Supply Cable
- 4 Metal Fitment Inserts
- 12 Universal Fitment Inserts
- Owner's Manual
- Warranty Card

# Functions

## Master Unit:

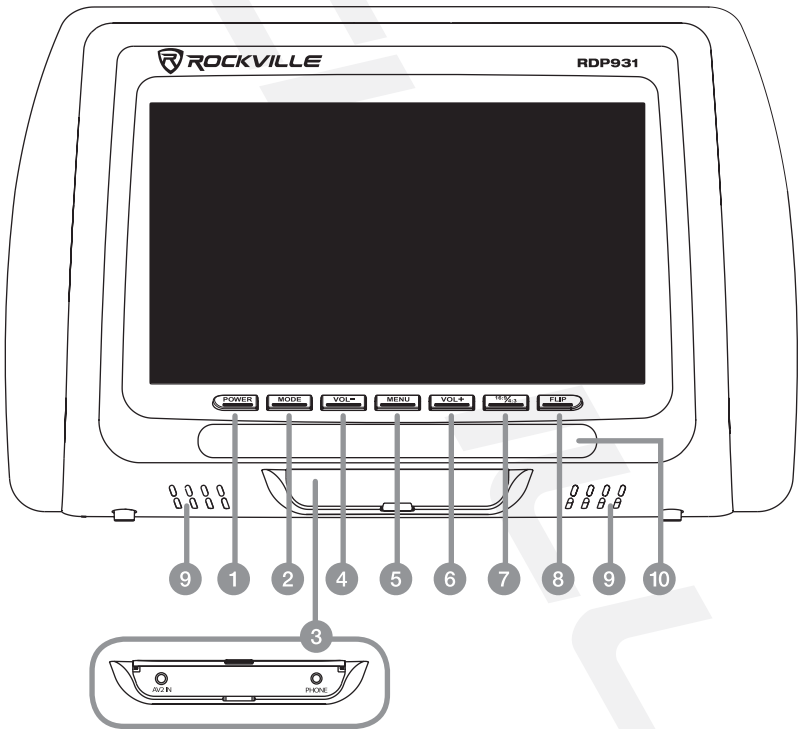
1. Power: Hold for power on/off. Press to switch between input modes.
2. Menu: Opens the system menu to access settings
3. Play/Pause: Press to pause media playback and again to resume.
4. Previous/Next: Press **◀◀** for previous track/chapter. Press **▶▶** for next track/chapter.
5. Volume down/Volume up: Press Vol- to lower the volume. Press Vol+ to raise the volume
6. Left internal speaker
7. AV2: 3.5mm audio input
8. HDMI Port: For audio and video playback of devices with an HDMI output.
9. USB Port: For audio and video input from a USB flash drive or an SD card using the included adapter.
10. Phone: 3.5mm headphone output
11. Press the button to open the disc loading tray.
12. Right internal speaker



# Functions

## Slave Unit

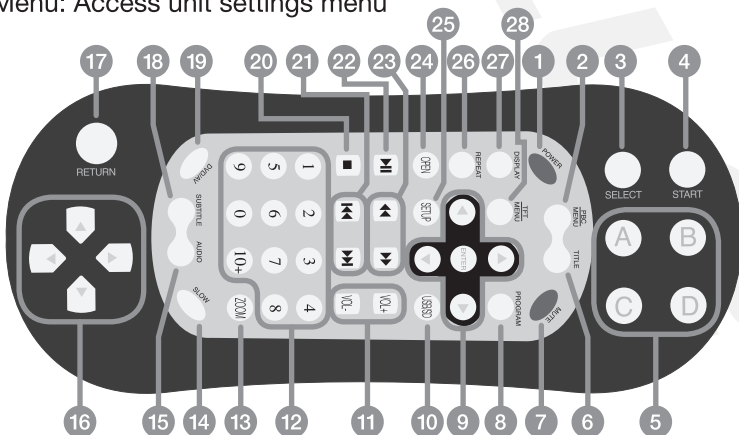
1. Power: Hold for power on/off
2. Mode: press to change playback modes
3. AV2: 3.5mm audio input/Phone: 3.5mm headphone output
4. Volume down
5. Menu: Opens the system menu to access settings
6. Volume up
7. Screen Aspect Ratio: Press to switch between 16:9 (Wide Screen) or 4:3 (Letterbox)
8. Flip: Press to change the screen orientation
9. L/R Internal Stereo Speakers
10. IR Sensor



## Master Remote

1. Power: Turn unit on and off
2. PBC Menu: Setup playback settings
3. Game Select: For in-game use
4. Game Start: For in-game use
5. Game Input: For in-game use

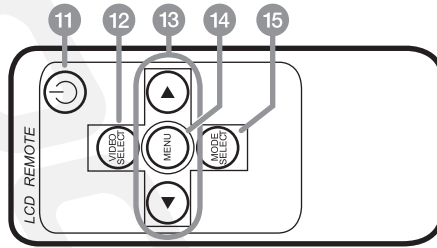
6. Title: Return to the title screen
7. Mute: Mute audio
8. Program: Adjust unit functionality
9. Navigation Pad: Enter - Select highlighted item  
 Right Arrow - Navigate right when available  
 Left Arrow - Navigate left when available  
 Up Arrow - Navigate up when available  
 Down Arrow - Navigate down when available
10. USB/SD: Switch between USB and SD devices
11. Number Pad: Enter digits 1 – 9. Use “10+” for faster input.
12. Volume Up: Increase volume level.
13. Zoom: Zoom in on media content
14. Slow: Decrease frame rate playback of videos
15. Audio: Change the audio channel
16. Game Movement: For in game use.
17. Return: Return to the main menu
18. Subtitle: Toggle subtitles on/off when available
19. DVD/AV: (DVD function not available)
20. Stop: Stop media playback
21. Number Pad: Enter digits 1-9. Use “10+” for faster input.
22. Previous/Next: Skip to previous/next song, photo, or video.
23. Rewind/Fast Forward: Rewind or fast forward selected music or video
24. Open: N/A
25. Setup: System setup
26. Repeat: Repeat current song or video in playlist
27. Display: Adjust video display size
28. TFT Menu: Access unit settings menu



## Functions (continued)

### Slave Remote

1. Power: Hold for power on/off
2. Video Select: press to switch between inputs
3. L/R system navigation buttons
4. Menu: Opens the system menu to access settings
5. Mode Select: press to change playback modes.



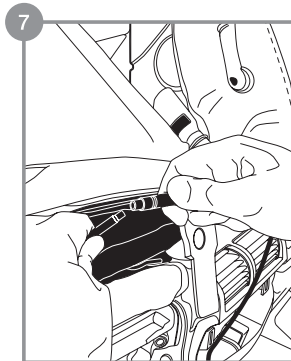
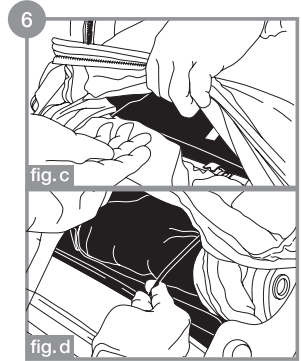
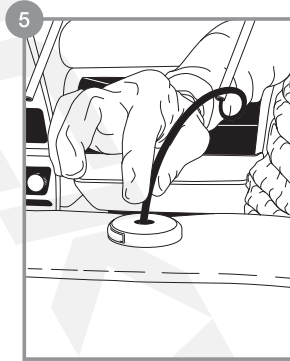
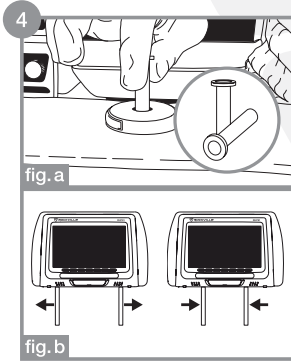
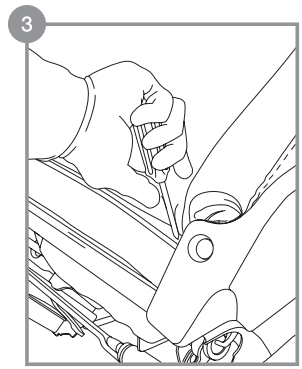
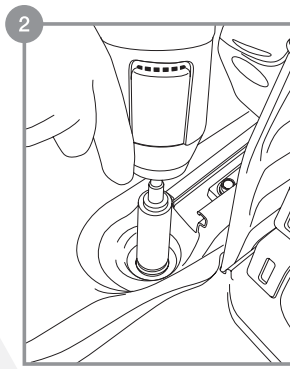
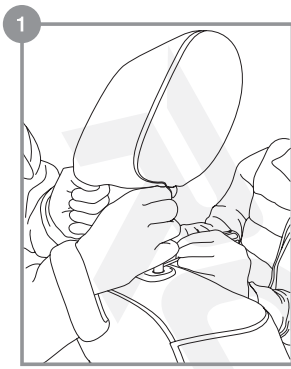
## Installation

**For a detailed how-to wiring video please go to:** <https://youtu.be/oW9XJHfsBGc>

**For installation related questions email:** [sales@rockvilleaudio.com](mailto:sales@rockvilleaudio.com)

**Please note:** Although the video depicts installation of a different Rockville headrest model, it is intended to show basic installation and wiring procedures. Please refer to this manual for model specific details that may not be covered in the video.

1. Remove the existing headrest from the seat.
2. If necessary, unbolt the seat so as to facilitate access to the seat back.
3. Use a screwdriver, or similar tool, to carefully pry loose the seat cover and pull it back. Now you have access the interior of the seat.
4. The next step is to feed the wire through the headrest mounting slot. Before you do this, make sure that the RDP931v2's poles fit properly into the slots. If the poles are too thin, use the plastic fitment inserts (six pairs included) to ensure a good fit. Slide the insert into the slot and you are all set (fig. a). You may also need to adjust the distance between the mounting poles to match the distance between the headrest slots. Simply pull the poles away from each other or push them towards each other as needed (fig. b).
5. Carefully feed the cable protruding from the headrest pole through the slot. Once the cable is fed, align the poles with the slots, install the headrest, and lock it into place.
6. Reach into the bottom of the interior of the seat back and find the cable (fig. c). Gently pull the cable down and out (fig. d). Make sure you leave enough slack to compensate for seat angle and position adjustments. Failure to do so may result in the cables becoming disconnected. Please note, there are many edges and grooves in the seat back assembly that could snag or damage the cable. Be mindful of these as you pull it down. Finally, be sure to feed the cable to the side closest to the center console as that is where the power and AV connections will be located.
7. Now connect the wiring harness to the cable from the seat back. Tuck away the wires, replace the seat back covers, and put the seats back in place if necessary.



Repeat steps 1 – 7 to install the other headrest.

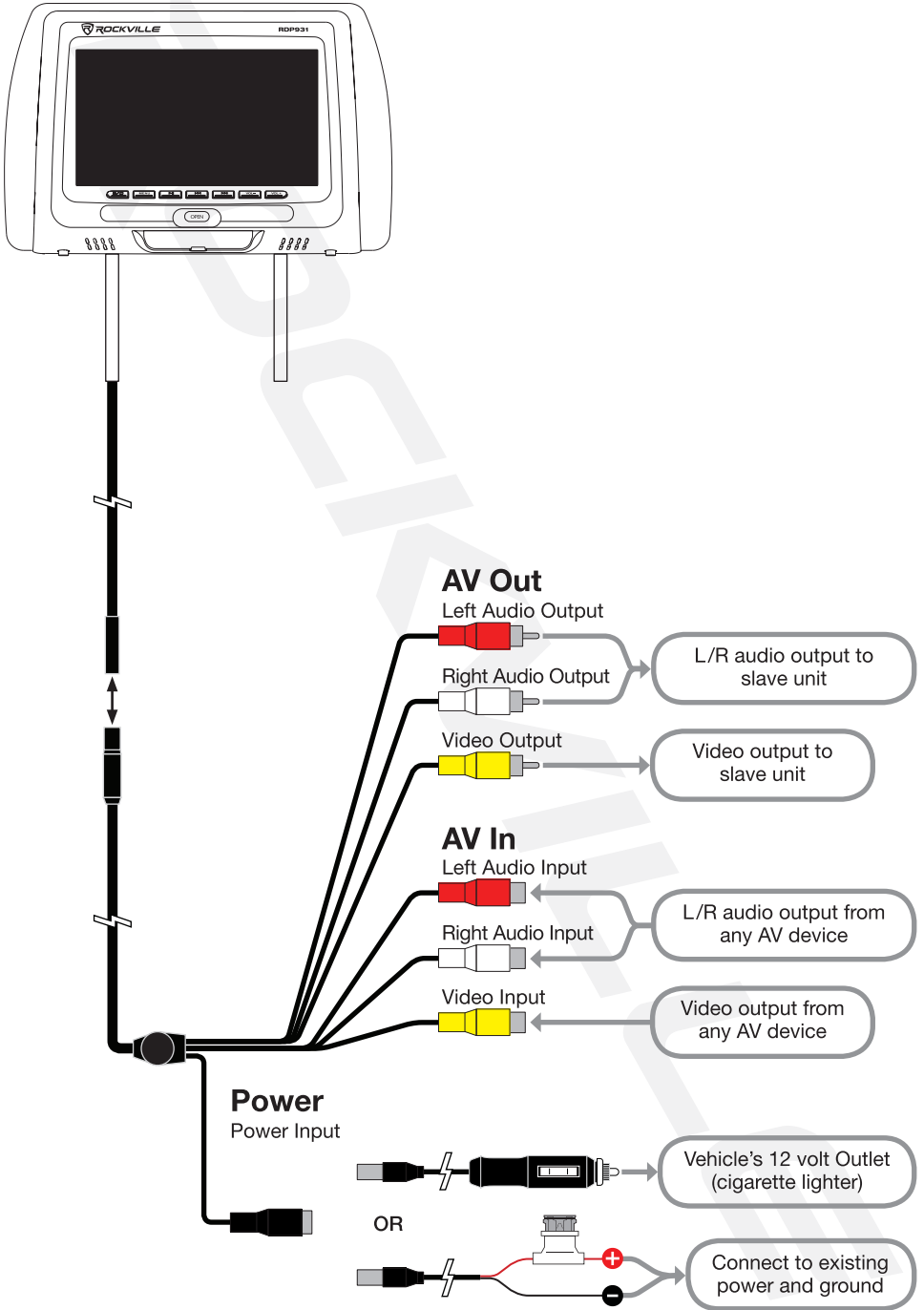
**For a detailed how-to wiring video please go to:**  
<https://youtu.be/oW9XJHfsBGc>

**For installation related questions email:**  
[sales@rockvilleaudio.com](mailto:sales@rockvilleaudio.com)

**Please note:** Although the video depicts installation of a different Rockville headrest model, it is intended to show basic installation and wiring procedures. Please refer to this manual for model specific details that may not be covered in the video.

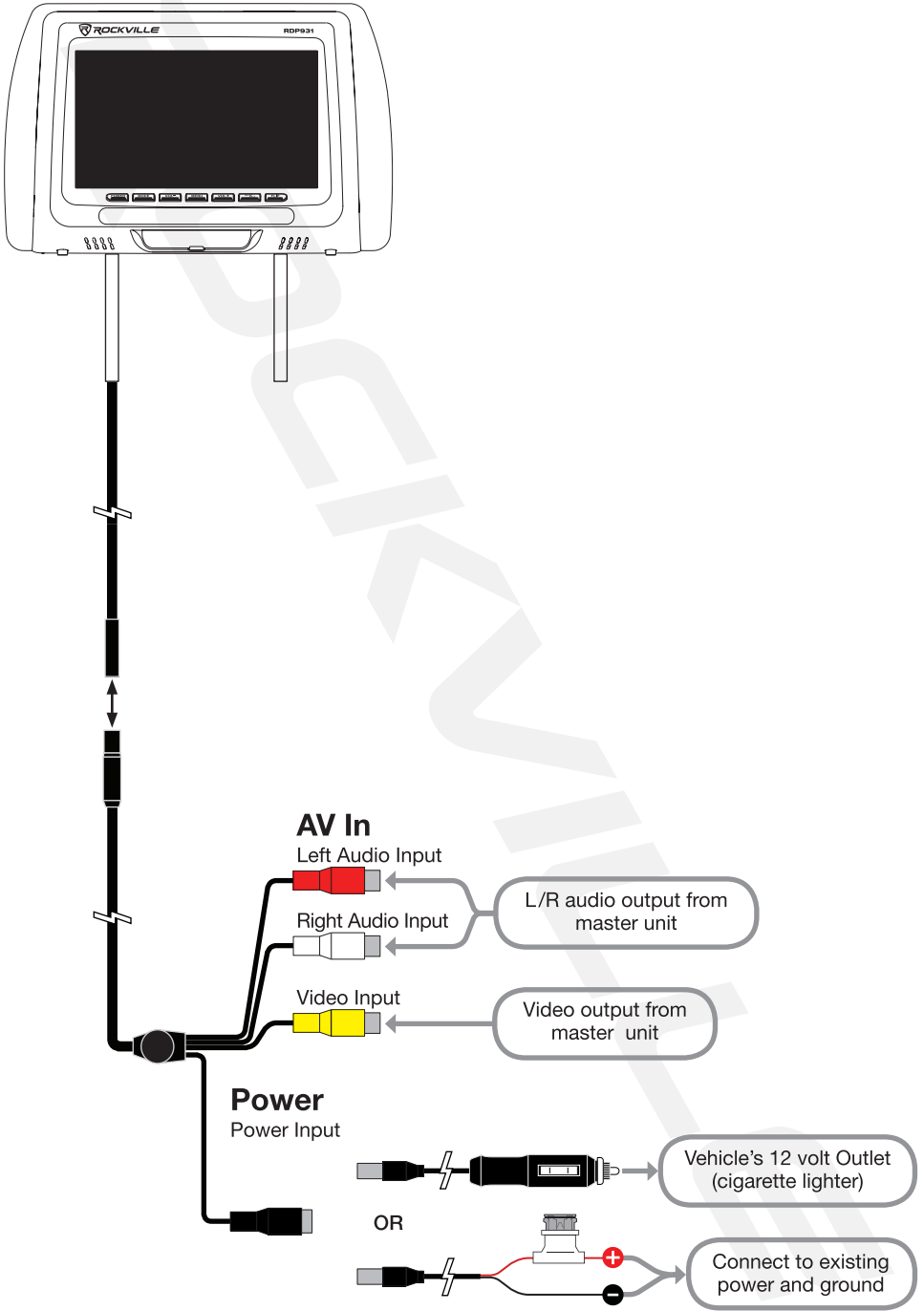
# Wiring

## Quick-start Diagram: Master Unit





# Quick-start Diagram: Slave Unit



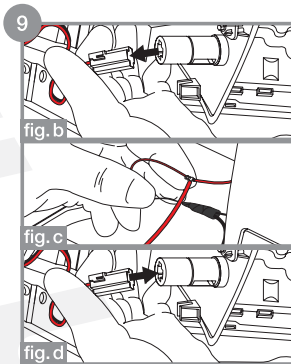
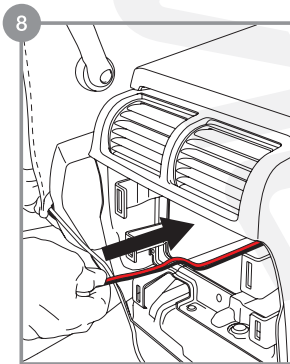
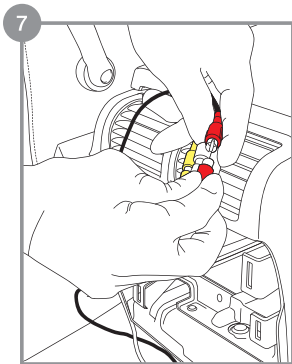
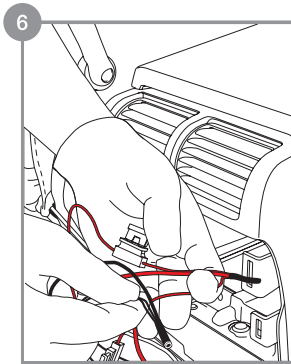
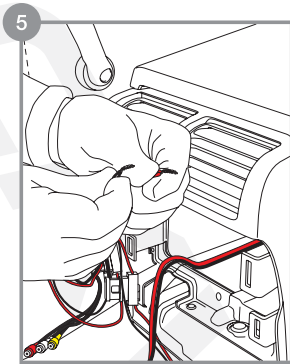
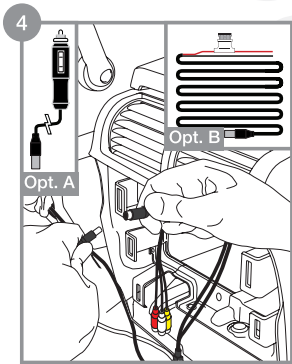
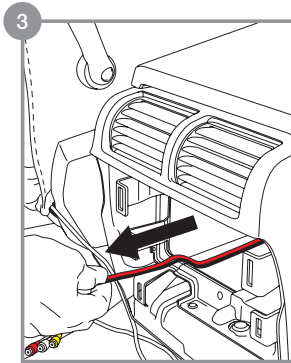
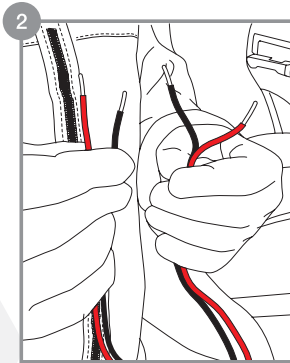
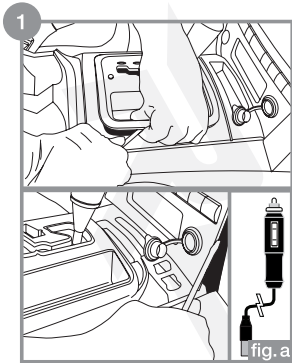
## Wiring

**For a detailed how-to wiring video please go to:** <https://youtu.be/oW9XJHfsBGc>

**For installation related questions email:** [sales@rockvilleaudio.com](mailto:sales@rockvilleaudio.com)

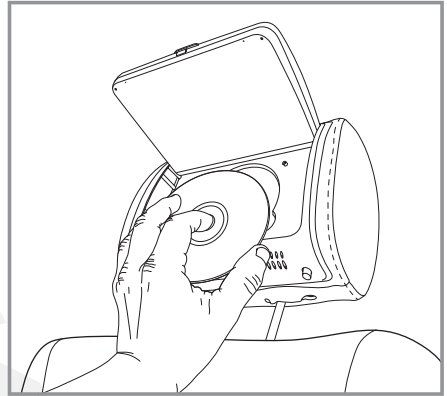
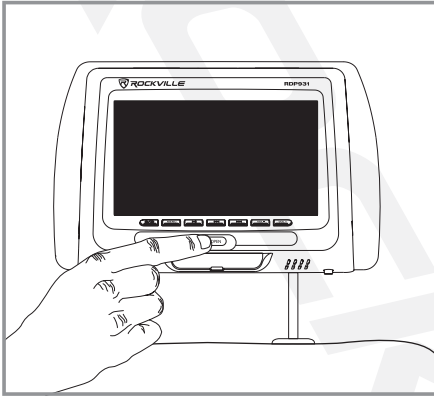
**Please note:** Although the video depicts installation of a different Rockville headrest model, it is intended to show basic installation and wiring procedures. Please refer to this manual for model specific details that may not be covered in the video.

1. Find a direct path for the wires to run through the center console to the power source. This may require removing additional panels. In this instance we will be wiring the headrest monitors directly to the 12 volt power outlet. Alternatively, you can use the included 12 volt power adapter (inset, fig. b). Depending on the vehicle, there may be a 12 volt power outlet closer to the headrests. We recommend you connect to the closest available power source for ease of installation. If you opt for the 12 volt power adapter, please skip to step 4.
2. To make the installation from the 12 volt power outlet, through the center console, and to the back a little smoother, we've made an additional power and ground line. This is recommended, but not needed.
3. Feed the line from the front to the back via the center console.
4. Each headrest monitor requires power. We provide you with two options:  
**Option A, Connect with 12 Volt Adapter:** Connect the adapter to the black power input on the headrest's wiring harness. Do this for both units. Run the adapter through the center console, to the front of the vehicle and plug it into the 12 volt outlet. Go to step 7.  
**Option B, Connect to Existing Power and Ground:** Connect the power and ground wire harness (inset) to the black power input on the headrest's wiring harness. Do this for both units. Go to step 5.
5. Combine the power (red) wires from each monitor and do the same for the ground (black) wires.
6. Combine the headrests power wires to the red power cable of the power/ground line you ran from the front of the vehicle through the center console. Combine the headrest ground wires to the black ground cable of the power/ground line.
7. Connect your AV source to the master unit's AV inputs. Then connect the master unit's AV outputs to the slave unit's AV inputs.
8. Once all the wires are connected, carefully tuck all the wires into the center console and reassemble it. If your using the 12 volt adapter, skip to step 10.
9. **CAUTION: Before proceeding with the next step, make sure that the vehicle is off and there is no power running to the 12 volt outlet.** Pull the power cable from the 12 volt outlet (fig. b). Strip away some of the sheathing on the power and ground wires. Most vehicles use red for power and black for ground. If your wires are different, please consult your vehicle's owner's manual. Wrap the red power cable from the headrest monitors around the exposed area of the 12 volt outlet's power wire and cover it with electric tape. Wrap the black ground cable from the headrest monitors around the exposed area of the 12 volt outlet's ground wire and cover it with electric tape (fig. c). Plug the power cable back into the 12 volt outlet (fig. d).
10. Test the system to make sure the headrests are receiving power and an AV signal. If everything is working properly, go ahead and reassemble any panels you may have removed during the installation.




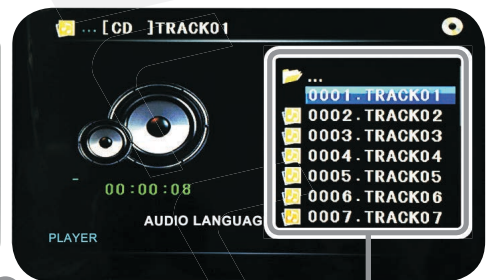
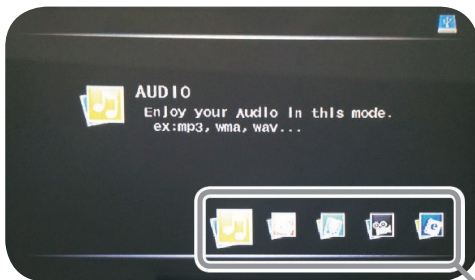
## DVD Operation

1. Press the OPEN button on the front of the unit. The screen panel will flip up revealing the disc tray.
2. Being careful not to touch the laser lens, place the disc in position and gently close the screen panel.
3. Playback will begin automatically.
4. Use the remote control or unit front panel buttons to control playback.



## Browsing Files

1. Select the type of media you'd like to browse Audio/Photo/Games/Video/Books.
2. Browse folders by selecting them to see their contents or select  to return to the previous folder.
3. Select the desired file to begin playback.



# Settings

## Master Unit

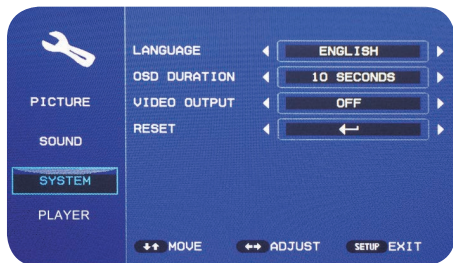
**Picture Settings:** This menu allows you to adjust the brightness, contrast, saturation, sharpness, hue, and orientation of the screen. You can adjust these settings manually or use one of the presets found under “Picture Mode”.



**Sound Settings:** Here you can adjust the bass, treble, balance, and volume settings. This can be done manually or you can use one of the presets found under “Sound Mode”. You can also turn the FM radio frequency modulator on or off and you can set the IR frequency channel (A or B) for wireless headphones.



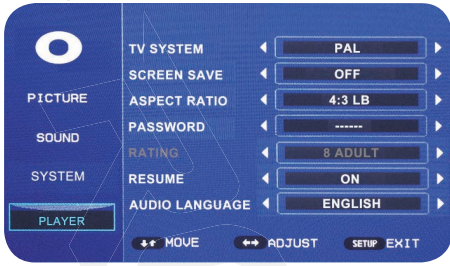
**System Settings:** In this menu you can choose to change the OSD language, the OSD duration time (the amount of time the menu will be on-screen before disappearing due to inactivity), the video output setting (turns the video feed to the slave unit on or off), or reset the unit to the original factory settings.



**Playback Settings:** This menu allows you to select desired TV system (PAL or NTSC), turn the screen saver on or off, and set the aspect ratio (16:9 - Wide Screen or 4:3 - Letterbox). Use ratings menu to control the type of programming that can be viewed. Then set a password to lock the rating settings. Finally, you can set the desired audio playback language .

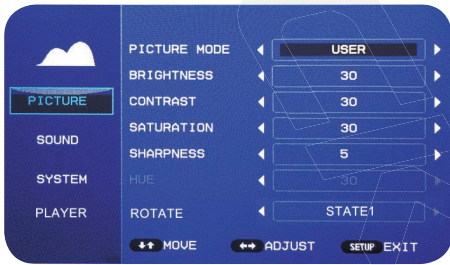


## Settings (continued)



### Slave Unit

**Picture Settings:** This menu allows you to adjust the brightness, contrast, saturation, sharpness, hue, and orientation of the screen. You can adjust these settings manually or use one of the presets found under “Picture Mode”.

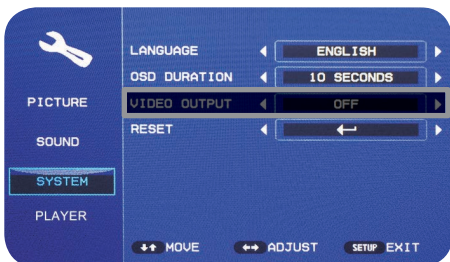


**Sound Settings:** Here you can adjust the bass, treble, balance, and volume settings. This can be done manually or you can use one of the presets found under “Sound Mode”. You can also set the IR frequency channel (A or B) for wireless headphones.



FM MODULATOR NOT AVAILABLE  
ON THIS UNIT

**System Settings:** In this menu you can choose to change the OSD language, the OSD duration time (the amount of time the menu will be on-screen before disappearing due to inactivity), or reset the unit to the original factory settings.



VIDEO OUTPUT NOT AVAILABLE  
ON THIS UNIT

## Supported Disc Types (master unit only)

DVD, S-VCD, VCD, Audio CD, MP3 Disc

## Supported Playback Formats (master unit only)

Photo: JPG, PNG, BMP	Games: SMF	E-Book: TXT
----------------------	------------	-------------


AUDIO	BIT RATE	SAMPLING RATE
MP3	16kbps – 320kbps	8K – 48KHz
WMA7, WMA8, WMA9 (only CBR, VBR) (Only Support 353)	16kbps – 320kbps	8K – 48KHz

CONTAINER	VIDEO CODEC	AUDIO CODEC	RESOLUTION
MPG (.mpg, .mpeg)	MPEG-1, MPEG-2	Dolby Digital(AC3), LPCM, MPEG-Audio (MP1/MP2/MP3)	720 x 480/576 (30fps)
VOB (.vob)	MPEG-1, MPEG-2	Dolby Digital (AC3)	720 x 480/576 (30fps)
AVI (.avi, .divx)	MP4V, DIVX3.xx/ 4.xx/5.xx/6.xx, Xvid, MPEG-1	MP4V DIVX3.xx/4.xx/ 5.xx/6.xx, Xvid, MPEG-1 Dolby Digital (AC3), WMA, PCM, LPCM, AAC-LC(2ch), MPEG-Audio (MP1/MP2/ MP3)	720 x 480/576 (30fps)
DAT (.dat)	MPEG-1, MPEG-2	Dolby Digital(AC3), LPCM, MPEG-Audio (MP1/MP2/MP3)	720 x 480/576 (30fps)
FLV (.flv)	H.263	LPCM, MP3, AAC-LC(2ch)	720 x 480/576 (30fps)
RMVB (.rm, .rmv, .rmvb, .ra)	RV8/9/10	COOK, AAC-LC (2ch), Dolby Digital (AC3)	1280 x 720 (30fps)
MP4, MOV (.mp4, .mov)	MP4V	Dolby Digital (AC3), WMA, LPCM, AAC-LC(2ch), MPEG-Audio (MP1/MP2/ MP3)	720 x 480/576 (30fps)
OGG Vorbis (.ogg)		OGG	
ASF (.asf)		WMA	WMA Only Support WMA7, WMA8, WMA9 (CBR, VBR Only Support 353)

# Troubleshooting

PROBLEM	SOLUTION
Unit does not power on	<ol style="list-style-type: none"><li>1. Check the power cable to ensure it is not damaged and that it is properly connected.</li><li>2. Check and replace the fuse if necessary.</li><li>3. If you are using the remote to power on the unit, check that the battery is fresh and is properly installed. Also check that the IR remote sensor is unobstructed and that the surface is clean.</li></ol>
No picture or distorted picture (master unit)	<ol style="list-style-type: none"><li>1. Check the disc to ensure it is not damaged or dirty. If needed, try another disc.</li><li>2. Make sure the Video Output option in the system settings menu on the master unit is set to "ON." See Master Unit System Settings.</li><li>3. If you are using an external input source, check its playback settings.</li><li>4. Check that all appropriate cables are plugged in correctly.</li><li>5. Check the master unit's power cable to ensure it is not damaged and that it is properly connected.</li></ol>
No picture or distorted picture (slave unit)	<ol style="list-style-type: none"><li>1. Make sure that the slave unit is properly connected to the master unit.</li><li>2. Make sure the Video Output option in the system settings menu on the master unit is set to "ON." See Master Unit System Settings.</li><li>3. Check the slave unit's power cable to ensure it is not damaged and that it is properly connected.</li></ol>
No sound or distorted sound (master unit)	<ol style="list-style-type: none"><li>1. Check the disc to ensure it is not damaged or dirty. If needed, try another disc.</li><li>2. Check the volume settings. If using an external input source, check its volume settings as well.</li><li>3. If you are using wireless headphones, make sure they are powered on. Also check that the batteries are fresh and properly installed. Finally, make sure the correct IR channel (A or B) has been selected.</li><li>5. If you are trying to use the FM modulator, make sure it is turned on.</li><li>4. Check that all appropriate cables are plugged in correctly.</li></ol>
No sound or distorted sound (slave unit)	<ol style="list-style-type: none"><li>1. Make sure that the slave unit is properly connected to the master unit.</li><li>2. Check the volume settings.</li><li>3. If you are using wireless headphones, make sure they are powered on. Also check that the batteries are fresh and properly installed. Finally, make sure the correct IR channel (A or B) has been selected.</li></ol>
Playback starts and then stops abruptly	<ol style="list-style-type: none"><li>1. Check the disc to ensure it is not damaged or dirty. If needed, try another disc.</li><li>2. There may be condensation on the laser lens. Open the screen panel and allow the lens to dry off.</li></ol>



PROBLEM	SOLUTION
The remote control is not responding	<ol style="list-style-type: none"> <li>1. Check that the battery is fresh and is properly installed.</li> <li>2. Ensure that the IR remote sensor is unobstructed and that the surface is clean.</li> </ol>
Unit stuck on loading screen	<ol style="list-style-type: none"> <li>1. Open the screen panel and remove the disc.</li> <li>2. Gently push the blue laser lens housing all the way to the right. Be careful not to touch the laser lens.</li> <li>3. Place the disc in the tray, close the screen panel, and press play.</li> <li>4. Detailed step by step video available: <a href="https://youtu.be/XSE64cSI2cU">https://youtu.be/XSE64cSI2cU</a></li> </ol>
The  icon appears during DVD playback	<p>Certain features or actions may not be available due to:</p> <ol style="list-style-type: none"> <li>a. Disc software restrictions</li> <li>b. The disc software does not support the feature</li> <li>c. A title or chapter number that is out of range has been requested.</li> </ol>
No USB or SD playback	<ol style="list-style-type: none"> <li>1. Make sure the flash drive is not damaged and that it is properly connected to the USB port.</li> <li>2. If using the SD adapter, make sure the SD card has been properly inserted, that is not damaged, and that the adapter is properly connected to the USB port</li> <li>3. Make sure that the files on the flash drive or SD card are in the specified formats (see the Supported Playback Formats section).</li> </ol>

**For a detailed how-to wiring video please go to:** <https://youtu.be/oW9XJHfsBGc>

**For installation related questions email:** [sales@rockvilleaudio.com](mailto:sales@rockvilleaudio.com)

**Please note:** Although the video depicts installation of a different Rockville headrest model, it is intended to show basic installation and wiring procedures. Please refer to this manual for model specific details that may not be covered in the video.

## Features

- 9" Digital Panels Produce a Clearer Picture with No Interference Issues
- One headrest monitor has front loading DVD player with HDMI, USB, and SD inputs and one matching headrest monitor that displays whatever is playing on the master monitor
- HDMI input compatible with external video source and iPad/iPhone
- Region Free DVD Player
- DVD, DVDR/RW, CDR/RW, VCD Playback
- 800 x 480 Screen Resolution
- 16:9 (Wide Screen) or 4:3 (Letterbox) Switchable Aspect Ratio
- 500:1 Contrast Ratio
- PAL/NTSC Auto Switching
- Multi-Media SD/MS/MMC Card Reader
- USB Media Input (MP3, MP4, WMA)
- Built-in FM transmitter for wireless audio playback through vehicle's stereo system
- Built-in IR transmitter for IR compatible stereo headphones (sold separately)
- Internal Stereo Speakers
- 3.5mm Headphone Jack
- RCA Line A/V Signal Output
- 12 Volt Outlet (Cigarette Lighter) Power Supply Cable
- SONY Laser Lens
- Japanese Mabuchi Loader and Motor
- Pre-installed Adjustable Metal Poles (4in – 7in)
- Metal Inserts for Monitor Support
- Plastic Inserts for Custom Fit to Most Vehicles
- Forward/Backwards Tilting Headrest
- High Quality Leatherette Headrest Pillow
- On Screen Display Menu In English, Spanish, French, Russian, Chinese, Italian, Portugese, German, Dutch
- Parental Ratings Control
- Multifunction Remote Control Included
- 32 Bit Game System built in with included game controller and game disc
- (Over 1000 total games built in)
- Dimensions (HxWxD) 8.7" x 12.4" x 5.7"
- Height with poles 14.8"

# FEDERAL COMMUNICATIONS COMMISSION COMPLIANCE INFORMATION

Responsible party name: Rockville

Address: 600 Bayview Ave,  
Entrance A,  
Inwood, NY 11096

Hereby declares that the product(s) RDP931v2 complies with FCC rules as mentioned in the following paragraph:

This device complies with Part 15 of the FCC rules. Operation is subject to the following two conditions: (1) this device may not cause harmful interference, and (2) this device must accept any interference received, including interference that may cause undesired operation.

Note: This equipment has been tested and found to comply with the limits for a Class B digital device, pursuant to Part 15 of the FCC rules. These limits are designed to provide reasonable protection against harmful interference in a residential installation. This equipment generates, uses and can radiate radio frequency energy and, if not installed and used in accordance with the instructions, may cause harmful interference to radio communications. However, there is no guarantee that interference will not occur in a particular installation. If this equipment does cause harmful interference to radio or television reception, which can be determined by turning the equipment off and on, the user is encouraged to try to correct the interference by one or more of the following measures:

- Reorient or relocate the receiving antenna.
- Increase the separation between the equipment and receiver.
- Connect the equipment into an outlet on a circuit different from that to which the receiver is connected.
- Consult the dealer or an experienced radio/TV technician for help.

Visit us at:

**RockvilleAudio.com**

Due to constant improvements, these specifications are subject to  
change without notice.

Copyright 2019