

ROCKVILLE



OWNER'S MANUAL

DPM10B
10" 3-WAY POWERED STUDIO MONITOR

ROCKWELL

Thank you for purchasing this Rockville DPM10B 3-way powered studio monitor.

This powered studio monitor creates a new performance level in studio monitors. Our unique design eliminates high frequency diffraction while providing full range monitoring accuracy, refined vocal reproduction, and enhanced bass response.

Unlike most studio monitors, the Rockville DPM10B features a Tri-Amplifier design. The woofer, midrange, and tweeter each have an individual Frequency Optimized Amplifier (FOA). These amps guarantee that there is no wasted energy in the amplification stage and an absolute minimum of harmonic distortion. The efficiency of our class AB design is in excess of 90% with zero discernible hiss or white noise.

This DPM10B monitor is compatible with most mixing scenarios. It features various input connections (RCA, XLR port, and balanced/unbalanced 1/4" jack) so it can hook-up to any mixing/monitoring system or media source.

Please read this installation guide carefully for proper use of your Rockvillen DPM10B 3-way powered studio monitor. Should you need technical assistance during or after your installation please call our technical help line at 1-646-758-0144, Monday through Thursday, 9am to 10pm EST., and Fridays, 9am to 3pm EST.

IMPORTANT SAFETY INSTRUCTIONS



TO REDUCE THE RISK OF ELECTRICAL SHOCK, DO NOT REMOVE AMPLIFIER PLATE. NO USER SERVICEABLE PARTS INSIDE. WE RECOMMEND TAKING THE UNIT TO A QUALIFIED SERVICE TECHNICIAN FOR ANY REPAIRS.

- Do not place this monitor on an unstable cart, stand, bracket or table. The monitor may fall, causing serious injury to a child or adult and serious damage to the unit.
- Do not use this monitor near water; for example, near a bathtub, sink, in a wet basement, or near a swimming pool.
- The monitor should be situated away from heat sources such as radiators, heat registers, stoves, or other devices that produce heat.
- This monitor should be connected to a power supply outlet of the same voltage as that which is specified on the amp plate of the unit. Protect the power cord from being walked on or pinched, particularly at plugs, convenience receptacles, and the point where it exits from the unit.
- Clean only with a soft damp cloth. Unplug this product from the wall outlet before cleaning.
- Upon completion of any servicing or repairs, request the service center/shop uses factory authorized replacement parts. Replacement with unauthorized parts may result in fire, electrical shock, or other hazards.

Positioning

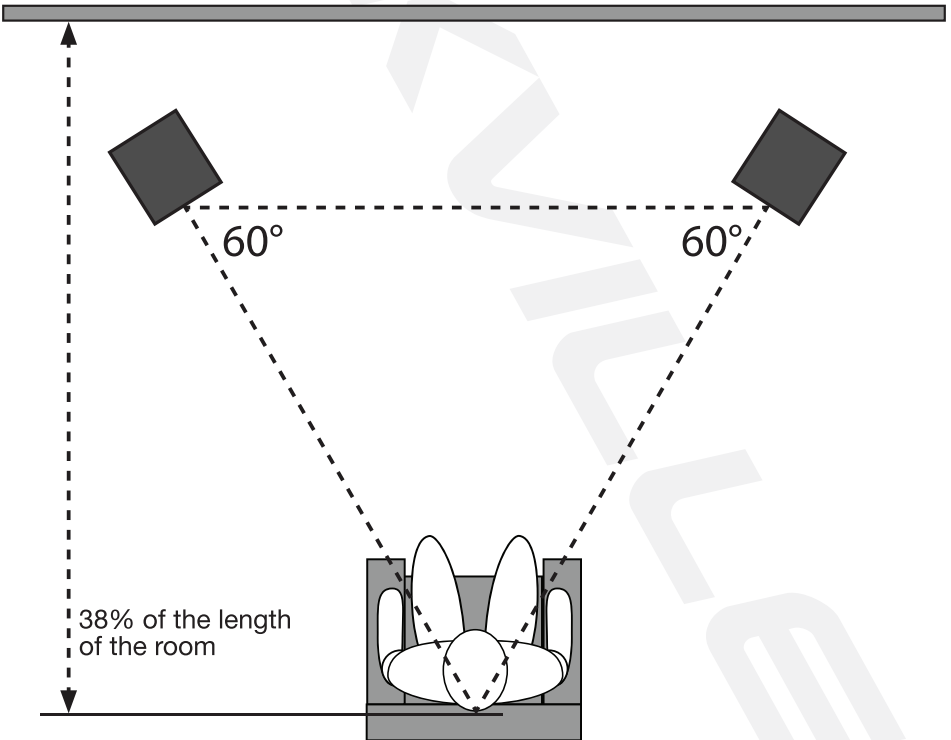
The mid-field monitor, by definition, reduces room interaction. This can be compared to the conventional stereo configuration or the large monitor arrangement in a recording studio where sounds emanating from the monitor or reflecting off ceilings, walls, and floors, all greatly affect sound quality.

By shortening the path to the ear, the DPM10B powered monitor offers a tremendous amount of flexibility allowing sound to become less susceptible to differing room conditions. The ability to adjust the high/low frequency characteristics is equally important to help compensate for room irregularities and achieve the best performance.

Placing the monitor close to a wall or in a corner will reinforce low frequencies. If you move it 2 to 3 feet from walls and corners, you'll hear less low frequency interaction.

The monitor should be placed so that the listening position is fully covered with all units resting on the same horizontal plane. For testing and break-in we recommend acoustical music because it represents a wide, natural spectrum of sound.

Initial placement starts by measuring out a simple equilateral triangle (all three sides equal in length) with the apex at the center of the listening position (as shown below). In this configuration, the left and right monitors are each placed at a 60° angle, equidistant from the listening position.

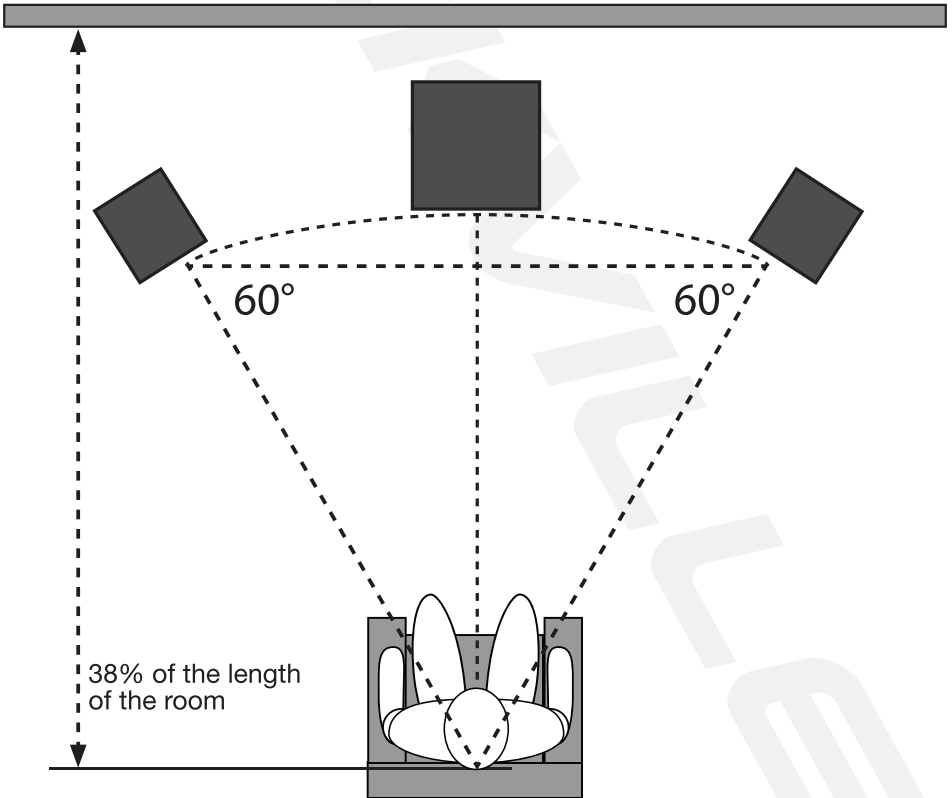


Subwoofer Placement (Optional)

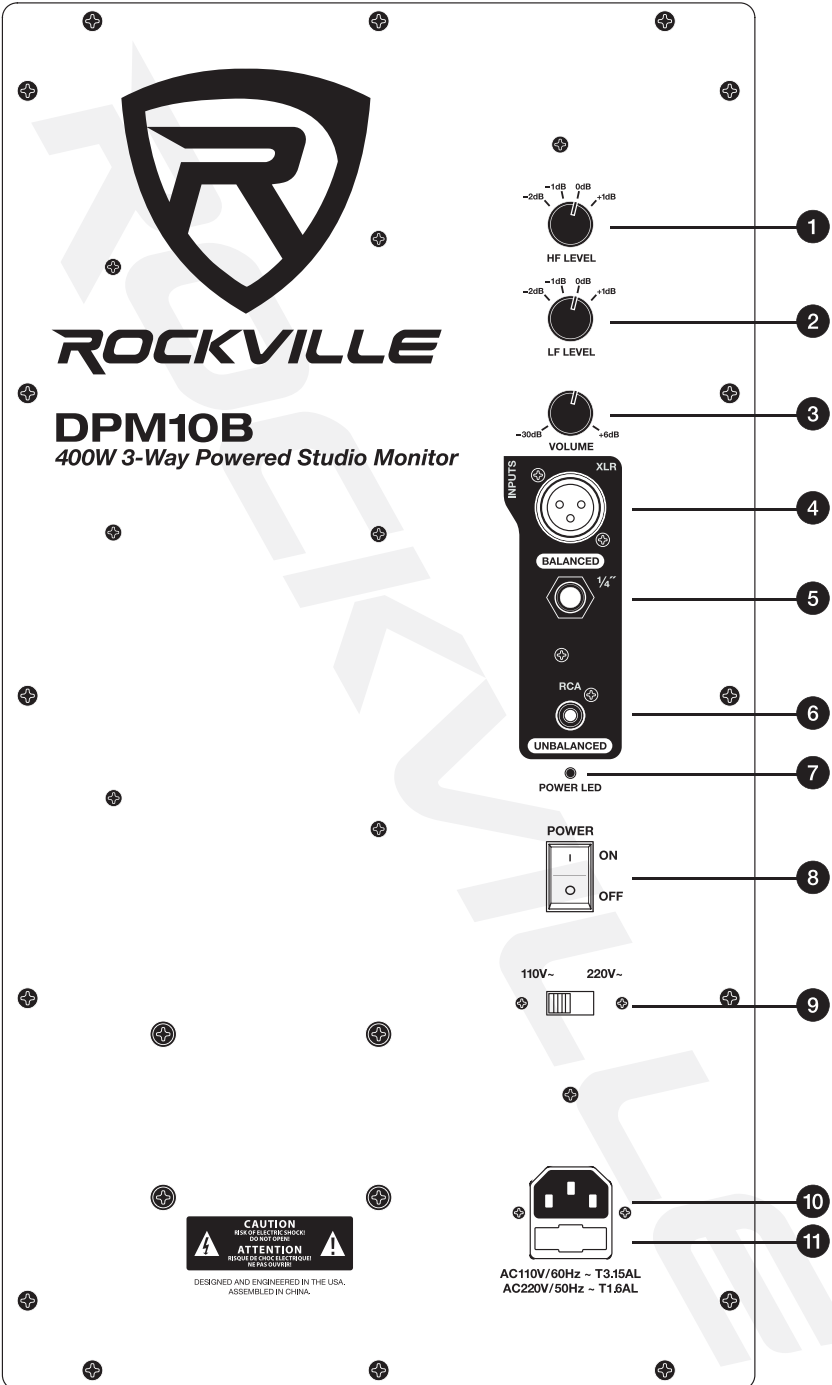
Placement is for the most part a trial and error process and differs depending on the shape and size of the room. Use the diagram below as a general starting point for placement.

Place the sub on the floor in front of the listening position. Be sure to place it centered between the monitors. Then try different locations through out the room until you find a location that suits your needs. If possible, place the subwoofer in a corner as this will provide you with lower distortion, increased headroom, and increased efficiency.

Ensure the proper phase settings on your subwoofer. Then adjust the subwoofers lowpass filter so that it blends seamlessly with your DPM10B monitors. When you have finished adjusting the phase and cross-over settings, re-adjust the level of the sub to your personal preference.



Amplifier Functions



1. High Frequency Level control: -2dB to 1dB
2. Low Frequency Level control: -2dB to 1dB
3. Master volume control
4. XLR input: designed to suit a wide range of balanced and unbalanced signals.
5. 1/4" TS/TRS input: accepts balanced and unbalanced 1/4" plugs. It accepts signals from a variety of sources such as keyboards, electronic drums, tape recorders, mixers, etc. When you use an unbalanced 1/4" plug, the line input automatically turns the ring into ground.
6. RCA input jack
7. LED Power indicator
8. Power switch
9. 110/220V Switchable power supply
10. IEC AC power socket
11. Fuse compartment

FEATURES

- Peak Power: 400 Watt
- RMS Power: 200 Watt
- True 3-way design is Tri-Amped: 40 Watts for highs, 40 Watts for Mids, and 120 watts for the lows. This speaker has 3 amps built in. It has a separate amp for the lows, mids, and highs. This technology creates the most crisp and clear sound imaginable.
- 3-Way Crossover system: Our 3 way crossover built in is tuned to make sure each speaker plays the proper frequencies creating a flattened frequency curve for the ultimate true sound reproduction.
- Midfield monitor with an optimal operating distance of 3ft – 14ft.
- The front-firing port is built to the perfect spec to enhance the sound and keep a very flat frequency curve.
- Curved front bezel design eliminates standing wave distortion.
- Enclosure is made of top quality high-grade MDF wood. The enclosure is 0.5" thick around while the front board of it is a full 1" thick to give you the ultimate best sound quality!
- Tweeter Waveguide design optimizes directivity and phase response providing amazing detail and imaging.
- Ferro Fluid Enhanced 1.5" Neodymium silk dome tweeter. Our tweeter produces the softest most realistic highs on the market that will not hurt your ears. They are loud, clear, and musical.
- Tweeter has 1" voice coil diameter
- 10" Glass Aramid Composite woofer cone for excellent transient response and accurate low and mid sound reproduction.
- 4" Glass Aramid Composite midrange for extremely accurate midrange and vocal sound reproduction.
- Balanced XLR and ¼" TRS line inputs and unbalanced RCA inputs
- The enclosure is built with the perfect amount of air space to maximize sound quality for a studio.
- Thermal and overload / clip protection protects the speaker from getting damaged.
- Rubber woofer surrounds increase sound quality and eliminate unwanted distortion.
- Specially wound voice coils produce accurate responses along entire frequency spectrum.
- Round edges and trimmed front wooden front board give you a modern beautiful looking speaker
- Front panel built with black real anodizing aluminum
- 110/220 Volt compatible

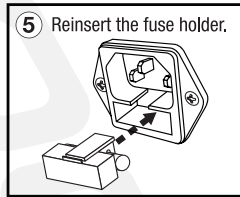
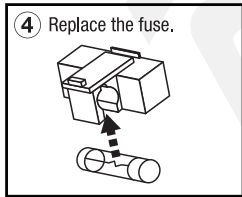
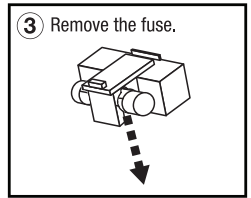
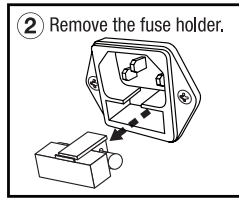
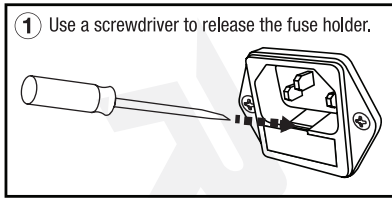
ATTENTION! Please ensure that the voltage indicator is set to the correct voltage setting for your area. Be aware that this unit comes equipped with a fuse for the 110V setting. When changing voltage settings to 220V, the fuse must be changed as well. see page 10 for additional information.

SPECIFICATIONS

- **Certification:** CE and RoHS Compliant
- **Amplifier:** Class AB, tri-amped
- **Max SPL:** 113dB @ 1w/1m
- **THD:** 0.10%
- **Frequency Response:** 31Hz – 20kHz
- **Peak output:** 400 Watts
- **RMS output:** 200 Watt
- **Input voltage:** 110/220V
- **Components:** 1.5" neodymium silk dome tweeter, 4" midrange and 10" woofer with rubber surrounds and Glass Aramid Composite cones
- **Includes:** power cord, user manual, warranty card
- **Input Impedance (Ohms):** 10 K Ohm Balanced
- **High Frequency Equalization Adjustment:** (-2dB to +1dB)
- **Low Frequency Equalization Adjustment:** (-2dB to +1dB)
- **System Volume:** (-30dB to +6dB)
- **Product Dimensions in Inches (Single):** (W*H*D) 12.8" x 21.5" x 14.4"
- **Net Weight:** 39.7 LBS

Fuse Replacement Diagram

Fuse types: For 110V usage: T3.15AL 250V. For 220V usage: T1.6AL 250V

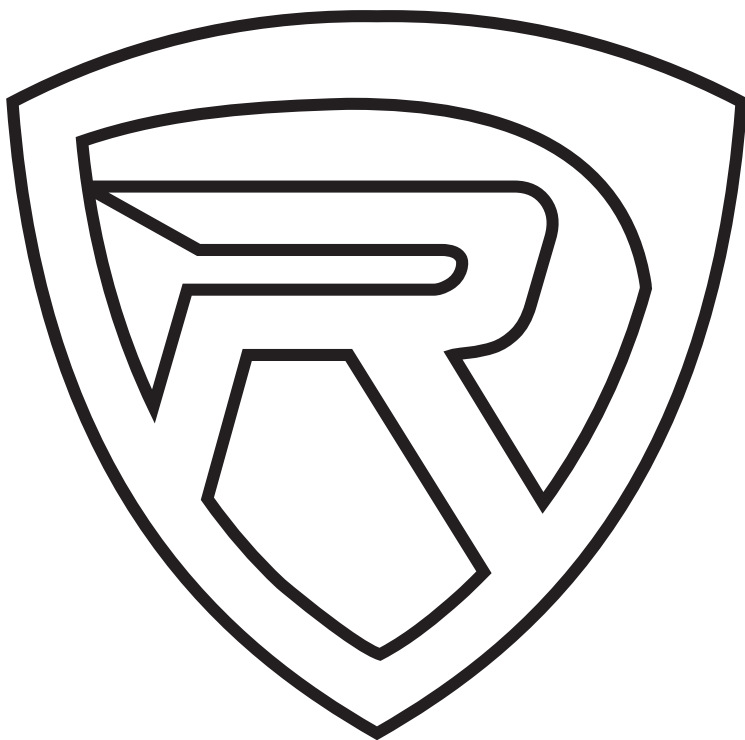


ATTENTION
REPLACE FUSE WITH ONE OF
THE SAME TYPE AND RATING.

Troubleshooting

PROBLEM	SOLUTION
No power	<ol style="list-style-type: none">1. Ensure power cable is properly connected and that the LED power indicator is illuminated.2. Check that AC voltage matches that of the operating voltage requirements.3. Check fuse, replace if necessary (see page 10). REPLACE FUSE WITH ONE OF THE SAME TYPE AND RATING.
No sound/ distorted sound	<ol style="list-style-type: none">1. Check to see if all other audio devices using the same outlet are still operating.2. Ensure that the audio source cable is plugged into both the source and the corresponding monitor input.3. Check that unit volume is not set to 0.4. The signal source (mixer, work station, MP3 player, etc.) is turned up to a level that can properly send a signal to the monitors.5. Check each monitor individually for sound. Ensure that the input cables are properly seated.6. If the monitor is still not responding, it should be returned to an authorized Rockville dealer.
Buzzing sound	<ol style="list-style-type: none">1. Make sure you are using a proper cable. For ¼" cables, there are three types: instrument, TS (unbalanced), and TRS (balanced). Check the requirements of the connected gear and the input of the speaker and make sure you are using the appropriate cable.2. All audio equipment should use the same ground point. Check all other devices using the same AC output in the building such as dimmers, neon signs, TVs, and computer monitors. These devices should not be using the same circuit.

ROCKVILLE



RockvilleAudio.com

© 2021 ROCKVILLE // Features and specifications are subject to change and or improvement without notice.