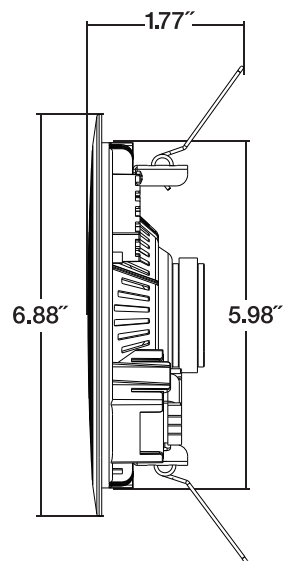
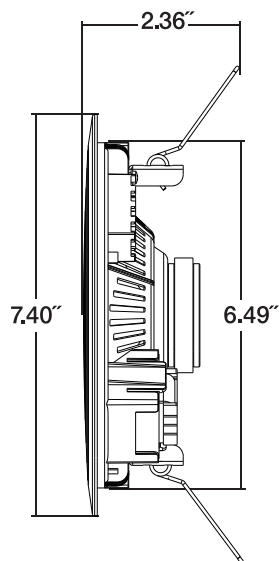


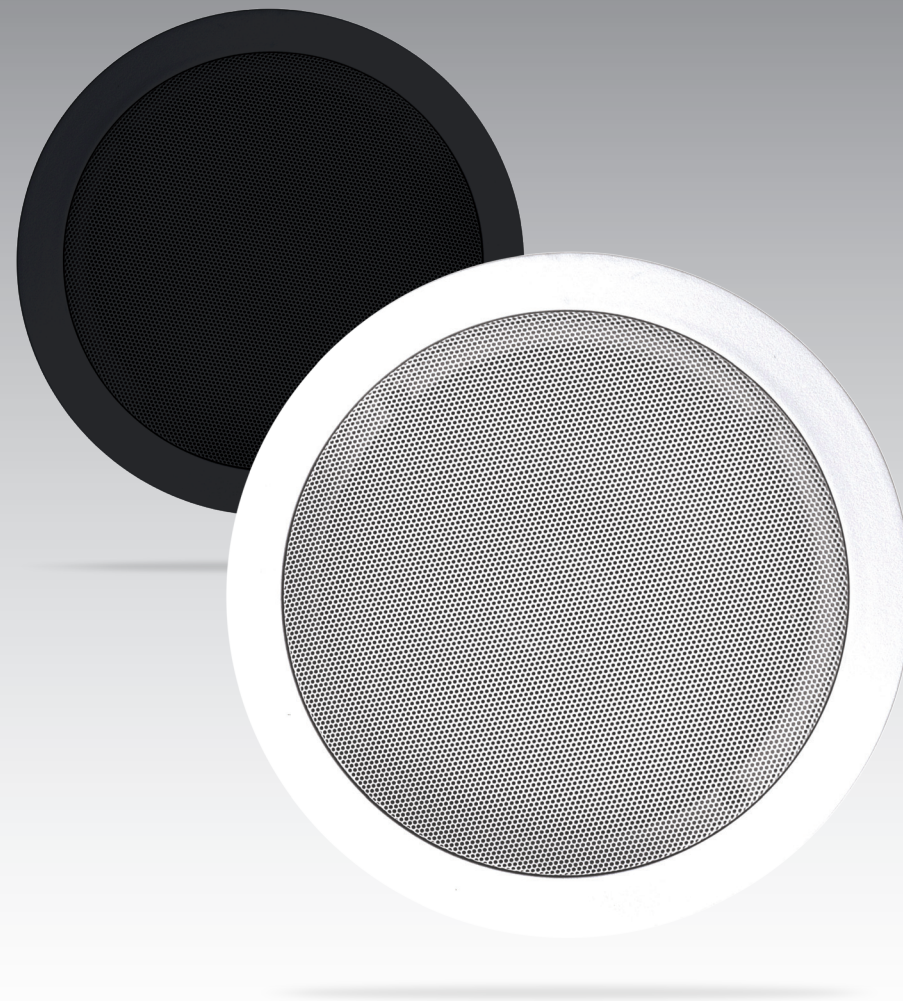
## Dimensions CCL5T



## CCL6T



# ROCKVILLE



## OWNER'S MANUAL

**CCL5T/CCL5T**  
5" 70V Commercial Ceiling Speakers

**CCL6T/CCL6T**  
6" 70V Commercial Ceiling Speakers



### *Who Reads Manuals?*

Go to [vimeo.com/360861713](https://vimeo.com/360861713) or scan the QR code and watch a short video, which shows you how to set this item up and how to use it.

**RockvilleAudio.com**

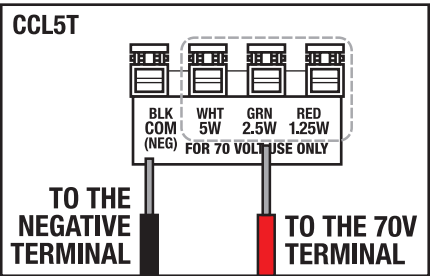
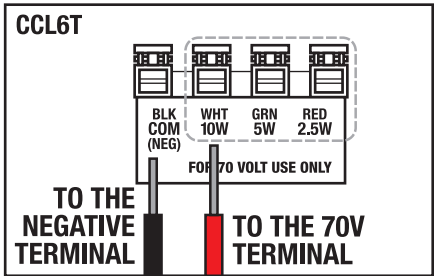
© 2021 ROCKVILLE // Features and specifications are subject to change and or improvement without notice

The Rockville CCL-T series is a great choice for any restaurant, office, school, retail store, or other commercial application. This speaker will sound great for all your PA announcements and background music.

Please read this guide carefully for proper use of your Rockville CCL-T series commercial in-ceiling speakers. Should you need assistance please call our technical help line at 1-646-758-0144, Monday through Thursday, 9am to 10pm EST., and Fridays, 9am to 3pm, est.

## Choosing the Appropriate Tap

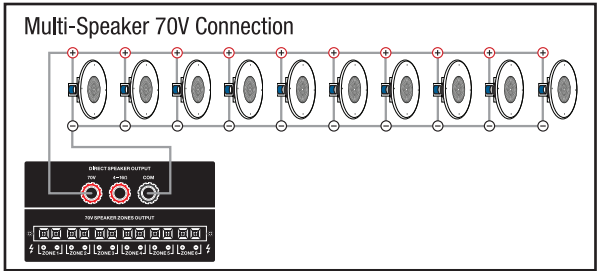
The “taps” are the four spring loaded push terminals at the bottom of the speakers. The first one is the COM (negative) terminal and the other three are the available power options (see diagram below). These power options allow for full customization of the sound for the space in which the speakers are to be installed. In a restaurant, for example, you can tap your dining room, hallway, and bathroom speakers at 2.5 watts. Then the speakers in the outside seating area can be set at 10 watts. Another feature of 70-volt speakers is that you can mix and match any type whether they are in-ceiling speakers (such as these), wall mounted speakers, subwoofers, etc.



**PLEASE NOTE:** These speakers can only be connected to the 70-volt terminal of your amplifier.

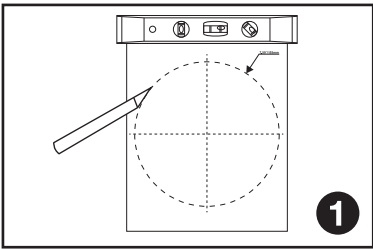
## Wiring

70-volt speaker set-ups allow you to run very long lines of speaker wire without signal loss. Wire all the positive terminals of the speakers to the positive 70-volt terminal of the amplifier. The COM (negative) terminal on the speaker simply gets wired to the negative terminals on the amp. You don't have to worry about impedance, as the power is constant. The total number of speakers multiplied by the tap value cannot exceed the output power (in watts) of your 70V amplifier. The example below shows 10 total speakers. Using the 10W taps, you will need an amplifier with at least 100 watts (10 x 10 = 100W). A good rule of thumb is to select an amplifier with 15 to 20% greater power; in this case, an amplifier that delivers about 120W.

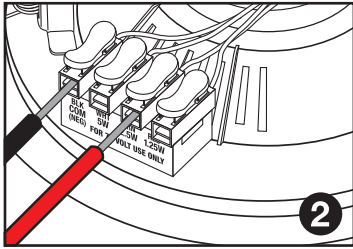


## Installation

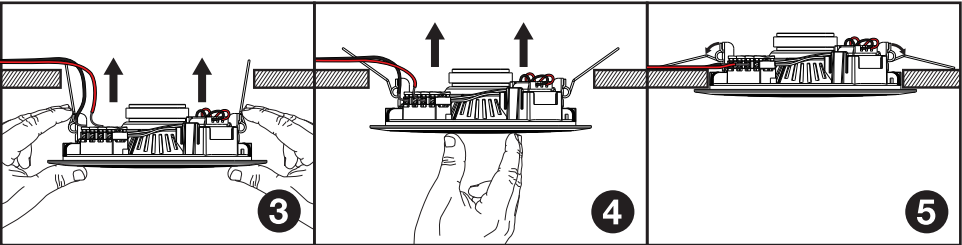
**Tools needed:** Drywall knife, level, wire strippers



Using the included template, cut an opening in the ceiling.



Connect the negative speaker cable to the COM (negative) terminal and the positive speaker cable to the appropriate 70 volt terminal.



Push and hold the spring-loaded metal retainers on either side of the speaker and insert it into the opening (step 3). Once the retainers have cleared the opening, release them. They will snap down onto the ceiling surface. Continue pushing the speaker until it is properly seated (steps 4 & 5).

## Features/Specifications

### CCL6T

- 70V Power Options: 10w (white), 5w (green), 2.5w (red)
- Perfect for PA announcements, background music, or any application where you need to install many speakers
- Double Paper Cone
- 0.75" Voice Coil
- 3.5 oz Ferrite Magnet
- 6" Woofer
- Fireproof Screw Terminal Block
- High Quality Spring Loaded Push Terminals
- Paintable Flush Mount Grills
- Frequency Response: 80Hz – 15KHz
- Sensitivity: 88dB @ 1w/1m
- Impedance: 1K, 2K, 4K ohms
- Mounting Depth: 2.36"
- Cut-out Diameter: 6.5"
- Color: Available in White or Black (paintable)

### CCL5T

- 70V Power Options: 5w (white), 2.5w (green), 1.25w (red)
- Perfect for PA announcements, background music, or any application where you need to install many speakers
- Double Paper Cone
- 0.5" Voice Coil
- 1.7 oz Ferrite Magnet
- 5" Woofer
- Fireproof Screw Terminal Block
- High Quality Spring Loaded Push Terminals
- Paintable Flush Mount Grills
- Frequency Response: 100Hz – 17KHz
- Sensitivity: 86dB @ 1w/1m
- Impedance: 2K, 4K, 8K ohms
- Mounting Depth: 1.77"
- Cut-out Diameter: 5.98"
- Color: Available in White or Black (paintable)